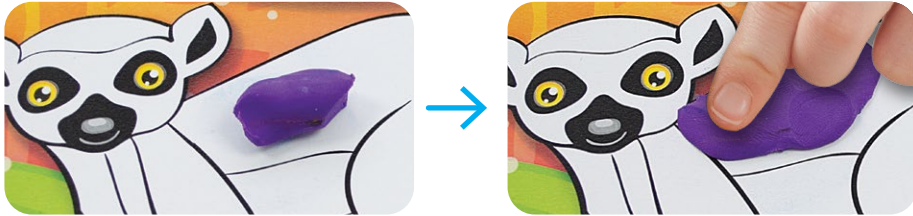


Clay Techniques

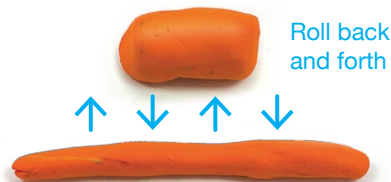
Pinch & Place - Color in areas by pinching off small amounts of clay and pressing them into the design.



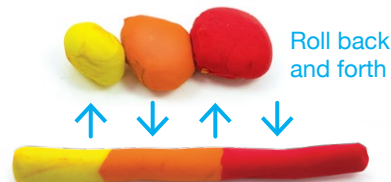
Clay Balls & Dots - Roll small pieces of clay in a circular motion. Add a ball to your design and flatten it to make a dot.



Clay Rod - Roll a small piece of clay back and forth until you form a thin rod. You may need to use both hands. Add the rods to your design to cover long areas.



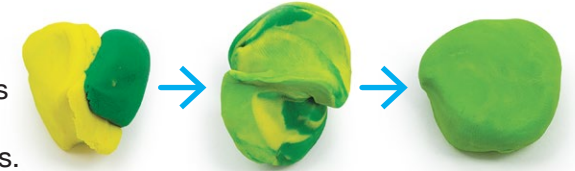
Rainbow Rod - Try using different clay colors to create a rod.



Marble the Clay - Squish and twist two or more clay colors together. You'll see the colors start to mix into each other. Stop squishing when you're happy with the result.



Mix New Colors - Squish two colors together. Keep squishing between your fingers until the colors are completely mixed and a new color appears.



Layer Clay - Try layering clay colors for a dimensional look.



Blend Clay - Smear two or more clay colors to create a blend. Use your fingers or the clay tools to smooth it out.

Let's start coloring!

Choose a design to color with clay. Use the clay techniques to fill in the designs. Be sure you press the clay on the design board firmly to keep it in place.

Use the clay tools to:



Shape



Blend



Add Texture

