

Festive Window Art

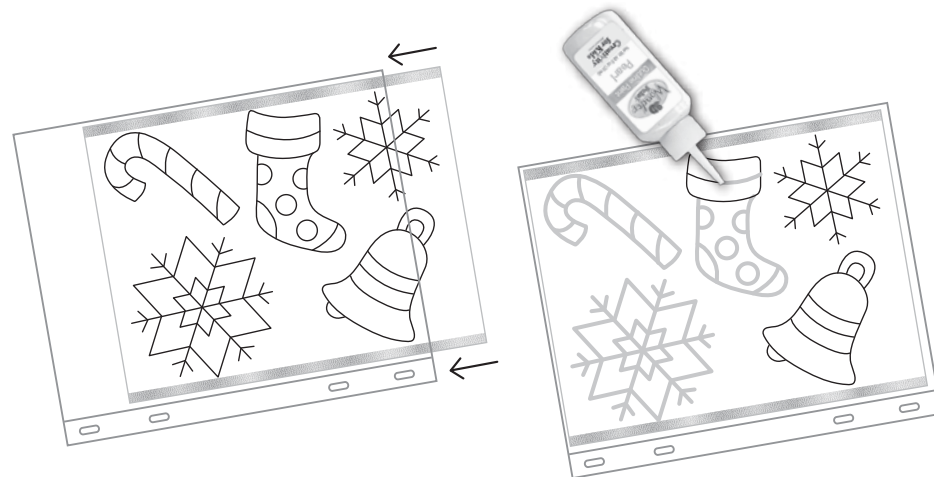
Outline Your Design

Remember, when you are finished, you will peel your picture off of the plastic sheet as one piece. When outlining and painting your design, be sure all lines are connected and all spaces are filled in.

You can use the patterns we have included on the previous page – or draw your own.

1. Fold the instructions with the patterns facing out and slide it into the plastic project sheet.
2. Use the Pearl Outliner Paint to trace your designs. Be sure to create a continuous unbroken line.
3. Set your designs aside to dry. This will take approximately 30 minutes.

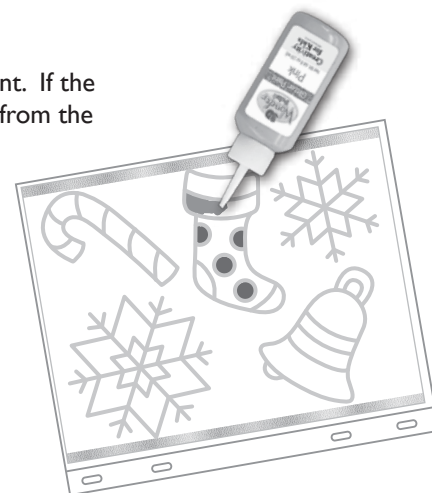
Before you move onto the next steps, lightly touch the outline to be sure it is dry.



Paint and Decorate

Now it's time to fill in your design. For best results, apply a thin even layer of paint. If the paint is too thick it will take a long time to dry and it will be difficult to remove from the plastic sheet.

1. Fill in your design with the 3D Wonder Paint of your choice. Hold the applicator slightly above the plastic project sheet and gently squeeze to release the paint.
2. Use the applicator tip to spread the paint around. Be sure the paint covers all open areas.
3. When you are finished painting set it aside to dry. Depending on the thickness of the paint, heat and humidity, drying times may vary. For best results, allow your designs to dry overnight.



Keep any left over materials for touch-up and repair.

www.CreativityforKids.com

Our mission is to provide children with experiences that stimulate and encourage their natural creativity. Our open-ended products offer fun-filled opportunities for children to create, pretend, explore and learn.

Our Quality Promise
Since 1976 Creativity for Kids has been creating safe, innovative products that meet or exceed U.S. safety standards as determined by independent laboratory testing.

Sparkling 3D Wonder Paint™ Ornaments #1134000

© Faber-Castell USA, Inc. • Cleveland, Ohio 44125 • www.fabercastell.com
Designed in USA • Made in China • Conforms to ASTM D-4236 • Non-toxic Safe for children



#1134000
Ages 6 to 96



3D Wonder Paint - Goes on Light, Dries Bright!

This complete set includes everything you need for holiday and wintertime family fun. Use this amazing paint to create 6 holiday ornaments and fun festive window art.

3D Wonder Paint can be used to decorate mirrors or any smooth glass surface. Just check with an adult before applying 3D Wonder Paint to any surface.

Important Information About This Paint

- The paint included is a specially formulated non-toxic acrylic paint that dries permanently on most surfaces, so be careful.
- Paint may stain fabrics, furniture and other surfaces. Wear a smock or old clothes and cover your work area with newspaper.
- You will need to select a work area where your project can dry undisturbed for several hours or overnight.
- Clean up any spills immediately while the paint is still wet. Dried paint may be peeled off some but not all surfaces.
- To prevent the paint from drying out, cap paint when not in use. If the nozzle becomes clogged use the tip of a paper clip to clean it out.
- Window cleaner can be used to remove any paint residue from windows and mirrors. Check with an adult before using any cleaning product.
- 3D Wonder Paint projects may stick together. To preserve your designs, keep your projects separate from each other.
- When storing your ornaments and window art, use the plastic project sheets to protect them. Some plastic bags may also work. Test before using.
- 3D Wonder Paint projects may fade or change over time. This is a normal part of the crafting process. Extreme temperatures, heat and cold, may affect the paint and finished projects.
- Save any leftover paint for touch up and repairs, or to make new 3D Wonder Paint art.

Holiday Ornaments

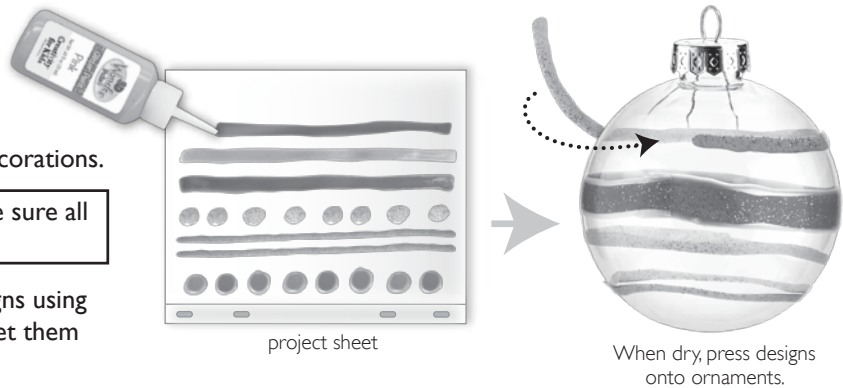
Decorate the clear plastic ornaments with amazing 3D Wonder Paint designs to create festive holiday decorations.

NOTE: When outlining and painting your designs, be sure all lines are connected and all spaces are filled in.

1. Working on your plastic project sheet, create designs using 3D Wonder Paint and 3D Wonder Outline Paint. Set them aside to dry overnight.
2. When the 3D Wonder Paint designs are completely dry, peel them and press them onto your plastic ornaments. If the designs begin to peel off, add a little craft glue or Wonder Paint to help hold them in place.
** Painting directly on the ornaments is not recommended as the wet paint will drip and run.*

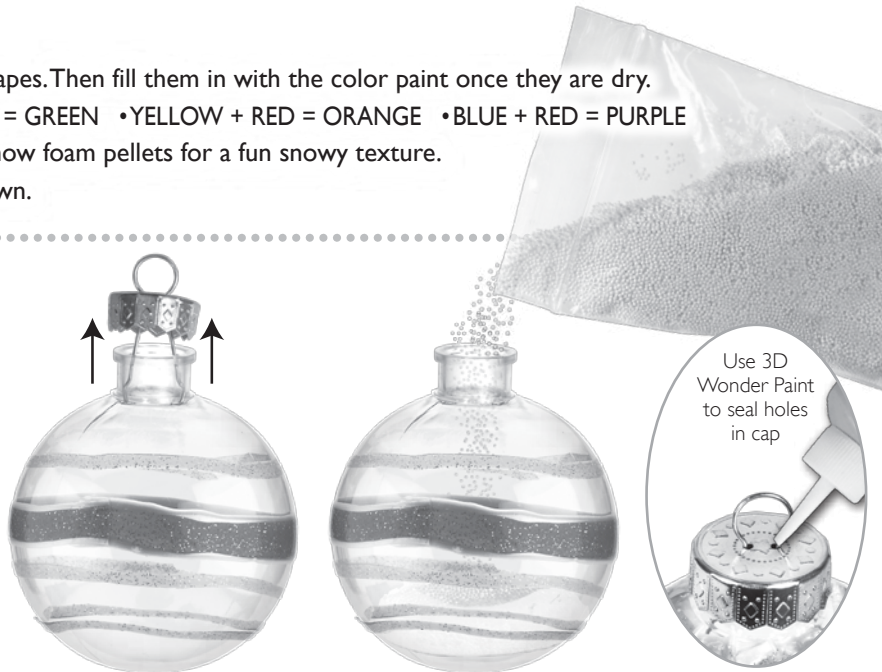
Try these design making tips:

- Use the 3D Wonder Outline Paint to outline shapes. Then fill them in with the color paint once they are dry.
- Mix colors to make your own: YELLOW + BLUE = GREEN •YELLOW + RED = ORANGE •BLUE + RED = PURPLE
- While the Wonder Paint is still wet add some snow foam pellets for a fun snowy texture.
- Follow the designs on the box or create your own.



Add Snow Foam Pellets

1. Remove the ornament cap by gently pulling it out as shown.
2. Carefully open the snow foam pellet bag and pour a small amount into the ornament.
3. Replace the cap by gently squeezing the wire prongs together so they will fit in the opening.
4. Add a drop or two of paint on the cap to keep the snow pellets from leaking out.



Ribbon Bows

1. Slide a ribbon through the hanging ring.
2. Tie a bow the same way you tie your shoes.
3. Use your own scissors to trim the ends as needed.



Tooby Loops™ Bows

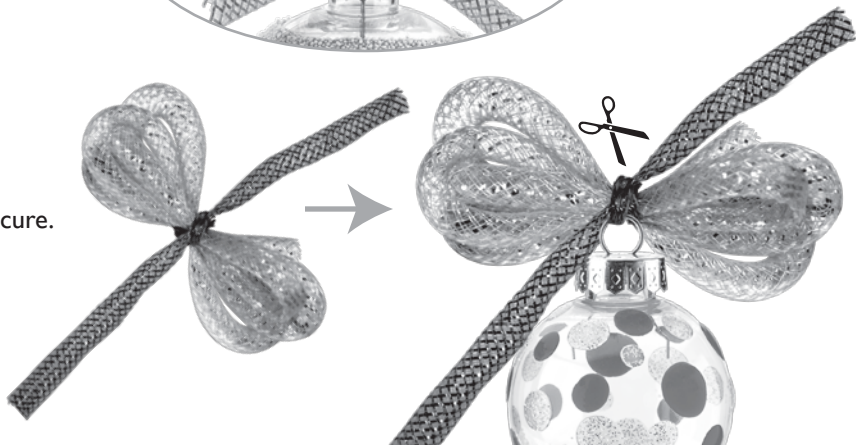
Single Loop Bow

1. Slide a piece of Tooby Loop through the hanging ring.
2. Tie a bow.
3. Trim the ends as needed.



Multi-Loop Bow

1. Wrap a Tooby Loop around your fingers to create a bundle of loops.
2. Tie a piece of Tooby Loop around the center to secure.
3. Tie the ends to the hanging ring.
4. Add a dab of your own glue to secure the knots.
5. Trim the ends as needed.



Window Art Patterns

