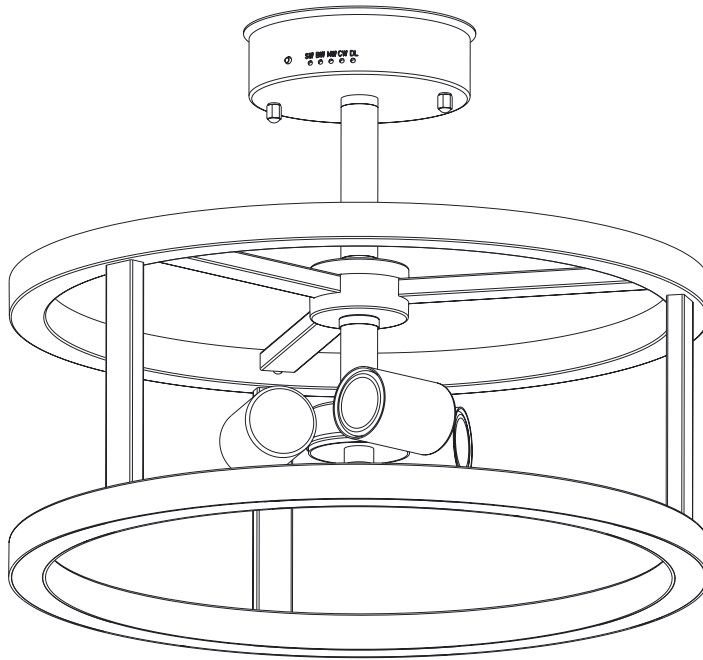


IMPORTANT SAFETY INSTRUCTIONS AND INSTALLATION GUIDE

DECORATIVE SEMI-FLUSH MOUNT CEILING LIGHT



Questions, problems, missing parts? Before returning to the store,
call Feit Electric customer service
8 a.m. - 5 p.m., PST, Monday - Friday

1-866-326-BULB (2852)
WWW.FEIT.COM

THANK YOU

We appreciate the trust and confidence you have placed in Feit Electric through the purchase of this Decorative Semi-Flush Mount Ceiling Light. We strive to continually create quality products designed to enhance your home. Visit us online to see our full line of products available for your home improvement needs. Thank you for choosing Feit Electric!

Table of Contents

Safety Information.....	2
FCC Statement.....	2
Warranty.....	2
Pre-Installation.....	3
Tools Required.....	3
Hardware Included.....	3
Installation.....	4-5
How to Operate.....	6

Safety Information

For your safety, always remember to:

- ☐ Turn off the power supply at the fuse or circuit breaker box before you install the fixture.
- ☐ Ground the fixture to avoid potential electric shocks and to ensure reliable starting.
- ☐ Double-check all connections to be sure they are tight and correct.
- ☐ Wear rubber soled shoes and work on a sturdy wooden ladder.
- ☐ Account for small parts and destroy packing material, as these may be hazardous to children.

This fixture is designed for use in a circuit protected by a fuse or circuit breaker. It is also designed to be installed in accordance with local electrical codes. If you are unsure about your wiring, consult a qualified electrician or local electrical inspector, and check your local electrical code.

MIN 90 C SUPPLY CONDUCTORS

FCC STATEMENT

Supplier's Declaration of Conformity:

47 CFR § 2.1077 Compliance Information

Responsible Party: Feit Electric Company

4901 Gregg Road, Pico Rivera, CA 90660, USA 562-463-2852

Unique Identifier:

FM15/6WY/NL/BLK

This device complies with part 15 of the FCC Rules. Operation is subject to the following two conditions: (1) This device may not cause harmful interference, and (2) this device must accept any interference received, including interference that may cause undesired operation. Note: This equipment has been tested and found to comply with the limits for a Class B digital device, pursuant to part 15 of the FCC Rules. These limits are designed to provide reasonable protection against harmful interference in a residential installation. This equipment generates, uses and can radiate radio frequency energy and, if not installed and used in accordance with the instructions, may cause harmful interference to radio communications. However, there is no guarantee that interference will not occur in a particular installation. If this equipment does cause harmful interference to radio or television reception, which can be determined by turning the equipment off and on, the user is encouraged to try to correct the interference by one or more of the following measures: Reorient or relocate the receiving antenna. Increase the separation between the equipment and receiver. Connect the equipment into an outlet on a circuit different from that to which the receiver is connected. Consult the dealer or an experienced radio/TV technician for help. Any changes or modifications not expressly approved by the manufacture could void the user's authority to operate the equipment. CAN ICES-005 (B).

Warranty

LIMITED WARRANTY

This product is warranted to be free from defects in workmanship and materials for up to 1 year from date of purchase. If it fails to do so, please contact the Customer Service Team at 1-866-326-2852 or visit www.feit.com.

PRODUCT SPECIFICATIONS

- 120VAC, 60Hz
- Not Dimmable
- Suitable for Damp Location



CAUTION: Turn off the main power at the circuit breaker before installing the fixture, in order to prevent possible shock.



CAUTION: Consult a certified Electrician to ensure correct branch circuit conductor.



WARNING: RISK OF SHOCK. House electric current can cause painful shock or serious injury unless handled properly.



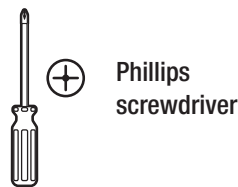
CAUTION: RISK OF FIRE. Before installing your lighting fixture, thoroughly review this installation manual. If you do not have sufficient electrical wiring experience have your fixture installed by a certified electrician. All electrical connections must be in accordance with Local and National Electrical Code (NEC) Standards. Reliable operating temperature is 0°F –120°F. For more information including dimmer compatibility visit www.feit.com

NOTICE: All connections must be in accordance with local electrical standards and the National Electrical Code (N.E.C.)

Remove the fixture and the mounting package from the box and make sure that no parts are missing by referencing the illustrations on the installation instructions.

Pre-Installation

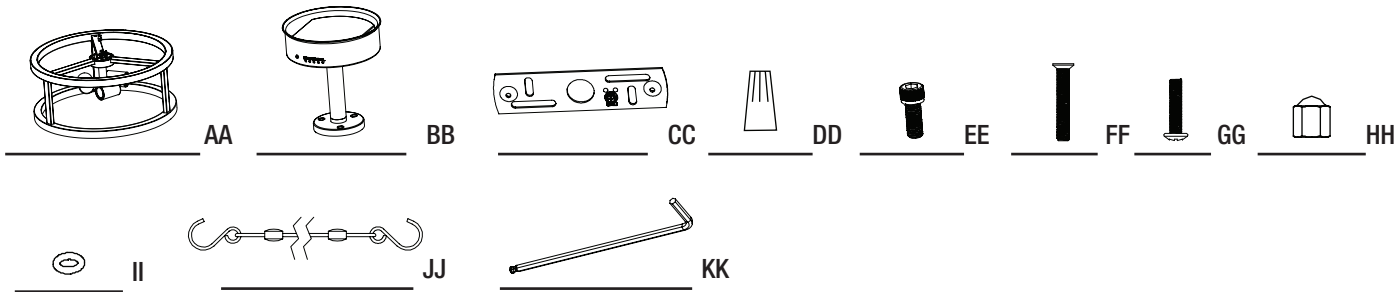
TOOLS REQUIRED



HARDWARE INCLUDED



NOTE: Hardware not shown to actual size.



Part	Description	Quantity
AA	Fixture	1
BB	Stem and Canopy	1
CC	Crossbar Bracket	1
DD	Wire Nuts	3
EE	Socket Screws	3
FF	Crossbar bolts	2
GG	Junction Box Mounting Screws	2
HH	Fixture Mounting Finials	2
II	Fixture Mounting Washers	2
JJ	Safety Cable	1
KK	Hex Key	1

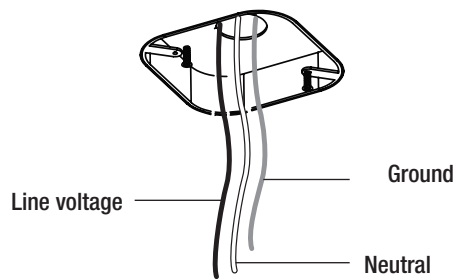
Installation

1 Turning Off the Power

- Turn the power OFF at the switch and fusebox or the circuit breaker.
- Place the wall switch in the Off position.

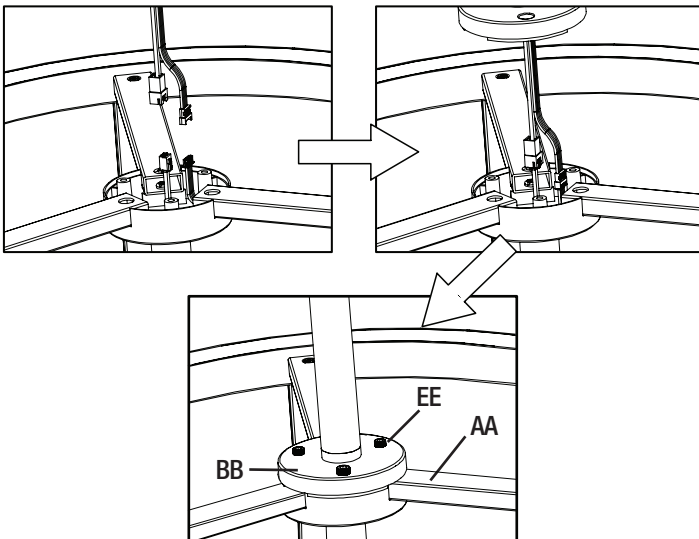
2 Identifying the Wires

- Identify the wiring: (black - line voltage, white - neutral and bare copper - ground)



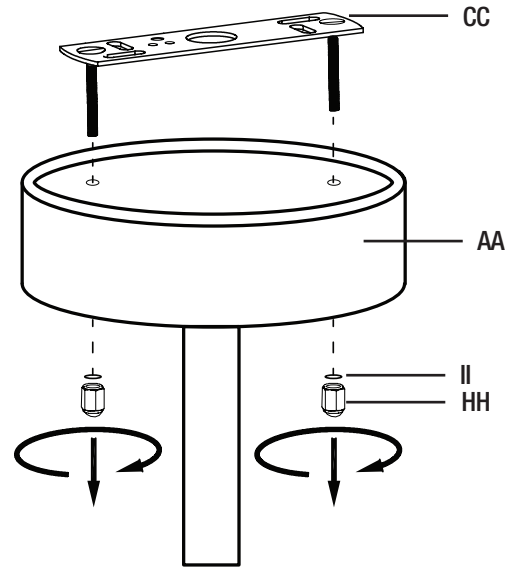
3 Connecting the Stem the the Body

- Carefully attach the wires from the stem (BB) to the body of the fixture (AA). Tuck wires into the body of the fixture (AA) carefully to avoid pinching wires. Make sure the threaded holes are aligned. Insert socket screws (EE). Using hex key (KK), turn socket screws (EE) clockwise until screws are fully inserted.



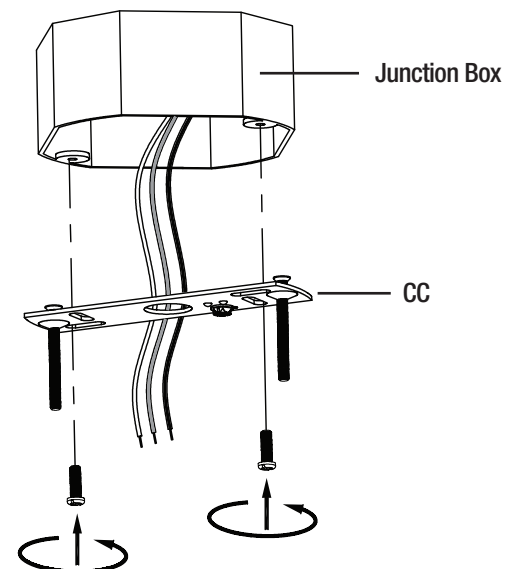
4 Removing the Crossbar Bracket from the Fixture

- Remove the crossbar bracket (CC) from the fixture (AA) by unscrewing the fixture mounting finials (HH) and mounting washers (II) from the canopy.



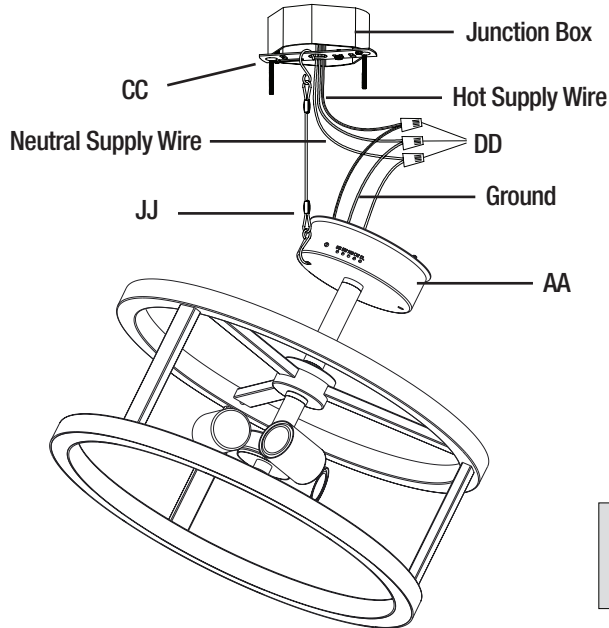
5 Installing the Crossbar Bracket

- Secure the crossbar bracket (CC) to the junction box by inserting the two junction box mounting screws (GG) through the slots on the crossbar bracket (CC) that best align to the junction box.



6 Connecting the Wires

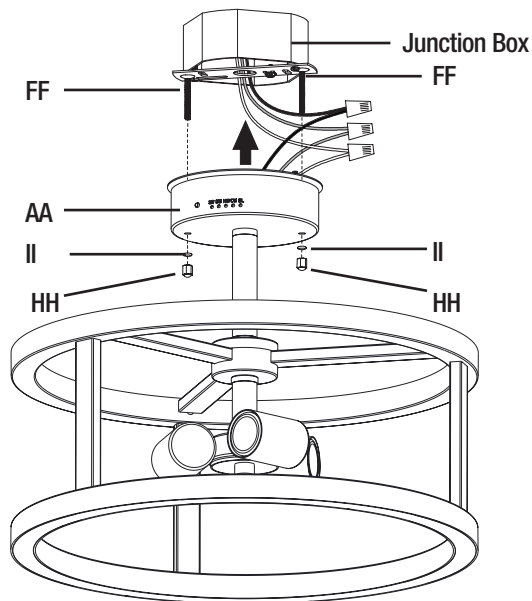
- To ground the fixture (AA), connect the bare copper ground wire from the supply line and the fixture ground wire to the ground screw on the crossbar bracket (CC) or use a wire nut as shown below. Use the wire nuts (DD) provided to connect the white fixture wire to the neutral supply wire and the black fixture wire to the hot supply wire.



NOTE: Use the safety cable (JJ) to hold the fixture (AA) to the crossbar bracket (CC) during this step.

7 Installing the Fixture Canopy

- Remove the safety cable (JJ). Tuck the wires into the junction box and then lift the fixture (AA) canopy over the crossbar bolts (FF) through the fixture canopy holes. Secure the fixture (AA) canopy by inserting the fixture mounting washers (II) and hand tightening the mounting finials (HH) to the end of the crossbar bolts (FF).



How to Operate the Katalyst Semi-Flush Mount



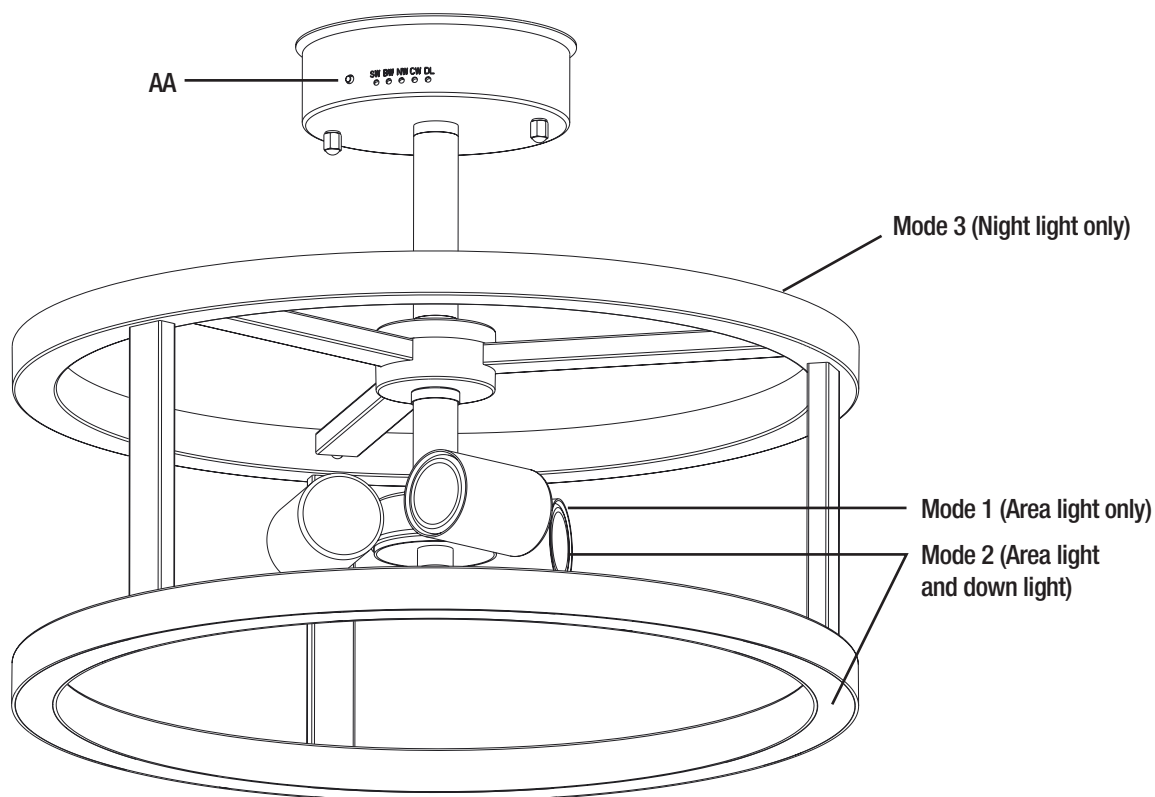
NOTE: Select desired white color temperature for the down light located on the top of the canopy via push button (AA). Continue to push the button to cycle through all the available white colors.



NOTE: (If unit is turned off for more than 10 seconds, the mode will automatically be reverted to the default mode of Mode 1 (area light only).)

1 Operating Instructions

- Flip wall switch ON after installation to enter Mode 1 (area light only; (3) E26 sockets).
- Flip wall switch OFF and back ON in less than 5 seconds to enter the Mode 2 (area light + down light).
- Flip wall switch OFF and back ON again in less than 5 seconds to enter Mode 3 (night light only).



NOTE: LED down light will remain the same color unless the white color selection button that is located on the canopy is pushed to cycle through the different white colors.



Questions, problems, missing parts? Before returning to the store,
call Feit Electric customer service
8 a.m. - 5 p.m., PST, Monday - Friday

1-866-326-BULB (2852)
WWW.FEIT.COM

Retain this manual for future use.