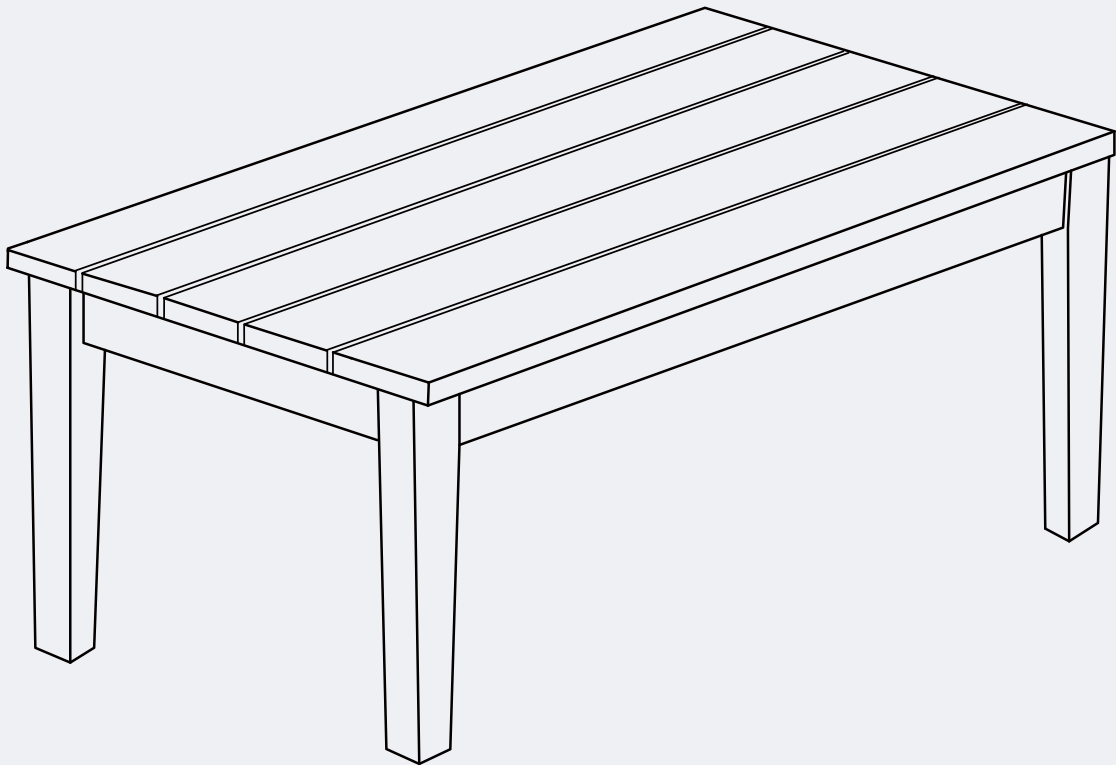


INSTRUCTION MANUAL



Poly Coffee Table

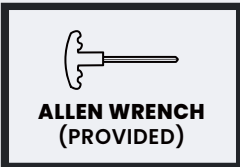
V1.0

! CARE & MAINTENANCE

Please keep these instructions for your future reference.

- Be careful when assembling to avoid damaging the plating of the surface.
- Clean the chair with lukewarm water, mild detergent & soft cloth.
- Firmly secure all bolts before use. Do not use any part of this item as a step ladder.
- Make sure that all bolts, screws, and nuts are secure every 90 days.
- Do not use or store this item in the proximity of open flame or flammable/combustible chemicals.
- Be aware that some parts are heavy and have sharp edges.
- Do not overtighten screws (insert all screws before tightening screws).
- Please do not exceed the weight limitations of this item.

TOOLS REQUIRED



**TABLE
300 LBS
CAPACITY**

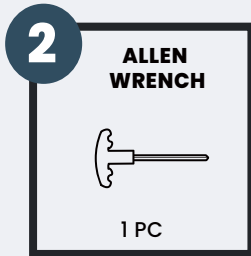
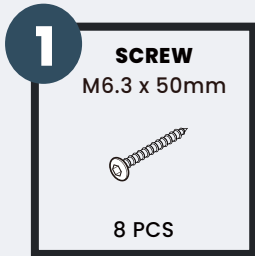


**1 PERSON
ASSEMBLY**

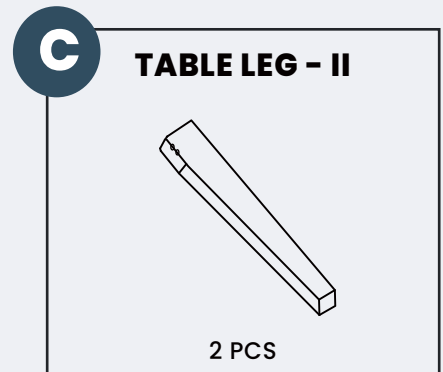
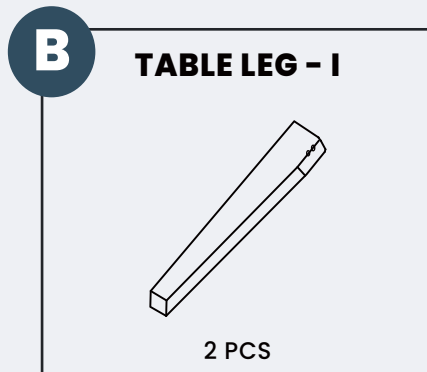
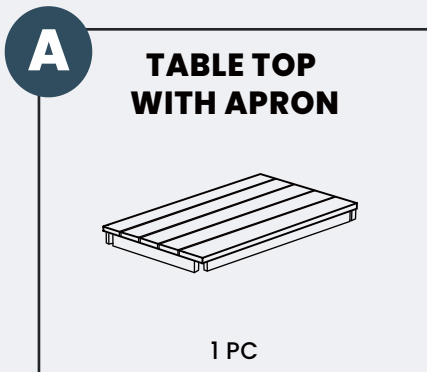


**UP TO 20 MIN.
ASSEMBLY**

HARDWARE

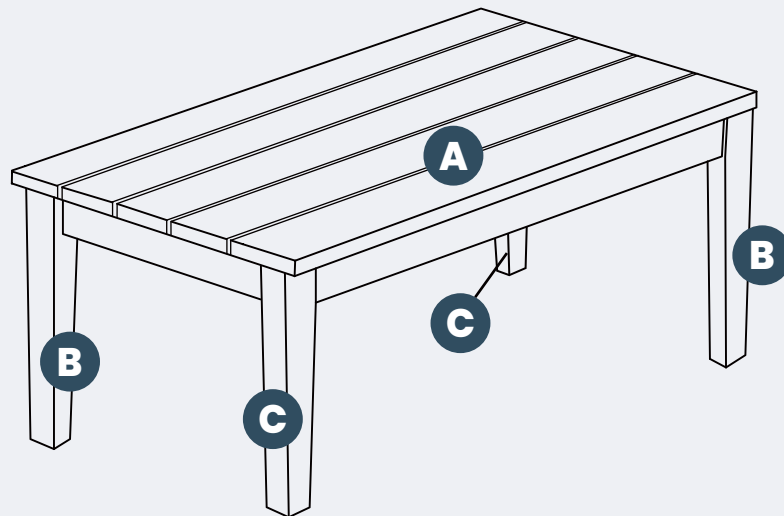


PARTS



PRODUCT ASSEMBLY - OVERALL VIEW

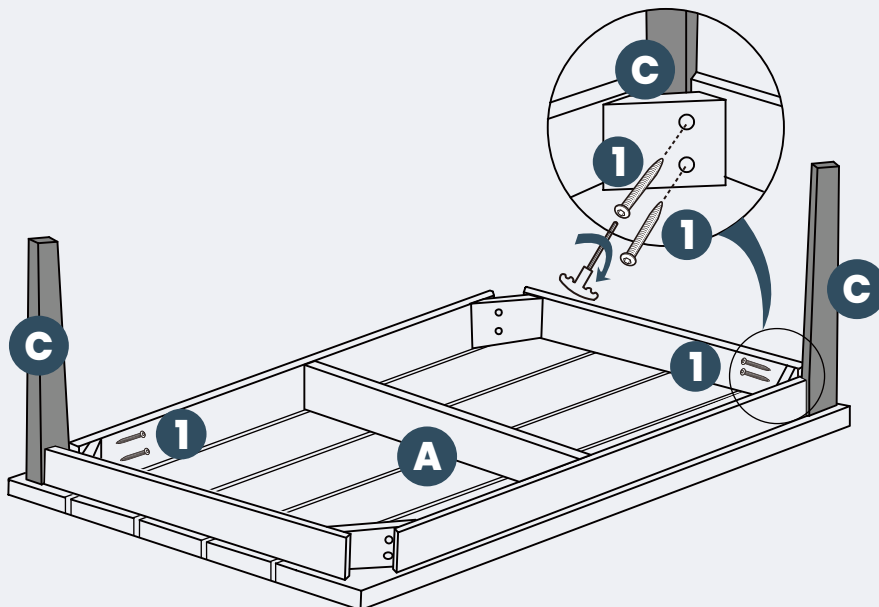
Look at the overall view of this table and learn the exact position of each part to be assembled.



PRODUCT ASSEMBLY

- 1 Place **Part A Table Top** upside down, attach **part C Legs** to **part A Table Top** with 4 pcs of Hardware **#1 Screw**.

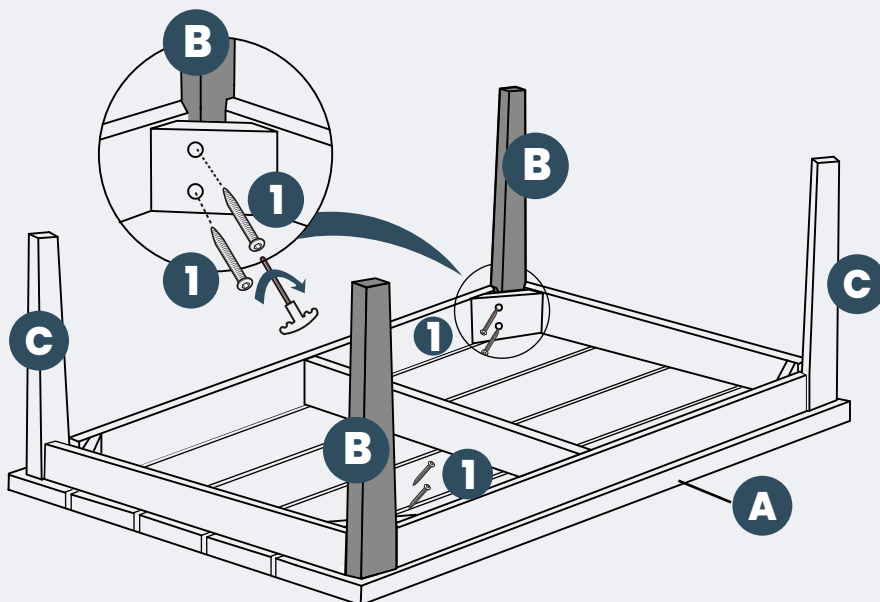
Pay attention that the legs facing each other diagonally as below.



PRODUCT ASSEMBLY

2

Attach **part B Legs** to **part A Table Top** with 4 pcs of Hardware **#1 Screw**.

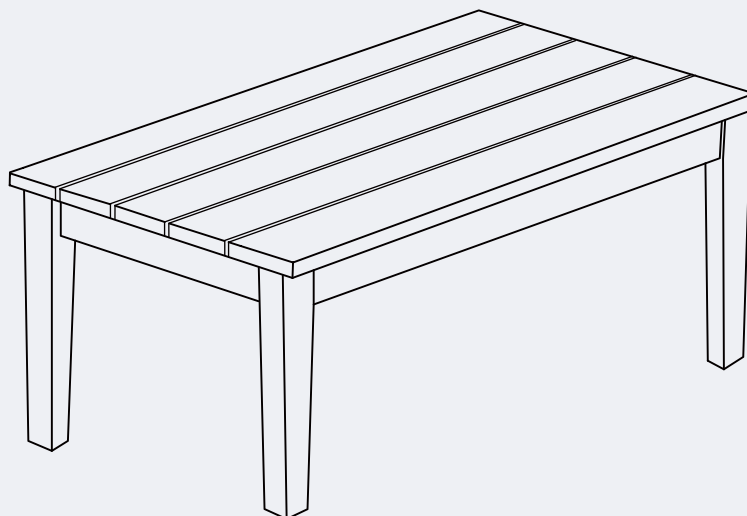


ATTENTION:

Two pairs of legs with different holes to assemble. Try the other pair of legs if you find the holes don't match.

3

Tighten all the screws again to ensure this table is stable enough to use.



CLEANING TIPS

REGULAR CLEAN: Use a mixture of warm water and mild soap. Gently scrub the surface with a soft bristle brush to remove any dirt or stains.

QUICK CLEAN: You can simply wipe down the furniture with a damp cloth.

Regular cleaning not only preserves the aesthetic appeal of your furniture, but also helps extend its lifespan.