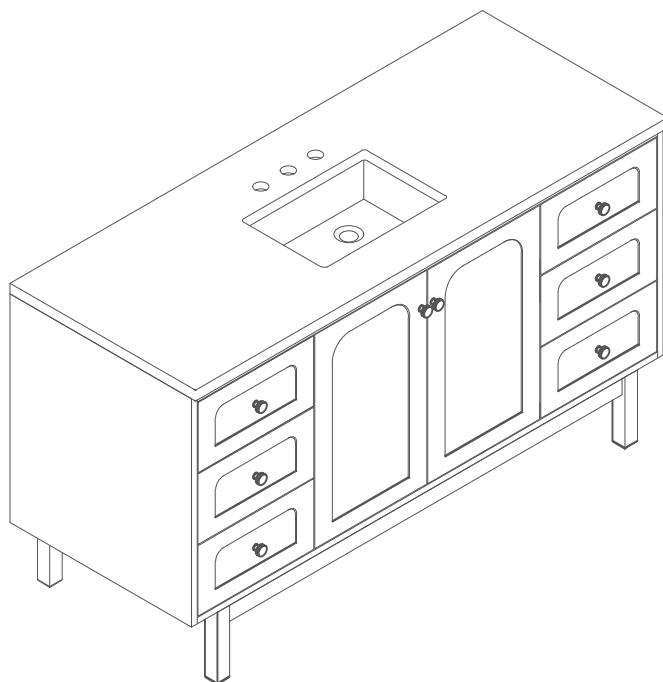


60"S LAURENT VANITY

JAMES MARTIN
VANITIES

545-V60S-LNO

FREEPOWER COMPATIBLE



Features and Materials

Solids: Ash and Yellow Poplar

Veneers: Flat Cut Ash

Panels: Plywood

Installation Type: Floor Standing with Wood Base or Wall Mounted

Number of Basins: Two, with Optional 3cm Top

Vanity Top Included : NO, Optional 3cm Tops Available with Sinks

Overflow: Yes, Front Facing

Number of Doors: Two

Number of Drawers: Six

USB/Power Component: Yes (ETL5011080)

Cord Length: 6'6"

Assembly Type: Installation of Optional 3cm Top with Sink

Assembly Type: Remove Base to Wall Hang (Hardware Included)

Bamboo Storage Tray: One

Drawer Box Material and Construction: 12mm Plywood/English Dovetail

Joinery Hardware Material and Finish: Zinc Alloy in Champagne Brass

Fits Drain Hole Size: 1 3/4"

Full Extension, Soft Close Glides

European Soft Close Hinges

Aluminum Laminate Drawer Liners

Adjustable Levelers

Dimension

Width: 59-7/8"

Depth: 23"

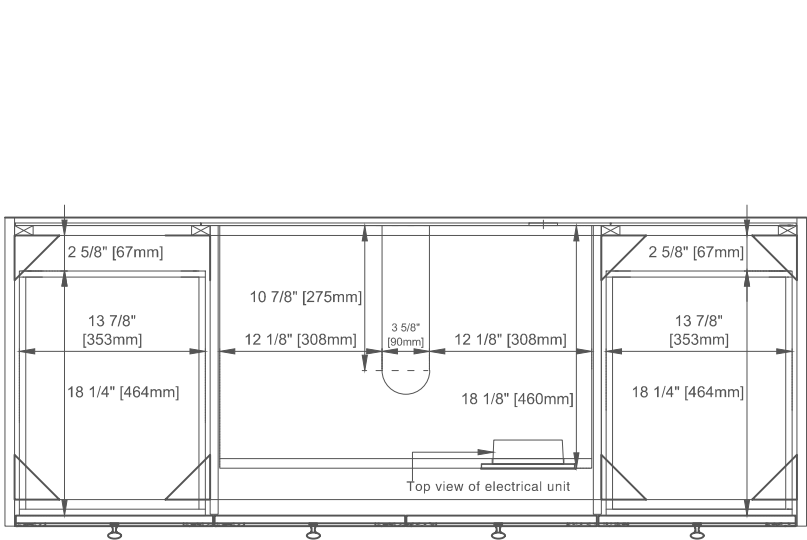
Height: 33"

Rough-In Height: 21-1/2"

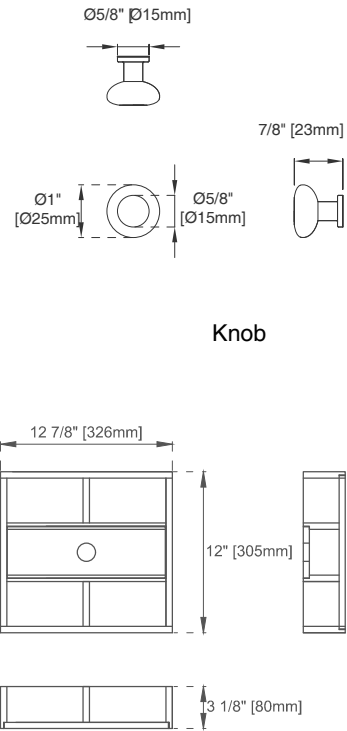
60"S LAURENT VANITY

545-V60S-LNO

JAMES MARTIN
VANITIES

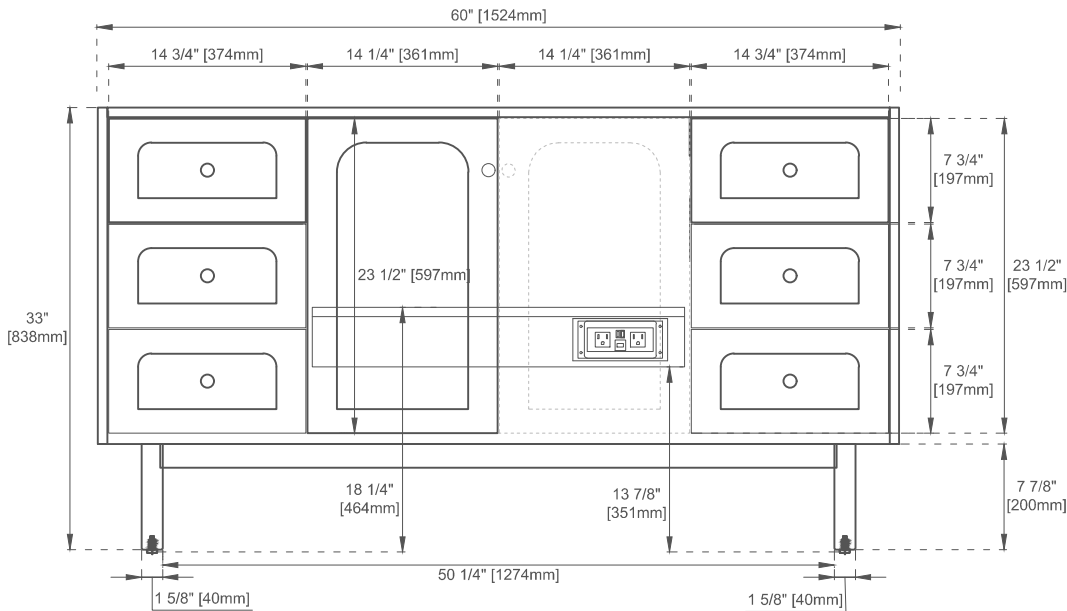


Top View



Bamboo Drawer Organizer

am



Front View

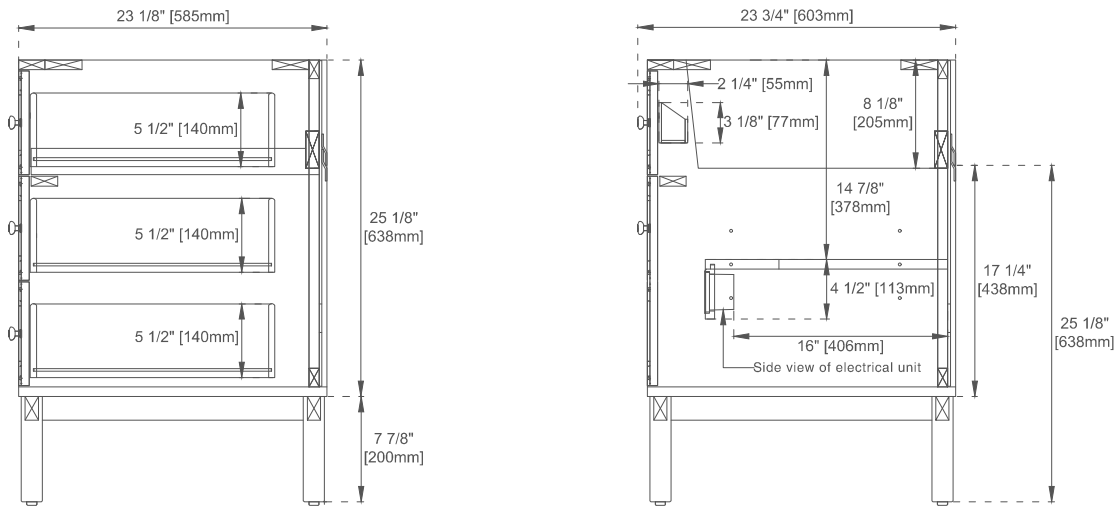
All dimensions are nominal
Diagrams are of cabinet only—James Martin Optional Countertops and sinks are not shown

Visit website for warranty and installation information
www.jamesmartinvanities.com

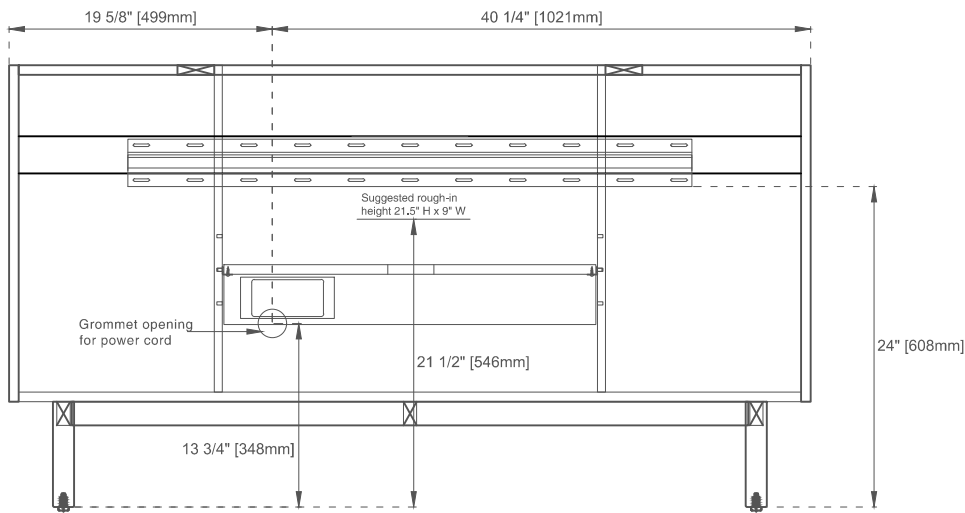
60"S LAURENT VANITY

545-V60S-LNO

JAMES MARTIN
VANITIES



Side View



Back View

All dimensions are nominal
Diagrams are of cabinet only—James Martin Optional Countertops and sinks are not shown

Visit website for warranty and installation information
www.jamesmartinvanities.com