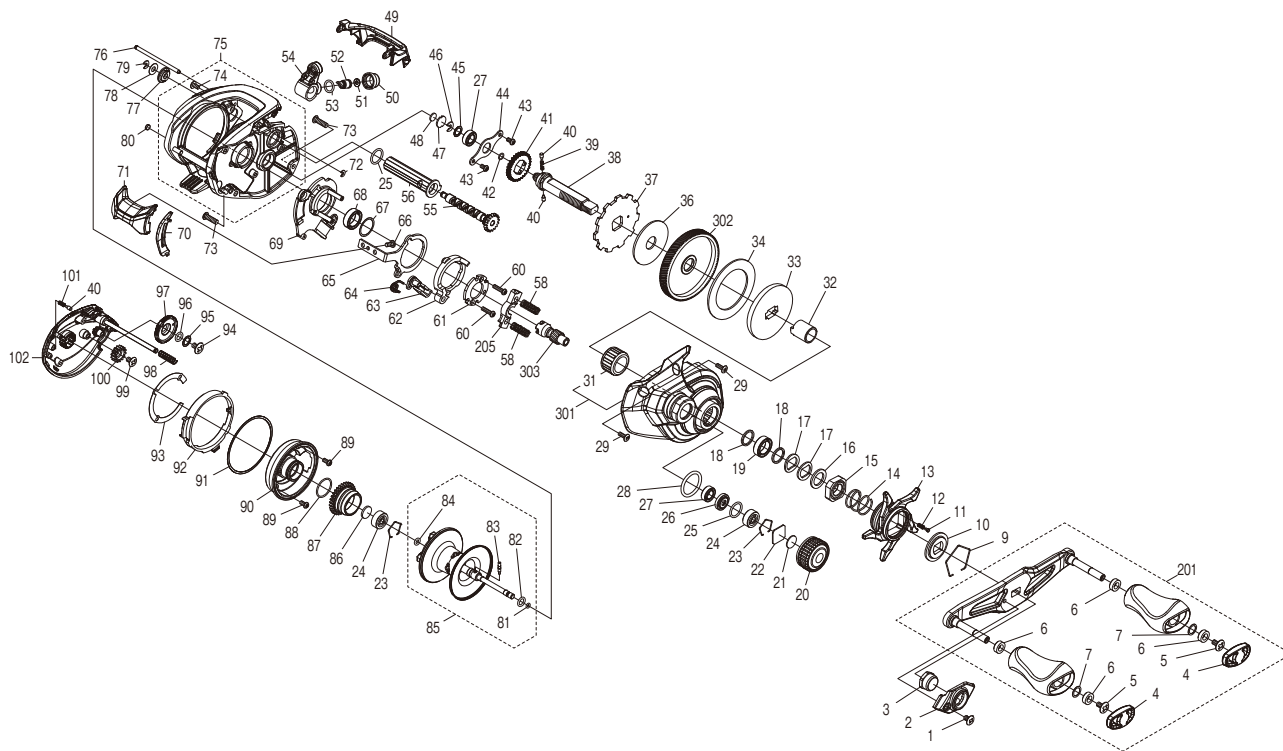


SHIMANO

CURADO

CU200M



(51RL621A20X)

#	Part No.	Description	#	Part No.	Description	#	Part No.	Description
1	10DV5	Screw	38	13YNU	Drive Shaft	74	10E8N	Screw
2	144EC	Handle Nut Plate	39	10JDY	Idle Gear Spring	75	144GX	Frame Assembly
3	1013J	Handle Nut	40	10HJG	Idle Gear Pin	76	10E2G	Stabilizer Bar
4	10SS2	Handle Knob Seal	41	101K8	Idle Gear A	77	100G7	Level Wind Guard Bushing
5	10LFA	Screw	42	108WU	O Ring	78	10FJZ	Washer
6	10PXZ	Bushing	43	10S3Y	Screw	79	105NC	E Lock
7	104FH	Washer	44	109T1	Drive Shaft Retainer	80	108PY	Washer
9	10KXW	Click Plate Retainer	45	10G6D	Washer	81	100BH	O Ring
10	10J26	Star Drag Click Plate	46	105NK	E Lock	82	10TM7	O Ring
11	10MFC	Click Pin	47	143CG	Metal Spacer	83	10MD0	Spool Clutch Pin
12	10BT2	Click Spring	48	14079	Rubber Spacer	84	10EZ7	O Ring
13	144ED	Star Drag	49	144EF	Level Wind Protector	85	144EB	Spool Assembly
14	10A70	Star Drag Spring	50	10FJB	Pawl Cap	86	10EX5	Bearing Spacer
15	10A3T	Star Drag Nut	51	10CFU	Washer	87	101DR	Brake Ring Gear
16	10J1P	Star Drag Spacer	52	10BHQ	Line Guide Pawl	88	100GW	O Ring
17	109F5	Washer	53	108WQ	O Ring	89	10L1Q	Screw
18	100SE	Washer	54	10R51	Line Guide Pawl Holder Assembly	90	144GZ	Brake Case
19	105BK	Ball Bearing	55	144EG	Worm Shaft	91	140UF	Washer
20	13YNS	Cast Control Cap	56	13YNV	Level Wind Guard	92	144EK	B Side Plate Cam Lever
21	10896	Cast Control Spacer (B)	58	100U9	Yoke Spring	93	144EL	Washer
22	1085F	Cast Control Spacer (A)	60	10LV0	Screw	94	103LE	Screw
23	1054D	Bearing Retainer	61	100US	Clutch Cam Retainer	95	10G6D	Washer
24	105C3	Ball Bearing	62	100UK	Clutch Cam	96	108WS	O Ring
25	101GT	O Ring	63	101M5	Clutch Pawl Assembly	97	10SAZ	Brake Dial
26	100BL	Bearing Spacer	64	104CP	Clutch Pawl Spring	98	10KNH	Spring
27	105BP	Ball Bearing	65	13YNW	Clutch Plate	99	103L7	Screw
28	108WK	O Ring	66	10559	Screw	100	10CLF	Idle Gear
29	10LCY	Screw	67	10190	Washer	101	10GQZ	Click Spring
31	1005E	Roller Clutch Bearing	68	10EX8	Ball Bearing	102	144H1	B Side Plate Assembly
32	100BM	Roller Clutch Inner Tube	69	144GW	Clutch Guard Assembly	201	140R3	Handle Assembly
33	100BK	Key Washer	70	144EH	Clutch Bar Guide B	205	10S8M	Yoke
34	10SSF	Drag Washer	71	144EJ	Clutch Button	301	144H5	A Side Plate Assembly
36	10CHY	Drag Washer	72	105NB	E Lock	302	10SGD	Drive Gear
37	13YNT	Anti-Reverse Ratchet	73	100UV	Screw	303	10SGW	Pinion Gear

Please note that the number of adjusting washers may not be the same as shown in the exploded views.
(Adjustment will vary with each individual product.)

(230403)_001