

APP USER GUIDE



24/7 HELP For 24/7 customer support, visit feit.com/help

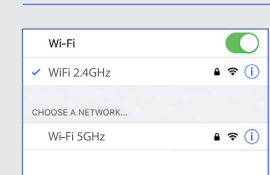
System Requirements
Minimum: iOS 11.0, Android™ 6.0 Marshmallow or higher
- Dedicated 2.4GHz Wi-Fi Network -

Your screen images may differ from this user guide.

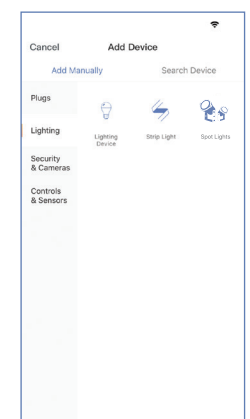
BEFORE USING THIS USER GUIDE SEE INCLUDED INSTALLATION GUIDE FOR PROPER PRODUCT INSTALLATION.

NOTE: Only works with 2.4GHz Wi-Fi networks.

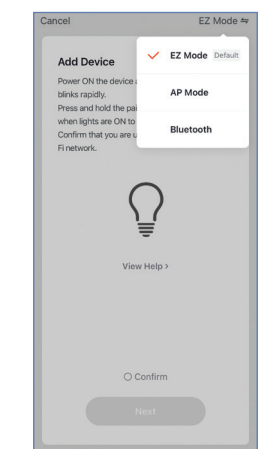
Go to your Wi-Fi settings and connect your phone to your 2.4GHz Wi-Fi network.



2 Make sure you are connected to a **2.4GHz Wi-Fi Network**, then tap **Lighting** and then tap **Spot Lights**.



3 Tap upper right corner and make sure you have **EZ Mode** selected. Follow the steps on your smart device to complete setup.



Set Up Device

- Download the **Feit Electric** app.
- Launch the **Feit Electric** app. Enter an email address to register, then tap **Continue**. A verification code will be sent to your email.
- Create a password then tap **Done**.

Permissions & Location Access

4 **Allow notifications** (highly recommended).

5 **Allow the Feit Electric** app to access your location to help connect your Spot Lights.

Adding Device

NOTE: Only works with 2.4GHz Wi-Fi networks

- Install and power On light(s) then tap **Add Device** or the plus (+) sign on upper right corner.

Simple Pairing Mode

- Enable Bluetooth on your smart device for simple pairing.

- Make sure you are connected to a 2.4GHz Wi-Fi Network. The device name(s) will pop up for Simple Pairing enabled devices. Tap on **Go to add**.

- Make sure the lights are blinking, then select one from the list. Tap on + sign.

NOTE: If lights are NOT blinking, press and hold the Wi-Fi button on the Control Box for 5 seconds when lights are On to enter pairing mode. (See manual for more info).

- Select your 2.4GHz Wi-Fi network, tap **Next**.

- The status window will appear and show progress toward set-up.

NOTE: If unsuccessful, the "Failed to Add" screen will appear. Quit the app and repeat the previous steps.

- To rename the device, tap the **Pen** icon, enter the new name and tap **Done**. The flood light is now ready to be controlled with the **Feit Electric** App.

NOTE: Constant power to the Spot Lights is required at all times.

Alternative Set-up Method EZ Mode

- Install and power On light(s) then tap **Add Device** or the plus (+) sign on upper right corner.

NOTE: Use this pairing mode to connect multiple devices at a time or if there are issues with Simple Pairing Mode.

Features

- Individual Spot Lights On/Off**
Tap the Spot Lights icon to turn the Light On/Off.
- Individual Spot Lights Setting**
Press and hold the icon for two seconds for light settings.

Dimming

- Slide the **dimming bar** left or right to set the brightness level.

Controlling All Lights

- To control all lights, tap on the **Checkmark** icon. Then slide to adjust the **brightness**. Finally tap on the **color** to apply the settings.

Controlling Individual Lights

- Tap on the **Checkmark** icon on the bottom to select single light. Tap on the **Color** to change and slide to adjust the color. Then tap on the lights to change the color individually. Use the **Eraser** icon to turn off individual light.

- Slide your finger up or down the chosen **color** to adjust saturation.

- Preset colors can be selected in the corner with a square icon.

- Tap on **White** to access the tunable white palette.

- Tap on the **color palette** icon to select a preset color effect.

Schedule

- Tap on the clock icon.
- Tap on the + icon.

- Choose a Start time, select the days you'd like them on, then choose the action to be turn on.
- Once you have selected the settings for on time click save. In order to have a turn off time, repeat the previous step but change the action to turn off.

Timer

Switch the Timer on. Set the time and confirm.

- A message will appear in the Timer section.

Additional Features Renaming/Removing devices

- Additional features are available in the context menu, including renaming and removing devices. Tap the context menu in the upper right corner.

Groups

- Tap the **Groups** icon at the bottom of the app home screen.

NOTE: To create groups you will need at least two sets of Spot Lights. You can only group a Spot Light with other Spot Lights.

- Tap on **Create Group**.
- Tap on **Spot Lights**.

- Select the Spot Lights that you want to group.
- Tap the group name and enter the name of the group.

- Once the group is named and the Spot Lights are selected, tap **Save** in the upper right corner.

Manage Groups

- Tap the **Groups** icon.
- Tap the context menu in the upper right corner (•••).
- Tap **Manage Group**.

- Select the group to edit.
- Once selected, tap **Edit** in the upper right hand corner.

- Rename the group or remove a Spot Lights from the group. Once complete, tap **Save** in the upper right corner.

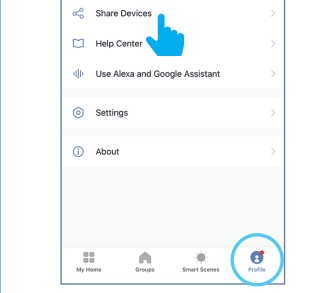
Delete Groups

- Tap the **Groups** icon.
- Tap the context menu in the upper right corner (•••).
- Tap **Delete Group**.

- Select the group to delete. Once selected, tap **Delete Group** in the upper right corner.
- Tap **Confirm**.

Share Control of a Device (Two Methods)

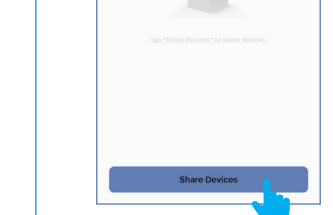
1 Method 1: Tap the **Profile** icon, then tap **Share Devices**.



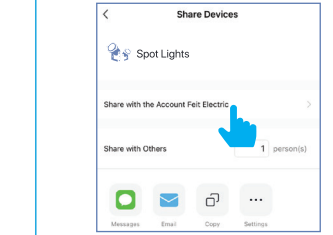
A Method 2: From the Spot Lights' settings menu, tap the **Pen** icon located in the upper right corner. Then tap **Share Devices**.



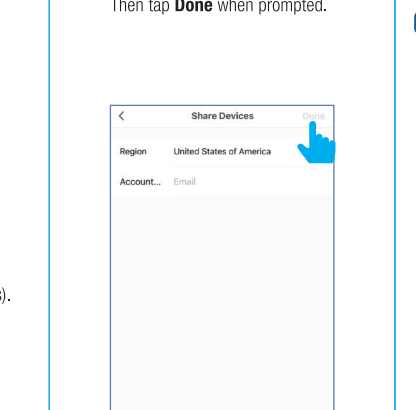
Tap Share Devices .



3 Tap **Share with the Account Feit Electric**, or choose an alternative method of sharing (Messages, Email, Copy or Settings).



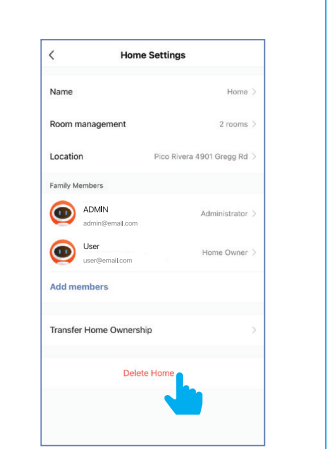
4 Enter the account name of the person you want to share with (this is typically their email address). Then tap **Done** when prompted.



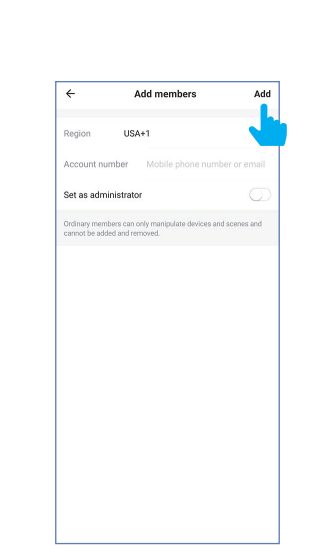
NOTE: New members must set up an account before sharing is possible.

Share Control of All Devices Within a Location

1 From the home screen, tap **Profile**, then **Location Management**, then the location you would like to share. Tap **Add members**.

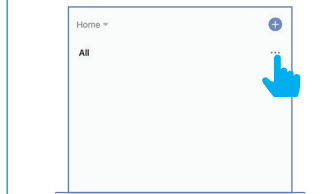


2 Enter the new member's email address then tap **Add**.

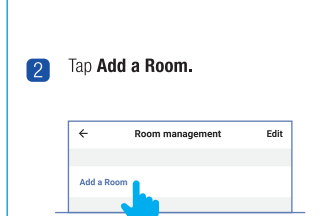


Room Management

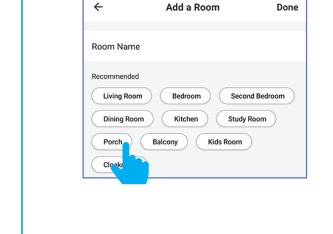
1 Tap the three dots from the home menu, then tap **Room Management**.



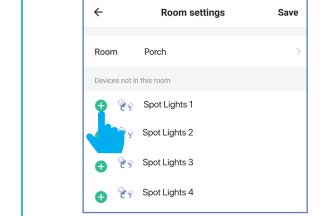
2 Tap **Add a Room**.



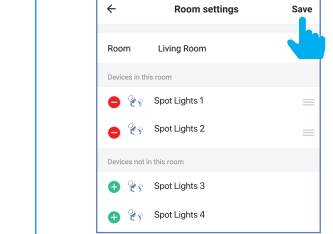
3 Tap on a preset room name or create your own.



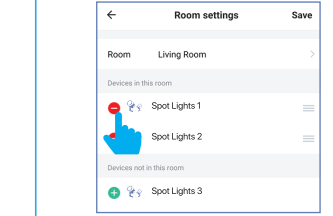
4 Add individual lamps by tapping on the icon **+** next to each Spot Lights' name.



5 When finished, tap **Save** in the upper right corner.

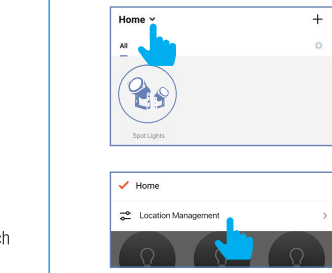


6 Remove individual Spot Lights by tapping on the icon **-** next to each Spot Lights' name.

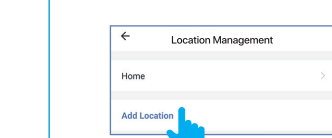


Home Management

1 Tap **Home** from the main menu, then tap **Location Management**.



2 Tap **Add Location** to indicate where the devices are located.



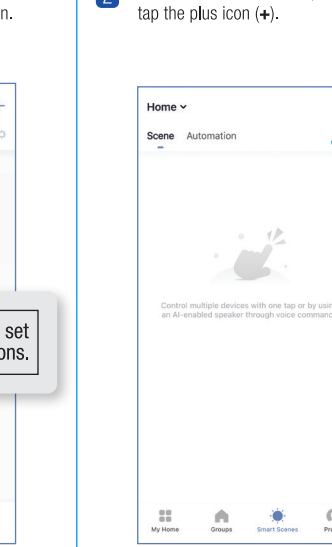
Smart Scenes

1 From the **My Home** page, tap **Smart Scenes** at the bottom of screen.

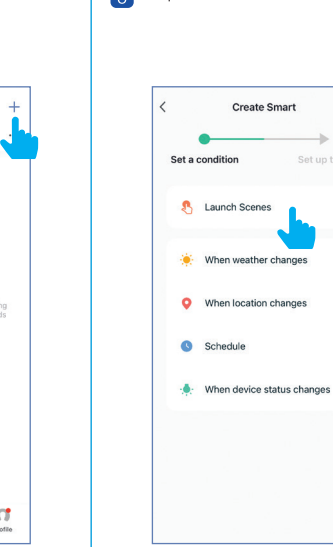


NOTE: Use Smart Scenes to set up an action or group of actions.

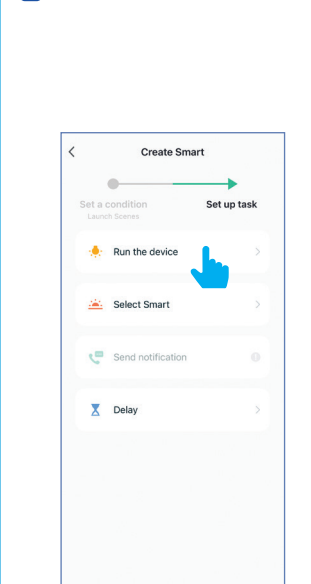
2 In the **Smart Scenes** tab, tap the plus icon (+).



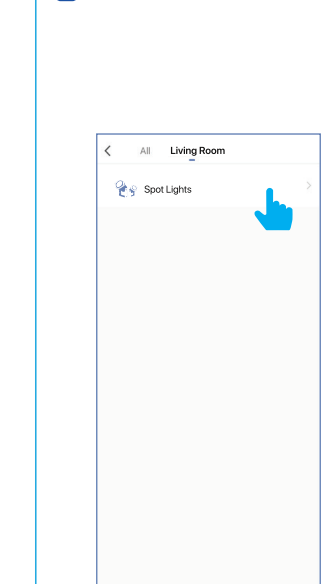
3 Tap on **Launch Scenes**.



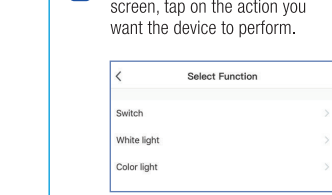
4 Tap on **Run the device**.



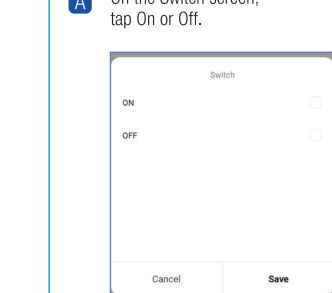
5 Select your device to initiate an action.



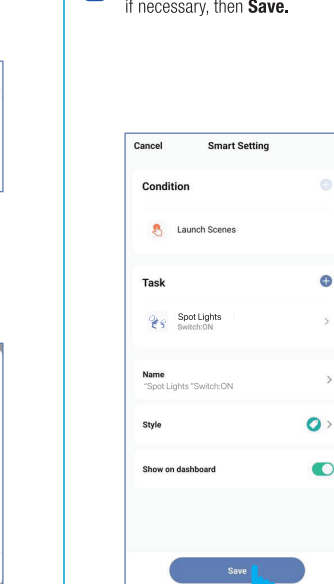
6 On the **Select Function** screen, tap on the action you want the device to perform.



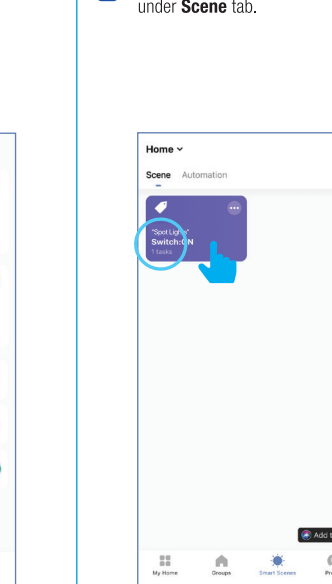
A On the **Switch** screen, tap **On** or **Off**.



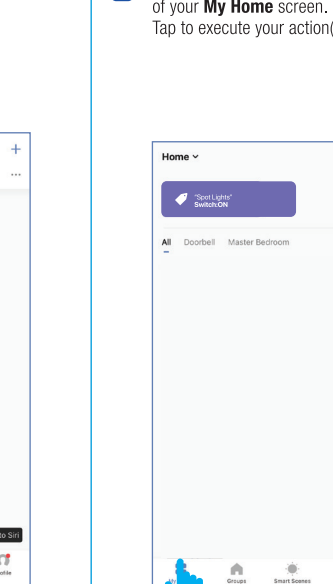
7 Review your scene, edit them if necessary, then **Save**.



8 Your action(s) will appear under **Scene** tab.

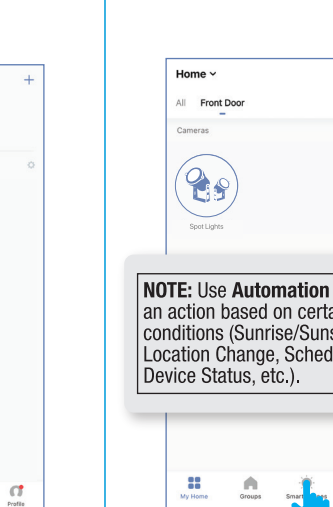


A It will also appear on the top of your **My Home** screen. Tap to execute your action(s).



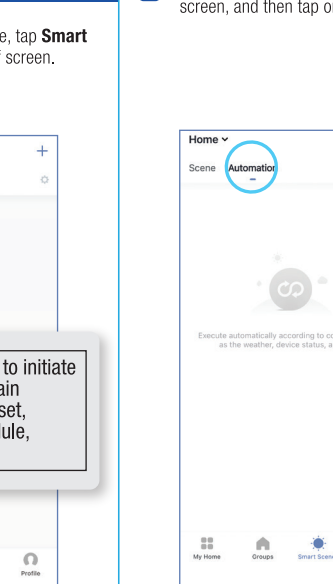
Automation

1 From the **My Home** page, tap **Smart Scenes** at the bottom of screen.

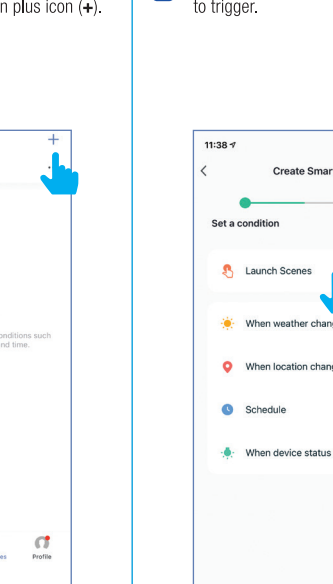


NOTE: Use Automation to initiate an action based on certain conditions (Sunrise/Sunset, Location Change, Schedule, Device Status, etc.).

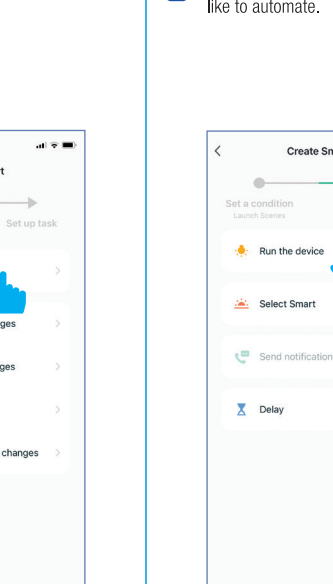
2 Tap **Automation** at the top of the screen, and then tap on plus icon (+).



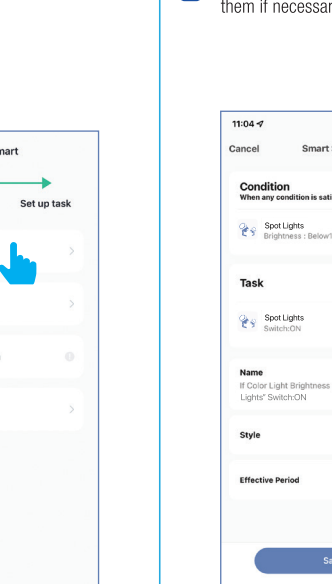
3 Set a **condition** you would like to trigger.



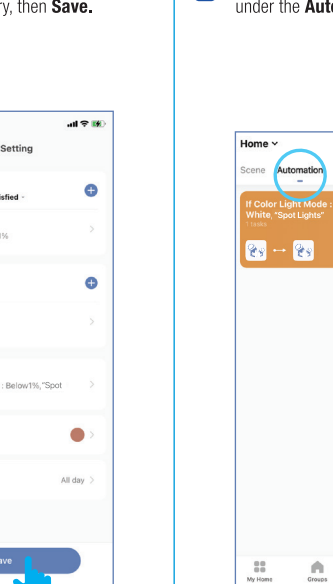
4 Set up a **task** you would like to automate.



5 Review your automations, edit them if necessary, then **Save**.



6 Your automation will appear under the **Automation** tab.



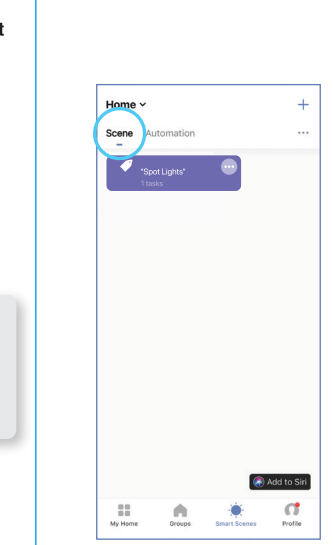
Enable Siri Shortcuts® (for use with iPhone)

1 From the **My Home** page, tap **Smart Scenes** at the bottom of screen.

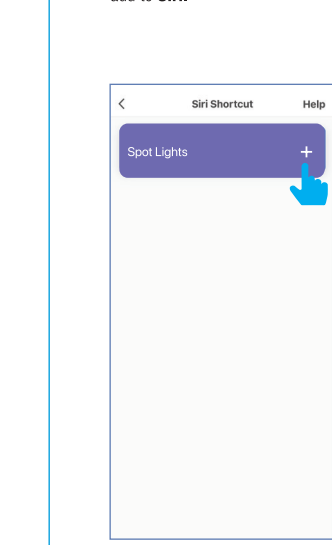


NOTE: Use Siri to activate a scene through voice control. If you have not created a scene, see the **Smart Scenes** section.

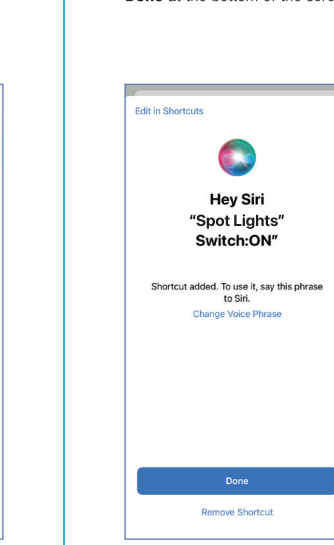
2 In the **Scene** tab, tap **Add to Siri** located at the bottom of the screen.



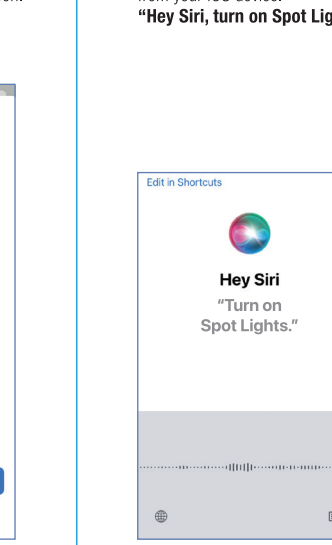
3 In the **Siri Shortcut** screen, tap on the action you would like to add to **Siri**.



4 On the **"Hey Siri"** screen, tap on the device name to edit it. Tap **Done** at the bottom of the screen.

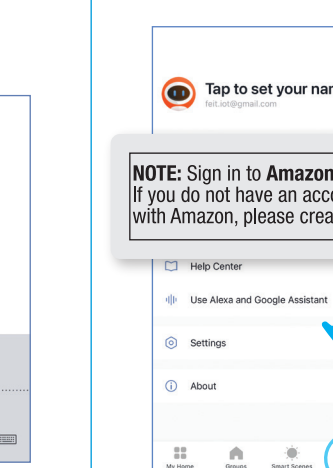


5 Now you can use the **"Hey Siri"** command to control this action from your iOS device. **"Hey Siri, turn on Spot Lights."**



CONNECT TO ALEXA

1 Tap on **Profile** at bottom right. Tap on **Use Alexa and Google Assistant**.

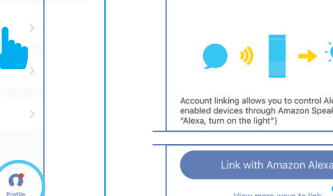


NOTE: Sign in to **Amazon Alexa**. If you do not have an account with Amazon, please create one.

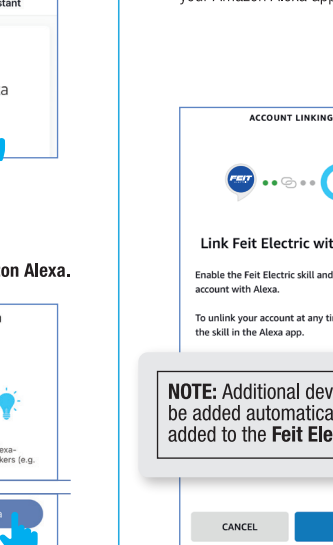
2 Tap on **Amazon Alexa**.



3 Tap on **Link with Amazon Alexa**.



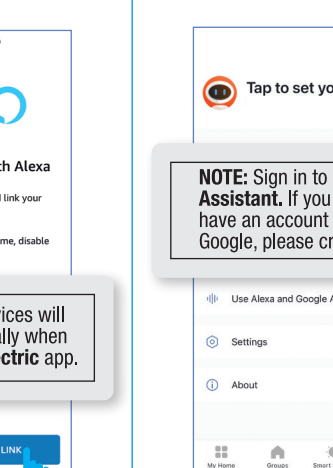
4 Tap on **Link**. You will be linked automatically to your Amazon Alexa app.



NOTE: Additional devices will be added automatically when added to the **Feit Electric** app.

CONNECT TO GOOGLE ASSISTANT

1 Tap on **Profile** bottom right. Tap on **Use Alexa and Google Assistant**.

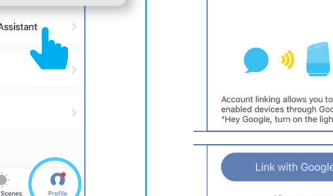


NOTE: Sign in to **Google Assistant**. If you do not have an account with Google, please create one.

2 Tap on **Google Assistant**.



3 Tap on **Link with Google Assistant**.



NOTE: Additional devices will be added automatically when added to the **Feit Electric** app.

Need Help?

Please refer to our online resources at www.feit.com/help to learn about more features & latest updates