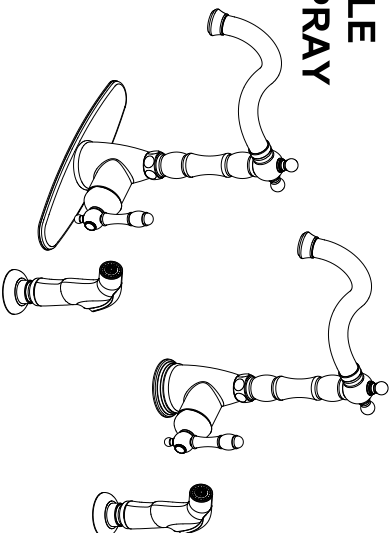


OAKMONT SINGLE HANDLE KITCHEN FAUCET WITH SPRAY

Models 523209, 523225
523217



Your new Design House faucet will give you years of trouble free performance. Thank you for choosing our product for your home. **Please read all of these instructions carefully before installing your new faucet.**

Helpful tools to install this faucet:

- basin wrench
- silicon sealer
- Teflon tape
- flashlight
- (2) crescent wrenches
- faucet supply tubes

IMPORTANT POINTS

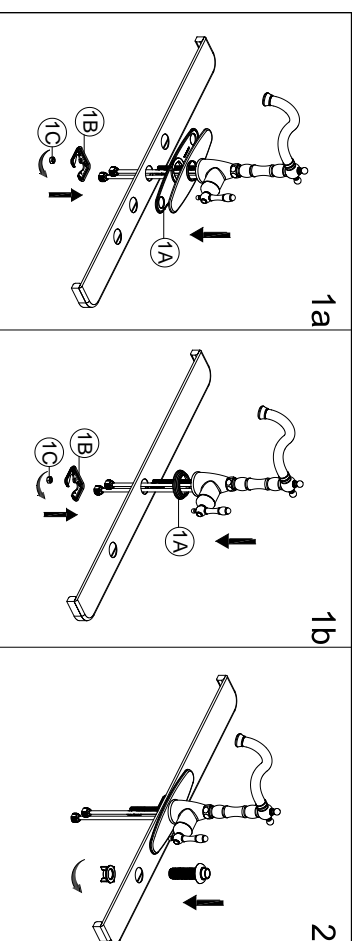
- When installing your new faucet, hand tighten the connector nuts, then use one wrench to anchor the fitting and a second wrench to tighten the nut one additional turn. Connections that are too tight will reduce the integrity of the system.
- Wrap threaded connections (except aerator thread in spout or where o-ring or rubber sealant are present) with Teflon tape available from your local hardware or plumbing supply store. Always wrap in a clockwise direction.

SAFETY TIPS

- **ALWAYS** protect your eyes with safety glasses.

INSTALLATION PROCEDURE

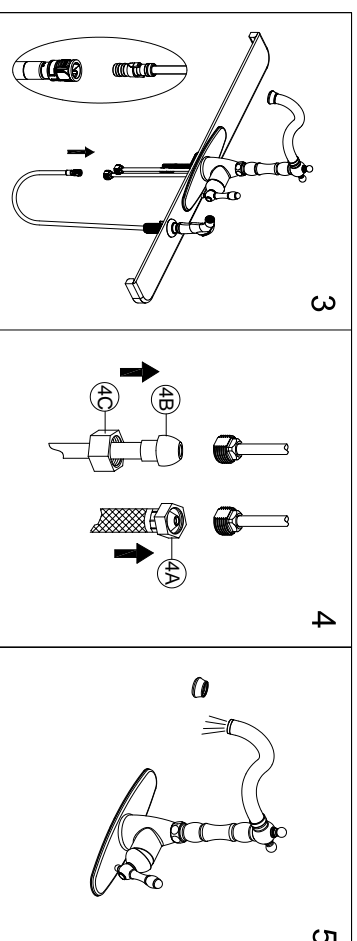
- 1a. Shut off water supply. Remove old faucet.
Escutcheon Installation (optional). Place gasket (1A) on bottom of escutcheon. Place faucet through mounting holes in sink. Secure faucet to sink using washer (1B) and nut (1C) provided.
- 1b. Flange Installation (optional). Place Flange (1A) on bottom of new faucet. Place faucet through mounting holes in sink. Secure faucet to sink using washer (1B) and nut (1C) provided.
2. Insert spray support through far right-hand hole on sink. Screw hold-down nut onto shank and hand tighten.



3. Insert spray hose down through support and sink. Attach spray hose to spray hose nipple underneath faucet body.

4. Make connections to water lines. Use 1/2" I.P.S. faucet connections (4A, not included) or use coupling nuts (4C, not included) with 3/8" O.D. ball-nose riser (4B, not included). Use wrenches to tighten connections. Do not overtighten.

5. Important: After installation is completed, remove aerator. Turn on water supply and allow both hot and cold water to run for at least one minute each. While water is running, check for leaks. Replace aerator.



TROUBLE SHOOTING

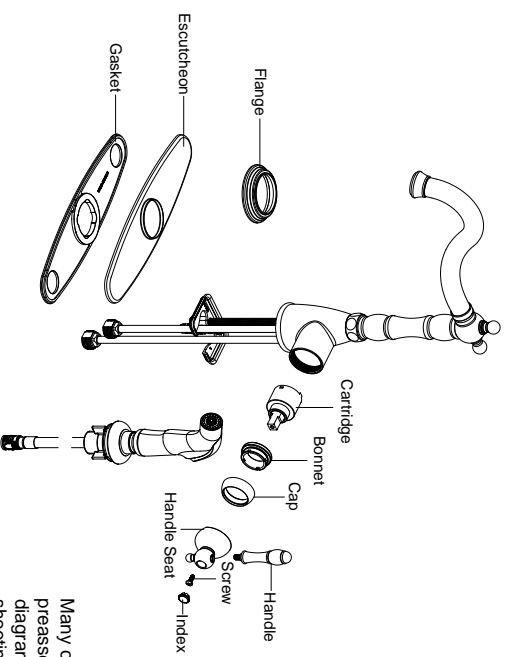
- o 523209 - Polished Chrome
- o 523225 - Satin Nickel
- o 523217 - Oil Rubbed Bronze

Problem :
Leaks from under handle and water does not completely shut off.

Cause :
Bonnet is loose or the cartridge is dirty or worn.

Action:

1. Remove index and unscrew the screw on the handle seat. Then remove the handle and handle seat.
2. Remove cap and bonnet. Lift cartridge off body and remove cartridge seal. Clean cartridge ports and cartridge seal. Place cartridge seal into cartridge ports.
3. Replace cap, bonnet, handle, tighten screw and install index.



Many of these parts come preassembled. This exploded diagram is to assist in trouble shooting.

MAINTENANCE

Your new Design House faucet is designed to give you years of trouble free performance. Avoid abrasive cleaners, steel wool and harsh chemicals that will dull the finish and void your warranty.

Brass finishes are polished, then protected with a lacquer coating to help prevent tarnishing. Clean these surfaces only with a damp, soft cloth.

Keep it looking like new by cleaning it periodically with a mild solution of soapy water. Rinse thoroughly and then dry with a soft cloth.

CONSUMER PROTECTION WARNING

Under the Safe Drinking Water Act, the U.S. Environmental Protection Agency restricts the amount of lead used in brass and solder. Your new faucet is made in strict compliance with all government standards. The materials used in the manufacture of this faucet are of industry standard quality and are similar to other plumbing products having brass fittings.

To reduce the amount of lead in your drinking water, allow the water to run for a moment before filling your glass and remember to always use cold water for drinking purposes.