

This document, including the design, configuration and mechanical features revealed herein are the sole, confidential and proprietary property of TRU Corporation. Reproduction or use thereof, in whole or part, is prohibited without the prior written consent of TRU Corporation.

| REV. | DESCRIPTION | DATE | APPROVED |
|------|----------------|----------|----------|
| - | ORIGINAL ISSUE | 03/09/12 | TRC |

ENGINEERING REQUIREMENTS:

ELECTRICAL
IMPEDANCE: 50 OHMS
FREQUENCY RANGE: DC TO 7.5 GHz
VOLTAGE RATING: 2,700 Vrms
PIM <-175 dBc

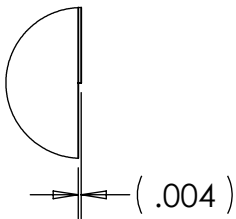
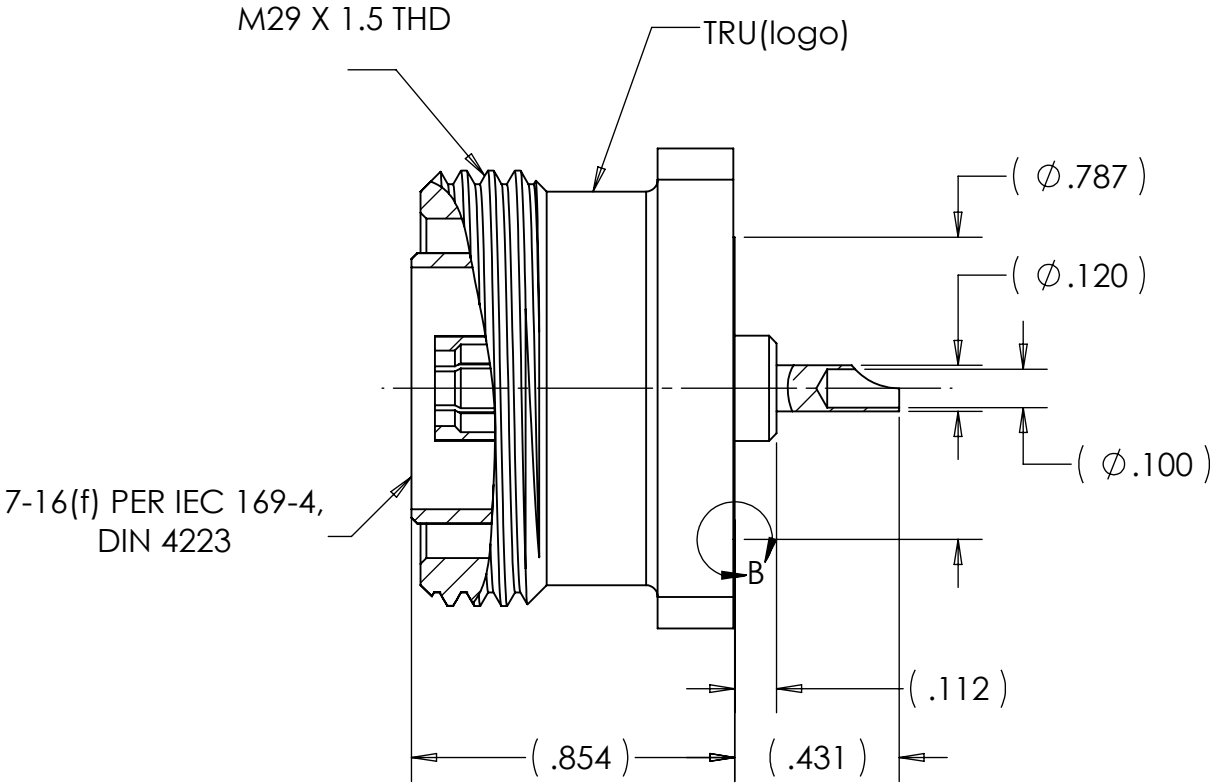
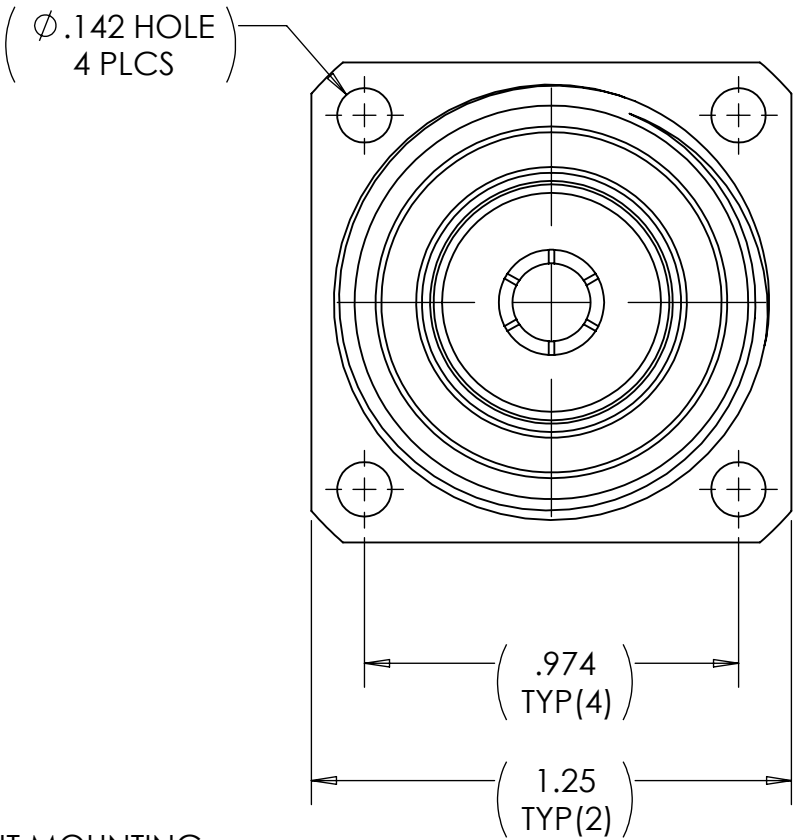
MECHANICAL
INTERFACE: PER IEC 169-4, DIN 47223
SOLID OUTER CONTACT

MATERIAL
INSULATOR: PTFE
FEMALE CONTACT: BERYLLIUM COPPER
OUTER CONTACT: BRASS
OTHER METAL PARTS: BRASS
CAP(NOT SHOWN): STANDARD VINYL (PVC)

FINISH
CONTACT: SILVER PLATING
BODY: TRIMETAL PLATING

ENVIRONMENTAL
OPERATING TEMPERATURE: -45°C to 120°C
RoHS COMPLIANT PER 2002/95/EC



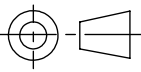
DESCRIPTION: 7-16 (f) RECEPTACLE, PANEL, FRONT MOUNTING



DETAIL B
SCALE 4 : 1

NOTES:

- UNLESS OTHERWISE SPECIFIED; ALL DIMENSIONS ARE REFERENCE ONLY.
- PRODUCT SUPPLIED WITH BLUE VINYL CAP (NOT SHOWN)

| | | | | |
|-----------------------|--|---|------------------------------|---|
| MATERIAL | DO NOT SCALE DRAWING | DRAWN TRC | DATE 02/24/12 |  TRU Corporation 245 Lynnfield St, Peabody, MA 01960 <small>EXPERIENCE. TRU INNOVATION.</small> |
| | | ENG APPR. TM | DATE 03/07/12 | |
| | | MFG APPR. NRM | DATE 03/09/12 | |
| | | OTHER APPR. | DATE | |
| COMMENTS: | UNLESS OTHERWISE SPECIFIED: DIMENSIONS ARE IN INCHES TOLERANCES: FRACTIONS: $\pm 1/64$.XX : $\pm .01$.XXX: $\pm .005$ ANGLES: $\pm 1/2^\circ$ MACHINED SURFACES:  | THIRD ANGLE PROJECTION  | | TITLE: CONNECTOR, COAXIAL 7-16(f) PANEL RECEPTACLE |
| | | SIZE B | DWG. NO. TRU-7002-0002-04 | REV - |
| surface area: sq inch | weight: lbs | CAGE CODE: 92180 | | SCALE: 2:1 SHEET 1 OF 1 |