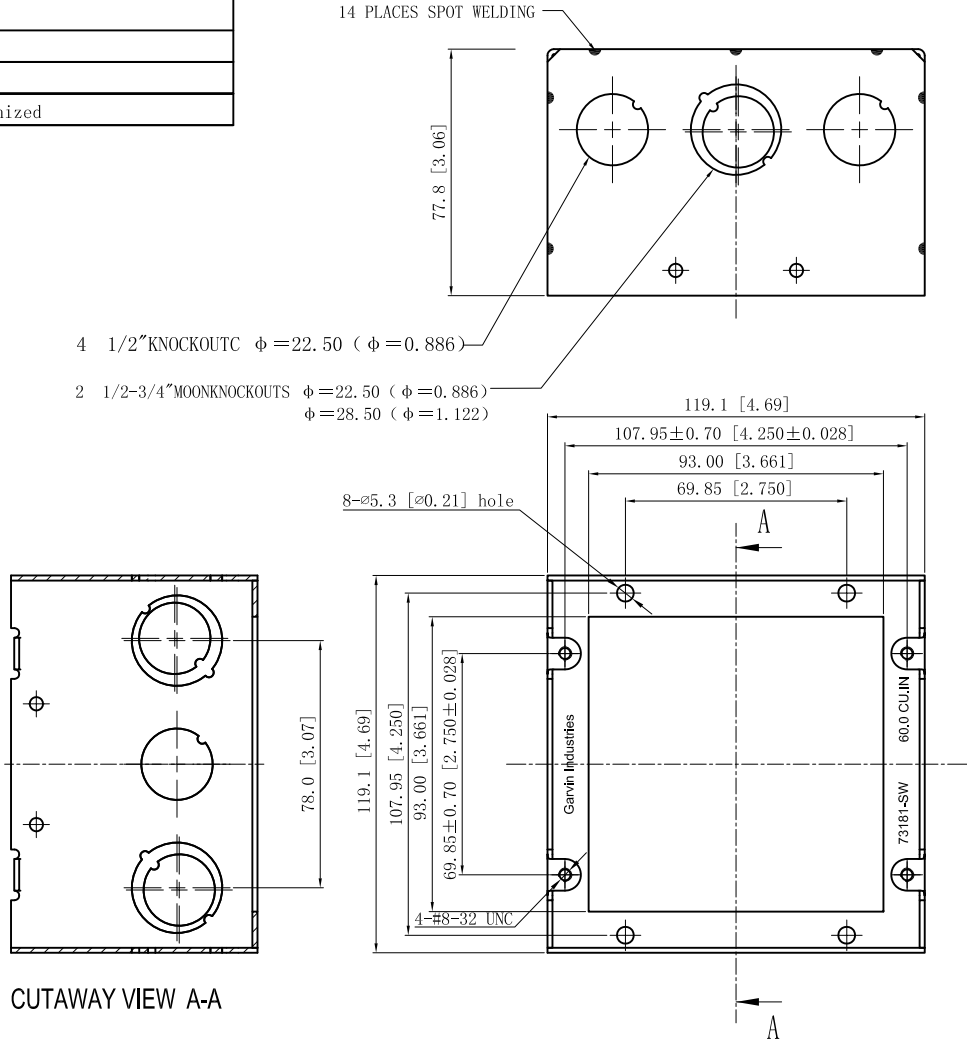
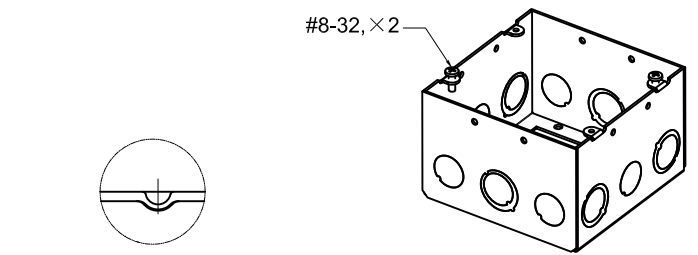


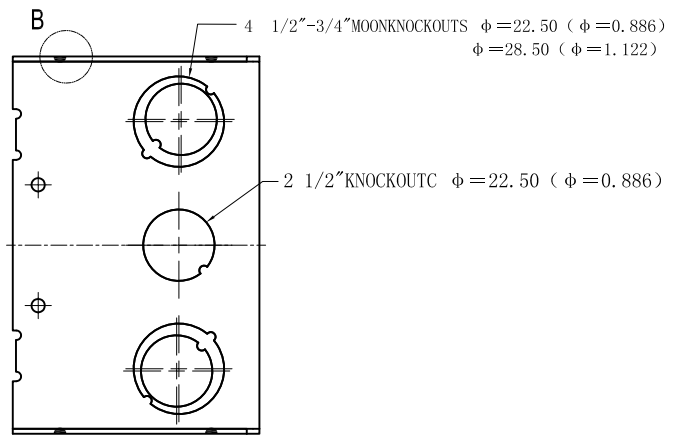
<b>SIDES</b>	<b>BOTTOM</b>
6 1/2" KNOCKOUTS	
6 1/2"-3/4" KNOCKOUTS	
2 PCS 8-32X1/2 Screws Installed	
Material: Steel-0.0625"-G60 Galvanized	



CUTAWAY VIEW A-A



WELDING STYLE DETAIL VIEW B



This data sheet is for reference only. GARVIN INDUSTRIES reserves the right to make changes to the design without prior notice.

DESCRIPTION
TRADE REFERENCE TERMS

STANDARD PACKING
25 PCS

<b>GARVIN INDUSTRIES</b>		
TITLE 4-11/16" SQUARE BOXES 3" DEEP		
SIZE A4	DWG NO. 73181-SW	REV
DATA SHEET		