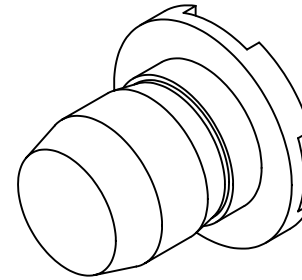


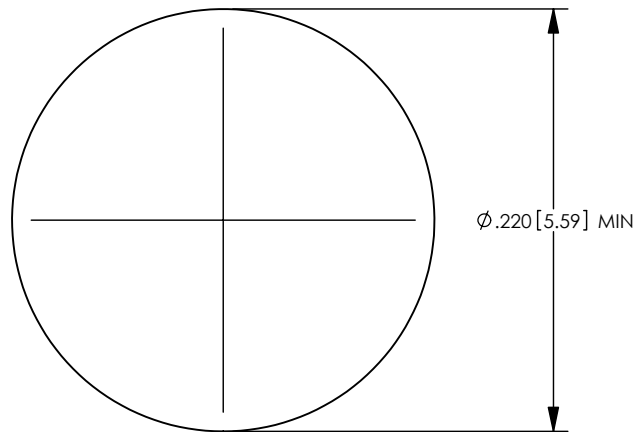
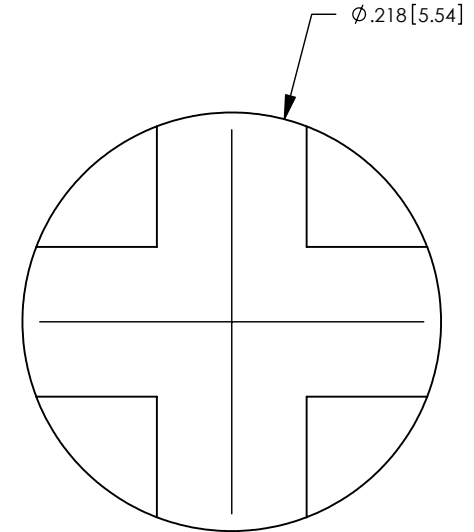
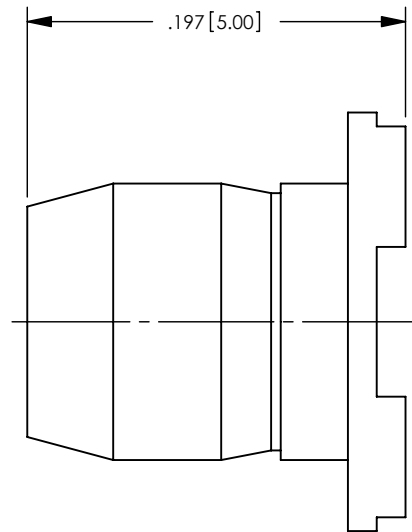
NOTES: UNLESS OTHERWISE SPECIFIED

1. PARTS PACKAGED IN TAPE AND REEL.
2. MATERIAL SPECIFICATIONS:  
BODY: BRASS PER ASTM B16
3. FINISH SPECIFICATIONS:  
BODY: .000030 MIN GOLD PER ASTM B488  
OVER .000080 MIN NICKEL PER AMS-QQN-290.

REV	DESCRIPTION	BY DATE	APPD
B	REVISED PER ER7306	CMB 04/14/08	CMB



ISOMETRIC VIEW  
SCALE: 6:1



RECOMMENDED PAD LAYOUT

WINCHESTER CATALOG No. 01347

PER ASME Y14.5M-1994 UNLESS OTHERWISE SPECIFIED: DIMENSIONS ARE IN INCHES [MM] TOLERANCES: DECIMAL: .XX ± .01 [0.3] .XXX ± .005 [0.13] .XXXX ± .XXXX ANGLES: ± 2° SCALE: 10:1				 Winchester Electronics Corporation 62 Barnes Industrial Road North Wallingford, Connecticut 06492	
<b>CUSTOMER DRAWING</b>			<b>POWER SNAP</b> SURFACE MOUNT TAPE AND REELED 40 AMP		
DRAWN KJT	DATE 11/08/02	APPROVED RAB	DATE 11/08/02	<b>A</b>	SD01347
APPROVED JEM	DATE 11/08/02	APPROVED JED	DATE 11/08/02		
				SHT 1 OF 1	REV D