

NOTES: UNLESS OTHERWISE SPECIFIED

1. MATERIAL SPECIFICATIONS:

BODY: BRASS PER ASTM B16.
 CONTACT: BERYLLIUM COPPER PER ASTM B196.
 INSULATOR: TEFLON PER ASTM D1710.
 CE INSULATOR: ULTEM 1000 OR LCP PER ZENITE 6130LxBK010.
 NUT: BRASS PER ASTM B16.

2. FINISH SPECIFICATIONS:

BODY: .000015 MIN GOLD PER ASTM B488 OVER .000080 MIN NICKEL PER AMS-QQ-N-290.
 CONTACT: .000030 MIN GOLD PER ASTM B488 OVER .000080 MIN NICKEL PER AMS-QQ-N-290.
 NUT: .000100 MIN NICKEL PER AMS-QQ-N-290 OVER COPPER FLASH PER ASTM B734.

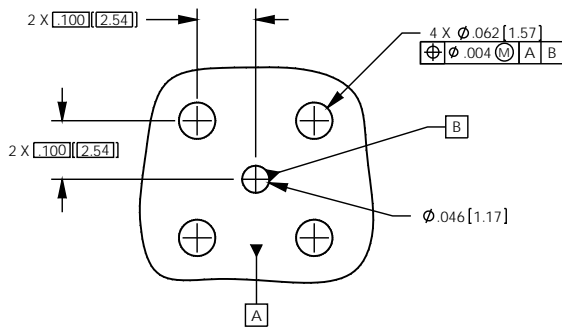
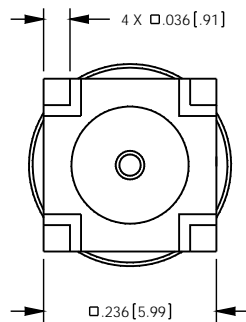
3. ELECTRICAL SPECIFICATIONS:

IMPEDANCE: 75 OHMS.
 FREQUENCY RANGE: DC-4.5GHz.
 RETURN LOSS (ON MID-LAYER OF 2.4mm PCB): <-15dB UP TO 3.0 GHz, <-10dB UP TO 4.5 GHz.

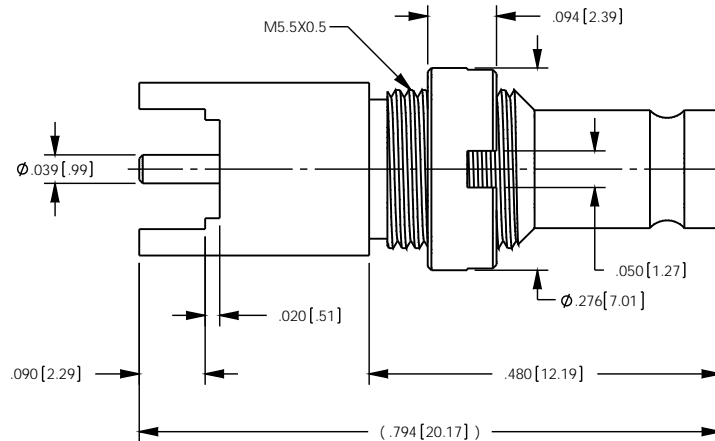
4. COMPLIANT TO SMPTE 424M (3G-SDI) STANDARD.

REV	DESCRIPTION	BY	APPD
F	ER047149	MAN	MS

P/N	DESCRIPTION	QTY
0347-060-00401H	SINGLE PACK	1
0347-060-00401HU	TRAY PACK	360



PCB LAYOUT



CATALOG P/N: 0347-060-00401H

PER ASME Y14.5M-1994 UNLESS OTHERWISE SPECIFIED: DIMENSIONS ARE IN INCHES (MM) TOLERANCES: DECIMAL: XX (X.X) ± .01 (0.3) .XXX (X.XXX) ± .005 (0.13) .XXXX (X.XXXX) ± .XXXX ANGLES: ± 2° SCALE: 5:1				by WINCHESTER Winchester Electronics Corporation 199 Park Road Extension, Suite 104 Middlebury, CT 06762		
CUSTOMER SALES DRAWING			THIRD ANGLE	DIN 1.0/2.3 75 OHM JACK PCB MOUNT (ROHS COMPLIANT)		
DRAWN	DATE	APPROVED	DATE	A	SD0347-060-00401H	SHIT OF REV 1 1 F
DW	04/23/08	Dcam	04/23/08			
APPROVED	DATE	APPROVED	DATE			
WPM	04/23/08	XXX	XX/XX/XX			