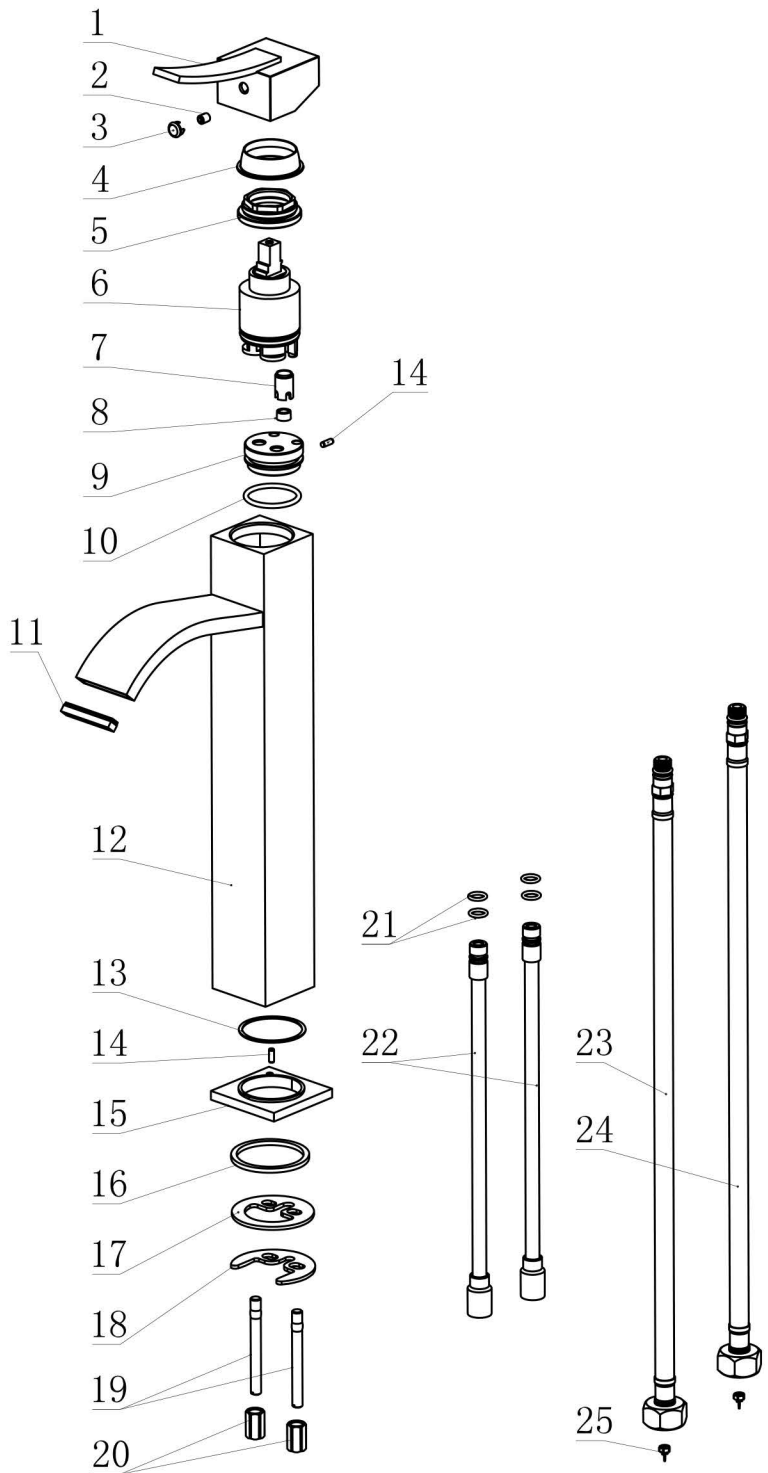


# AB1158



25	Filter	POM	2	70030046629
24	$\frac{9}{16}$ PEX flexible hose (450) (NSF)	Assembly	1	50042048426
23	$\frac{9}{16}$ PEX flexible hose (450) (NSF)	Assembly	1	50042048421
22	1021 inlet pipe A	Assembly	2	50040017901
21	7.65*1.78"O"ring (NSF)	NBR	4	70010027530
20	1360 nut (M6)	H59	2	50020002601
19	1360 fixing bolt B	Stainless steel	2	50020002201
18	1176 2-hole gasket	Q235	1	50020013201
17	1360 2-hole washer	NBR	1	70020002230
16	1050 washer	NBR	1	70020005830
15	1258 base	H59	1	50010056001
14	$\phi$ 3*8 pin	Stainless steel	2	40010060600
13	1258 Flat washer	NBR	1	70020020730
12	100101070-1158 mainbody	H65+ZCuZn40Pb2	1	10010107001
11	1258 aerator	POM	1	50050011231
10	28.24*2.62 "O"ring (NSF)	NBR	1	70010016330
9	1350 cartridge seat	H59-1	1	40060018152
8	$\phi$ 8 flow restrictor	Assembly	1	50050030323
7	1751 flow restrictor	POM	1	50050030252
6	35H cartridge	Assembly	1	20060003400
5	1298 cartridge nut (M37*1.25)	H59	1	40060075252
4	2218 decorative cover	ABS	1	50010078001
3	M5*6 screw	Stainless steel	1	50060000600
2	Red/blue button (HC)	ABS	1	50010008600
1	2258 handle	Assembly	1	20010009400
No.	Description&Specification	Material	Qty	Item no.