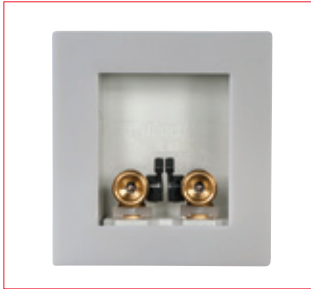


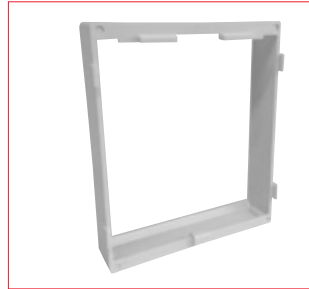
BOX COMPONENTS, FEATURES AND ACCESSORIES



Universal Faceplate
One box, one faceplate. It's just that simple. No more extra inventory or mis-matching. Included with every box.
Universal Faceplate: #37531



Faceplate Inserts*
MODA offers three inserts that snap in to the standard faceplate - partial coverage, full coverage and louvered.
Solid Faceplate: #37532
Semi-Cover Faceplate: #37533
Louvered Faceplate: #37534



Box Extension
Oatey's box extension fits any MODA box, supply or drain, and is stackable if additional extensions are required.
Box Extension: #38565



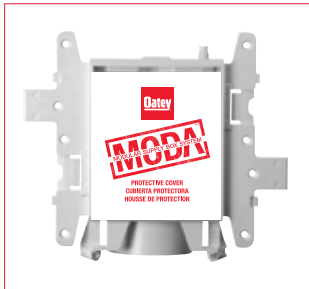
Sure-Vent® Adapter*
Quarter-turn adapter with gasket maintains air-tight seal, and can be retrofitted on any drain box. *Does not include Sure-Vent® AAV.
Adapter: #37537



Center Support*
Provides added rigidity in center and metal stud installations. Fits into metal stud cavity. Included with all **double** boxes.
Center support: #37539



Tool-Free Test Plug
Oatey's popular tool-free, quarter-turn mechanical test plug cap with gasket can't fall down into the drain line. Extras can be ordered as required. Included with every drain box.
Test Plug: #38576



Protective Sticker Cover
Protects box from paint and drywall debris. Included with every box.
Sticker: #37529



Side Brackets*
Broad, sturdy brackets just clip on, yet provide solid support to withstand rigorous drywall installations. Extras can be ordered as required. Included with every box.
Side Bracket: #37535



Secondary Drainage Funnel*
Installs with a quarter-turn, creating a 1" air gap and providing dual drain capabilities. Recommended for low volume (3 gpm or less) discharge appliances. When used with MODA® Auxiliary drain box and inlet fitting adapter, rated for up to 10 gpm discharge.
Secondary Drainage Funnel: #37536

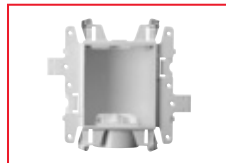


Metal Side Bracket & L-Shape Bracket
MODA Fire-Rated supply boxes come with metal brackets to provide support under extreme temperatures.
Metal Side Bracket: #37453
L-Shape Brackets: #37454

MODA® MODULAR SUPPLY BOX SYSTEM

MODA™ COMPONENTS + VALVES

MODA™ Accessories				
PART NO.	VALVE APPLICATION		QTY	UPC
37531	MODA Faceplate		12	038753375311
37532	MODA Faceplate Insert - Solid		12	038753375328
37533	MODA Faceplate Insert - Semi-Cover		12	038753375335
37534	MODA Faceplate Insert - Louvered		12	038753375342
37535	MODA Plastic Bracket		12	038753375359
37453	MODA FR Metal Side Bracket	🔥	6	038753374536
37454	MODA FR L-Shape Bracket	🔥	12	038753374543
38576	DWV Quarter-Turn Test Plug		12	038753385761
37536	MODA Secondary Drainage Funnel		12	038753375366
35971	Condensate Test Plug		6	038753359717
37537	MODA Sure-Vent Adapter		12	038753375373
37538	MODA Valve Clip Cover		12	038753375380
37539	MODA Center Support		12	038753375397
37529	MODA Debris Cover Sticker		12	038753375298
37565	MODA Box Extension		6	038753375656



PLAIN BOXES*

Plain Boxes

PART NO.	DESCRIPTION	PACK TYPE	QTY	UPC
37971	1 Valve Port	Standard	12	038753379715
37972	2 Valve Port	Standard	12	038753379722
37970	Standard Drain (supplied with Test Cap)	Standard	12	038753379708
37450	Standard Drain (supplied with Test Cap)	Standard	1	038753374505
37973	Drain + Aux Port	Standard	12	038753379739
37974	Drain + 2 Aux Port	Standard	12	038753379746

*All plain boxes come with faceplate

MODA™ Valves				
PART NO.	DESCRIPTION		QTY	UPC
37500	Valve Top + Clip, WMOB, No Hammer, Grey Handle, Cold		1	038753375007
37501	Valve Top + Clip, WMOB, No Hammer, Grey Handle, Hot		1	038753375014
37502	Valve Top + Clip, WMOB, Hammer, Grey Handle, Cold		1	038753375021
37503	Valve Top + Clip, WMOB, Hammer, Grey Handle, Hot		1	038753375038
37504	Valve Top + Clip, Utility, No Hammer, Grey Handle, Cold		1	038753375045
37505	Valve Top + Clip, Utility, No Hammer, Grey Handle, Hot		1	038753375052
37506	Valve Top + Clip, Utility, Hammer, Grey Handle, Cold		1	038753375069
37507	Valve Top + Clip, Utility Hammer, Grey Handle, Hot		1	038753375076
37508	Valve Top + Clip, IMOB, No Hammer		1	038753375083
37509	Valve Top + Clip, IMOB, Hammer		1	038753375090
37510	1/2" Copper Tailpiece Adapter Male		1	038753375106
37511	1/2" Brass F1807 Tailpiece Adapter		1	038753375113
37512	1/2" Brass F1960 Tailpiece Adapter		1	038753375120
37515	1/2" CPVC Tailpiece Adapter Female		1	038753375151
37516	3/4" Copper Tailpiece Adapter Male		1	038753375168
37517	3/4" Brass F1807 Tailpiece Adapter		1	038753375175
37518	3/4" Brass F1960 Tailpiece Adapter		1	038753375182
38294	Hot/Cold Valve Temperature Indicator Clips (12 Red, 12 Blue)		24	038753392943