



ELECTRIC PEDICURE DEVICE

TB-1536

INSTRUCTION MANUAL

Safety Instructions:

To ensure proper operation of this appliance, please read this instruction manual carefully before using the appliance and keep it for further reference.

⚠ WARNING

- The following persons should not use this appliance: persons with skin allergies; persons with wounds, inflammation or skin conditions on the area of use; persons with swollen skin or severe skin diseases on the area of use.
- Verify the appliance before you start using it. Do not use this appliance if it has any damage.
- If you feel any discomfort while using the appliance, immediately stop using it and consult a doctor.
- Do not use the appliance while it's charging.
- Do not attempt to modify, disassemble, or repair the appliance by yourself to avoid accidents.

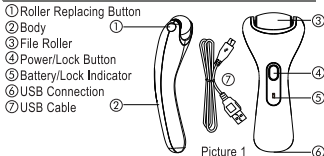
⚠ CAUTION

- Do not share the same appliance with others.
- Keep the appliance out of reach of children.
- Regularly clean the appliance to extend its lifetime.
- This appliance has a lithium battery. Do not place or store the appliance for long periods under a hot or humid environment. If you do not intend to use the appliance for a long time, store it after it is fully charged.

Product Specifications:

- Name: Electric Pedicure Device
- Model NO.: TB-1536
- Input: 5V 1520mA
- Power: 3.7V 7.4W
- Type of Battery: Li-polymer 3.7V 1050mAh
- Executive Standard: Q/XMMJ1018-2016

Product Description:



Picture 1

Instructions:

To ensure the correct operation of this appliance, please read the instructions carefully before use.

※ Charging the appliance takes approximately 3.5 hours. When the battery is fully charged, the appliance can be used continuously for about 1.5 hours.

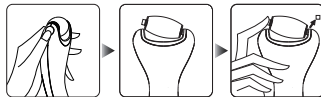
※ This appliance has a 5 min smart auto-timer.

1. Remove/Install the File Roller

Remove: Hold the appliance with one hand, with the other hand press the Roller Replacing Button and remove the File Roller.

Install: Hold the appliance with one hand, with the other hand hold the File Roller, align the square-shaped connection pin on the File Roller with the square-shaped Connection point on the appliance, and press the retractable round connection pin until it connects with the round connection point on the appliance.

Note: When installing the File Roller, make sure you connect the square connection pin with the square connection point and the retractable round connection pin with the round connection point (picture 2).



Picture 2

2. Lock Function

To lock: With the appliance turned off, long-press the power button for around 3 seconds, the Lock Indicator lights up interchanging from red to blue light 4 times. At this point, the appliance is locked and cannot be turned on.

To unlock: Long-press the power button for around 3 seconds, the Lock Indicator lights up interchanging from red to blue light 4 times, then quickly short press the power button to turn the appliance on.

3. File roller stop rotation, self-recovery

Locked-rotor and stop rotation: When the frictional resistance of File Roller rotation exceeds a certain value, the appliance automatically stops working to protect internal gears from being worn or from slipping.

Self-recovery: To remove the friction resistance, wait for 1 second, the File Roller can automatically resume rotation.

3. Using the Appliance

1) Press the Power Button to turn the appliance on. Place the File Roller on the area you need to exfoliate and move it slowly over the skin (picture 3).



Picture 3

2) After using the appliance, press the Power Button to turn it off. Wipe off any remaining residues from the feet.

Cleaning & Maintenance:

- 1) Make sure the appliance is turned off before you start cleaning it.
- 2) Do not immerse the appliance in water. The File Roller can be clean separately.
- 3) Clean the surface of the appliance with a clean slightly wet cloth and dry it with a soft cloth.
- 4) Do not use any lubricant, detergent, polishing agents or air freshener on this appliance.
- 5) The File Roller can be removed and washed with water. Do not use alcohol, steel wool, abrasive cleansers or corrosive liquids to clean the File Roller or the appliance body.

Service:

1. Eco-friendly Tips

This appliance has a lithium battery, Batteries contain substances harmful to our environment, please do not dispose of the appliance with the normal household waste, instead, hand it over to an official recycling point.

2. Troubles hooting:

Problem	Possible Cause	Solution
File Roller does not work when the Power Button is pressed.	The File Roller may be installed in the opposite direction.	Connect the square connection pin with the square connection point and the retractable round connection pin with the round connection point.
The appliance does not work when the Power Button is pressed.	The battery is running low or out of power.	Recharge the appliance.
The results of using the appliance are reduced.	The File Roller is damaged or worn out.	Replace the head according to the Instruction Manual.
	The File Roller is installed incorrectly.	
Other problems.		Contact your local retailer.

Note: If the appliance still does not work properly after using the above solutions, please stop using the appliance and contact your local retailer.

3. After-Sales Service

Please visit our website www.touchbeauty.com or contact our customer service team customer@touchbeauty.com if you need to learn about our products or if you need any information. You can also contact an affiliate dealer in your country.

MANUFACTURER: TOUCHBEAUTY BEAUTY & HEALTH (SHENZHEN) CO., LTD

ADDRESS: 601 & 602, Block F5, TCL International E-City, 1001 Zhongshanyuan Road, Shuguang Community, Xili Subdistrict, Nanshan District, Shenzhen, China.