

Z5R8852X

5MP Day & Night Auto Focus IR IP Bullet Camera



Auto Focus, 5MP High Resolution

The Z5 series cameras with auto-zoom lens can effectively and precisely capture the details of the object, which is more advantageous in applications that require magnified view.

H.265 encoding also saves bandwidth to stream the video in a smart manner.

Features

- 5 megapixel CMOS image sensor
- 5MP H.265/HEVC and H.264/AVC high-performance video compression
- Simultaneous streaming of H.265 and H.264 encoded streams
- Auto focus with zoom / focus motorized lens
- 3D noise reduction (MCTF)
- 2D WDR function
- DWDR function up to 100dB
- High efficiency IR LED, radiant distance up to 30m
- Day & Night (IR cut removable)
- Digital I/O : 1 in, 1 out
- ONVIF Profile S supported
- IP67 rain and dust resistant
- IK10 Vandal resistant approve

Video Performance	
Minimum Illumination	Color : 0.05 Lux at F1.6 ; B/W : 0.01 Lux at F1.6 ; 0 Lux with IR LED ON
Lens / Night Vision (Infrared LED)	
Focal Length	2.8~12mm (zoom / focus motorized)
Iris / Aperture	F 1.6(W) - F 3.3(T)
Iris Control	DC-IRIS
Angle of View (H)	90.4° (W) – 29.8° (T)
Angle of View (V)	65.5° (W) – 22.1° (T)
Angle of View (D)	119.2°(W) – 37.0° (T)
Peak Wavelength	850nm
Beam Spread	60°
Radiant Distance	30M
Sensor	
Pick Up Element	1/2.7" CMOS image sensor
Effective Pixels	2608(H) X 1960(V) = 5,111,680 (Pixels)
Light Sensor	Yes
Certifications	
CE	Yes, EMI Class A
FCC	Yes, EMI Class A
IP Rating	IP67
Vandal Resistant Rating	IK10
PC Requirements	
CPU	Intel® Core™ i7 or higher grade
OS	Windows 7 or above
RAM	8GB or above, Dedicated Graphics Card
Web Browser	Microsoft® Internet Explorer® 9 or above
Input / Output	
Alarm Input / Output	Digital 1 input (TTL, +3 – 5VDC) / 1 Output (MOS Relay contact N.O., Load. max. 40VDC,450mW/300mA,450mW), Terminal block
Video Streaming	
Video Compression	H.265/HEVC Main Profile, H.264 Main Profile, Motion JPEG
Video Streaming	RTSP/UDP, RTSP/TCP, configurable streams in H.265 and H.264 and Motion JPEG, configurable frame rate and bandwidth
Number of Streams	3
Video Bitrate	128Kbps - 8192Kbps, Frame rate and bit rate controllable on-the-fly, VBR / CBR / GOP supported, H.264/H.265

Network Security	
Encryption	Base64 HTTP encryption, Digest HTTP authentication, RTSP Authentication
Authentication	Digest HTTP authentication, RTSP authentication, DDNS via HTTPS
Access	Multiple user access levels with password protection
User accounts	7 user accounts available
Video Resolutions (H x V)	
Resolution	5MP(2592 × 1920), 4MP(2304 × 1728), 3MP(2304x1280), 2MP(1920 × 1080), 1.3MP(1280 × 960), 1MP(1280 × 720), 720 × 576, 720 × 480, 720 × 384, VGA(640 × 480), CIF(352 × 256)
Maximum Frame Rate	2592x1920 / 20 fps
Video Functions	
Scanning System	Progressive Scan
Infrared Cut Filter	Auto / Day (Color) / Night (Mono) / Schedule
White Balance	Auto / Manual
Back Light Compensation	Off / On
Electrical Shutter	1/30(1/25)s – 1/20000s
Sense Up	Off / x2 / x4
Sense Up+	Yes
Auto Gain Control	36 dB Variable Gain
S/N Ratio	More than 48dB (AGC off)
3D Noise Reduction	Off / 1 – 32 Selectable
2D WDR	Off / Auto / x2 / x3 / x4
High Dynamic Range	Up to 100dB (by DWDR mode)
Privacy Masking	Off / On (4 zones) color mask configurable
Image Effects	Brightness, Contrast, Hue, Saturation, Sharpness, Mirror, Flip
Auto Focus	One Push
EV (Exposure Value)	Adjustable

Integration	
Mobile Application	Integrated to LILIN mobile app (LILIN Viewer) iPhone, iPad, Android support
Video Management	ONVIF Profile S / LILIN Navigator Enterprise 2.0 support, Third party VMS through LILIN HTTP API
SD Card Recording	Support (128GB) Micro SD/SDHC/SDXC card for circular recording (card is not included)
Maintenance	Firmware update via HTTP and IP Scan; Firmware available at website
Event Triggers	Motion / Alarm / Network lost detection / Global Counter / Virtual Input / Metadata
Event actions	FTP / SMTP / HTTP POST / SD Card / SAMBA / Alarm / Global Counter / Virtual Input / Push service notification
Languages	English, Traditional Chinese, Simplified Chinese, Spanish, Italian, Turkish, Russian, Korean, French, Arabic, Hungarian, Japanese
Network	
Ethernet	10/100 Mbps Base-T, RJ-45
OSD	Text overlay for date, time, and camera name (position configurable text overlay for date, time, camera name)
CPU, Memory	SoC ARM Cortex-A7 Single Core 800MHz, Embedded 128MB DDR3, 128MB flash memory
OS	Embedded Linux 3.10
Network Protocols	IIPv4, TCP, UDP, HTTP, HTTPS, SMTP, NTP, DDNS, FTP, ARP, DHCP, DNS, RTSP, RTCP, Telnet, ICMP, IGMP, ONVIF Profile S, SSL/TLS
Max number of online users	7 simultaneous users
Video Display	LILIN Universal ActiveX
Log	Event & operation log & IVS event log
Power and Environment	
Starting Temperature	-10°C – +50°C (14°F – 122°F)
Operating Temperature	-30°C – +50°C (-22°F – 122°F)
Storage Temperature	-25°C – +60°C (-13°F – 140°F)
Humidity	0% – 90% RH
Power Supply	DC12V ±10% / PoE (IEEE 802.3af compliant)
Power Consumption	DC12V, 7.5W / PoE, 10W
Mechanical	
Dimension	74(W) × 69(H) × 189(D) mm
Weight	575g
Casing Material	Aluminum alloy
Window	Ø61 Heat Resistant Glass

Dimensions

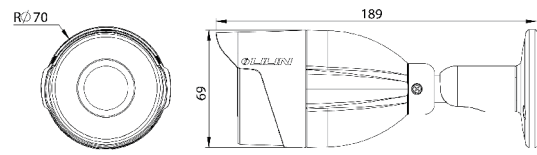
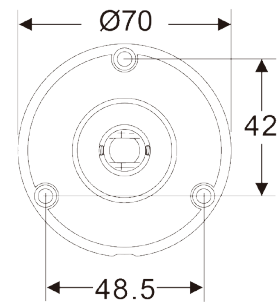


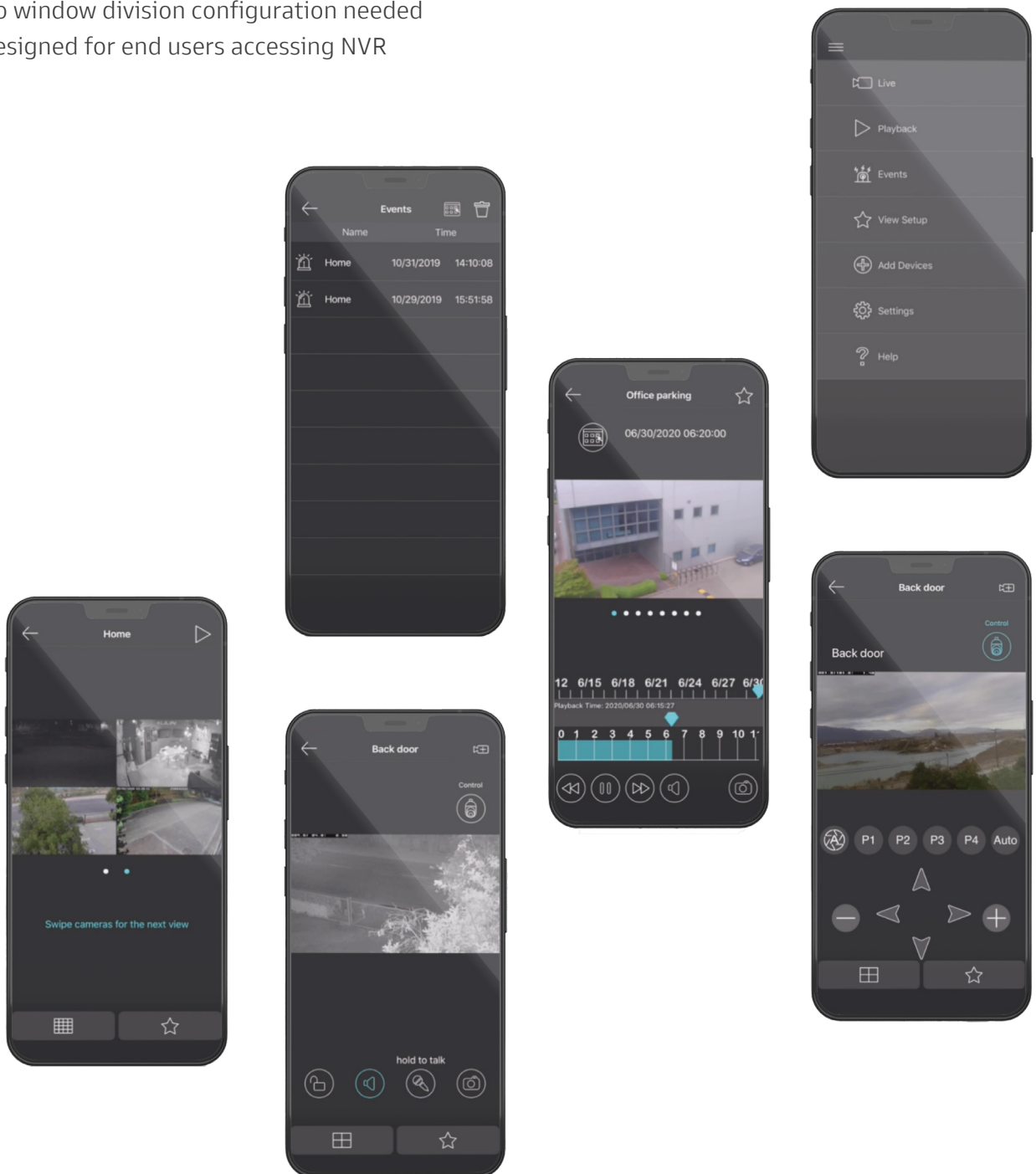
Diagram of mounting holes



Easy access to NVRs

LILINHome App is designed for accessing live video and recording for LILIN NAVs VMS, NVRs, and cameras. Two-way audio, push notification, digital output control, and PTZ control are supported by the App. Easy configuration for LILIN P2P NVR is supported, no complicate camera settings. Secured credentials stored and cloud configurations are also supported.

- No cameras of NVRs configuration needed
- No window division configuration needed
- Designed for end users accessing NVR





Totally NAV Compatible

Navigator 3.0 Corporate version supports multiple input sources, each station can record and manage up to 108 channels and support alarm trigger and output function. It can support POS system, ANPR, Face Recognition, AIDA recognition. It can provide complete remote software to perform multi-site monitoring and statistics display, which can be used for various applications with LILIN IO box. It provides a complete TV wall and eMap alarm display. And a very reliable disconnection recovery and backup mechanism.

- Manage and record 108 IP cameras per station
- User can decide to record main stream or substream
- Integrated alarm management for various alarm outputs
- User-friendly UI and TV Wall application are supported
- Compatible with third party ONVIF Profile S IP camera
- User account customizable
- Support failover up to 36 channel per server, can monitor up to 8 recording server
- Several alarm input with logical control and support schedule management
- Support 4K UHD camera, 120FPS camera
- Support corridor mode and increase the monitoring area in the vertical narrow environment

*Specifications are subject to change without notice.
Please contact our regional sales for latest information



Merit LILIN Ent. Co., Ltd.

With over 40 years of experience in the surveillance industry, LILIN is the first ONVIF-compliant camera manufacturer and expert with leading achievements in video transmission and analysis technology. LILIN integrates AIoT applications, edge computing, and security equipment into a total solution for cross-industry applications in industrial and commercial environments such as construction, transportation, shipping, ports, military, retail, office premises, schools, banks, entertainment venues, and factories, as well as adapting product capabilities to meet public facility needs in line with government strategies.

LILIN is committed to providing highly reliable products and services in the field of video integration and event analysis, such as license plate recognition, face recognition, advanced electronic fencing, vehicle, and pedestrian flow detection, social distance detection, mask detection, lost and found, and site safety applications.

Headquarters

No. 20, Wugong 6th Road, New Taipei Industrial Park, Wugu District, New Taipei City 248
inquiry@meritlilin.com
www.meritlilin.com

TAIPEI | HONGKONG | MALAYSIA | AUSTRALIA | UNITED STATES | UNITED KINGDOM



Know More



Contact Us