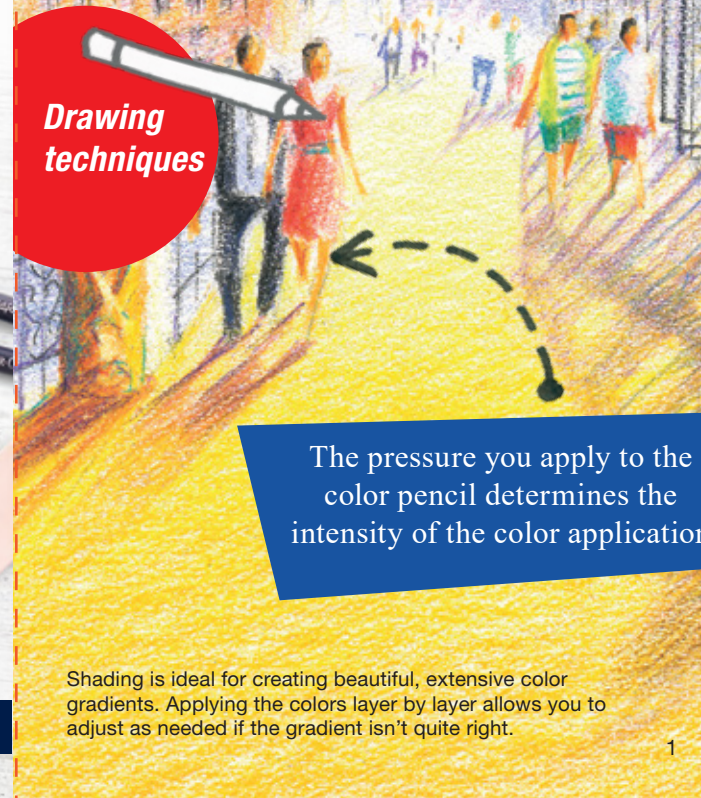


Color Pencil Art Set



Creative Studio

Drawing techniques



The pressure you apply to the color pencil determines the intensity of the color application

Shading is ideal for creating beautiful, extensive color gradients. Applying the colors layer by layer allows you to adjust as needed if the gradient isn't quite right.

1

Hold the pencil at a flat angle

This position ensures that the entire lead surface is used, resulting in a homogeneous color application.

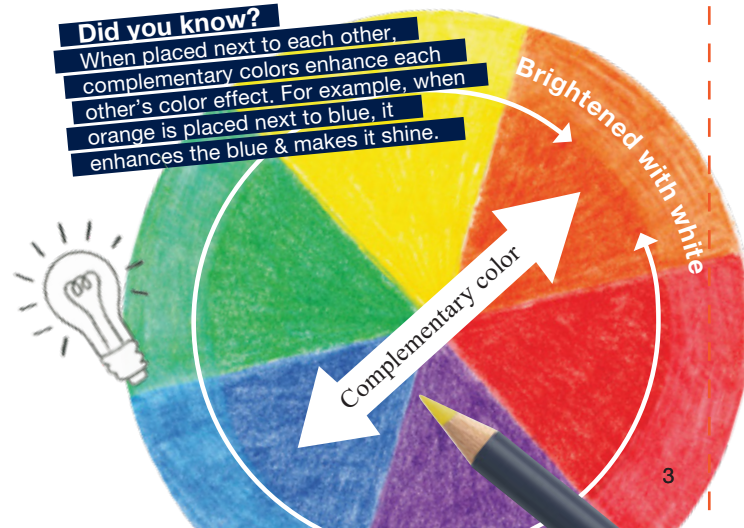
2

Darken +Brighten

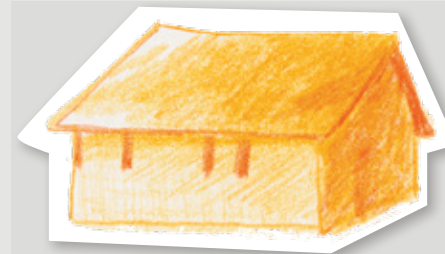
Use complementary colors to darken a color and create shadows. On the color wheel, the complementary colors are opposite of each other.

Did you know?

When placed next to each other, complementary colors enhance each other's color effect. For example, when orange is placed next to blue, it enhances the blue & makes it shine.



3



In the example shown, blue and orange are opposite each other. When you layer these two colors, you get a shade of grey. You can vary the shade of grey by adjusting the ratio of the two colors.

Darkened with blue



4

Yellow
on
blue

Red
on
blue

Blue
on
yellow

Orange
on
green

Blue
on
pink

Try this – instead of selecting a green color pencil, combine the blue and yellow pencils together. The diversity of the Goldfaber color pencils will enhance your drawing, creating differentiated tones and shades of green.

The order in which the colors are layered is important. For example, yellow layered on blue will result in a different shade than blue on yellow.



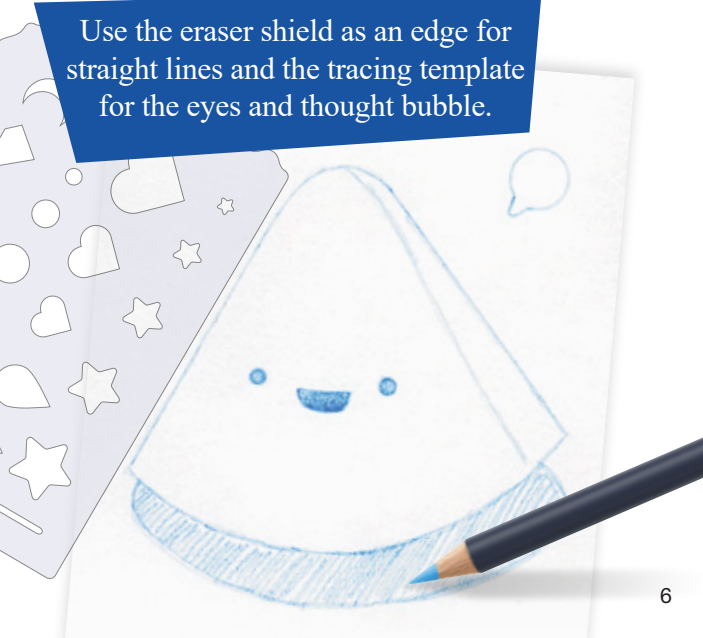
Good to know

Bright colors, such as yellow, are more transparent than dark colors. Therefore, bright colors do not cover as well as dark colors.

5

Use the blue pencil to lightly sketch the outline of the watermelon, as shown below. Color pencil artists like to sketch their design in blue or red pencil instead of graphite because it won't smear once you start shading over the top.

Use the eraser shield as an edge for straight lines and the tracing template for the eyes and thought bubble.



6

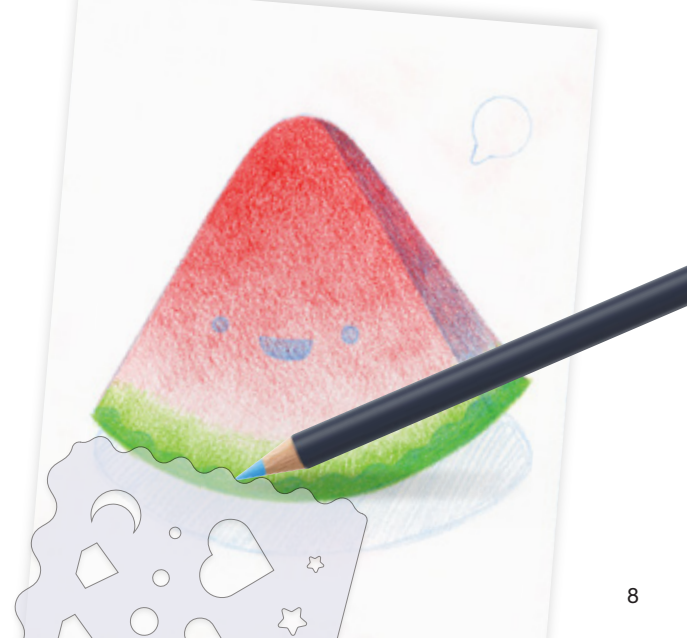
Gently shade a gradient with the red color pencil moving from an intense red to a lighter shade, from top to bottom. Create another gradient using the green color and shade in the opposite direction from bottom to top.



7

To add depth to the watermelon, use the blue pencil to shade the right side of the watermelon, as shown below.

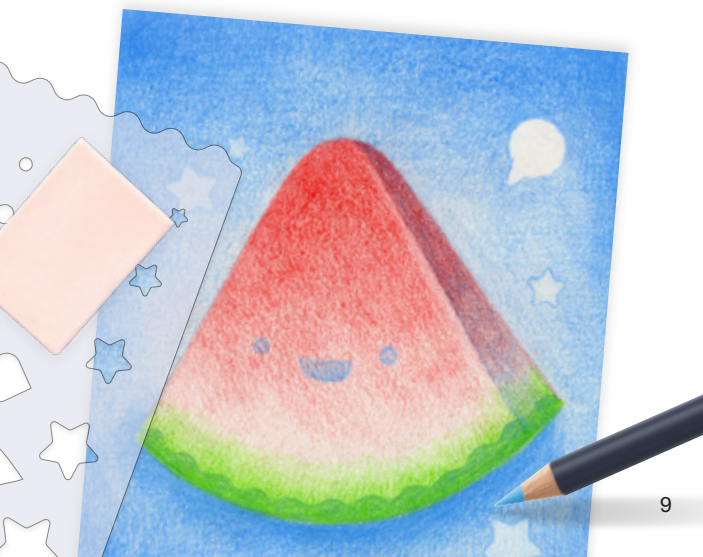
Use the Eraser Shield to add a wavy line to the watermelon rind. Shade down to the bottom of the melon.



8

Create a background using the blue pencil. Shade a lighter blue behind the watermelon and a darker blue fading to the corners of your paper. Apply more pressure with the pencil when shading under the watermelon to create a shadow.

Use the eraser with the eraser shield to create stars around the watermelon. After erasing, outline the shape in the eraser shield to make it stand out. Erase along the edge of the watermelon to add a highlight.



9

Use the purple color to add final details to the watermelon, including seeds and filling in the eyes and mouth.

Use the red color to add rosy cheeks. Fill in the thought bubble with a heart. Trace the heart using the Eraser Shield.



10

Pencil Extender - Use this tool when your pencils get too short. It extends the life of your pencils and increases comfort.



Adaptable to most pencils, simply insert your pencil by adjusting the metal ring to ensure a firm grip.



Pencil Grip - Guides the hand into an ergonomic position, improving comfort and reducing hand fatigue.

* Push firmly to insert the pencil.

Need Help?

Call: 800-311-8684

Email: Consumer@FaberCastell.com

Chat or view FAQs & INFO online:
www.fabercastell.com

770814

Color Pencil Art Set
© Faber-Castell USA, Inc.
Cleveland, Ohio 44125

