



INFLATABLE COLD PLUNGE TUB USER GUIDE

MODELS

CP-IFTUB

CP-IFBAR



DON'T WAIT! REGISTER NOW!

Register your product within 90 days to ensure your sauna is recognized as an official purchase and is eligible for warranty coverage.

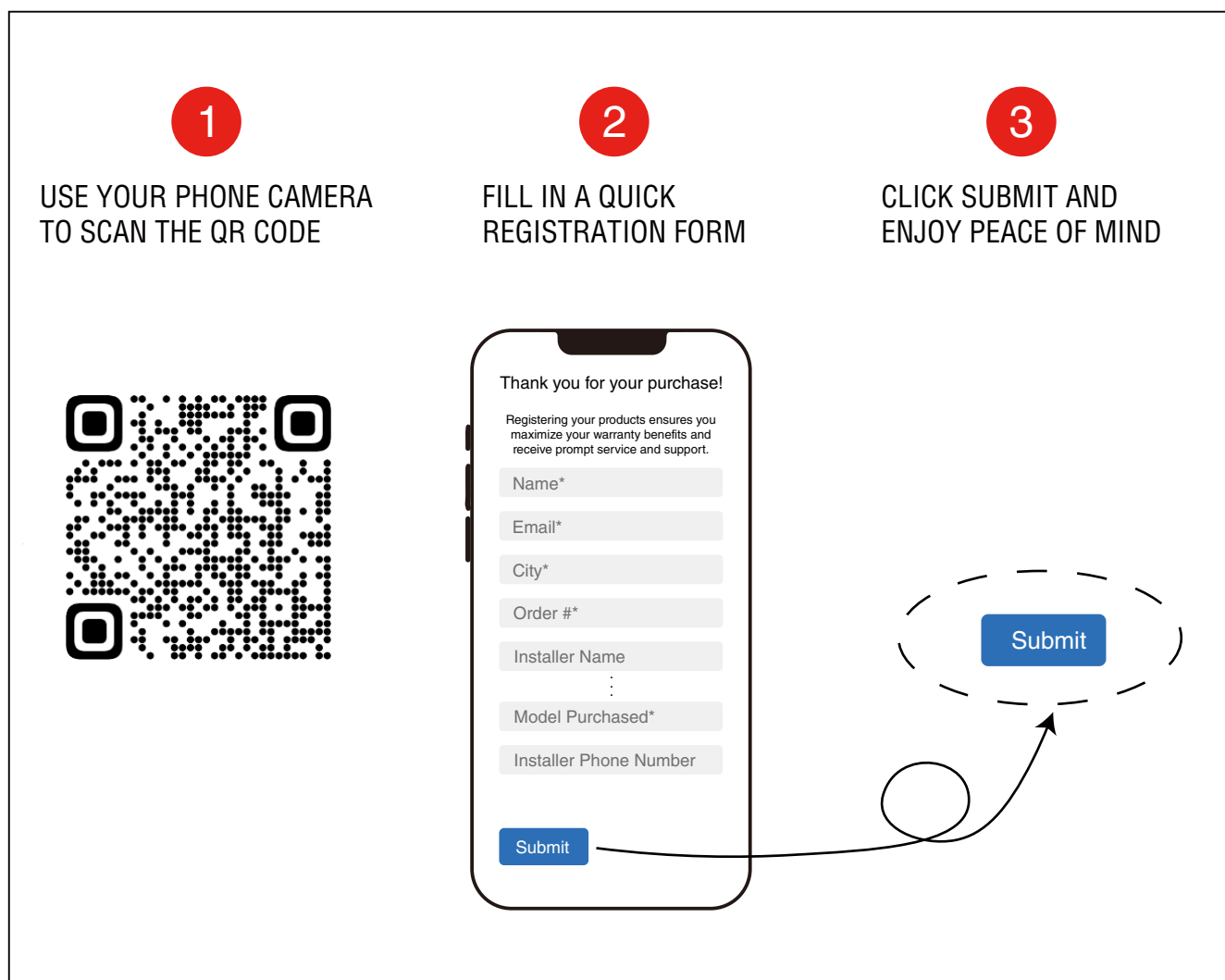
register online at www.saunaspa.com/register or scan the QR code at Page 2.

PRODUCT REGISTRATION*

IMPORTANT: Warranty will not be recognized unless product is registered.

Register online at www.saunaspa.com/register . or Scan the QR code below.

Registering online is fast, secure, and ensures we receive your information.



WARRANTY AND REPAIR GUIDELINES

KPLUNGE warrants that this cold plunge tub be free from manufacturer defects and malfunctions.

Please be advised failure to comply with any of the following will VOID the warranty.

1. Tub must registered within 90 days of delivery.

Warranty Period:

This product is covered under warranty for a period of 12 months for cold plunge, commencing from the date of purchase.

USER INSTRUCTIONS

It is recommended to carefully read the following instructions before use.

- Do not overinflate. Inflate the tub to the recommended pressure (8–10 psi) to prevent damage or deformation.
- Always place the tub on a flat, stable surface, free from sharp objects or debris that could puncture it.
- Ensure the water temperature does not drop to dangerously low levels to prevent cold shock. Consult a physician before use if you have health concerns.
- Keep all electrical components, including the chiller unit and power cords (Not included), away from water to prevent electric shock.
- Always ensure the drain valve is securely closed before filling the tub and fully open when draining to avoid water leakage or pooling.
- The inflatable walls are not designed to support body weight. Sitting or standing on them may cause damage.
- After use, fully drain and dry the tub before deflating. Store it in a dry, shaded area away from direct sunlight, extreme temperatures, or sharp objects.
- Regularly check the inflation level, as temperature fluctuations may cause changes in air pressure. Reinflate if necessary.
- Enter and exit the tub carefully to prevent slips or sudden immersion that may cause cold shock. Use a non-slip mat if necessary.
- Keep sharp objects (such as jewelry, tools, or rough surfaces) away from the tub to prevent accidental punctures.
- Secure cover properly when not in use to keep debris out and maintain water cleanliness.

USER INSTRUCTIONS

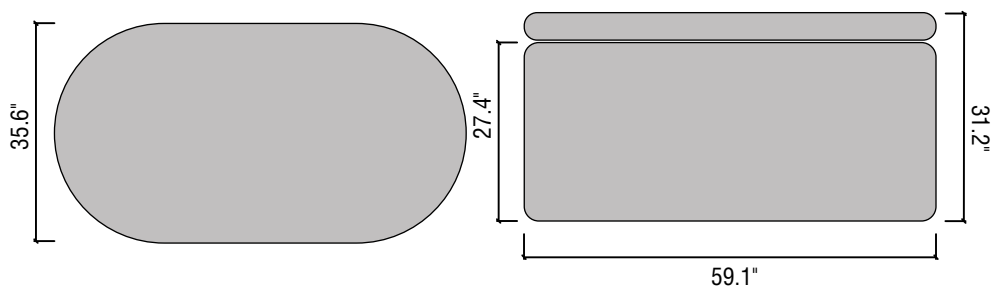
- Children may use the tub only under adult supervision.
- Individuals with skin conditions; broken, irritated or any open wounds, should not use this tub.
- Use with caution after consuming alcohol.
- Consult your doctor before use if you feel unwell, are taking medication, or are pregnant.
- Keep hair dryers, lamps, cell phones, tablets, radios, and other electrical devices at least 5 feet (150 cm) away from the chiller to prevent electrical hazards.
- Avoid overfilling the tub before getting in. Overfilled water can spill, creating slippery surfaces. Exercise caution when entering or exiting the tub to prevent falls.

SPECIFICATIONS

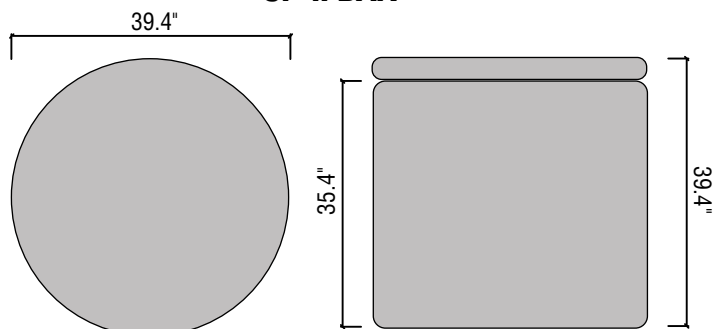
SPECS	CP-IFTUB	CP-IFBAR
Dimensions(L x W x H)	59.1"×35.6"×31.2" (1500×905×795 mm)	39.4"×39.4"×39.4"(1000×1000×1000mm)
Thickness	3.9" (100mm)	
Capacity	103gal (390L)	82gal (310L)
Material	PVC	

PRODUCT SIZE CHART

CP-IFTUB



CP-IFBAR



ACCESSORIES



1. Manual Air pump and connection hose



2. Carry Bag



3. Repair Kit



4. Adapter (2 pieces) and Drain Plug (2 pieces)



5. Ground Mat



6. Thermometer

USAGE

Inflate the Tub

1. Align the hose with the pump connection hole, then tighten and assemble to the pump (Figure A).
2. Spread the tub flat, remove the inflation valve switch on the tub (Figure B), install the inflation hose to the inflation valve (Figure C).
3. Use the pump to inflate the tub (Figure E/Figure F). The recommended air pressure is 8–10 psi.



Figure A



Figure B



Figure C



Figure D



Figure E



Figure F

Connect to Chiller

Chiller and water hoses are not included. When connecting tub to your existing chiller (Or when purchasing a KPLUNGE Chiller) it is important to make sure the hoses are installed properly.

Ensure the tub's outlet valve is connected directly to the chiller inlet valve.

Then, make sure the chiller outlet valve is connected directly to the tub's inlet valve. (Figure G)

Use the provided adapter if necessary.



Figure G

Fill with water

Fill the bathtub with water until the water level is above the outlet of the tub.

How to Care for Your Tub

1. Before using your ice bath tub for the first time, we recommend washing it with warm, soapy water, then rinsing and drying it with a soft, clean cloth.
2. Avoid using abrasive cleaners or high-pressure hoses, as they may damage the tub.
3. Before filling the tub, ensure the drain cap is securely closed to prevent water from leaking.
4. To drain the tub, use the convenient drain tap and hose to empty the water into a nearby sink or drain. Turn the tap carefully to the open position without forcing it. Once the tub is empty, close the tap to prepare it for the next use.
5. For longevity, we recommend draining, cleaning with warm soapy water (as mentioned above), and thoroughly drying your ice bath tub every two weeks.
6. Store the tub in its carry bag, away from sharp objects, extreme temperatures, and direct sunlight to maintain its condition.

Usage of Repair Kit

If the surface of the tub is damaged, use a repair kit to fix it.

WARNING!

- Work in a Well-Ventilated Area -- Repair adhesive contains strong chemicals that can produce harmful fumes. Use it in an open or well-ventilated space. (Repair adhesive glue is not included.)
- Wear Protective Gear -- Always wear gloves and safety goggles to prevent skin and eye irritation.
- Avoid Direct Contact -- Do not allow the adhesive to come into contact with your skin or eyes. If contact occurs, rinse immediately with plenty of water and seek medical attention if necessary.
- Keep Away from Heat and Flames -- Adhesive is highly flammable. Do not use it near open flames, sparks, or high-temperature areas.
- Store Properly -- Keep the adhesive tightly sealed in its original container and store it in a cool, dry place, away from direct sunlight and heat sources.

1. Open the repair kit.



2. Take a repair patch and cut it to the appropriate size.



3. Clean the damaged area and its surroundings, ensuring the surface is completely dry.



4. Apply glue to the damaged area and its surroundings, then attach the repair patch. (Glue is not included in the repair kit.)



5. Ensure the product is kept in a cool, dry place, and wait 24 hours before inflating it to check for any remaining leaks.







COLD PLUNGE CHILLER USER GUIDE

MODELS

CP-CHILL1HP

CP-CHILL08HP



DON'T WAIT! REGISTER NOW!

Register your product within 90 days to ensure your sauna is recognized as an official purchase and is eligible for warranty coverage.

register online at www.saunaspa.com/register or scan the QR code at Page 2.

PRODUCT REGISTRATION*

IMPORTANT: Warranty will not be recognized unless product is registered.

Register online at www.saunaspa.com/register . or Scan the QR code below.

Registering online is fast, secure, and ensures we receive your information.

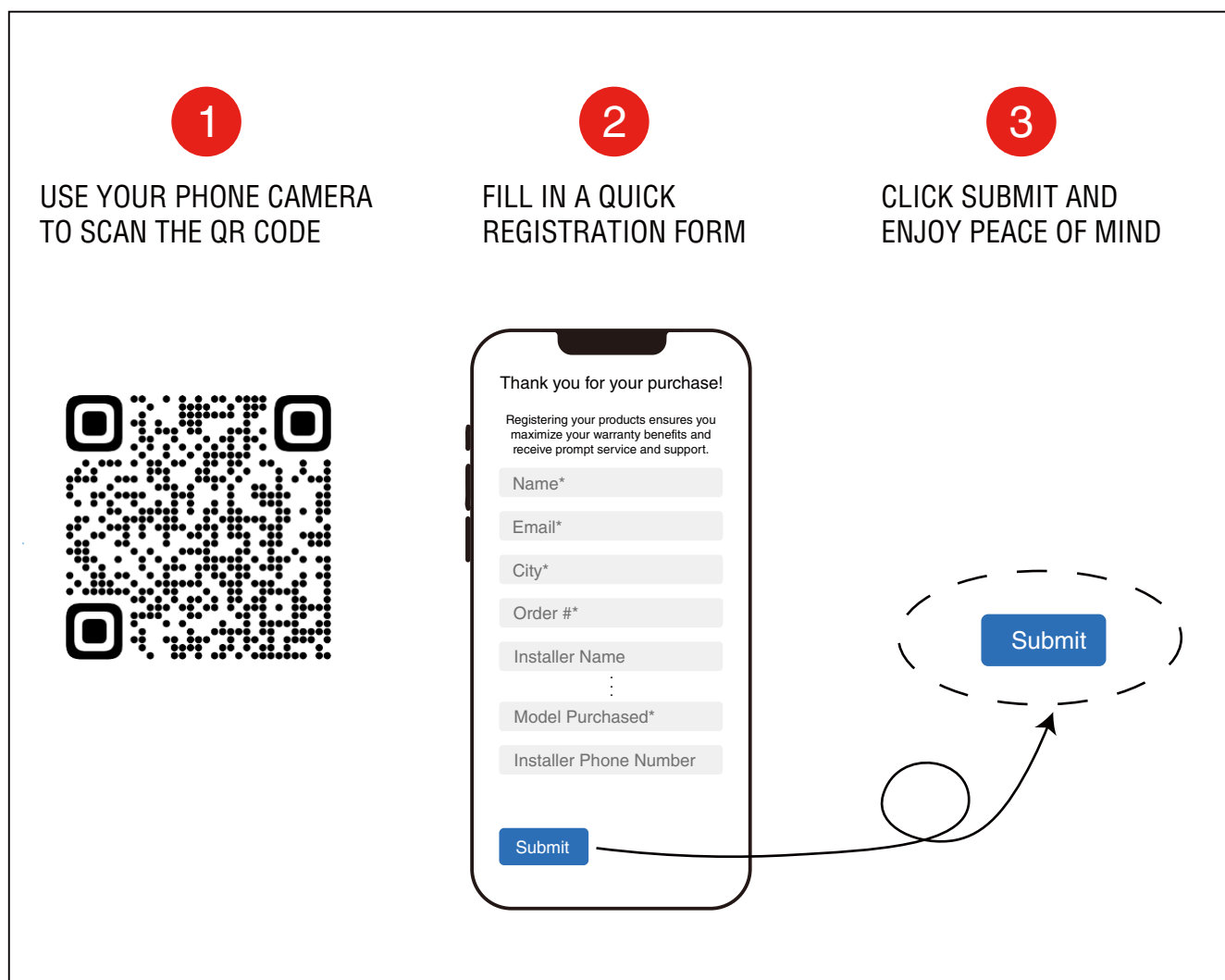


TABLE OF CONTENTS

USER INSTRUCTIONS	5
SPECIFICATONS	6
PRODUCT DIAGRAM	6
ACCESSORIES	6
WIRING DIAGRAM	7
CONNECTION DIAGRAM.....	7
QUICK START GUIDE	8
USAGE	9
MAINTENANCE & CLEANING.....	12
TROUBLE SHOOTING	14

IMPORTANT!

- Malfunctions, damages, part replacements and labor resulting from improper installation, negligence, or lack of care and maintenance will NOT be covered under the SaunaSpa Warranty.
- PRIOR TO INSTALLATION,ENSURE THAT THE PRODUCT IS POWERED OFF.

USER INSTRUCTIONS

It is recommended to carefully read the following instructions before use.

 **For indoor use only**

CAUTION

- Operators must be 18 years or older.
- Do not operate the chiller with wet hands.
- Keep the power cord away from heavy objects and do not run it under carpets or rugs.
- Do not insert objects into the chiller's vents or openings.
- Use caution around children, the elderly, and individuals with mobility issues.
- Always keep the chiller upright on a stable, level surface; do not invert.
- Install the chiller in a well-ventilated area, ensuring at least 100 cm (39 in.) of clearance around vents. Avoid placing it in closets or cabinets, or other small places.
- Do not disassemble or modify the chiller.
- Avoid using the chiller in very humid or dusty conditions.
- For electrical issues, contact authorized service personnel.
- Keep pets and children away while the chiller is operating.
- Report any signs of damage, leaks, unusual noises, smells, or performance issues immediately.
- Disconnect power before maintenance or cleaning.
- Avoid placing the chiller in direct sunlight or near heat sources.
- Ensure the filter is installed when the chiller is running.
- Regularly clean the water filter and dust net for optimal performance.
- If the ambient temperature drops to 0°C (32°F), disconnect the pipes and fully drain the chiller by opening the drain valve to prevent freezing damage.
- Before turning on the chiller, ensure there is enough water in the bathtub and all pipes are properly connected.
- Running the water pump without water can cause noise and reduce its lifespan.
- Never cover the intake or exhaust openings with clothes, towels, or other objects.
- Use extreme caution when operating near children, the elderly, or individuals with limited mobility.
- Never insert fingers or foreign objects into the ventilation grilles or other parts of the chiller.
- Do not climb, sit, or stand on the chiller, or place objects on top of it.

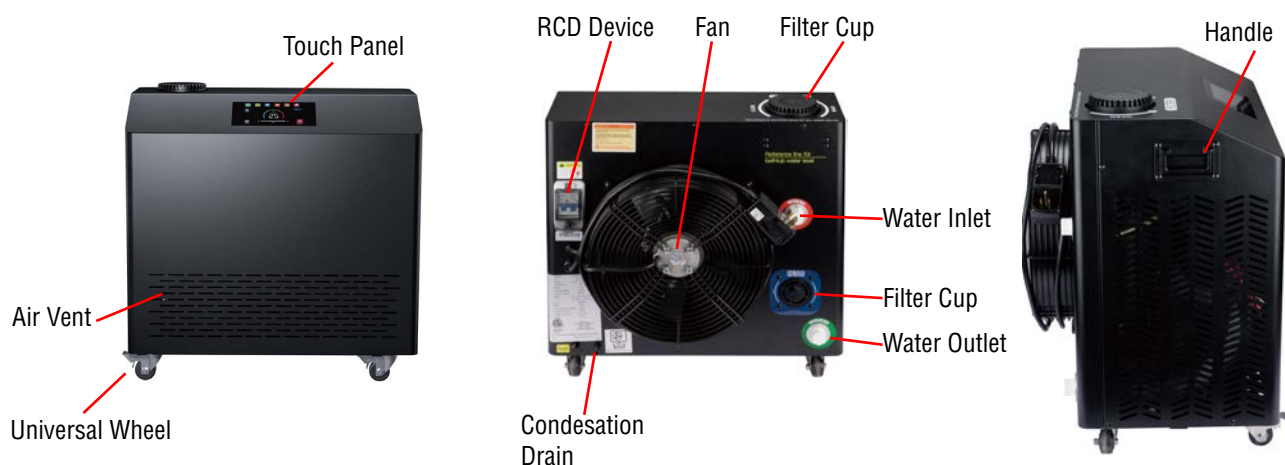
In order to prevent accidents or death, please pay attention to safety.

- During and after transportation, always keep the chiller upright on a stable surface.
- After transportation, allow the chiller to sit for 24 hours before use to let the refrigeration gas settle.
- Ensure the chiller is plugged into a properly rated AC socket or extension cable.
- Keep the chiller dry at all times. Do not immerse, splash, or spray water on the unit. If it gets wet, unplug it immediately and do not use it.
- Do not install in direct sunlight. Chiller should always be protected from outside elements.
- Never leave the chiller powered on while in the water. Always turn off the unit during cold water therapy sessions.
- If the chiller stops working or fails to start, unplug it immediately and do not use it.
- We are not responsible for any misuse or failure to follow the safety instructions provided.
- Do not block the fan outlet of the unit, as this will reduce heating and cooling efficiency and waste power.
- Do not operate the equipment when it is dirty. Regularly check and clean both the equipment and the filtering device.
- Do not touch the fan during operation to avoid injury.
- Ensure that the rated voltage of the product matches the power supply voltage in your home.
- During operation, do not touch the switch with wet hands, and avoid contact with electrical components.
- Do not turn the chiller upside down.
- Do not use without the filter element installed.
- Ensure there is at least 10cm of free space around the chiller for proper ventilation.

SPECIFICATIONS

SPECS	CP-CHILL1HP	CP-CHILL08HP
Voltage	120V AC 60Hz	
Input Power	1150W	725W
Cooling Capacity	3050W	1790W
Net Weight	40KG	35KG
Product Dimension	21.3"× 15.7"×21.7"(540×400×550mm)	18.5"×13.8"×20.9"(470×350×530mm)
Cooling Time 73°F to 41°F (53 gal/Ambient temp 82°F)	2.8h or less	3.9h or more
Refrigerant	R32	
Adjustable Water Temperature Range	38°F-104.0°F	
Working Temperature Range	34°F-104.0°F	
Store Temperature & Relative Humidity	-4°F-131°F / 20%-85%	
Input Water Temperature Range	40°F-92°F	
Product Feature	Ozone disinfection, App control, TFT Touch panel	

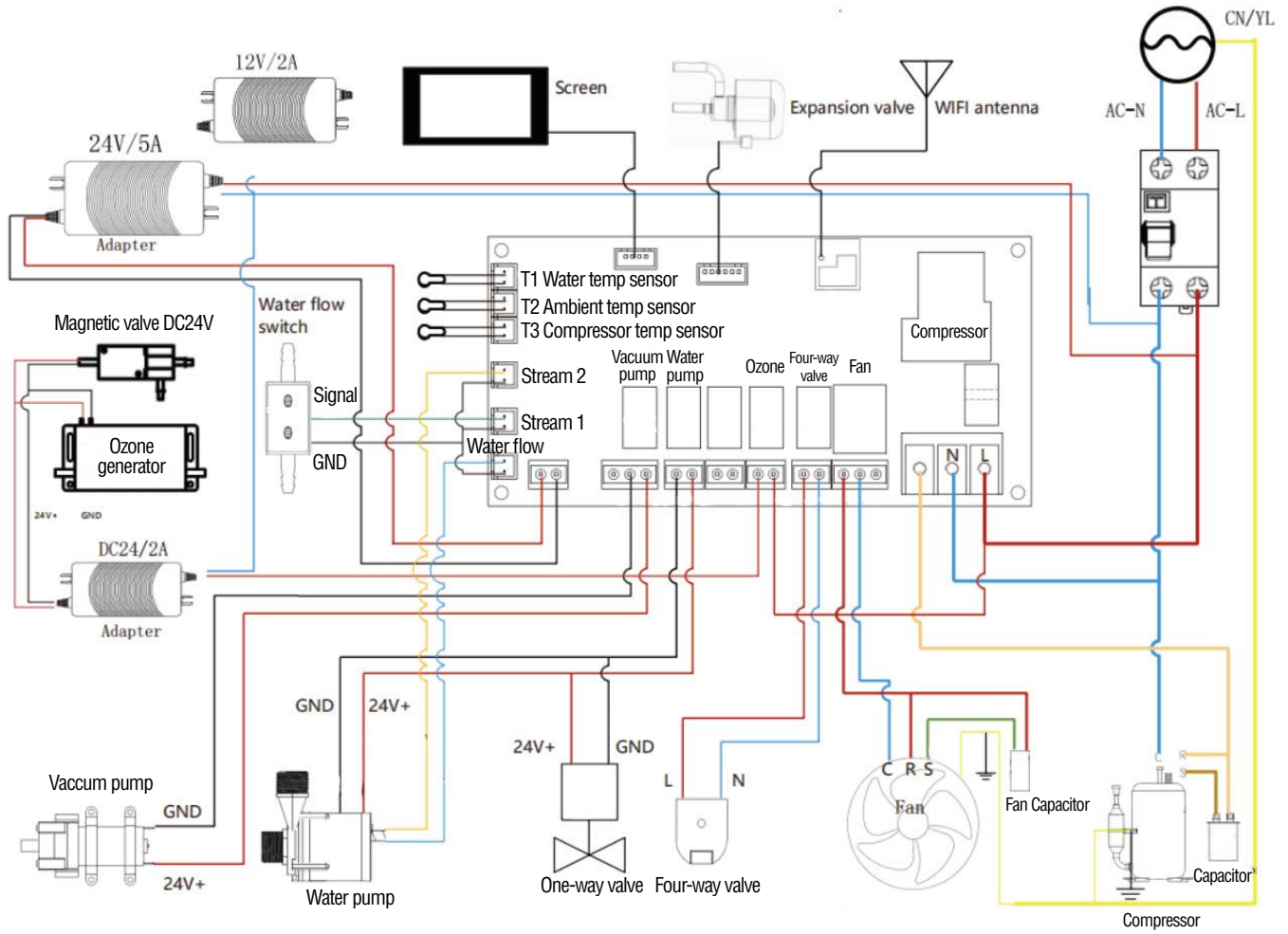
PRODUCT DIAGRAM



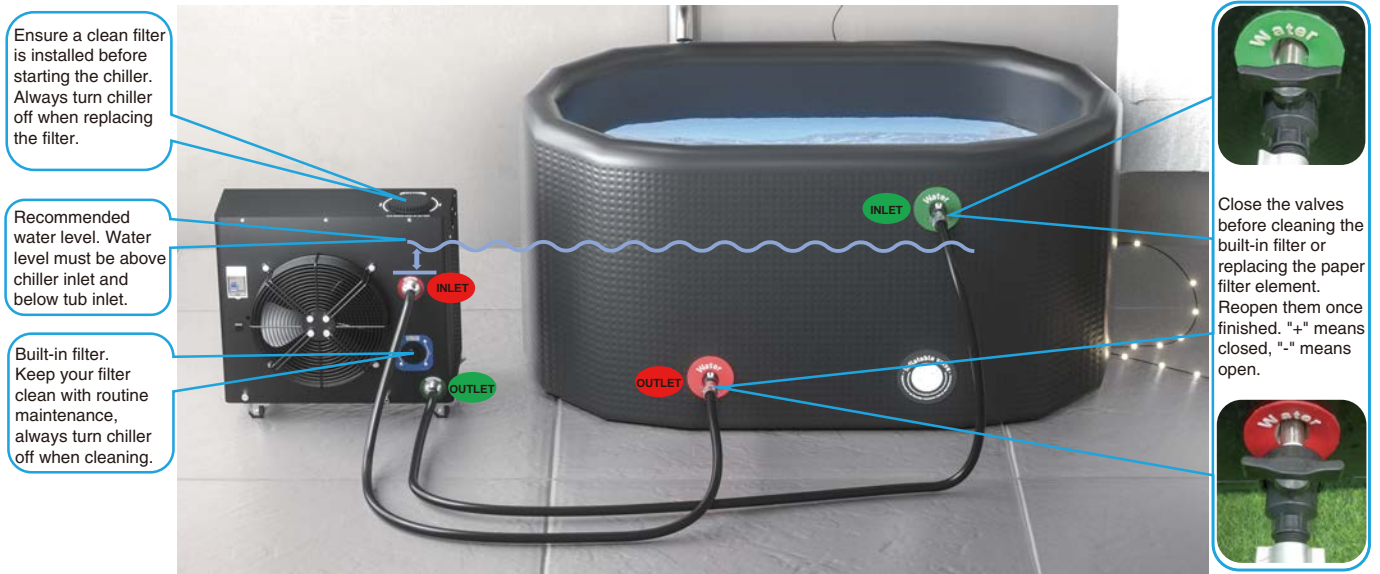
ACCESSORIES



WIRING DIAGRAM



CONNECTION DIAGRAM



NOTES: Before turning on the chiller, ensure the bathtub has enough water and all water pipes are properly connected. Otherwise, the water pump may idle, causing noise and reducing its lifespan.

QUICK START GUIDE

1. Place the chiller on a stable surface near your bathtub, ensuring it is at the same level as the bathtub. (Figure A)
2. Install the filter lid on top and ensure it is hand-tightened. (The installation method refer to MAINTAINANCE section)
3. Make sure the built-in filter is properly installed. (Figure B) (The installation method refer to MAINTAINANCE section)
4. Install the valves on the tub's inlet and outlet, ensuring they are hand-tightened. (Figure C)
5. Connect both the inlet and outlet water pipes, making sure the valves are hand-tightened. Then, fill the bathtub with enough water. The water level should be higher than the chiller inlet but lower than the tub inlet. (Figure D)
6. Plug in and turn on the chiller. Once powered on, the chiller will begin operating. (Figure E)
7. Please check the 'Water Flow' reading on the control panel when the chiller starts operating. The water flow should be higher than 15L/min.
8. **IMPORTANT:** If both the bathtub inlet and outlet are below the water level, air may remain in the chiller, affecting the water flow. To resolve this, open the drain slightly to release some water. (Figure F)
8. The built-in ozone sterilization system automatically activates periodically to disinfect the water.
9. Once the desired temperature is reached, power off the chiller before starting your cold water therapy session.



Figure A



Figure B



Chiller



Tub

Figure C

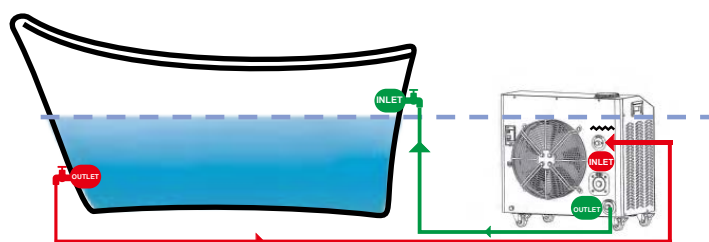


Figure D



Figure E



Figure F

USAGE

TOUCH PANEL

Main Interface

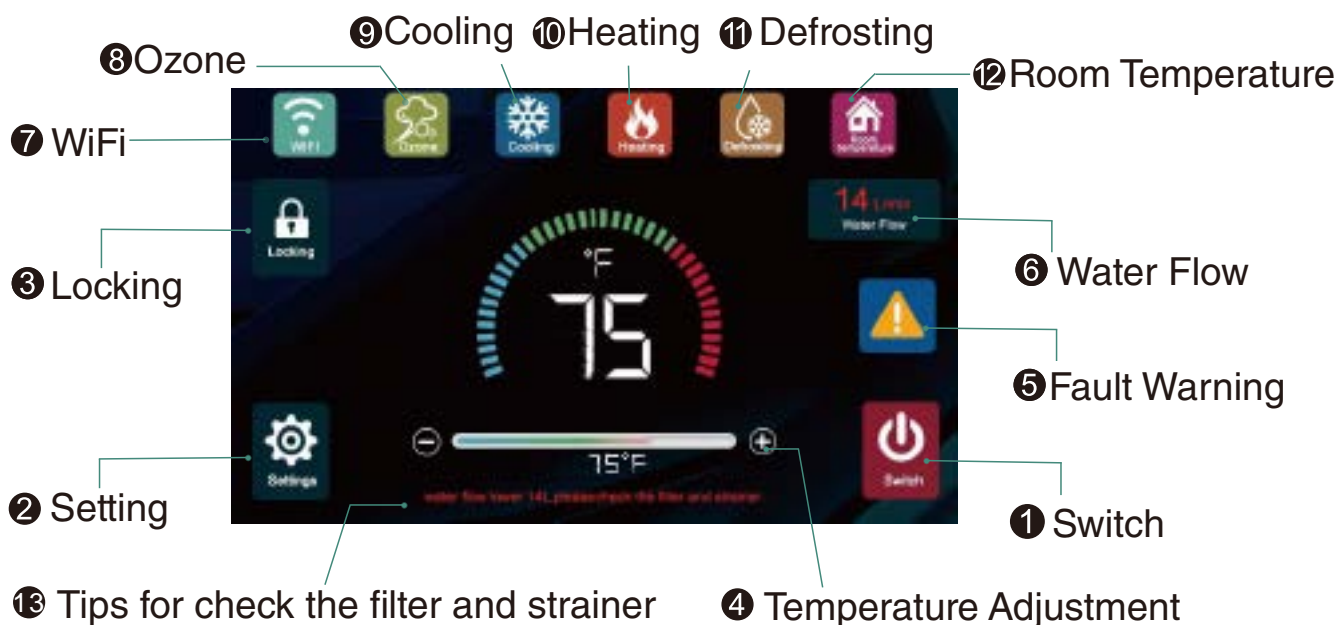
The corresponding icon will only light up when the current function is turned on.



- ① Turn on/off
- ② Press to enter the setting screen
- ③ Press 3-5s to lock or unlock
- ④ Press + or - to set the temp
- ⑤ It will be displayed when there is a failure
- ⑥ Displays the current water flow





Remarks: ⑩⑪ lights up only for chillers with a heating function when in heating mode.

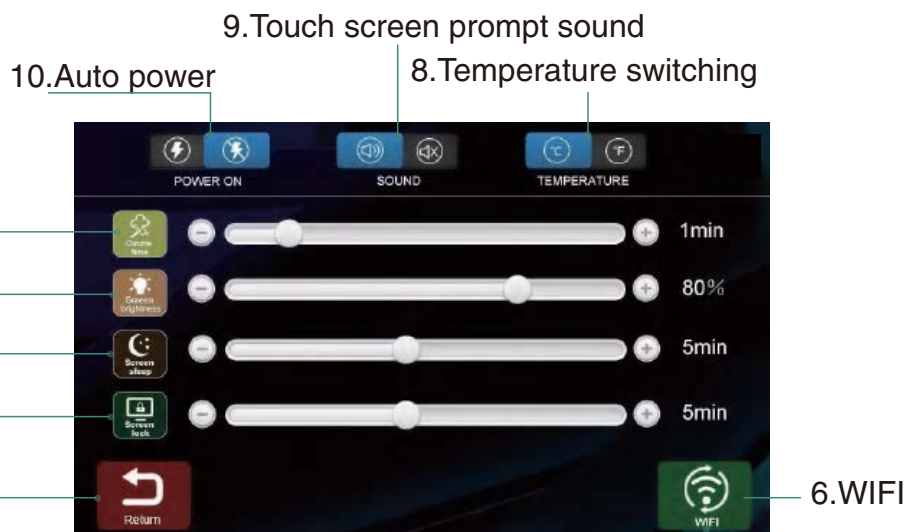
- ⑬ When the water flow is lower than 14L/min, a prompt to remind the user to check the filter and built-in filter will appear.



SETTING SCREEN

1. Adjust the Ozone working time interval: 0 min (close) and max to 5 min
2. Adjust the screen brightness: min 10%, max 100%
3. Adjust the screen sleep time: 0 min (close), max 5 min
4. Adjust the screen lock time: 0 min(close), max 5 min
5. Click return button to enter the first interface

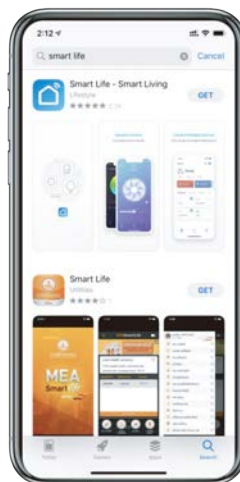
6. Long press to enter the WiFi function (connect Smart Life) 
7. Temperature unit switching(°C/°F) 
8. Adjust the button sound: ON/OFF 
9. Power-on automatic operation ON/OFF 



WIFI CONNECTION

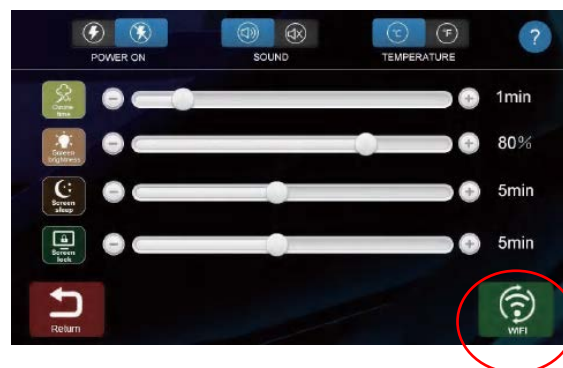
1. APP installation

Search for “Smart Life” in App Store(iPhone) or Google Play Store(Android), or scan the QR code below to install the APP.



2. Set the control panel to pairing mode

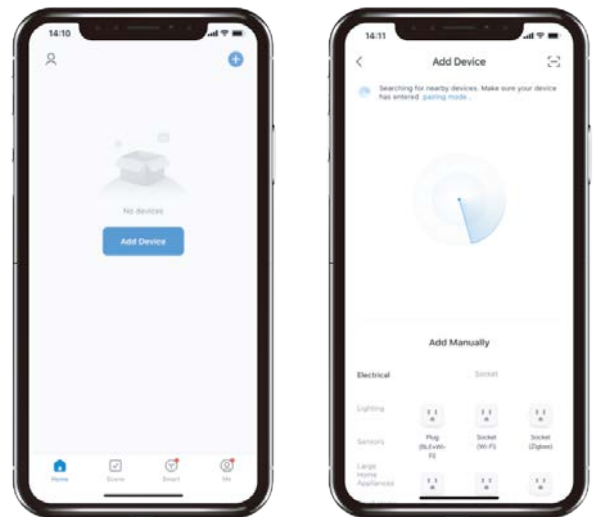
Turn ON the chiller, click the setting key, then press WIFI key for 3~5 seconds until the WIFI icon blinks.



3. Add device in APP

Use your smartphone to connect to a Wi-Fi hotspot (2.4G only), then open the “Smart Life” app.

Click “+” or “Add Device” on homepage.



4. Find the device

The device named “KPLUNGE ICE BATH CHILLER” will appear on the Add Device page. (Figure A)

Click on it to begin pairing. (Figure B)

Enter the hotspot password and click “Next”. (Figure C)



Figure A



Figure B

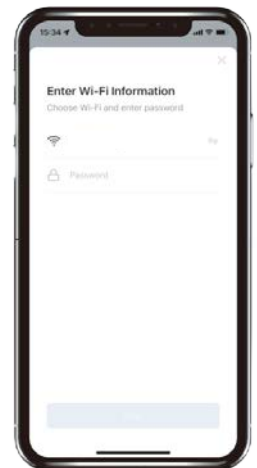
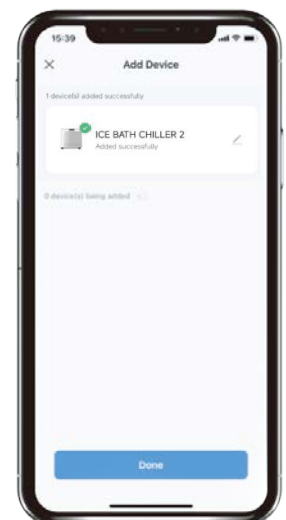


Figure C

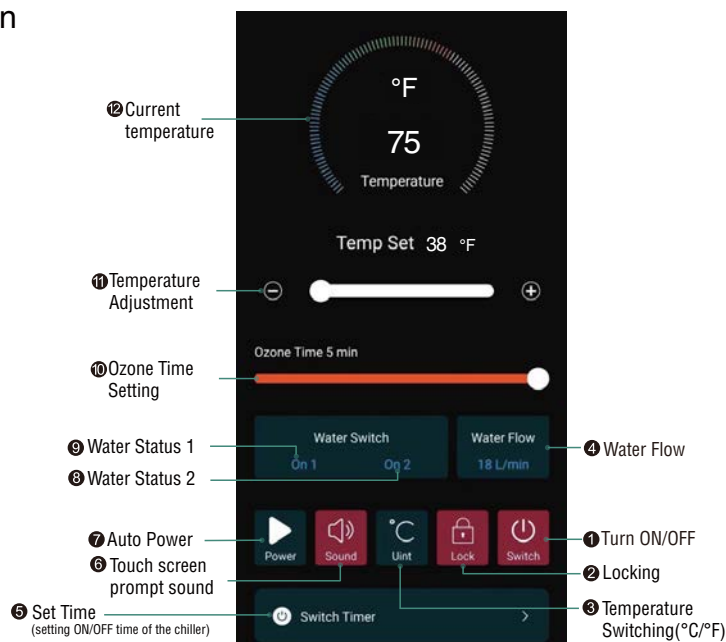
5. Finish Pairing

When the Add Device page displays “Added successfully”, click “Done”.



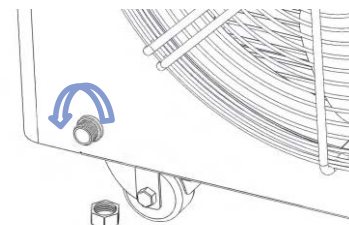
After pairing, the icon named “KPLUNGE ICE BATH CHILLER” will appear on the homepage of the “Smart Life” APP. Click “KPLUNGE ICE BATH CHILLER” icon to access the operation page.

1. Turn on/off (Turn ON/OFF the chiller)
2. Locking (Touch panel lock/unlock)
3. Temperature unit switching (°C/°F)
4. Water Flow
5. Set Time
6. Touch screen prompt sound (ON/OFF)
7. Power-on automatic operation ON/OFF
8. Water Status 2 (Water switch status)
9. Water Status 1 (Water flow signal status)
10. Adjust the Ozone working time interval: 0 min (close) and max to 5 min
11. Temperature adjustment (3-42°C/38-104°F)
12. Current Temperature



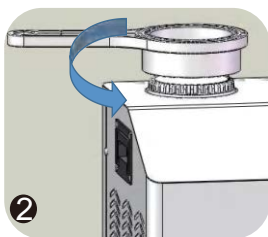
MAINTENANCE & CLEANING

1. Never clean the chiller with strong bleach-based detergents.
2. Do not add corrosive disinfectants, such as chlorine tablets, to the water.
3. Always turn off chiller and disconnect from the power supply before performing and maintenance or cleaning.
4. Never leave the chiller outside in temperatures below 34°F if there is water inside.
5. The drain outlet must be opened to empty the water inside the chiller in the following situations:
 Long-term inactivity: Prevents water from deteriorating.
 Ambient temperature below 34°F: Prevents freezing and potential damage to internal pipelines.
6. Replace the filter when it becomes dirty. If a water flow warning appears on the screen, check the filter to maintain a normal water flow rate and ensure optimal performance.

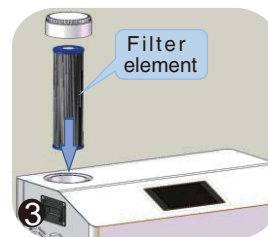




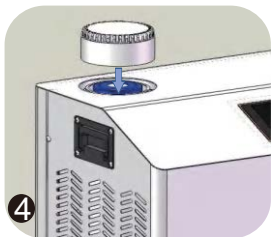
1 Close the valves of the inlet and outlet of the tub



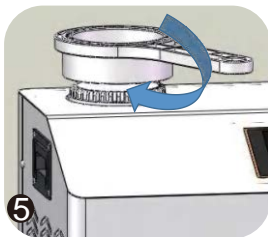
2 Open the lid with the wrench



3 Take out the old filter element



4 Put in a new filter element

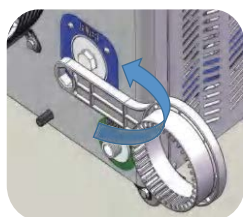


5 Close the lid and tighten with the wrench



6 Open the valves of the inlet and outlet of the bathtub

7. Check and clean the built-in filter if the water flow rate decreases. We recommend cleaning the filter every four weeks to ensure the water pump operates efficiently.



Open the lid with the wrench small side.



Take out the mesh filter and rinse it with water.



Put in a clean mesh filter.

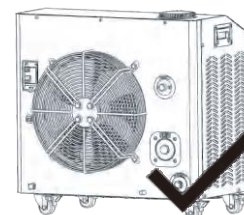
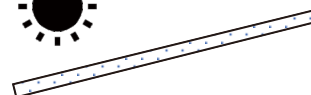


Close the lid and tighten with the wrench small side.

8. Check and clean the dust net if the cooling/heating efficiency decreases. We recommend cleaning it every three months to ensure the condenser functions optimally.



9. Do not place the device directly under the sun, rain, or snow. Ensure the machine is placed under a shelter to protect it.



TROUBLESHOOTING

When the chiller encounters a malfunction, the fault reason will be displayed on the control panel. You can refer to this table to troubleshoot the issue based on the fault code. If an issue arises that is not listed in the table, please immediately disconnect the power and contact KPLUNGE promptly.

WARNING! Be sure to disconnect the power before opening for maintenance!

Error Reason/Problem	Possible Causes	Recommend Action
T1 temperature sensor failure	The T1 temperature sensor is damaged, or it is not installed properly.	Check if the temperature sensor is properly connected or damaged. Please contact KPLUNGE.
The water temperature is out of the range of use	The inlet water temperature exceeds 113°F (45°C) and is outside the usable range.	Please wait until the water temperature drops below 107°F (42°C) before use.
	The inlet water temperature is below 33.8°F(1°C), which is outside the usable range.	Please set the water temperature to above 41°F(5°C).
T2 temperature sensor failure	The T2 temperature sensor is damaged, or it is not installed properly.	Check if the temperature sensor is properly connected or damaged. Please contact KPLUNGE.
T3 temperature sensor failure	The T3 temperature sensor is damaged, or it is not installed properly.	Check if the temperature sensor is properly connected or damaged. Please contact KPLUNGE.
The cooling or heating speed has slowed down or cannot reach the set temperature.	<ol style="list-style-type: none"> 1. The dust net is clogged with dirt. 2. The filter element is clogged, causing the water flow to slow down. 3. The ambient temperature is too high(cooling) or too low(heating). 4. Refrigerant system pressure is abnormal. 	<ol style="list-style-type: none"> 1. Clean the dust net. 2. Clean or replace the filter. 3. Operate the chiller within the appropriate ambient temperature range. 4. Please contact KPLUNGE.
The control panel is not displaying anything or responding to touch.	<ol style="list-style-type: none"> 1. Poor contact of the wiring. 2. The control panel is damaged. 	<ol style="list-style-type: none"> 1. Check the connection cable. 2. Please contact KPLUNGE.

