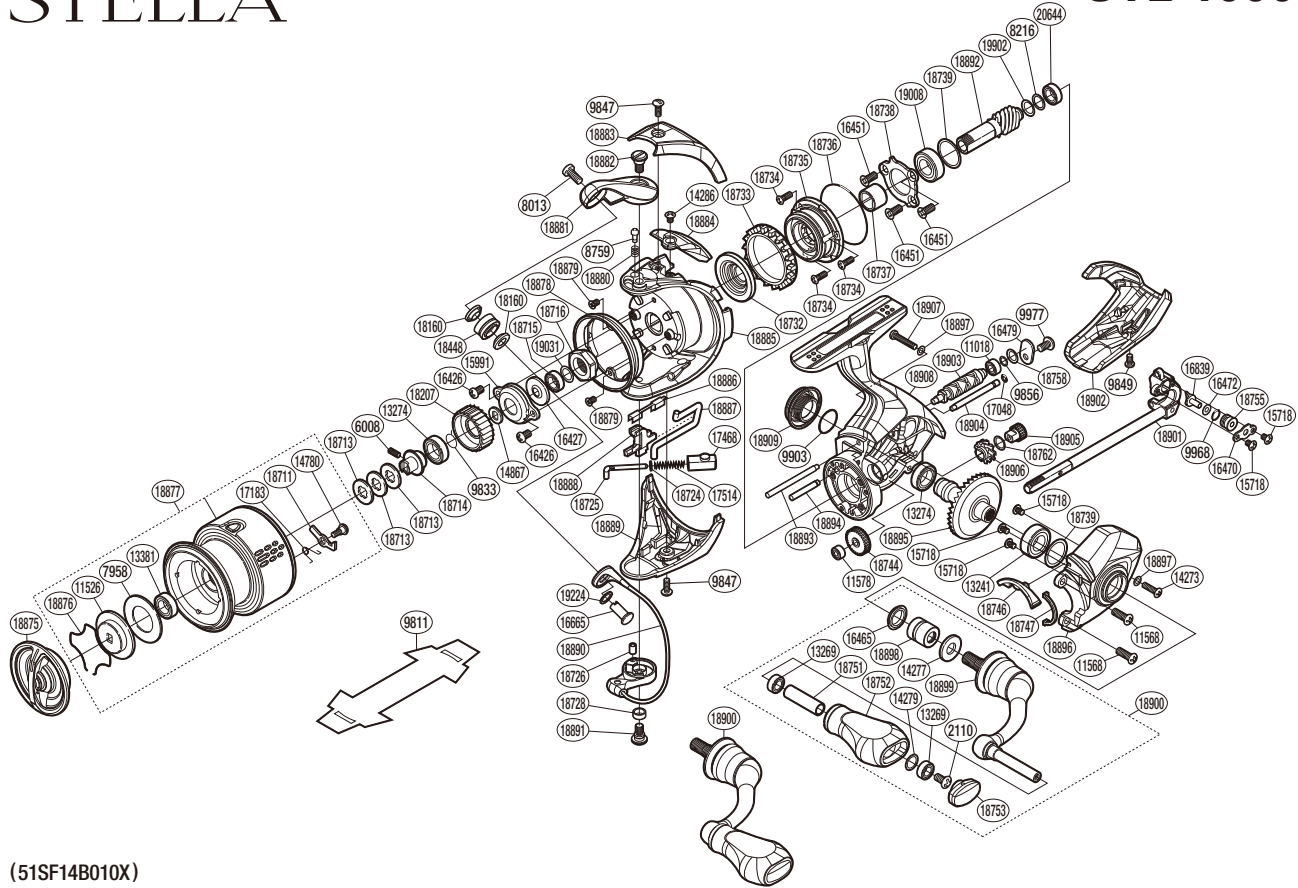


# SHIMANO

## STELLA

## STL-1000



(51SF14B010X)

#	Part No.	Description	#	Part No.	Description	#	Part No.	Description
2110	103E9	Screw	17048	10908	O Ring	18880	10024	Click Spring
6008	10PN2	Set Screw	17183	10BQF	Drag Click Spring	18881	10S25	Bail Arm
7958	102ZF	Drag Washer	17468	10R2E	Bail Spring Guide B	18882	10027	Screw
8013	10K40	Screw	17514	105R7	Bail Spring	18883	10S27	Bail Spring Cover
8216	10HV4	Washer	18160	1020L	Bearing Spacer	18884	1001R	Counterbalance Cover
8759	106UX	Click Pin	18207	10SYS	Drag Click Ratchet	18885	10S22	Rotor
9833	107V2	Ratchet Spring	18448	101BJ	Line Roller Set (With Bearing)	18886	10TDX	Bail Trip Sheet
9847	10CYU	Screw	18711	10TJX	Drag Click	18887	1002L	Bail Trip Lever
9849	106ZG	Screw	18713	10BU8	Spool Washer	18888	10S24	Bail Trip Lever Cover
9856	10HZ1	Washer	18714	10DKF	Bearing Bushing	18889	10S29	Bail Hold Support Guard
9903	108WA	O Ring	18715	10TD2	Main Shaft Spacer Assembly(With Bearing)	18890	10T9Q	Bail Assembly
9968	108W9	O Ring	18716	101CY	Rotor Nut	18891	10S2M	Screw
9977	103LH	Screw	18724	101D9	Spring Guide A Support	18892	1002M	Pinion Gear
11018	10PDA	Ball Bearing	18725	10DJN	Bail Spring Guide A	18893	10S2E	Oscillating Guide A
11526	10B9X	Key Washer	18726	10DKC	Bail Spring Guide A Bush	18894	10023	Idle Gear B Shaft
11568	10M2C	Screw	18728	101D0	Bail Trip Cam Bushing	18895	10020	Drive Gear
11578	10PC0	Ball Bearing	18732	101D5	Rotor Ring	18896	100P6	Side Cover Assembly
13241	104JD	Ball Bearing	18733	10DK7	Friction Ring	18897	10GD4	Washer
13269	104VX	Ball Bearing	18734	101D7	Screw	18898	10022	Handle Shaft Cover B
13274	104PP	Ball Bearing	18735	10S2L	Roller Clutch Assembly	18899	100PD	Handle Shank Assembly
13381	104JT	Ball Bearing	18736	10DKD	O Ring	18900	10DKG	Handle Assembly
14273	10LUY	Screw	18737	10DJY	Roller Clutch Inner	18901	100P5	Main Shaft Assembly
14277	10FMF	Large Handle Shank Washer	18738	10DJZ	Bearing Retainer	18902	10S1Z	Rear Protector
14279	10G8G	Washer	18739	10RYR	Washer	18903	10S2A	Worm Shaft
14286	10MPF	Screw	18744	10DK0	Idle Gear	18904	10029	Oscillating Guide B
14780	10A6F	Screw	18746	10DJK	Bail Trip Strike	18905	10021	Idle Gear B S
14867	103PE	Spool Support	18747	10DKA	Flange Water Proof	18906	1001A	Idle Gear
15718	1055G	Screw	18751	1022F	Handle Knob Pipe	18907	10R23	Screw
15991	1076P	Rotor Nut Lock Plate	18752	10TDL	Handle Knob Assembly	18908	100PJ	Body Assembly
16426	103LB	Screw	18753	101CV	Handle Knob Seal	18909	10S2S	Handle Screw Cap
16427	107L2	Bearing Water Proof	18755	101BY	Oscillating Slider Bushing	19008	1022A	Ball Bearing
16451	10ML6	Screw	18758	10TK0	Washer	19031	1026J	Washer
16465	10PXU	Handle Shaft Seal	18762	10TJT	Washer	19224	1002S	Washer
16470	10HAG	Oscillating Pawl Cover	18875	1002K	Drag Knob Assembly	19902	10DJ1	Washer
16472	1059T	Washer	18876	10B6M	Drag Washers Retainer	20644	10RKR	Ball Bearing
16479	10ATB	Worm Shaft Retainer	18877	10R20	Spool Assembly			
16665	10L02	Line Roller Support	18878	10S28	Rotor Brim			
16839	106VK	Oscillating Pawl	18879	10DND	Screw	9811	10PBS	Reel Seat Spacer (Accessory)

Please note that the number of adjusting washers may not be the same as shown in the exploded views.  
(Adjustment will vary with each individual product.)