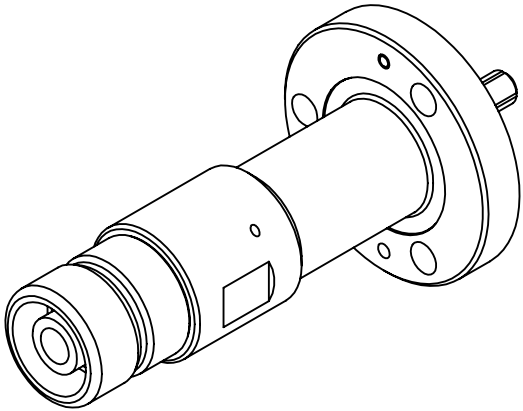


This document, including the design, configuration and mechanical features revealed herein are the sole, confidential and proprietary property of TRU Corporation. Reproduction or use thereof, in whole or part, is prohibited without the prior written consent of TRU Corporation.

REV.	DESCRIPTION	DATE	APPROVED
-	ORIGINAL ISSUE	09/13/13	AM



ENGINEERING DATA

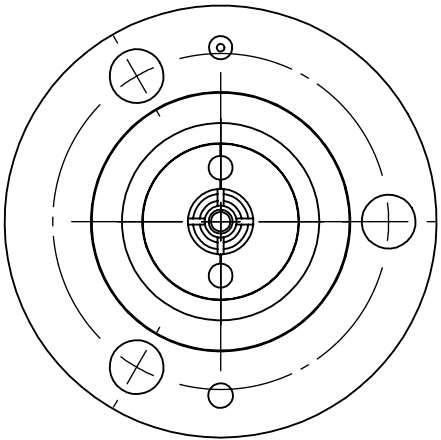
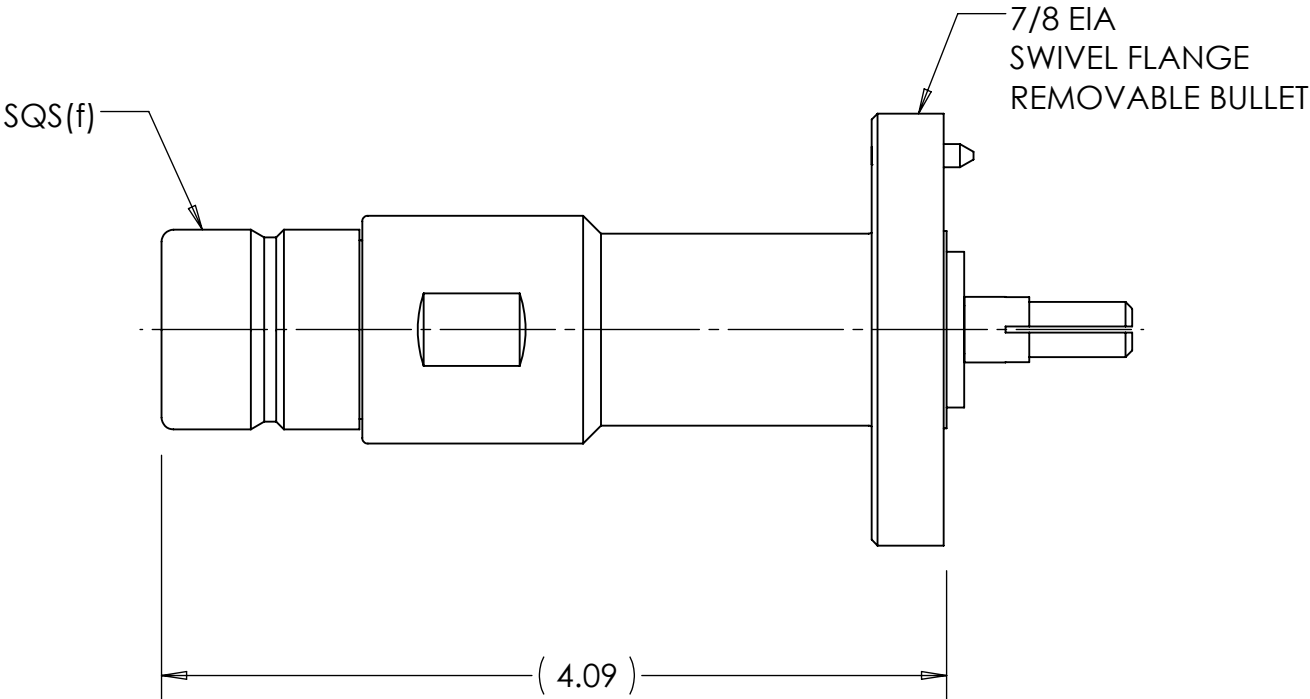
ELECTRICAL:
IMPEDANCE: 50 OHMS NOMINAL
FREQUENCY RANGE: DC to 500 MHz


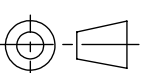
MECHANICAL:
INTERFACE: 7/8 EIA per EIA RS-225
SQS(f) per TRU STANDARD

MATERIAL:
CONTACTS: BRASS & BERYLLIUM COPPER
INSULATORS: PTFE
BODIES: BRASS

FINISH:
CONTACTS: SILVER PLATED
BODIES: NICKEL PLATED

- NOTES:
- UNLESS OTHERWISE SPECIFIED; ALL DIMENSIONS ARE FOR REFERENCE ONLY.
 - HARDWARE INCLUDED BUT NOT SHOWN
 - 3 HEX HD BOLTS (1/4-20)
 - 3 HEX NUTS (1/4-20)
 - 6 SPLIT WASHERS (1/4)
 - 1 O-RING



MATERIAL		DO NOT SCALE DRAWING		DRAWN AM		DATE 09/10/13		<div></div> <div>TRU Corporation 245 Lynnfield St, Peabody, MA 01960</div> <div>EXPERIENCE. TRU INNOVATION.</div>	
		UNLESS OTHERWISE SPECIFIED: DIMENSIONS ARE IN INCHES TOLERANCES: FRACTIONS: ± 1/64 .XX : ± .01 .XXX: ± .005 ANGLES: ± 1/2° MACHINED SURFACES: <div>63/√</div>		ENG APPR. AM		DATE 09/11/13			
				MFG APPR.		DATE			
				OTHER APPR.		DATE			
COMMENTS:		THIRD ANGLE PROJECTION <div></div>		SIZE B		DWG. NO. TRU-12452		REV -	
				CAGE CODE: 92180		SCALE: 1:1		SHEET 1 OF 1	
surface area: sq inch		weight: 0.94 lbs							