

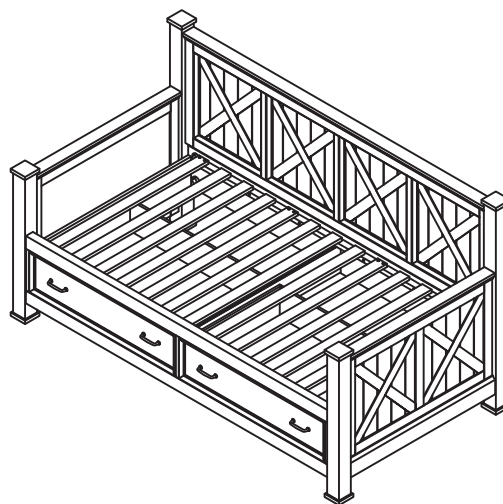
Daybed

IMPORTANT

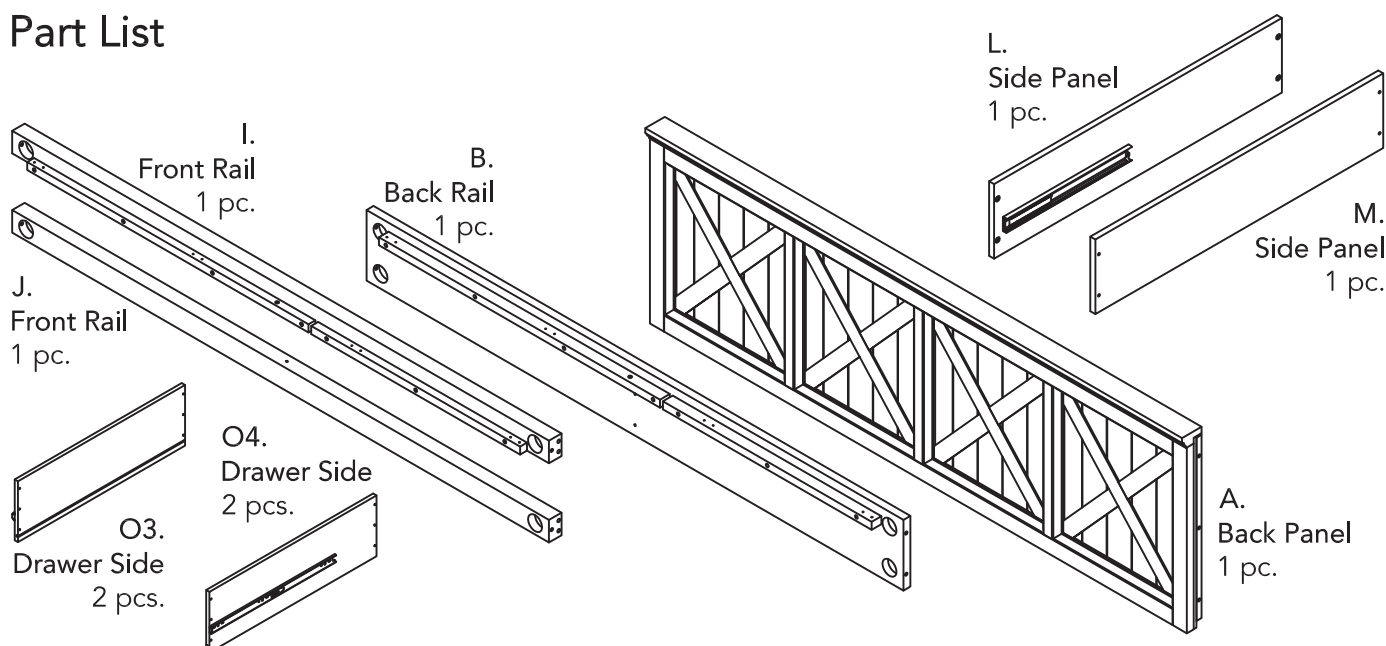
Carefully remove all the parts from the carton and place them individually on a soft cloth to prevent scratches or other damage.

Carefully and strictly follow these assembly instructions to ensure a completed product as designed.

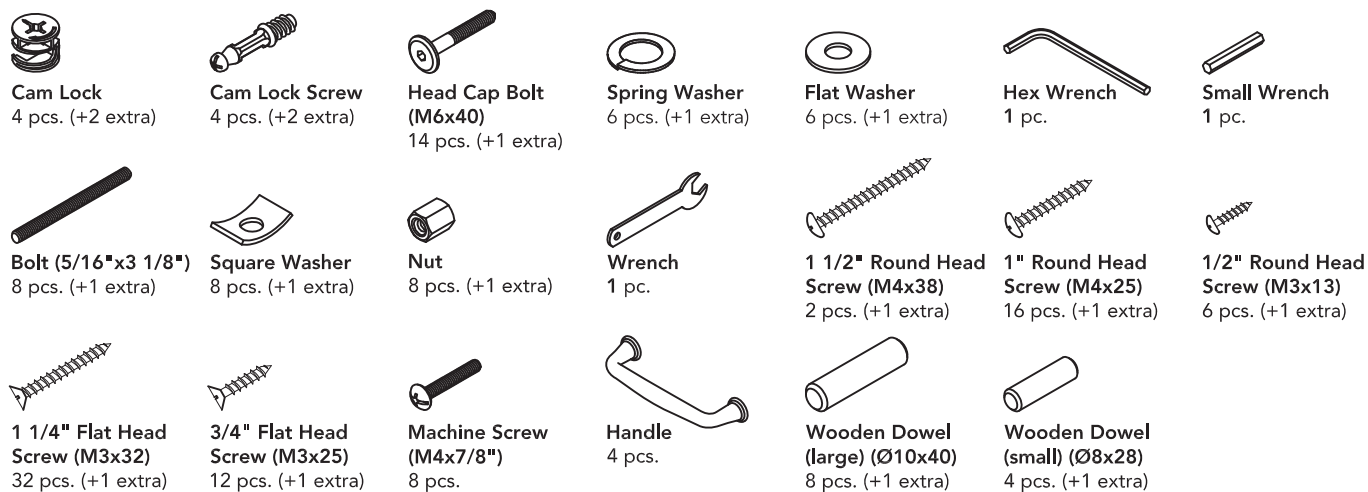
Do not use power tools above 8 volts to assemble.



Part List



Hardware List



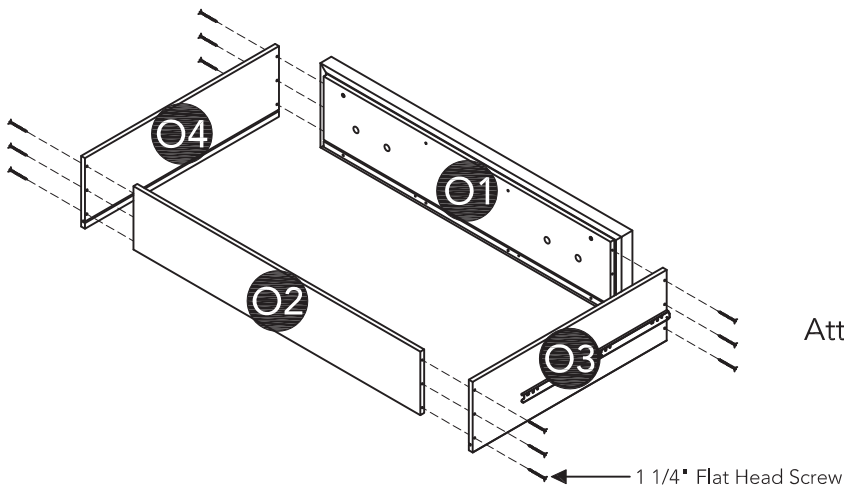
Cartons 20 05523 0852 and 0853 are also needed for assembly.

Tool(s) required for assembly: Phillips screwdriver, Level

Home Styles Customer Service: www.homestyles-furniture.com,
servicedesk@homestyles-furniture.com, 888-680-7460, 877-831-0319

Assembly Instructions 8/10

Drawer (O)



STEP 11

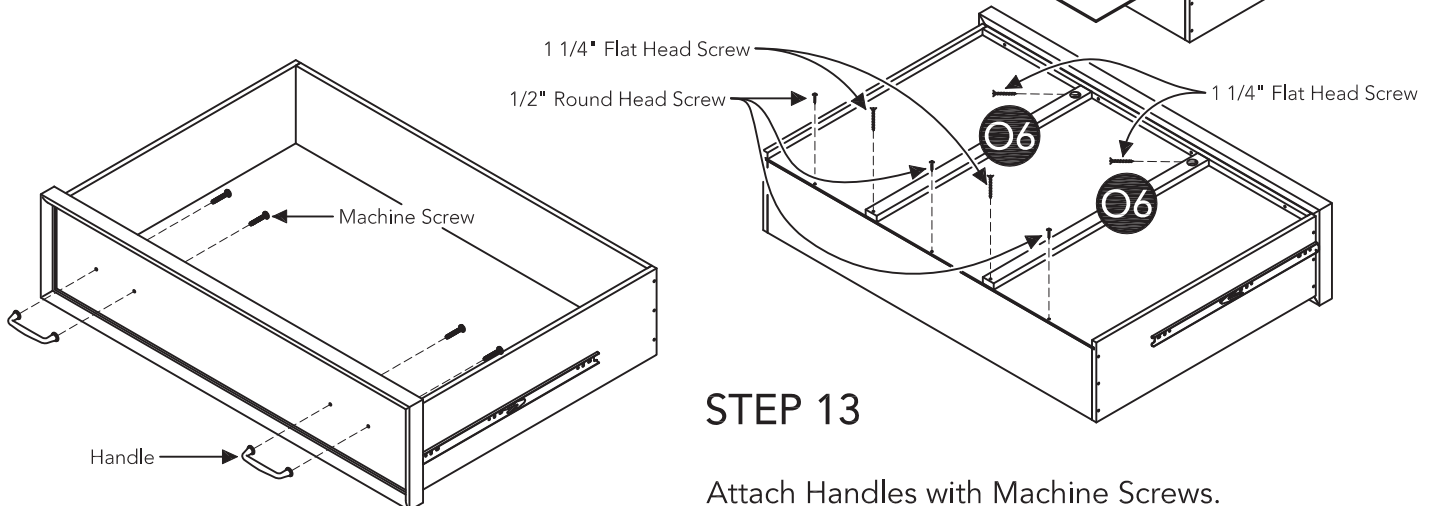
Attach Drawer Sides (O3) and (O4) to Drawer Front (O1) and Drawer Back (O2) with 1 1/4" Flat Head Screws.

STEP 12

Insert Drawer Bottom (O5) into groove.

Attach Supports (O6) to unit with 1 1/4" Flat Head Screws.

Insert 1/2" Round Head Screws into Drawer Bottom (O5).

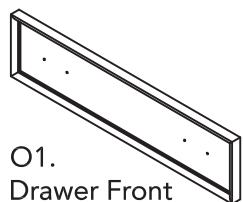


STEP 13

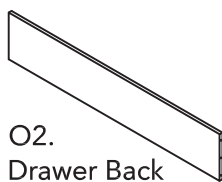
Attach Handles with Machine Screws.

Note: Drawer assembly is not complete until 3/4" Flat Head Screws are used in a later step.

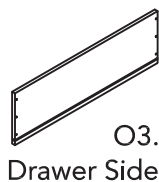
Part List



O1.
Drawer Front
2 pcs



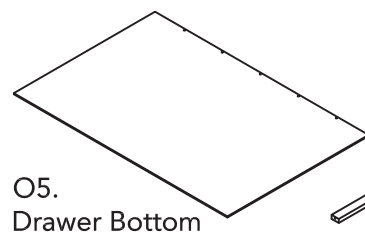
O2.
Drawer Back
2 pcs.



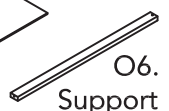
O3.
Drawer Side
2 pcs.



O4.
Drawer Side
2 pcs.



O5.
Drawer Bottom
2 pcs.



O6.
Support
4 pcs.