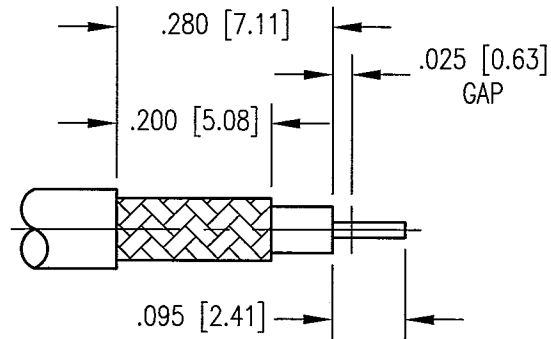
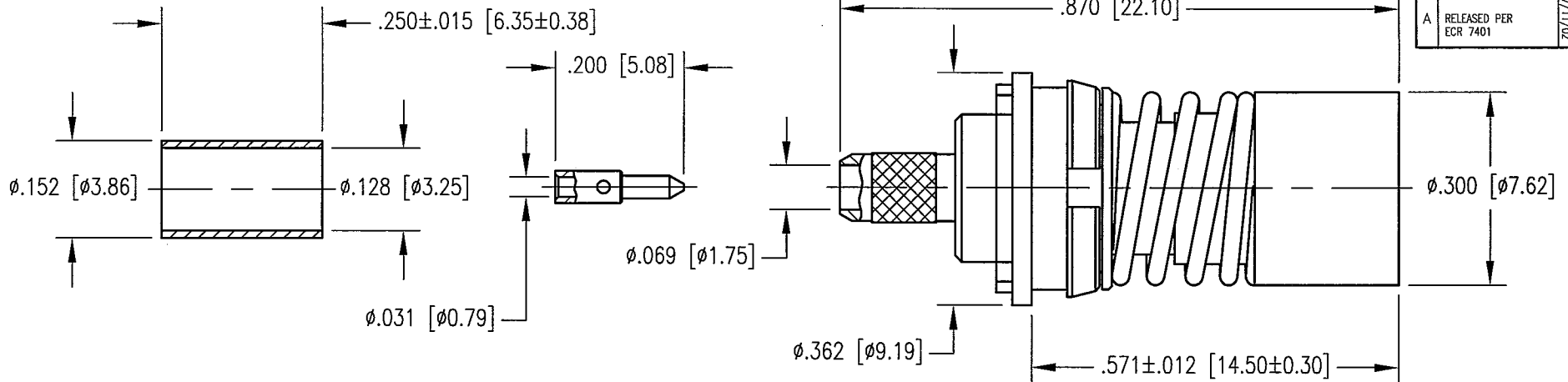
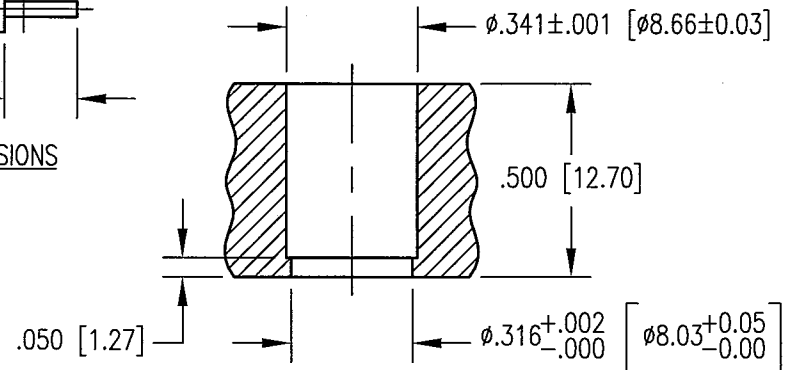


REV	DESCRIPTION	BY DATE	APPD
A	RELEASED PER ECR 7401	JED 7/11/02	JED



CABLE TRIMMING DIMENSIONS



RECOMMENDED MOUNTING HOLE  
(1/2 SCALE)

NOTES:

- MATERIALS:  
 INSULATOR: TEFLON PER ASTM D1710  
 SPRING: MUSIC WIRE PER ASTM A228  
 REAR CONTACT, MOUNTING SLEEVE AND SHROUD: BRASS PER ASTM B16  
 ALL OTHER METAL PARTS: COPPER ALLOY
- FINISH:  
 BODY AND MOUNTING SLEEVE: .000015 MIN. GOLD PER MIL-G-45204 OVER  
 .000050 MIN. NICKEL PER QQ-N-290  
 CONTACTS AND SHROUD: .000030 MIN. GOLD PER MIL-G-45204 OVER  
 .000050 MIN. NICKEL PER QQ-N-290  
 FERRULE AND C-RING: .000005 MIN. GOLD PER MIL-G-45204 OVER  
 .000050 MIN. NICKEL PER QQ-N-290  
 CLIP RING: .000100 MIN. NICKEL PER QQ-N-290  
 OVER COPPER FLASH  
 SPRING: UNPLATED
- DESIGNED FOR USE WITH RG-316 CABLE OR EQUIVALENT.
- FOR CABLING PROCEDURES USE CAP 9-11 WITH TRIMMING DIMENSIONS SHOWN.
- CRIMP FERRULE USING .128 HEX DIE.

PER ASME Y14.5M-1994 UNLESS OTHERWISE SPECIFIED: DIMENSIONS ARE IN INCHES (MM)		<b>NORTHROP GRUMMAN</b>	
TOLERANCES: DECIMALS .xx ± .01 [0.254] .xxx ± .005 [0.127] ANGLES ± 2° SCALE: 4:1		Winchester Electronics 400 Park Road Watertown, CT 06795	
<b>CUSTOMER DRAWING</b>		TITLE BMA STRAIGHT RECEPTACLE (SNAP-FIT)	
DRAWN JEM	DATE 10/4/01	CHECKED MJF	DATE 10/8/01
APPROVED JED	DATE 10/8/01	APPROVED CCA	DATE 10/8/01
A 361-922-0630H		SHT. OF 1 1	REV. A