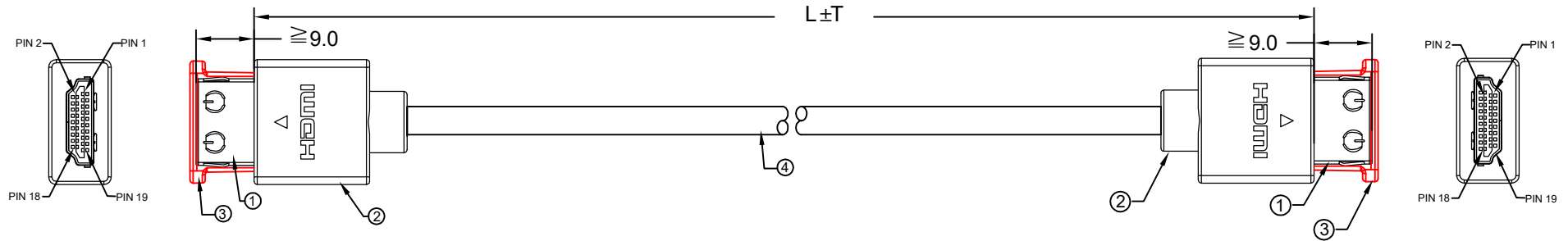


HDS-1.6ST - HDS-8ST



ELECTRIC TESTING:
 1. 100% OPEN & SHORT TESTING
 2. INSULATION RESISTANCE: $\geq 20 \text{ M}\Omega$
 3. CONDUCTOR RESISTANCE: $\leq 3 \Omega$
 4. VOLTAGE: 300V DC/0.1S

Model#	L±T
HDS-1.5ST	500±15 (1.6ft)
HDS-3ST	1000±20 (3ft)
HDS-6ST	1800±30 (6ft)
HDS-8ST	2500±30 (8ft)

ITEM	SPECIFICATION
4	Cable Spec: {[(1/0.203Bc+HDPE)*5P+1/0.203Tc+AL/Mylar]*5+ (1/0.203Bc+HDPE)*4C+Cotton+AL/Mylar+16/11/0.08Tc 85%}*1C OD:5.0 ±0.15mm Jacket=Black PVC with White Text:PREMIUM HIGH SPEED HDMI R(logo) CABLE WITH ETHERNET E148115-D (UL) TYPE CL2 SHIELDED 75°C 32AWG
3	Plastic Cap-Transparent(2312110024)
2	PVC - Black 60P (31401012060 YT-3497 / YT-3498)
1	HDMI Plug - Gold Plated (3033700A9G)