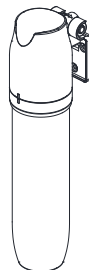
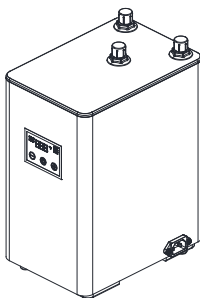
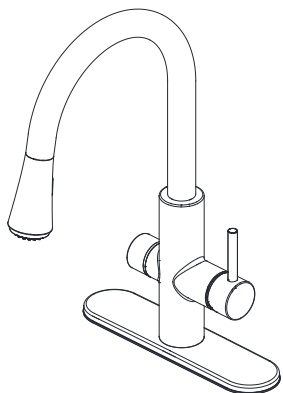




ITEM: KF-AZ401\*\*  
ANZZI 4 IN 1 INSTANT HOT  
WATER DISPENSER SYSTEM  
INSTALLATION & OPERATION MANUAL

V1.0  
03/25/2024



# DON'T WAIT! REGISTER NOW!

Register your product within 90 days to ensure your product is recognized as an official purchase and is eligible for warranty coverage.

Mail in the completed registry card (Pg. 2) or register online at <https://register.anzzihome.com/register/>.



## PRODUCT REGISTRATION\*

**IMPORTANT:** Warranty will not be recognized unless product is registered.

**We offer two options to register your product.**

1. **Register online at** <https://register.anzzihome.com/register/> or Scan the QR code below.  
Registering online is fast, secure, and ensures we receive your information.



2. **Complete, cut out, and mail the registration card below.** Returning this registration card will ensure your product's warranty and allow us to process any warranty claims.

**Mail the card to: 5701 NW 35 Avenue, Miami, FL 33142**



CUT ALONG  
DOTTED LINE.

### Product Registration Card

Name..... Address .....

City.....State..... Zip.....

Phone ..... Email .....

Date of Purchase ..... Order or Purchase # ..... SKU or Model # .....

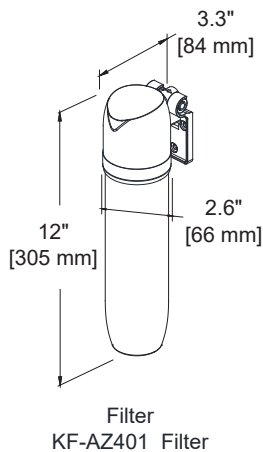
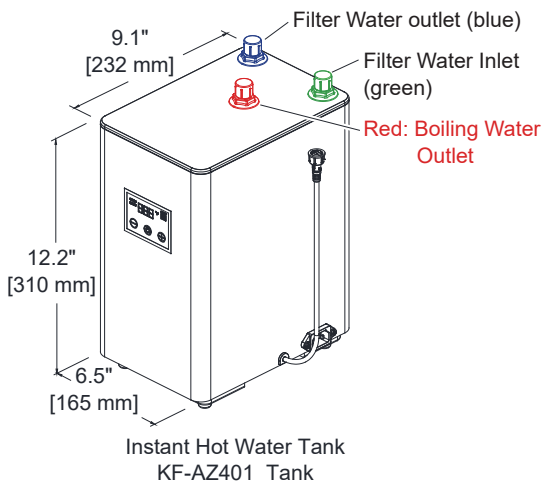
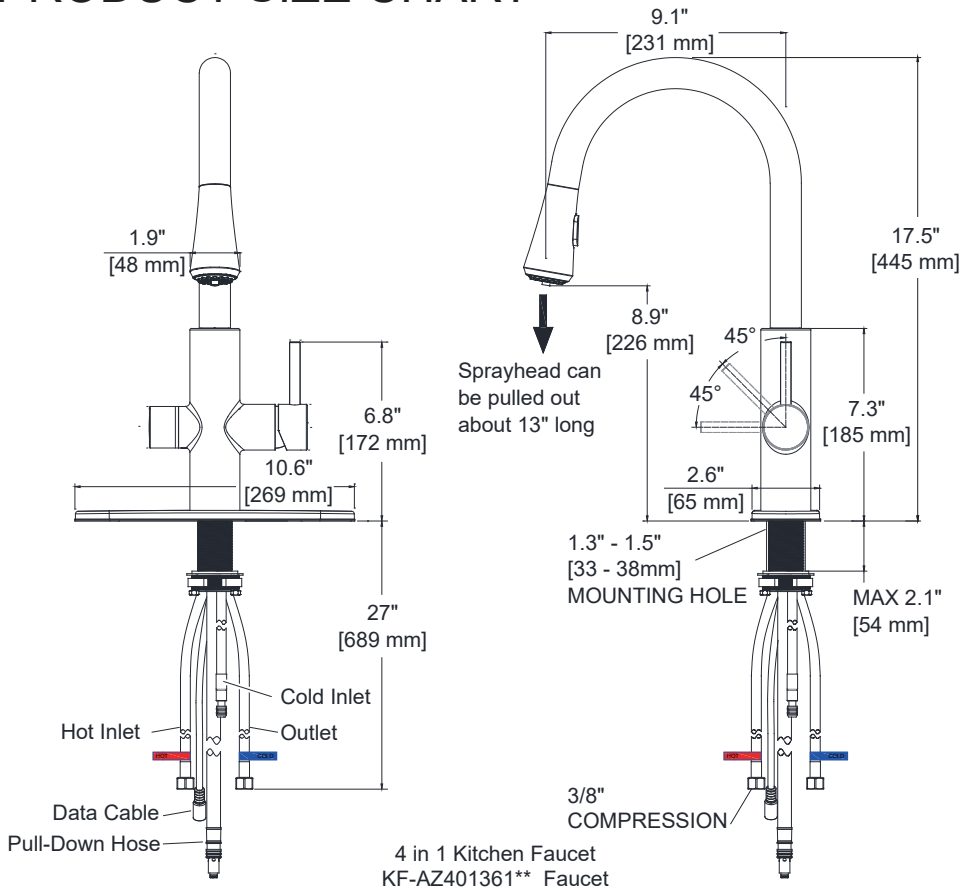
Installer's Name ..... Phone .....

I have read the Owner's Manual carefully and understand and agree that any installation, operation or maintenance of the product must be done strictly in accordance with instructions and guidelines contained in the owner's manual and installation guide.

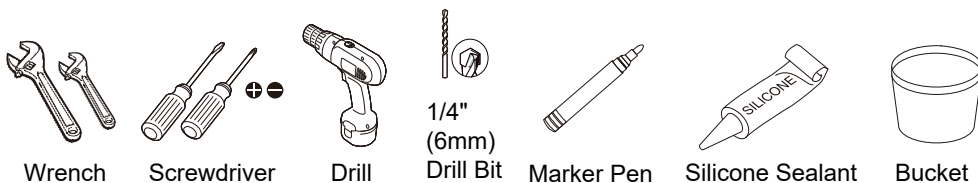
Signature..... Date .....

**Need help? For technical support call 305-614-4070 or visit us at [www.ANZZI.com](http://www.ANZZI.com)**

# PRODUCT SIZE CHART

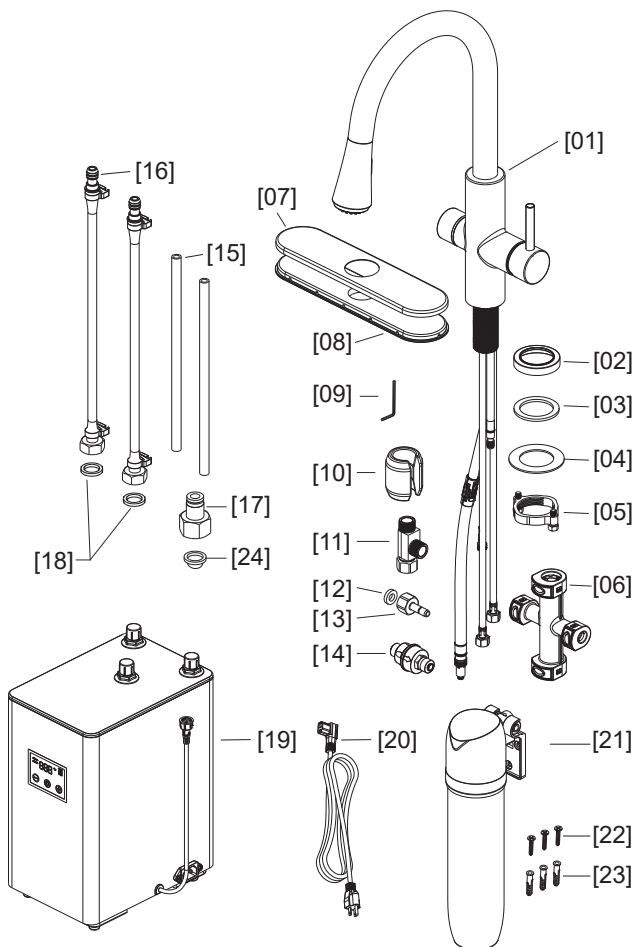


# TOOLS AND MATERIALS



## COMPONENTS

Part	Description	Qty.
[01]	Faucet	1
[02]	Flange	1
[03]	Washer	1
[04]	Metal Washer	1
[05]	Mounting Nut	1
[06]	Cross Connector	1
[07]	Escutcheon	1
[08]	Bracket	1
[09]	Allen Wrench	1
[10]	Weight	1
[11]	T-connector	1
[12]	9/16" Washer	1
[13]	Connector	1
[14]	Pressure Reducing Valve	1
[15]	PEX Tubes (blue)	2
[16]	Hoses	2
[17]	Quick-connector	1
[18]	3/8" Washers	3
[19]	Instant Hot Water Tank	1
[20]	Power Cord	1
[21]	Filters	2
[22]	Screws	6
[23]	Anchors	6
[24]	Gasket	1



### Before installation:

1. Please check that all components are present. There are two filters in the package, one is for installation, another is for replacement.
2. Ensure that all supply lines are free of debris with supply stops installed.
3. Ensure water pressure is between 20-125 PSI.
4. If you are having difficulties on installation, please contact a professional plumber.

## SAFETY PRECAUTIONS

### READ AND SAVE THESE INSTRUCTIONS

#### **WARNING**

TO REDUCE THE RISK OF FIRE, ELECTRIC SHOCK, OR INJURY TO PERSONS, OBSERVE THE FOLLOWING:

- Make sure that all electrical, plumbing and connections conform to local codes.
- A standard, grounded electrical outlet, with continuous supplied power is required under the sink for the tank. A GFCI electrical outlet is recommended.
- Improper grounding can result in a risk of electric shock. Consult a qualified electrician if the grounding instructions are not completely understood, or if doubt exists as to whether the appliance is properly grounded. Do not use an extension cord. If the power supply cord is too short, have a qualified electrician install an outlet near the appliance.
- This outlet must be fused and should not be controlled by the same wall switch that operates the disposer. Fuse/circuit breaker required is 20 amp for 120 volt.
- Connect the filter/instant hot water tank to cold water supply only. The maximum operating water temperature to the filter/instant hot water tank is 100°F (38°C).
- To prevent damage or unit not operating properly, the water pressure must be between 20 psi - 125 psi (140 kPa - 860 kPa). Ambient (room) temperature between 40°F (4°C) and 110°F (43°C).
- If water pressure exceeds 125 psi (860 kPa), pressure limiting valves are needed between the water supplies and the system.
- The use of a water filter should NOT result in the water pressure dropping below 20 psi (140 kPa).
- Do not install where water hammer conditions occur. If water hammer conditions exist, you must install a water hammer arrester.
- To protect from freezing, shut off water supply, remove filter cartridge, drain hot water tank and tubing when temperatures are expected to drop below 40°F (4°C).
- Do not use a torch or other high temperature sources near system, cartridges, plastic fittings or plastic plumbing. Always arrange the power cord so that it cannot come in contact with hot surfaces.
- When drilling into wall, do not damage electrical wiring and other hidden utilities.  
  
Mount system in such a position as to prevent it from being struck by other items used in the area of installation.
- If the instant hot water tank is intended to be secured on the wall, ensure that the location will support the weight of it when installed and full of water.
- To reduce the risk associated with choking: Do not allow children under 3 years of age to have access to small parts during the installation of this product.
- To reduce the risk of electric shock, do not immerse or expose the product, flexible cord or plug to rain, moisture or any liquid or when standing in or on damp or wet surfaces. If any electrical product falls into water, UNPLUG it immediately. DO NOT REACH INTO THE WATER. Prior to reconnecting to the power supply, the product should be inspected by a qualified technician.
- To minimize possibility of fire, DO NOT store flammable items such as rags, paper or aerosol cans near the tank. DO NOT store or use gas or other flammable vapors and liquids in the vicinity of this appliance.
- Manufacturer will not be held liable for any damages resulting from incorrect or improper installation.

## CAUTION

- For indoor use only.
- Electrical installation must be in accordance with the National Electrical Code ANSI/NPA70-latest edition and/or local codes.
- Ensure all tubing and fittings are secure and free of leaks.
- Do not install this system if any of the quick connect collets are missing from the filter head or pressure reducing valve. Contact ANZZI if collets are missing from any fittings.
- Regularly inspect the system. If there are signs of water leakage, turn off the water supply and contact ANZZI.
- To reduce the risk associated with the ingestion of contaminants: Do not use with water that is microbiologically unsafe or of unknown quality without adequate disinfection before or after the system.
- This appliance is not intended for use by persons (including children) with reduced physical, sensory or mental capabilities, or lack of experience and knowledge, unless they have been given supervision or instruction concerning use of the appliance by a person responsible for their safety. Children should be supervised to ensure that they do not play with the appliance.
- Children don't recognize the risks of electrical appliances. Therefore they should use the appliance only under supervision of adults. Keep out of the reach of children.
- The installer should leave these instructions with the consumer who should retain for local inspectors' use and for future reference.
- To avoid possible property damage and personal injury, this hot water tank should be regularly examined for leakage and/or corrosion and replaced when necessary.
- Do not disconnect the product from the power supply by pulling on the cord.
- Regularly inspect dispenser and plumbing fittings for leaks, which can cause property damage and could result in personal injury.
- The use of accessory attachments other than those recommended by the manufacturer may cause safety hazards.
- ANZZI reserves the right to make changes to its products when considered necessary and useful, without affecting the essential safety and operating characteristics.
- Shut of the water supply valve when leaving the house to avoid continuous water pressure on the system.

## NOTICE

- Use this instant hot water tank only for its intended use as described in this manual.
- Always disconnect the power source before working on the tank.
- Make sure that the electric service supply voltage is AC 120V, 60Hz.
- Do not kink the power cord.
- If the supply cord is damaged, call ANZZI for a new one.
- The disposable filter cartridge **MUST** be replaced every 6 months, at the rated capacity or sooner if a noticeable reduction in flow rate occurs.
- Failure to replace the disposable filter cartridge at recommended intervals may lead to reduced filter performance and cracks in the filter housing, causing water leakage or flooding.
- The outlet of the instant hot water tank is required to be vented.

## NOTICE

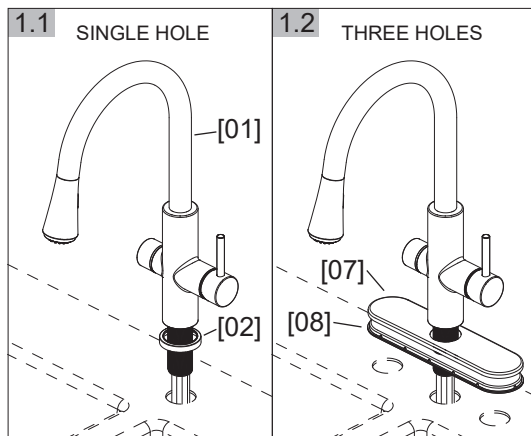
- A drain pan, plumbed to an appropriate drain or outfitted with a leak detector, should be used in those applications where any leakage could cause property damage.
- This product contains stainless steel. ANZZI cannot guarantee against rusty water because of the number of factors that are involved beyond the ANZZI's control. However, the sudden appearance of rusty water discharged from the instant hot water tank may indicate the need for service or replacement of this product.
- Do not operate this product if it has been or appears to be damaged in any manner or after the product malfunctions, or is dropped. Return the complete product immediately to your retailer or dealer for inspection.
- To reduce the risk associated with property damage due to water leakage or flooding, and to ensure optimal performance:
  - a) Read and follow all instructions before installation and use of this system.
  - b) Installation and use **MUST** comply with all state and local plumbing codes.

## INSTALLATION



### WARNING

- Shut down water supplies and power supply at breaker box before starting installation.



### STEP 1

Remove **Mounting Nut [05]**, **Metal Washer [04]** and **Washer [03]** from **Faucet [01]**.

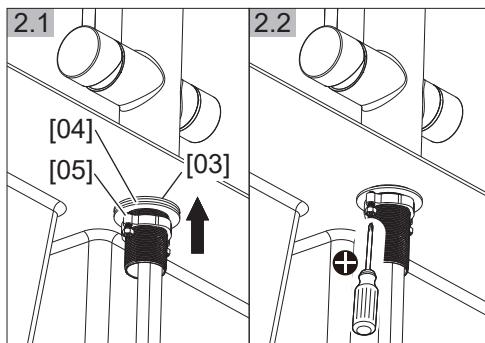
Single hole application: Install **Faucet [01]** and **Flange [02]** through the faucet hole.

Three holes application: Install **Faucet [01]** through **Escutcheon [07]** and **Bracket [08]** through the faucet hole. Adjust the **Escutcheon [07]**.

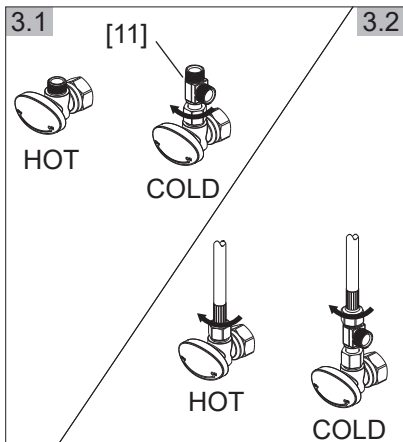
**Note:** Faucet handle should always be on the right-hand side. (fig 1.1, 1.2)

### STEP 2

- 2.1 Slide **Washer [03]**, **Metal Washer [04]** up onto **Faucet [01]** from under the sink and secure with **Mounting Nut [05]**. (fig 2.1)
- 2.2 Hand tighten the **Mounting Nut [05]** and tighten the screws with a screwdriver to secure the faucet. (fig 2.2)



# INSTALLATION



## STEP 3

3.1 Make sure all fittings and end connections are free of debris. Turn off the supply valves (not provided). Connect the **T-connector [11]** to the cold water supply valve, hand tighten them, then tighten with wrench. **DO NOT OVER TIGHTEN.**

3.2 Connect inlet hoses of **Faucet [01]** to the hot water supply valve and **T-connector [11]** as figure shows. Make sure the red braided hose with "HOT" label is connected to the hot water supply valve and the blue braided hose with "COLD" label is connected to the

**T-connector [11]**. Hand tighten them, then tighten with wrench.

**DO NOT OVER TIGHTEN.**

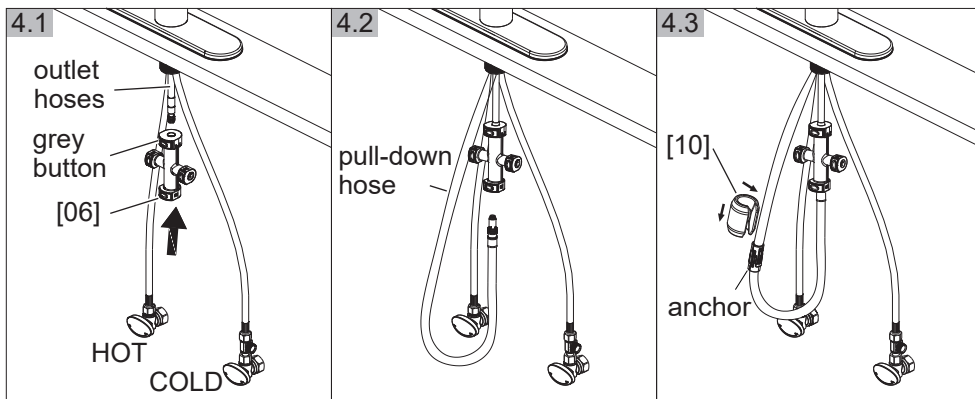
**WARNING:** Do not use pipe dope or other sealants on water connections.

## STEP 4

4.1 Connect the **Cross Connector [06]** to the outlet hose (the shortest one) under the sink, as the picture shows. Push in until a "click" sound is heard. Ensure the end of **Cross Connector [06]** with **grey button** connects to the outlet hose. (fig 4.1)

4.2 Connect the **pull-down hose** to the end of **Cross Connector [06]** as figure shows. Tug the **pull-down hose** downward to ensure it's connected firmly. (fig 4.2)

4.3 Slid the **Weight [10]** onto the **pull-down hose** and push it downward to the **anchor** until it stops as figure shows. Shake the **Weight [10]** to make sure it is secured. (fig 4.3)

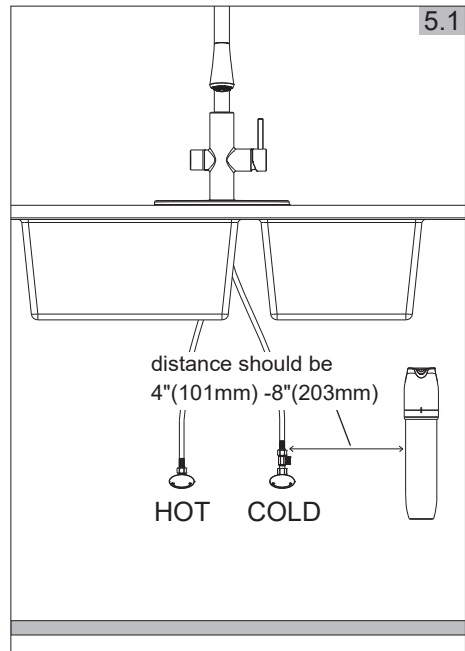
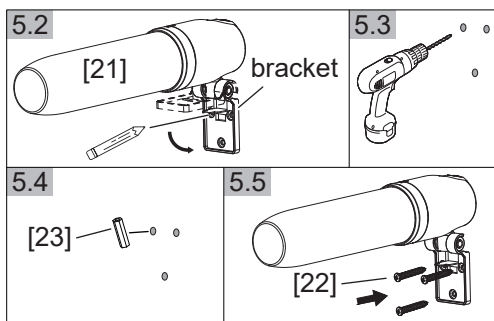




# INSTALLATION

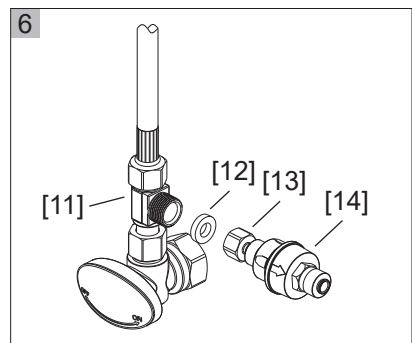
## STEP 5

- 5.1 Place the **Filter [21]** next to the cold water supply valve and mark the screw holes as figure shows. (fig 5.1)
- 5.2 Remove the **Filter [21]** and drill 1/8" pilot holes at each marked location if drilling into wood material. Drill 1/4" holes at each marked location if drilling into tile material and insert the **Anchors [23]**. (fig 5.2, fig 5.3, fig 5.4)
- 5.4 Secure the bracket of the **Filter [21]** with **Screws [22]**. (fig 5.5)

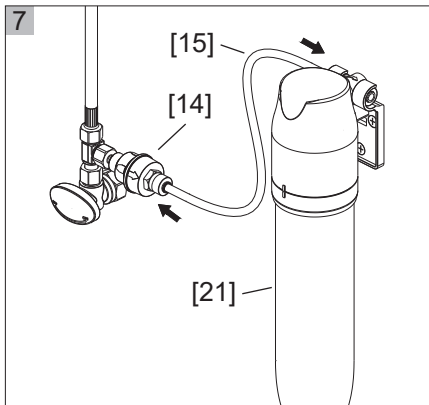


## STEP 6

- 6.1 Connect the **Connector [13]** (**Connector [13]** and **Pressure Reducing Valve [14]** are pre-assembled together) and 9/16" Washer [12] to the **T-connector [11]**, hand tighten it, then tighten with wrench. **DO NOT OVER TIGHTEN.** (fig 6)



# INSTALLATION



## STEP 7

Connect a PEX Tube (blue) [15] to the Pressure Reducing Valve [14] and Filter [21]. Push one end of PEX Tube (blue) [15] into the outlet of Pressure Reducing Valve [14] until it stops. Push the other end of PEX Tube (blue) [15] into the inlet from the left of Filter [21] until it stops.

Note: Hold the Pressure Reducing Valve [14] and pull the PEX Tube (blue) [15] to make sure the tube is secured. Check the connection between the PEX Tube (blue) [15] and Filter [21] in the same way. (fig 7)

## STEP 8

The Instant Hot Water Tank can be seated on the floor or hung on the wall. (The screws and anchors for this installation aren't provided.)

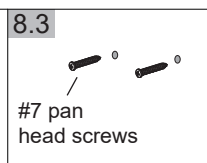
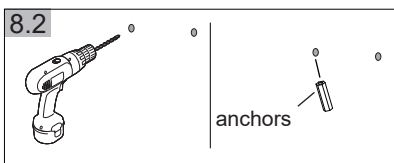
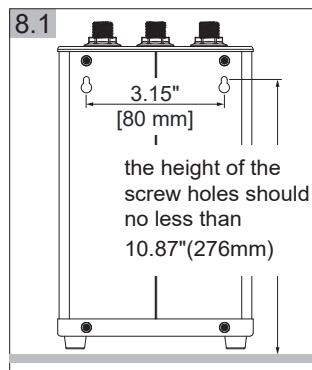
Hang the tank on the wall by following steps below:

8.1 Mark the screw holes by referring to the measurements of the figure on the right. (fig 8.1)

8.2 Drill 1/8" pilot holes at each marked location if drilling into wood material. Drill 1/4" holes at each marked location if drilling into tile material and insert the anchors. (fig 8.2, 8.3)

8.3 Install two #7 pan head screws to wood or anchors for hanging the tank as fig 8.3 shows. Make sure to leave the screw heads out roughly 1/4" from the wall in order to mount the tank.

8.4 Hang the tank on the screws.



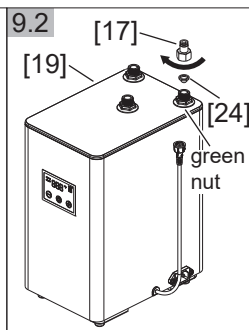
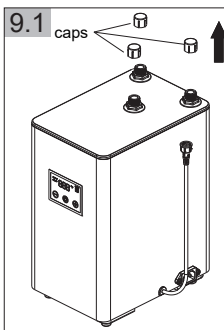
## STEP 9

9.1 Remove the caps from the Instant Hot Water Tank [19]. (fig 9.1)

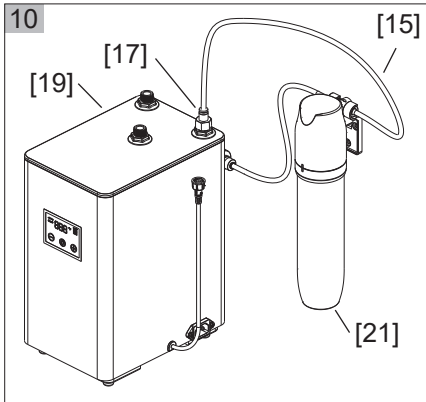
9.2 Install the Quick-connector [17] and Gasket [24] to the shank secured with green nut. Hand tighten it, then tighten with wrench.

**DO NOT OVER TIGHTEN.** (fig 9.2)

Note: Make sure the dome of Gasket [24] faces to the shank. It's better to keep the washers inside the caps as spare parts.



# INSTALLATION



## STEP 10

Connect a PEX Tube (blue) [15] to the **Instant Hot Water Tank [19]** and **Filter [21]**. Push one end of PEX Tube (blue) [15] into the **Quick-connector [17]** until it stops. Push the other end of PEX Tube (blue) [15] into the outlet from the right of **Filter [21]** until it stops.

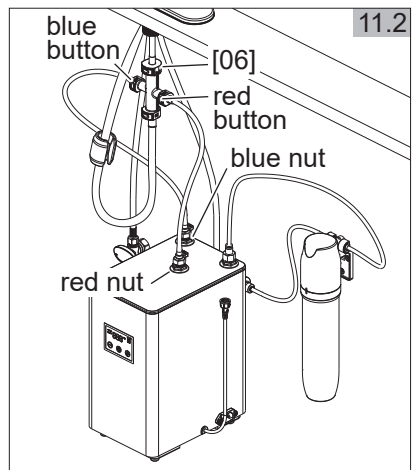
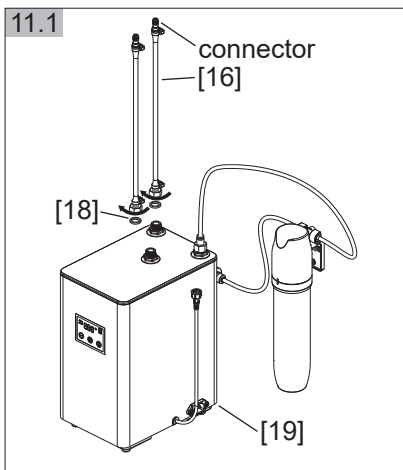
Note: Hold the **Filter [21]** and pull the **PEX Tube (blue) [15]** to make sure the tube is secured. Check the connection between the **PEX Tube (blue) [15]** and **Quick-connector [17]** in the same way. (fig 10)

## STEP 11

11.1 Install the **Hoses [16]** and **3/8" Washers [18]** to the shank secured with **red nut** and **blue nut**. Hand tighten them, then tighten with wrench.

**DO NOT OVER TIGHTEN.** (fig 11.1)

11.2 Push the **connectors** of the **Hoses [16]** into the **Cross Connector [06]** until they stop and a "click" sound is heard. The **Hose [16]** connecting to the shank secured with **blue nut** connects to the side of **Cross Connector [06]** with **blue button**. The **Hose [16]** connecting to the shank secured with the **red nut** connects to the side of the **Cross Connector [06]** with the **red button**. Pull the connectors to make sure they are secured. (fig 11.2)

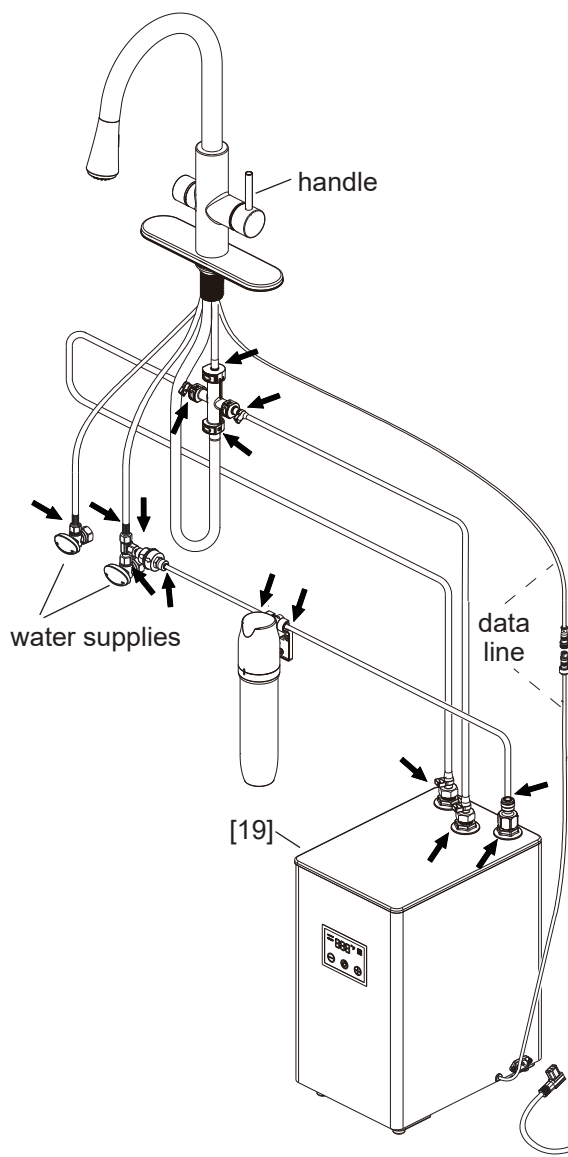


# INSTALLATION

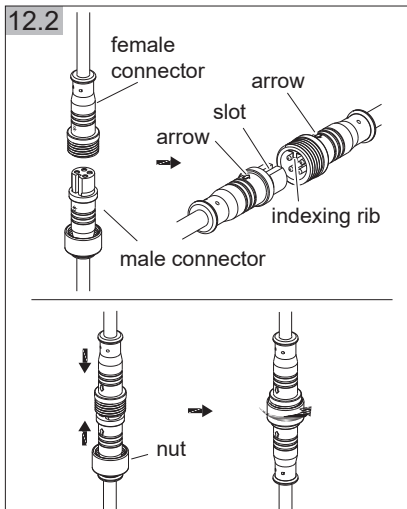
## STEP 12

12.1 After installation is complete, turn cold / hot water supplies back on. Open the faucet handle, let the water flow and check all connections at arrows for any leaks. (fig 12.1)

12.1



12.2



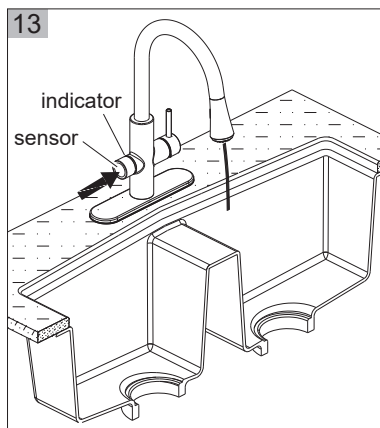
12.2 Connect the data line between **Faucet [01]** and **Instant Hot Water Tank [19]**. Align the **slot** of **male connector** with the **indexing rib** of **female connector** and push them together. Tighten the **nut** with **female connector** to secure. (fig 12.2)

12.3 Plug the **Power Cord [20]** to the **Instant Hot Water Tank [19]** and the **power supply** as figure shows. Power on the **Instant Hot Water Tank [19]**. (fig 12.1)

# INSTALLATION

## STEP 13

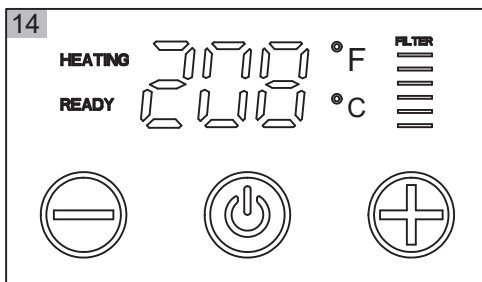
- When the **Instant Hot Water Tank [19]** is powered **on**, the screen of it will display E3 to indicate there isn't sufficient water in the tank.
- Press the **sensor** to turn on the filtered water. The **indicator** lights up in blue color. There should be water flowing out. It would be normal if there is black water (The black material in the water is a small amount of carbon powder coming from the filter.) flowing out for the first time use. Let the water flow until the water is clear. Press the **sensor** again to stop the water.
- Press and hold the **sensor**. The **indicator** gradually lights up in red color until the whole ring is lighted. Continue to press the **sensor** for about 1 minute until there is water coming out from the spout. Then move your hand away to stop the flowing water. If the screen still display E3, power the tank off and contact ANZZI.
- Check the connections of this system down below the sink for leaks.



# OPERATION

## INSTANT HOT WATER TANK

- 1) After pressing and holding the **sensor** until water flows from the spout, the screen should flash . Press for 2 seconds to turn on the tank.
- 2) Press or to increase or reduce hot water temperature between 167°F (75°C), 176°F (80°C), 185°F (85°C), 194°F (90°C), 203°F (95°C), 206°F (97°C) and 208°F (98°C).
- 3) When the screen shows " HEATING ", it means the tank is heating water. When the water is heated to the pre-set temperature, the " HEATING " disappears and the screen shows " READY ". The figure in the middle of screen is the water temperature. Long press and to switch the temperature between °F and °C.
- 4) Indicates the time of filter use. When the time exceeds 6 months, the yellow and the last white line will disappear at the same time. The red flashes successively to remind the user to replace the filter. At the same time, the tank will beep 6 times. It will remind you again after 1 hour. When the user finishes replacing the filter, press and hold and for 3 seconds to restore the filter using time.

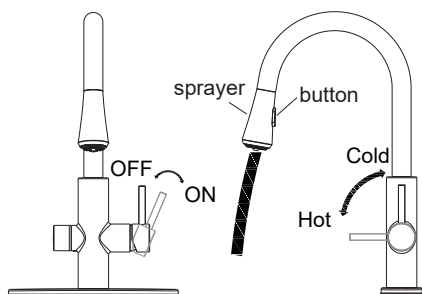


# OPERATION

## ⚠ WARNING

- The boiling point of water can vary due to altitude. The highest pre-set temperature of the tank must be lower than the actual boiling point to avoid continuously boiling of water in the tank.

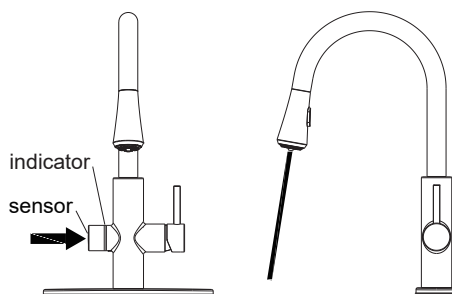
## FAUCET



15.1

### REGULAR HOT & COLD

- Turn the handle on in the vertical position for **Cold Water**.
- Turn the handle on and forward to increase the temperature of water.
- Turn the handle on and forward to the horizontal position for **Hot Water**.
- The sprayer will be on flow mode when faucet is turned on. Press the button to switch to spray mode. The sprayer will switch back to flow mode automatically when the faucet is turned off.



15.2

### FILTERED WATER

- Press the sensor to start the filtered water. The indicator lights up in blue color. Press again to stop.
- The filtered water will stop automatically after 1 minute.

Notice: Do not turn on the cold water when filling filtered water.

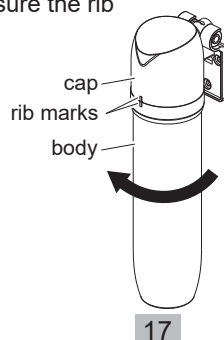
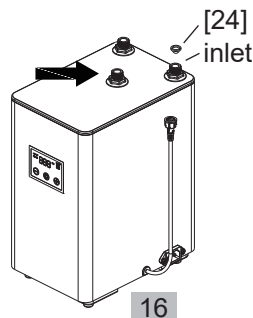
### BOILING WATER

- Press and hold the **sensor**. The **indicator** gradually lights up in red color until the whole ring is lightened. The hot water will soon come out from the spout. Move your hand away to stop the flowing water.

Notice: If the hot water is not hot enough, please check that the pre-set water temperature is correct. If the tank shows "HEATING", please wait until "HEATING" disappears and the screen shows "READY".

# CLEANING & MAINTENANCE

1. To preserve the finish on the metallic parts of your ANZZI faucet, apply non-abrasive wax, such as car wax. Rinse off any cleaners immediately.
2. Clean the aerator regularly for calcium build-up or any blockage that reduces water flow.
3. To prolong the life of instant hot water tank, clean the tank every 6 months or year to avoid limescale build-up inside the tank.
  - a. Remove the tank and pour out the water by turning it upside down. Check and clean the **Gasket [24]** at the **inlet**.
  - b. Add in white vinegar from the hot water outlet of the tank indicated by the arrow at the figure on the right. Leave the vinegar to soak for 60 minutes. Then pour all the water out from the tank and install it back to the system.
  - c. Operate the sensor to fill the tank. Keep pressing the sensor until 3 liters has flowed out to clean all vinegar inside the tank. (fig 16)
4. Replace the water filter every 6 months. Turn the body of the filter as figure shows and pull downward to remove it and install a new one. Make sure the rib marks of the cap and body align after installation. Or replace the whole filter. (fig 17)



# LONG-TERM PRESERVATION

If the system is not being used for a long time, or if the temperature is 39.2°F or lower.

1. Close the water supply valves and unplug this system.
2. Disconnect the **hot/cold supply hoses** and **pull-down hose** to drain the water inside the faucet.
3. Disconnect the tank and pour out the water inside it.
4. Turn the body of the filter and pull downward to remove it and pour out the water inside it.
5. Reinstall all the parts. Check all the connections for leaks when using the system again.

# TROUBLE SHOOTING

Symptoms	Possible Causes	Recommended Action
Screen of the tank shows E3.	Not sufficient water inside the tank.	Keep pressing the sensor until water flows out.
Screen of the tank shows E4.	There is short circuit on the temperature sensor.	Contact ANZZI.
Screen of the tank shows E5.	The water temperature inside the tank increases very slowly.	Contact ANZZI.
Screen of the tank shows E6.	The water temperature inside the tank is overheated.	Contact ANZZI.

# TROUBLE SHOOTING

Symptoms	Possible Causes	Recommended Action
Screen of the tank shows E7.	Temperature sensor is damaged.	Contact ANZZI.
Screen of the tank shows E8.	The water temperature inside the tank is overheated.	Contact ANZZI.
Screen of the tank shows E9.	Water temperature too low ( $\leq 32^{\circ}\text{F}$ ).	Power off the tank and drain the water inside or raise the temperature of incoming water.
There are leaks from the handle.	The cartridge is damaged.	Replace the cartridge.
The water can not be shut off completely.		
There is no flow or a low water flow.	The spray head is dirty.	Remove and clean the spray head. Replace it if needed.
	The water supply valves aren't turned on.	Check the water supply valves.
	The hoses are twisted or kinked.	Check the hoses and adjust it.
Water and Steam is spitting from the instant hot water faucet spout.	The water inside the tank is close to the boiling temperature.	The spitting should stop soon. No action is needed.
	The altitude is high for the system.	Adjust the water temperature on the display to a lower setting.
Water is not hot.	The system is powered off.	Make sure system is properly connected to the power supply and there is power at the socket.
	The heater of the tank is damaged.	Contact ANZZI.
Water is too hot.	Pre-set temperature is high.	Re-set the temperature to the desired temperature.
The filtered or hot water flow is low.	Water filter is clogged.	The water filter must be changed every 6 months.
Hot water does not flow instantly.	There is not enough water in the tank.	Wait a little for the water.

