

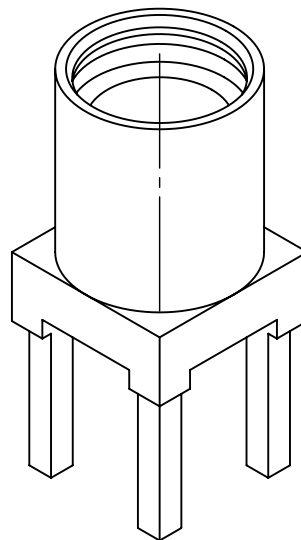
NOTES: UNLESS OTHERWISE SPECIFIED
1. FOR GENERAL SERIES SPECIFICATIONS, SEE SD47-0000.

2. MATERIALS AND FINISHES:
BODY: BRASS PER ASTM B16, GOLD 15 MICRO OVER COPPER
CONTACT: COPPER ALLOY, GOLD 30 MICRO OVER COPPER
INSULATOR: PTFE PER ASTM D1710

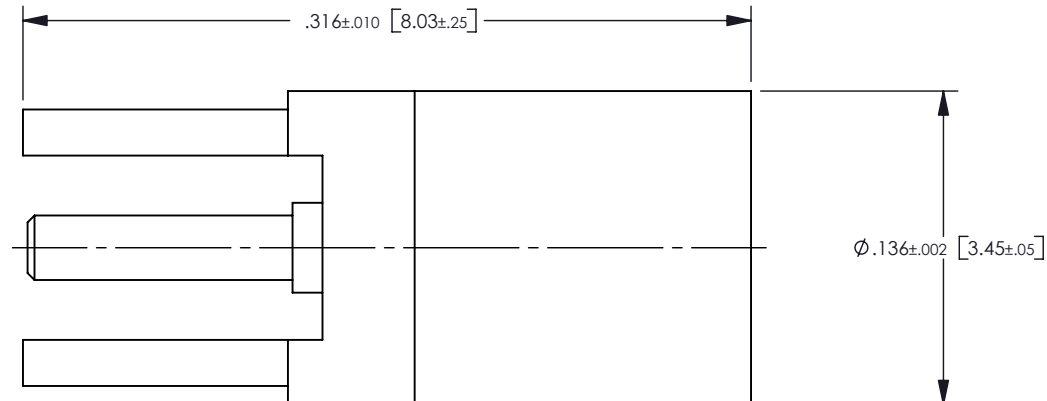
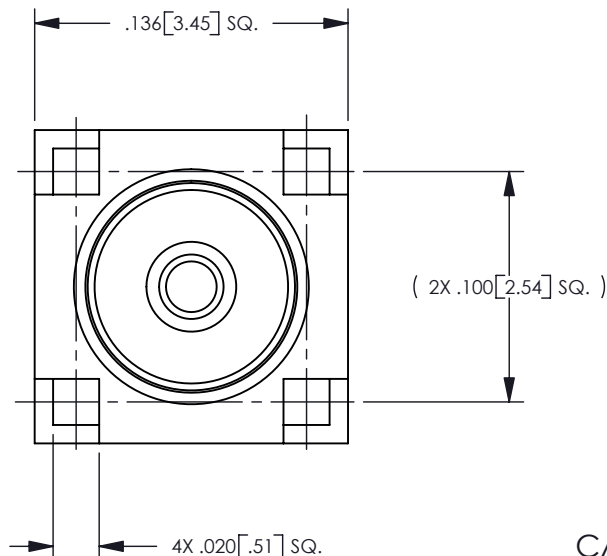
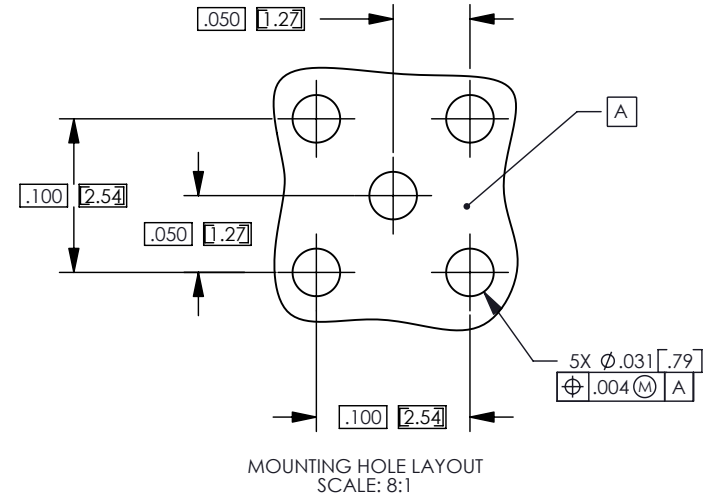
3. ELECTRICAL SPECIFICATIONS:
IMPEDANCE: 50 OHM
FREQUENCY: DC - 6 GHZ
VSWR: 1.25+ .03F
CONTACT RESISTANCE:
CENTER: 5 MILLIOHMS
OUTER: 2.5 MILLIOHMS

4. MECHANICAL:
ENGAGEMENT FORCE: 3.4 LBS MAX.
DISENGAGEMENT FORCE: 1.4 MIN.
DURABILITY: 500 CYCLES.

REV	DESCRIPTION	BY DATE	APPD
A	EW06-413	PSM 09/13/06	DCam



ISOMETRIC VIEW
SCALE: 8:1



CATALOG P/N: 471-040-0040J

PER ASME Y14.5M-1994 UNLESS OTHERWISE SPECIFIED: DIMENSIONS ARE IN INCHES [MM] TOLERANCES: DECIMAL: .XX [X.X] ± .01 [0.3] .XXX [X.XX] ± .005 [0.13] .XXXX [X.XXX] ± .XXXX ANGLES: ± 2° SCALE: 12:1				 Winchester Electronics Corporation 62 Barnes Industrial Road North Wallingford, Connecticut 06492	
CUSTOMER DRAWING		 MMCX PCB STRAIGHT RECEPTACLE			
DRAWN PSM	DATE 09/13/06	APPROVED DCam	DATE 09/13/06		
APPROVED R.L.	DATE 09/13/06	APPROVED M.AYUB	DATE 09/13/06		
A SD471-040-0040J				SHT 1 OF 1	REV A