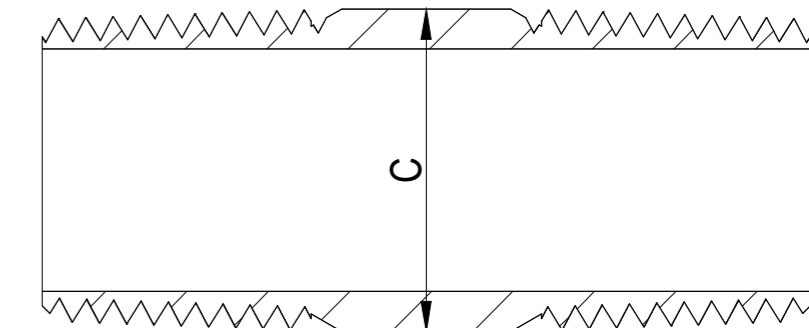
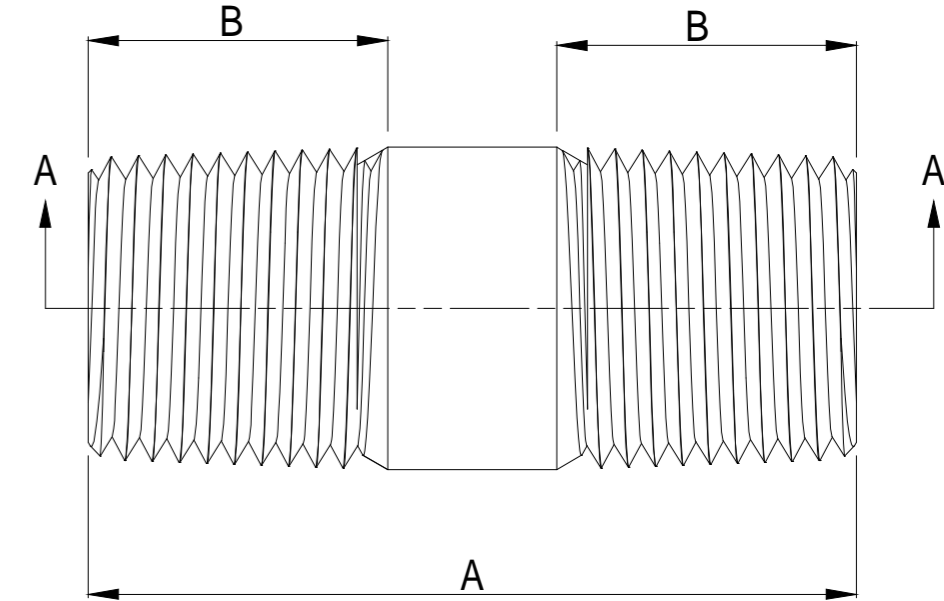
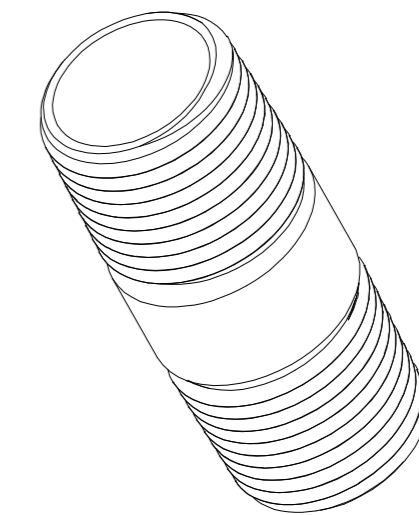


ITEM	THREAD	TOTAL LENGTH/A	THREAD LENGTH/B	OD/C	STANDARD PACKING	ITEM	THREAD	TOTAL LENGTH/A	THREAD LENGTH/B	OD/C	STANDARD PACKING
RN50150	1/2"NPT	1-1/2"	0.709"-0.780"	0.839"+/-0.0150"	25	RN200300	2"NPT	3"	0.972"-1.059"	2.374"+/-0.0237"	25
RN50200	1/2"NPT	2"	0.709"-0.780"	0.839"+/-0.0150"	25	RN200400	2"NPT	4"	0.972"-1.059"	2.374"+/-0.0237"	25
RN50300	1/2"NPT	3"	0.709"-0.780"	0.839"+/-0.0150"	25	RN200500	2"NPT	5"	0.972"-1.059"	2.374"+/-0.0237"	25
RN50400	1/2"NPT	4"	0.709"-0.780"	0.839"+/-0.0150"	25	RN200600	2"NPT	6"	0.972"-1.059"	2.374"+/-0.0237"	25
RN50500	1/2"NPT	5"	0.709"-0.780"	0.839"+/-0.0150"	25	RN200800	2"NPT	8"	0.972"-1.059"	2.374"+/-0.0237"	12
RN50600	1/2"NPT	6"	0.709"-0.780"	0.839"+/-0.0150"	25	RN2001000	2"NPT	10"	0.972"-1.059"	2.374"+/-0.0237"	10
RN50800	1/2"NPT	8"	0.709"-0.780"	0.839"+/-0.0150"	25	RN2001200	2"NPT	12"	0.972"-1.059"	2.374"+/-0.0237"	10
RN501000	1/2"NPT	10"	0.709"-0.780"	0.839"+/-0.0150"	25	RN250300	2-1/2"NPT	3"	1.446"-1.571"	2.874"+/-0.0287"	10
RN501200	1/2"NPT	12"	0.709"-0.780"	0.839"+/-0.0150"	25	RN250400	2-1/2"NPT	4"	1.446"-1.571"	2.874"+/-0.0287"	10
RN75150	3/4"NPT	1-1/2"	0.720"-0.791"	1.051"+/-0.0150"	25	RN250500	2-1/2"NPT	5"	1.446"-1.571"	2.874"+/-0.0287"	10
RN75200	3/4"NPT	2"	0.720"-0.791"	1.051"+/-0.0150"	25	RN250600	2-1/2"NPT	6"	1.446"-1.571"	2.874"+/-0.0287"	10
RN75300	3/4"NPT	3"	0.720"-0.791"	1.051"+/-0.0150"	25	RN250800	2-1/2"NPT	8"	1.446"-1.571"	2.874"+/-0.0287"	10
RN75400	3/4"NPT	4"	0.720"-0.791"	1.051"+/-0.0150"	25	RN2501000	2-1/2"NPT	10"	1.446"-1.571"	2.874"+/-0.0287"	5
RN75500	3/4"NPT	5"	0.720"-0.791"	1.051"+/-0.0150"	25	RN2501200	2-1/2"NPT	12"	1.446"-1.571"	2.874"+/-0.0287"	5
RN75600	3/4"NPT	6"	0.720"-0.791"	1.051"+/-0.0150"	25	RN300300	3"NPT	3"	1.466"-1.630"	3.500"+/-0.0350"	10
RN75800	3/4"NPT	8"	0.720"-0.791"	1.051"+/-0.0150"	25	RN300400	3"NPT	4"	1.466"-1.630"	3.500"+/-0.0350"	10
RN751000	3/4"NPT	10"	0.720"-0.791"	1.051"+/-0.0150"	25	RN300500	3"NPT	5"	1.466"-1.630"	3.500"+/-0.0350"	10
RN751200	3/4"NPT	12"	0.720"-0.791"	1.051"+/-0.0150"	25	RN300600	3"NPT	6"	1.466"-1.630"	3.500"+/-0.0350"	10
RN100200	1"NPT	2"	0.894"-0.980"	1.315"+/-0.0150"	25	RN300800	3"NPT	8"	1.466"-1.630"	3.500"+/-0.0350"	5
RN100300	1"NPT	3"	0.894"-0.980"	1.315"+/-0.0150"	25	RN3001000	3"NPT	10"	1.466"-1.630"	3.500"+/-0.0350"	5
RN100400	1"NPT	4"	0.894"-0.980"	1.315"+/-0.0150"	25	RN3001200	3"NPT	12"	1.466"-1.630"	3.500"+/-0.0350"	1
RN100500	1"NPT	5"	0.894"-0.980"	1.315"+/-0.0150"	25	RN350400	3-1/2"NPT	4"	1.517"-1.681"	4.000"+/-0.0400"	6
RN100600	1"NPT	6"	0.894"-0.980"	1.315"+/-0.0150"	25	RN350500	3-1/2"NPT	5"	1.517"-1.681"	4.000"+/-0.0400"	5
RN100800	1"NPT	8"	0.894"-0.980"	1.315"+/-0.0150"	25	RN350600	3-1/2"NPT	6"	1.517"-1.681"	4.000"+/-0.0400"	3
RN1001000	1"NPT	10"	0.894"-0.980"	1.315"+/-0.0150"	25	RN350800	3-1/2"NPT	8"	1.517"-1.681"	4.000"+/-0.0400"	3
RN1001200	1"NPT	12"	0.894"-0.980"	1.315"+/-0.0150"	25	RN3501000	3-1/2"NPT	10"	1.517"-1.681"	4.000"+/-0.0400"	3
RN125200	1-1/4"NPT	2"	0.925"-1.012"	1.661"+/-0.0150"	25	RN3501200	3-1/2"NPT	12"	1.517"-1.681"	4.000"+/-0.0400"	1
RN125300	1-1/4"NPT	3"	0.925"-1.012"	1.661"+/-0.0150"	25	RN400400	4"NPT	4"	1.564"-1.728"	4.500"+/-0.0450"	6
RN125400	1-1/4"NPT	4"	0.925"-1.012"	1.661"+/-0.0150"	25	RN400500	4"NPT	5"	1.564"-1.728"	4.500"+/-0.0450"	5
RN125500	1-1/4"NPT	5"	0.925"-1.012"	1.661"+/-0.0150"	25	RN400600	4"NPT	6"	1.564"-1.728"	4.500"+/-0.0450"	5
RN125600	1-1/4"NPT	6"	0.925"-1.012"	1.661"+/-0.0150"	25	RN400800	4"NPT	8"	1.564"-1.728"	4.500"+/-0.0450"	3
RN125800	1-1/4"NPT	8"	0.925"-1.012"	1.661"+/-0.0150"	25	RN4001000	4"NPT	10"	1.564"-1.728"	4.500"+/-0.0450"	3
RN1251000	1-1/4"NPT	10"	0.925"-1.012"	1.661"+/-0.0150"	25	RN4001200	4"NPT	12"	1.564"-1.728"	4.500"+/-0.0450"	1
RN1251200	1-1/4"NPT	12"	0.925"-1.012"	1.661"+/-0.0150"	25						
RN150200	1-1/2"NPT	2"	0.945"-1.031"	1.902"+/-0.0150"	25						
RN150300	1-1/2"NPT	3"	0.945"-1.031"	1.902"+/-0.0150"	25						
RN150400	1-1/2"NPT	4"	0.945"-1.031"	1.902"+/-0.0150"	25						
RN150500	1-1/2"NPT	5"	0.945"-1.031"	1.902"+/-0.0150"	25						
RN150600	1-1/2"NPT	6"	0.945"-1.031"	1.902"+/-0.0150"	25						
RN150800	1-1/2"NPT	8"	0.945"-1.031"	1.902"+/-0.0150"	25						
RN1501000	1-1/2"NPT	10"	0.945"-1.031"	1.902"+/-0.0150"	25						
RN1501200	1-1/2"NPT	12"	0.945"-1.031"	1.902"+/-0.0150"	25						

Material: Steel C1008-C1008 Hot dipped galvanized



VIEW A-A



This data sheet is for reference only .GARVIN INDUSTRIES reserves the right to make changes to the design without prior notice.

GARVIN INDUSTRIES		
RIGID COND NIPPLE		
SIZE A4	DWG NO. DS-RN-XXXX	REV