

NOTES: UNLESS OTHERWISE SPECIFIED
 1. FOR USE WITH .085", .086" CABLE OR EQUIVALENT.

2. MATERIAL SPECIFICATIONS:
 RETAINING RING: BERYLLIUM COPPER
 INSULATOR: PTFE
 ALL OTHER METAL PARTS: BRASS

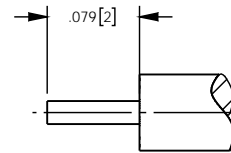
3. FINISH SPECIFICATIONS:
 CONTACT: .000003 MIN GOLD OVER .000050 MIN NICKEL
 ALL OTHER METAL PARTS: THIN GOLD OVER .000050 MIN NICKEL

4. ELECTRICAL SPECIFICATIONS:
 IMPEDANCE: 50 OHMS
 FREQUENCY RANGE: DC - 6.0 GHz

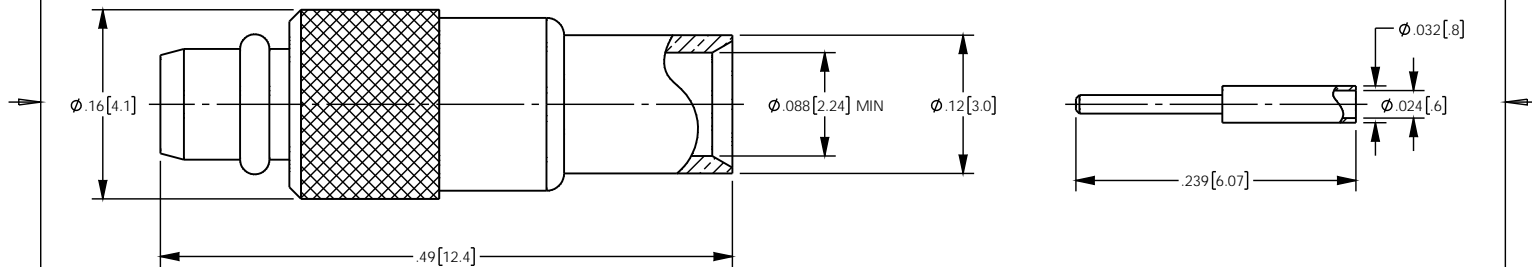
5. CONTACT SHIPPED LOOSE.

6. SOLDER CONTACT.

REV	DESCRIPTION	BY DATE	APPD
A	ER064659	JL 09/08/16	DCAM



RECOMMENDED CABLE STRIPPING DIMENSIONS



CATALOG P/N: 1320A204-405

<small>PER ASME Y14.5M-1994 UNLESS OTHERWISE SPECIFIED, DIMENSIONS ARE IN INCHES (MM) TOLERANCES: DECIMAL: .XX [XX] ± .01 [0.3] .XXX [X.XX] ± .005 [0.13] .XXXX [X.XXXX] ± .XXXX</small>				 <small>by WINCHESTER Winchester Electronics Corporation 199 Park Road Ext Suite 104 Middlebury, Connecticut, 06762</small>					
<small>ANGLES: ± 2° SCALE: 8:1</small>				CUSTOMER SALES DRAWING				MMCX STRAIGHT DIRECT SOLDER PLUG (FOR .085", .086")	
<small>DRAWN</small>	<small>DATE</small>	<small>APPROVED</small>	<small>DATE</small>	<small>DRAWN</small>	<small>DATE</small>	<small>APPROVED</small>	<small>DATE</small>	<small>REV</small>	<small>CF</small>
JL	09/08/2016	JL	09/13/2016	JL	09/13/2016	JL	09/13/2016	A	1
<small>DCAM</small>	<small>09/08/16</small>	<small>XXX</small>	<small>XX/XX/XX</small>	<small>DCAM</small>	<small>09/08/16</small>	<small>XXX</small>	<small>XX/XX/XX</small>		
A SD1320A204-405								<small>SHT</small>	<small>OF</small>
								1	1