




ASSEMBLY INSTRUCTION

Item: 6850-80251-89 Console Table



Thank you for purchasing this quality product. Be sure to unpack carefully looking for small parts which may have come loose during shipment.

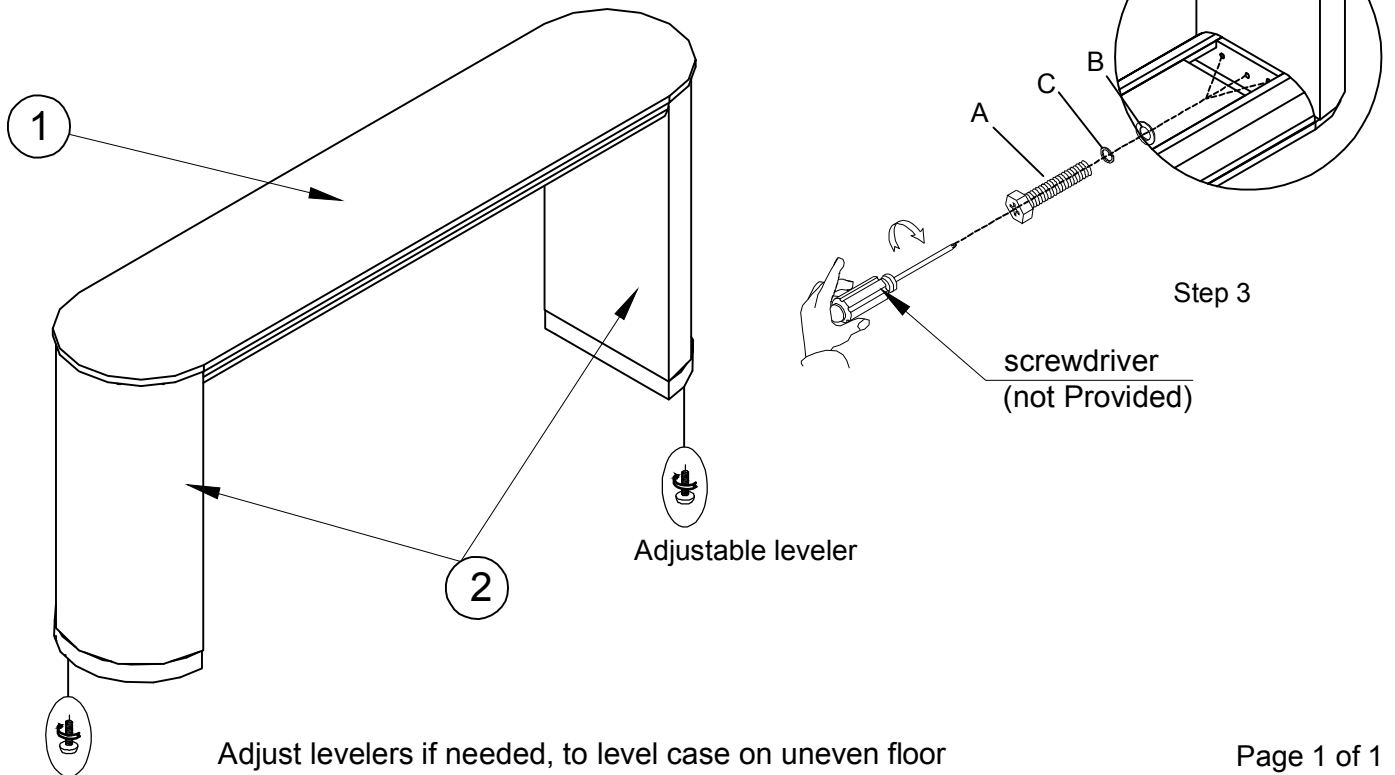
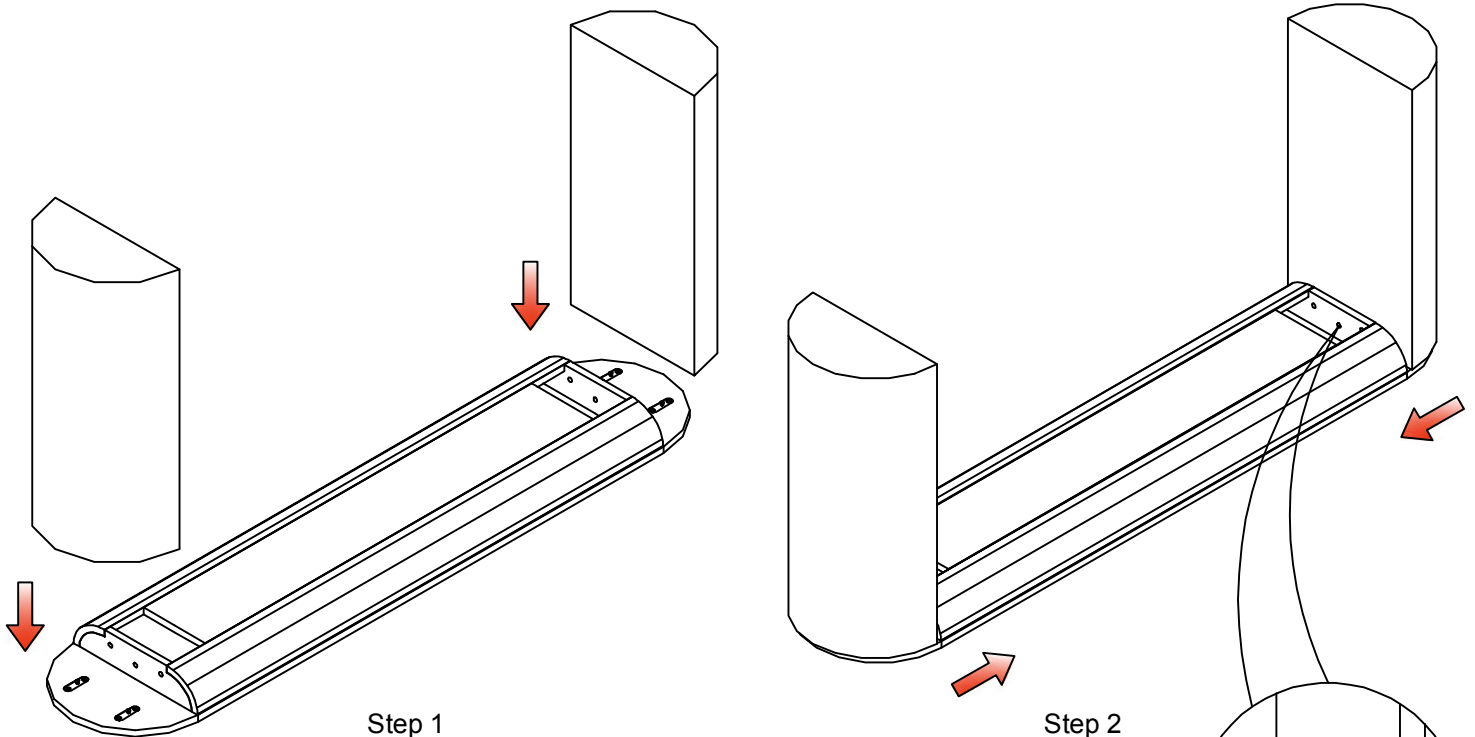
Read all instruction and study the drawing carefully before starting the assembly process.

HARDWARE PACK

NO.	DRAWING	DESCRIPTION	SIZE	QTY
A		Hexagonal Bolt	$\frac{5}{16}$ " \times 1- $\frac{3}{4}$ "	6pcs
B		Flat washer	$\frac{5}{16}$ " \times 19 \times 2	6pcs
C		Lock washer	$\frac{5}{16}$ " \times 12 \times 3	6pcs

PART LIST

NO.	DRAWING	DESCRIPTION	QTY
①		Table	1pc
②		Leg	2pcs



Adjust levelers if needed, to level case on uneven floor