

Juno connect™

JunoConnect Wafer™ 6" LED Tunable White Wafer Downlight 1000 Lumen

WF6C Series



Works with
SmartThings

WORKS WITH
alexa

works with
Hey Google

ZigBee

Bluetooth

ENERGY STAR

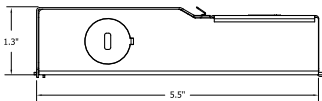
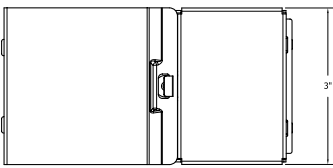
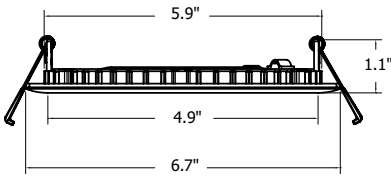
TITLE 24
PART 6

WET LOCATION™

AIR-LOC



Dimensions



ORDERING INFORMATION

Downlight

Example: WF6C RD TUWH MW

Series	Trim Style	Color Temperature	Finish
WF6C 6" Wafer-Thin LED Downlight	RD Round	TUWH Tunable White (2700K-5000K)	MW Matte White

Project:

Fixture Type:

Location:

Contact/Phone:

Product Features

The JunoConnect Wafer™ with Tunable White CCT's is the perfect way to get started with connected home lighting. Once commissioned, it can be controlled through an app or voice commands.

Connect the JunoConnect™ directly to any Apple or Android phone using Bluetooth or Zigbee. Commission through the free SmartThings app or Alexa and Google voice assistant apps.

Once installed, controlling the lighting from your mobile device is simple and easy to customize lighting from on/off, fine-tuning the color temperatures (2700K to 5000K), dimming to set the mood, and grouping to control an entire area's lighting at once.

Easy installation and servicability

- Low profile integrated LED downlight, no housing required
- Easy to handle compact size
- Installs into wood joists or suspended ceilings with new construction pan

Applications

- Residential and commercial applications including multi-family, hotels, assisted living, dormitories and other multi-level construction
- Shallow plenum, new construction
- IC rated - for direct contact with insulation

Performance

Delivered Lumens	up to 1000L
LED Color Temperature	Tunable White (2700K to 5000K)
CRI	90+
Voltage	Dedicated 120V
Dimming	Dimmable to 1%

Specifications

Aperture:	4.9"
Ceiling opening:	6.25"
Overlap trim:	6.7"
Height:	1.1"



JunoConnect Wafer™

6" LED Tunable White Wafer Downlight
1000 Lumen

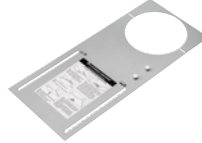


Accessories: Order as separate catalog number.

Series	
WF8643 PAN U	Universal New Construction Pan
WF6 PAN R12	6" new construction pan, retail pack of 12
WFJB U	Remodel Joist Bar
WFEXC6 SW3PIN FT4	3-Pin 6ft Cable
WFEXC10 SW3PIN FT4	3-Pin 10ft Cable
WFEXC20 SW3PIN FT4	3-Pin 20ft Cable



WF8643 UNIVERSAL
New Construction Pan



WF6 PAN



Remodel Joist Bar



WFEXC6
Cable

PERFORMANCE DATA

	WF6C
Input Voltage	120V
Input Power Typical	13.5W (+/-5%)
Frequency	50/60 Hz
EMI/RFI	FCC Title 47, Part 15 Class B (consumer)
Minimum Starting Temp	-25°C
CRI	90 min.
CCT	2700K-5000K

Note: Actual performance may differ as a result of end-user environment and application. All values are design or typical values, measured under laboratory conditions at 25°C.



JunoConnect Wafer™

6" LED Tunable White Wafer Downlight

1000 Lumen



PHOTOMETRICS

Distribution Curve

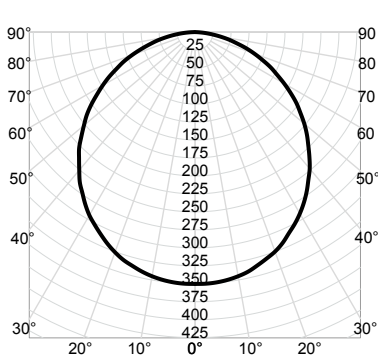
Distribution Data

Output Data

Coefficient of Utilization

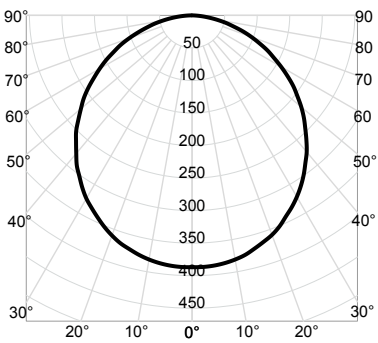
Illuminance Data at 30" Above Floor for a Single Luminaire

WF6C RD TUHW MW M6 _ 2700K Input Watts: 14.6, Delivered Lumens: 972, LPW: 66.6, S/MH: 1.23, Test No: ISF 21196P2



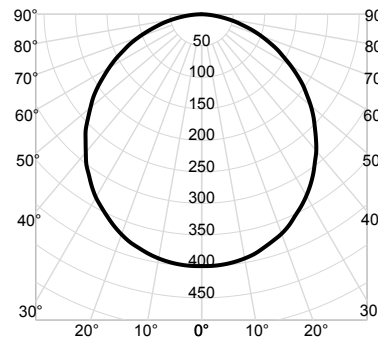
CP Summary		Zonal Lumen Summary				Coefficients of Utilization										Cone of Light			Luminance (cd/sq.m)	
0°	Zone	Lumens	% Fixture	pw	50%	30%	10%	50%	30%	10%	50%	30%	10%	Mounting Height	Initial FC Center Beam	Beam Diameter	Average Luminance			
0°	0° - 30°	271	28%	0	119	119	119	116	116	116	111	111	111	6.0	9.7	17.0	0°	19,201		
5°	0° - 40°	441	45%	1	104	100	96	102	98	94	97	94	91	8.0	5.5	22.7	45°	17,260		
15°	0° - 60°	769	79%	2	91	84	78	89	82	77	85	80	75	10.0	3.5	28.4	55°	16,435		
25°	0° - 90°	972	100%	3	80	71	65	78	70	64	75	69	63	12.0	2.4	34.0	65°	15,027		
35°	90° - 180°	0	0%	4	71	62	55	69	61	55	67	60	54	14.0	1.8	39.7	75°	12,652		
45°	0° - 180°	972	100%	5	63	54	47	62	53	47	60	52	47	Beam Angle: 109.6°			85°	8,539		
55°		172		6	57	48	41	56	47	41	54	46	41	Field Angle: 160.1°						
65°		116		7	52	43	37	51	42	36	49	42	36							
75°		60		8	47	39	33	46	38	33	45	38	32							
85°		14		9	43	35	29	43	35	29	41	34	29							
90°		0		10	40	32	27	39	32	27	38	31	27							

WF6C RD TUHW MW M6 _ 3000K Input Watts: 15.3, Delivered Lumens: 1074, LPW: 70.2, S/MH: 1.23, Test No: ISF 21196P1



CP Summary		Zonal Lumen Summary				Coefficients of Utilization										Cone of Light			Luminance (cd/sq.m)	
0°	Zone	Lumens	% Fixture	pw	50%	30%	10%	50%	30%	10%	50%	30%	10%	Mounting Height	Initial FC Center Beam	Beam Diameter	Average Luminance			
0°	0° - 30°	300	28%	0	119	119	119	116	116	116	111	111	111	6.0	10.8	17.0	0°	21,215		
5°	0° - 40°	487	45%	1	104	100	96	102	98	94	97	94	91	8.0	6.0	22.7	45°	19,072		
15°	0° - 60°	850	79%	2	91	84	78	89	82	77	85	80	75	10.0	3.9	28.4	55°	18,159		
25°	0° - 90°	1,074	100%	3	80	71	65	78	70	64	75	69	63	12.0	2.7	34.0	65°	16,604		
35°	90° - 180°	0	0%	4	71	62	55	69	61	55	67	60	54	14.0	2.0	39.7	75°	13,979		
45°	0° - 180°	1,074	100%	5	63	54	47	62	53	47	60	52	47	Beam Angle: 109.6°			85°	9,435		
55°		190		6	57	48	41	56	47	41	54	46	41	Field Angle: 160.1°						
65°		128		7	52	43	37	51	42	36	49	42	36							
75°		66		8	47	39	33	46	38	33	45	38	32							
85°		15		9	43	35	29	43	35	29	41	34	29							
90°		0		10	40	32	27	39	32	27	38	31	27							

WF6C RD TUHW MW M6 _ 3500K Input Watts: 14.1, Delivered Lumens: 1109, LPW: 78.7, S/MH: 1.23, Test No: ISF 21196P3



CP Summary		Zonal Lumen Summary				Coefficients of Utilization										Cone of Light			Luminance (cd/sq.m)	
0°	Zone	Lumens	% Fixture	pw	50%	30%	10%	50%	30%	10%	50%	30%	10%	Mounting Height	Initial FC Center Beam	Beam Diameter	Average Luminance			
0°	0° - 30°	309	28%	0	119	119	119	116	116	116	111	111	111	6.0	11.1	17.0	0°	21,907		
5°	0° - 40°	503	45%	1	104	100	96	102	98	94	97	94	91	8.0	6.2	22.7	45°	19,693		
15°	0° - 60°	878	79%	2	91	84	78	89	82	77	85	80	75	10.0	4.0	28.4	55°	18,751		
25°	0° - 90°	1,109	100%	3	80	71	65	78	70	64	75	69	63	12.0	2.8	34.0	65°	17,145		
35°	90° - 180°	0	0%	4	71	62	55	69	61	55	67	60	54	14.0	2.0	39.7	75°	14,435		
45°	0° - 180°	1,109	100%	5	63	54	47	62	53	47	60	52	47	Beam Angle: 109.6°			85°	9,742		
55°		196		6	57	48	41	56	47	41	54	46	41	Field Angle: 160.1°						
65°		132		7	52	43	37	51	42	36	49	42	36							
75°		68		8	47	39	33	46	38	33	45	38	32							
85°		15		9	43	35	29	43	35	29	41	34	29							
90°		0		10	40	32	27	39	32	27	38	31	27							

Juno connect JunoConnect Wafer™

6" LED Tunable White Wafer Downlight 1000 Lumen



PHOTOMETRICS

Distribution Curve

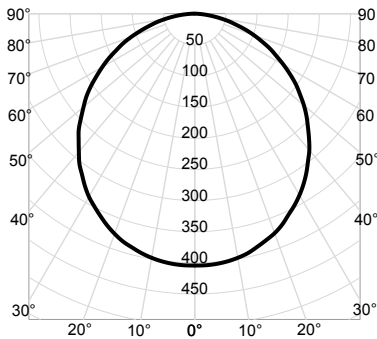
Distribution Data

Output Data

Coefficient of Utilization

Illuminance Data at 30" Above Floor for a Single Luminaire

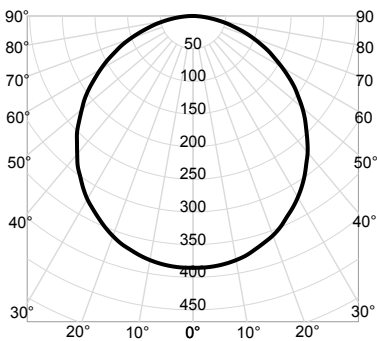
WF6C RD TUHW MW M6 _ 4000K Input Watts: 14.0, Delivered Lumens: 1122, LPW: 80.1, S/MH: 1.23, Test No: ISF 21196P4



CP Summary		Zonal Lumen Summary		Coefficients of Utilization								Cone of Light			Luminance (cd/sq.m)	
0°	Zone	Lumens	% Fixture	pw	80%		20%		50%		Mounting Height	Initial FC Center Beam	Beam Diameter	Average Luminance		
					50%	30%	10%	50%	30%	10%				0°	85°	
0°	0° - 30°	313	28%	0	119	119	119	116	116	111	111	111	6.0	11.2	17.0	0° 22,164
5°	0° - 40°	509	45%	1	104	100	96	102	98	94	97	94	8.0	6.3	22.7	45° 19,924
15°	0° - 60°	888	79%	2	91	84	78	89	82	77	85	80	10.0	4.0	28.4	55° 18,971
25°	0° - 90°	1,122	100%	3	80	71	65	78	70	64	75	69	12.0	2.8	34.0	65° 17,346
35°	90° - 180°	0	0%	4	71	62	55	69	61	55	67	60	14.0	2.1	39.7	75° 14,604
45°	0° - 180°	1,122	100%	5	63	54	47	62	53	47	60	52				85° 9,857
55°		198		6	57	48	41	56	47	41	54	46				
65°		134		7	52	43	37	51	42	36	49	42				
75°		69		8	47	39	33	46	38	33	45	38				
85°		16		9	43	35	29	43	35	29	41	34				
90°		0		10	40	32	27	39	32	27	38	31				

Beam Angle: 109.6°
Field Angle: 160.1°

WF6C RD TUHW MW M6 _ 5000K Input Watts: 14.3, Delivered Lumens: 1070, LPW: 74.8, S/MH: 1.23, Test No: ISF 21196P5



CP Summary		Zonal Lumen Summary		Coefficients of Utilization								Cone of Light			Luminance (cd/sq.m)	
0°	Zone	Lumens	% Fixture	pw	80%		20%		50%		Mounting Height	Initial FC Center Beam	Beam Diameter	Average Luminance		
					50%	30%	10%	50%	30%	10%				0°	85°	
0°	0° - 30°	298	28%	0	119	119	119	116	116	111	111	111	6.0	10.7	17.0	0° 21,136
5°	0° - 40°	485	45%	1	104	100	96	102	98	94	97	94	8.0	6.0	22.7	45° 19,001
15°	0° - 60°	847	79%	2	91	84	78	89	82	77	85	80	10.0	3.9	28.4	55° 18,092
25°	0° - 90°	1,070	100%	3	80	71	65	78	70	64	75	69	12.0	2.7	34.0	65° 16,542
35°	90° - 180°	0	0%	4	71	62	55	69	61	55	67	60	14.0	2.0	39.7	75° 13,927
45°	0° - 180°	1,070	100%	5	63	54	47	62	53	47	60	52				85° 9,400
55°		189		6	57	48	41	56	47	41	54	46				
65°		128		7	52	43	37	51	42	36	49	42				
75°		66		8	47	39	33	46	38	33	45	38				
85°		15		9	43	35	29	43	35	29	41	34				
90°		0		10	40	32	27	39	32	27	38	31				

Beam Angle: 109.6°
Field Angle: 160.1°



JunoConnect Wafer™

6" LED Tunable White Wafer Downlight
1000 Lumen



Specifications

Housing

Polycarbonate injection molded outer frame, with steel back plate. Non-conductive dead-front trim design suitable for a wide range of applications and codes requiring a non-conductive lens • FT4 3-pin plenum rated cable connector to connect from module to remote driver box • Steel spring clip for easy installation. 6" cut out template is provided to ensure a correct sized hole is cut into ceiling for proper installation of the trim. Size of hole should not exceed 6 ¼ inches for this product • Can be installed from 3/8" to 1 ½" ceiling thickness • Can be removed from below the ceiling for service or replacement.

LED Light Engine

LEDs are integrated to one piece high purity aluminum, thermally conductive housing to provide uninterrupted heat transfer to ensure long life of the LED

- Tunable color temperature from 2700K to 5000K • 90 CRI minimum
- Dimmable to 1%

Driver

Dedicated 120 volt replaceable driver • Accommodates 120 volts AC at 50/60Hz • IC rated driver • Isolated driver integrated inside steel remote box with four 7/8" knockouts with slots for pryout • Suitable for pulling wires with the 12 cubic-inch wiring compartment to accommodate up to (6) 14 gauge insulated conductors; making the Wafer LED Downlights much easier to wire in 2in/2out (plus ground) daisy-chain applications and contractor friendly • Designed to provide 50,000 hours of life • 3-year warranty on LED components.

Optical System

Computer-optimized reflector design with high reflectance white finish coupled with a high transmission diffusing lens conceals the LEDs • Efficient system that can produce over 1000 lumens while using 13.5W • Replaces 75W incandescent.

Life

Rated for 50,000 hours at 70% lumen maintenance.

Labels

CSA certified to US and Canadian safety standards • ENERGY STAR® certified product • Suitable for wet location • Air-Loc certified in accordance with ASTM E283-2004 • NOM Certified • Can be used to comply with California Title 24 Part 6 High Efficacy LED light Source Requirements.

Testing

All reports are based on published industry procedures; field performance may differ from laboratory performance.

Warranty

3-year warranty. Complete warranty terms located at:

www.acuitybrands.com/CustomerResources/Terms_and_conditions.aspx

Specifications subject to change without notice.