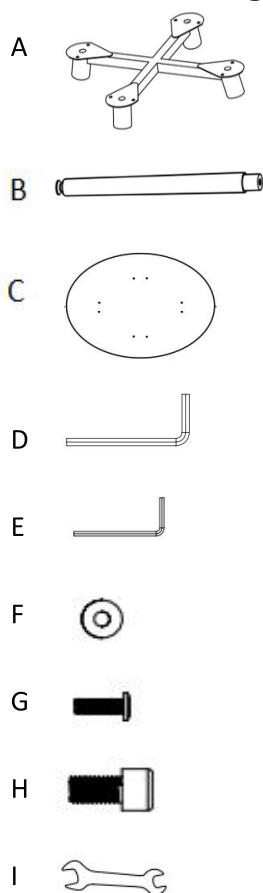


Model 161-PT32 32" Round Table

Parts Listing



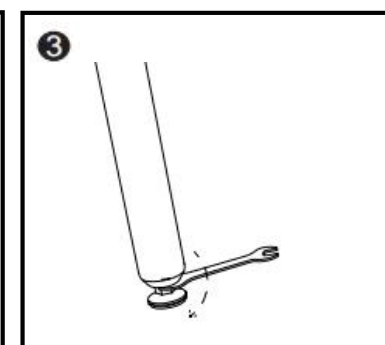
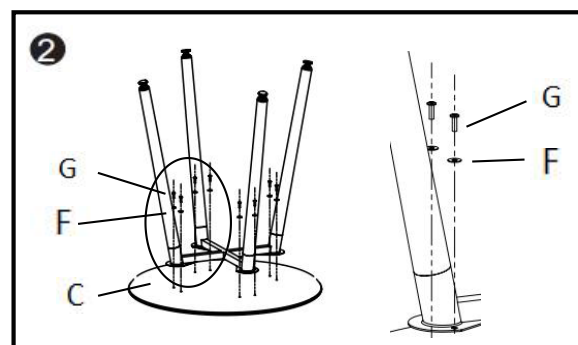
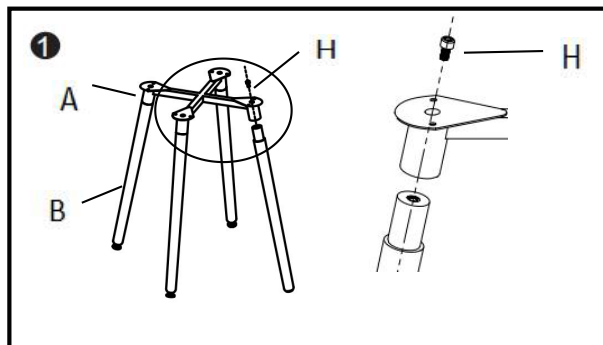
Assembly Instructions

Tools Needed: Allen Wrench and Open End Wrench (provided)



Please read all instructions before assembly

- Step 1: Remove 4 black plastic covers from support (A). Insert 4 beech wooden leg (B) to the support (A) as below drawing showing. Use 4 screws (H) to fix the 4 wooden leg (B) to the support .Tighten all screws with Allen Wrench (D)
- Step 2: Attach the support (A) to MDF top (C),use 8 screws (G) and 8 gasket (F) to fix the support (A) to the MDF top (C) .Tighten all screws with Allen Wrench(E).
- Step 3: Use Open end Wrench (I) to adjust glide when the table is uneven.



Assembly Notes:

During assembly, hand tighten screws only. When all screws are in place, you may then tighten all screws completely.

CAUTION:

1. Do not use this table as a step ladder.
2. Check for loose screws and tighten them every 6 months.

ofm

161 Tradition Trail, Holly Springs, NC, 27540
800-520-7471 (voice) 919-362-4765 (fax)
919-303-6389 (voice) www.ofminc.com
support@ofminc.com