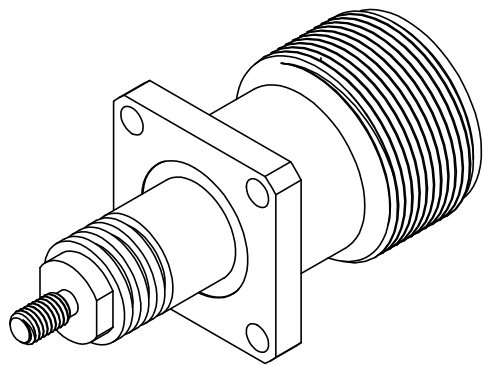
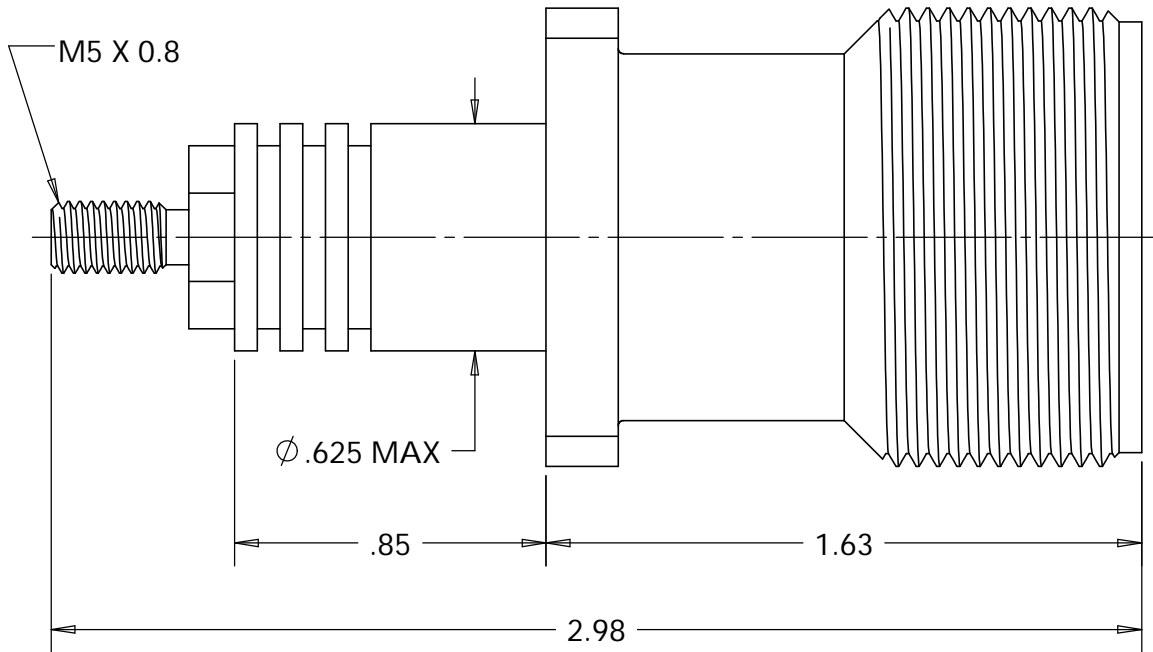
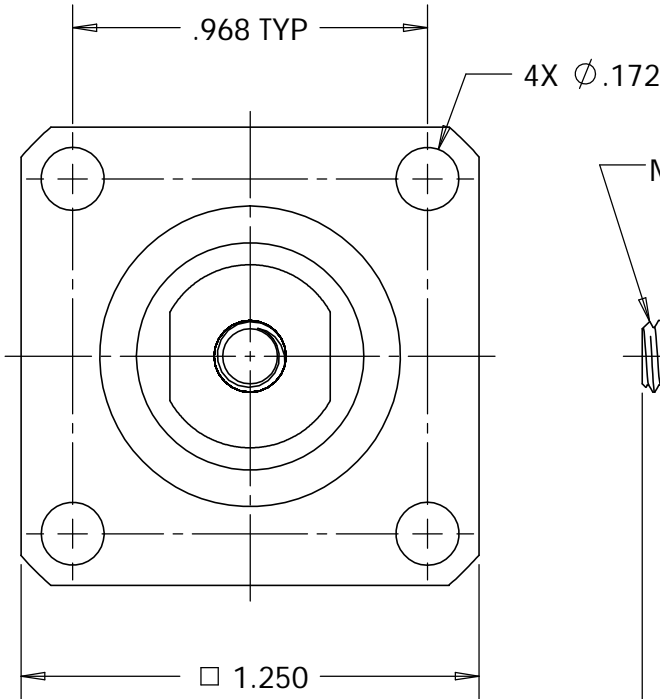


This document, including the design, configuration and mechanical features revealed herein are the sole, confidential and proprietary property of TRU Corporation. Reproduction or use thereof, in whole or part, is prohibited without the prior written consent of TRU Corporation.

REV.	DESCRIPTION	DATE	APPROVED
-	ORIGINAL ISSUE	02/15/08	AM



ISOMETRIC VIEW  
SCALE 1:1



ENGINEERING DATA:


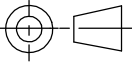
ELECTRICAL:  
IMPEDANCE: 50 OHMS NOMINAL

MECHANICAL:  
INTERFACE: LC(f) PER MIL-STD-348A, FIG. 315.2

MATERIAL:  
INSULATOR: PTFE (TEFLON) PER ASTM-D1710, I1A  
CONTACT: BERYLLIUM COPPER C17300, TD04 (H) PER ASTM-B196  
BODY: BRASS C36000, H02 PER ASTM-B16

FINISH:  
CONTACT: SILVER PLATED  
BODY: NICKEL PLATED

NOTES:  
1. UNLESS OTHERWISE SPECIFIED; ALL  
DIMENSIONS ARE REFERENCE ONLY.  
  
2. PRODUCT COMPLIES WITH ROHS DIRECTIVE 2002/95/EC.

MATERIAL	DO NOT SCALE DRAWING	DRAWN Warren Whitten	DATE 2/6/08	 <b>TRU CORPORATION</b> 245 LYNNFIELD STREET, PEABODY, MA 01960 <small>The Custom Interconnect Leader™</small>		
		ENG APPR. AM	DATE 02/14/08			
		MFG APPR.	DATE			
		OTHER APPR.	DATE	TITLE: CONNECTOR, COAXIAL, RF LC(f) RECEPTACLE, PANEL		
COMMENTS:	UNLESS OTHERWISE SPECIFIED: DIMENSIONS ARE IN INCHES  TOLERANCES: FRACTIONS: $\pm 1/64$ .XX : $\pm .01$ .XXX: $\pm .005$ ANGLES: $\pm 1/2^\circ$ MACHINED SURFACES:  63/	THIRD ANGLE PROJECTION 		SIZE <b>B</b>	DWG. NO. TRU-10832	REV -
				CAGE CODE: 92180	SCALE: 2:1	SHEET 1 OF 1
surface area: sq inch	weight: lbs					