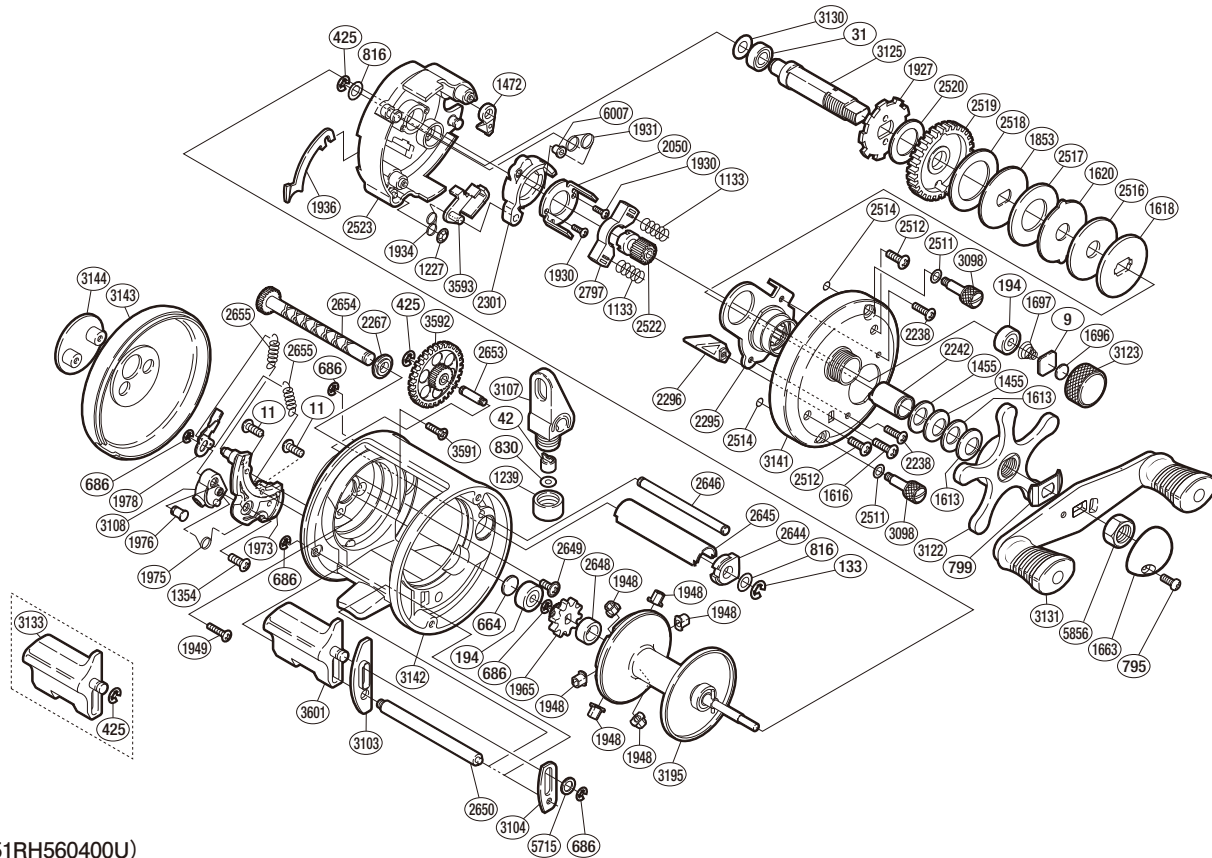


SHIMANO

CORVALUS

CVL-400



(51RH560400U)

#	Part No.	Description	#	Part No.	Description	#	Part No.	Description
9	105N0	Spacer	1934	10N20	Clutch Pawl Spring	2649	10K8W	Screw
11	10MT0	Screw	1936	10GB3	Clutch Plate	2650	10N4V	Clutch Button Support Bar
31	105BL	Ball Bearing	1948	10AH2	Brake Collar	2653	10NS0	Idle Gear B Shaft
42	10FFZ	Line Guide Pawl	1949	10LSR	Screw	2654	10KC0	Worm Shaft
133	105NJ	E Lock	1965	10AQA	Idle Gear A	2655	10NRN	Click Spring
194	105BX	Ball Bearing	1973	10EXL	Click Plate	2797	10N1H	Yoke
425	105NE	E Lock	1975	10HR1	Click Switch Spring	3098	106BK	Side Plate Nut
664	1057S	Spacer B	1976	10HRM	Click Shaft	3103	10GDM	Clutch Button Guide A
686	105NK	E Lock	1978	1054A	Click Pawl	3104	10GB9	Clutch Button Guide B
795	10QG1	Screw	2050	10MB9	Clutch Cam Retainer	3107	10KCG	Line Guide
799	107QJ	Friction Washer	2238	10LF8	Screw	3108	10HQV	Click Switch
816	109F6	Washer	2242	10MAR	Roller Clutch Inner Tube	3122	1082M	Star Drag
830	10TZF	Spacer	2267	10HT2	Worm Bushing B	3123	106BS	Cast Control Cap
1133	104BL	Yoke Spring	2295	10NZC	Roller Clutch Assembly	3125	10MFV	Drive Shaft
1227	109H9	Push Nut (SPN-2)	2296	10M5Q	Return Pin Guide	3130	10HV5	Washer
1239	10BHU	Pawl Cap	2301	10LYN	Clutch Cam	3131	10B13	Handle Assembly
1354	103C7	Screw	2511	10KF8	Washer	3141	10JD7	Right Side Plate
1455	1052E	Drag Spring Washer H	2512	10LFB	Screw	3142	10LKR	One-piece Frame
1472	10P1Y	Anti-Reverse Pawl	2514	10MB6	O Ring	3143	104TK	Left Side Plate
1613	10EW3	Drag Spring Washer L	2516	10CJG	Drag Washer AG	3144	10LH3	Side I.D. Plate
1616	103GV	Screw	2517	1072B	Drag Washer CG	3195	10KEV	Spool Assembly
1618	10D4K	Key Washer C	2518	10D2S	Drag Washer BG	3591	10MLD	Screw
1620	10D48	Eared Washer	2519	109D7	Drive Gear	3592	10EXC	Idle Gear B
1663	10QBF	Handle Nut Plate	2520	10D2M	Drive Shaft Washer B	3593	10NZH	Clutch Pawl
1696	10896	Spacer	2522	10AH9	Pinion Gear	3601	10TZJ	Quick-Fire II Clutch Bar
1697	10BRB	Spool Tension Spring	2523	10P6F	Set Plate	5715	10G6D	Washer
1853	10D47	Key Washer A	2644	10HUE	Worm Bushing A	5856	10LM8	Handle Nut
1927	109BE	Anti-Reverse Ratchet	2645	10HVF	Level Wind Guard	6007	10F23	Retractor Spring Collar
1930	103NH	Screw	2646	10HW5	Stabilizer Bar			
1931	10N1M	Retractor Spring	2648	10P6D	Idle Gear A Bush			

Please note that the number of adjusting washers may not be the same as shown in the exploded views.
(Adjustment will vary with each individual product.)

(230809)_006