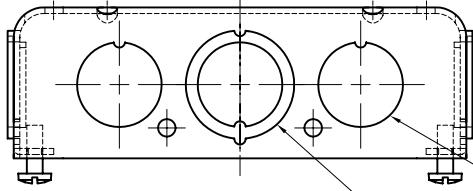
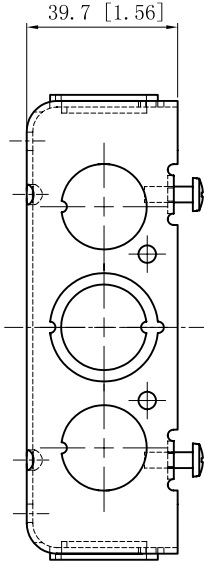


SIDES	BOTTOM
8 1/2" KNOCKOUTS	
4 1/2"-3/4" MOON KNOCKOUTS	
2 PCS 8-32×1/2 Screws Installed	
Material: Steel-0.0625"-G60 Galvanized	



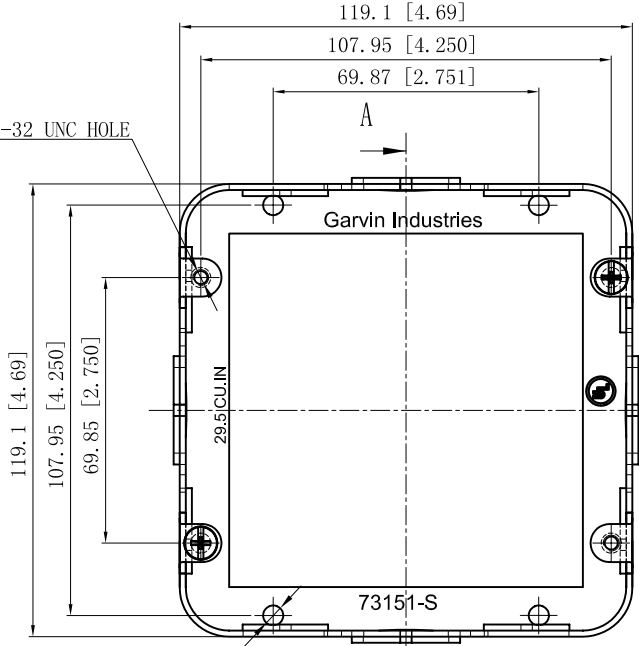
8 1/2" KNOCKOUTS $\phi = 22.5$ [$\phi = 0.89$]
(FOUR SIDE)

4 1/2"-3/4" KNOCKOUTS $\phi = 22.5$ [$\phi = 0.89$]
 $\phi = 22.5$ [$\phi = 0.89$] (FOUR SIDE)



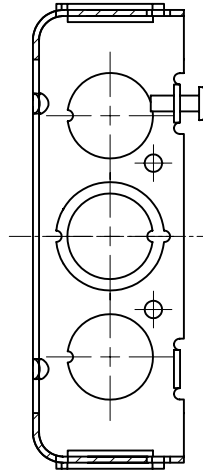
39.7 [1.56]

4-#8-32 UNC HOLE



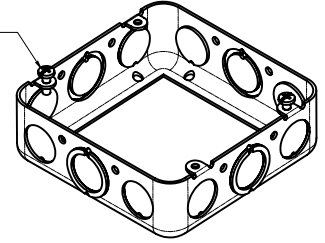
8- $\phi 5.3$ [$\phi 0.21$] hole

A



CUTAWAY VIEW A-A

#8-32, ×2



DESCRIPTION
TRADE REFERENCE TERMS

This data sheet is for reference only. GARVIN INDUSTRIES reserves the right to make changes to the design without prior notice.

STANDARD PACKING	GARVIN INDUSTRIES		
	TITLE 4-11/16" SQUARE EXTENSION RINGS 2-1/8" DEEP		
25 PCS	SIZE	DWG NO.	REV
	A4	73151-S	C
DATA SHEET			