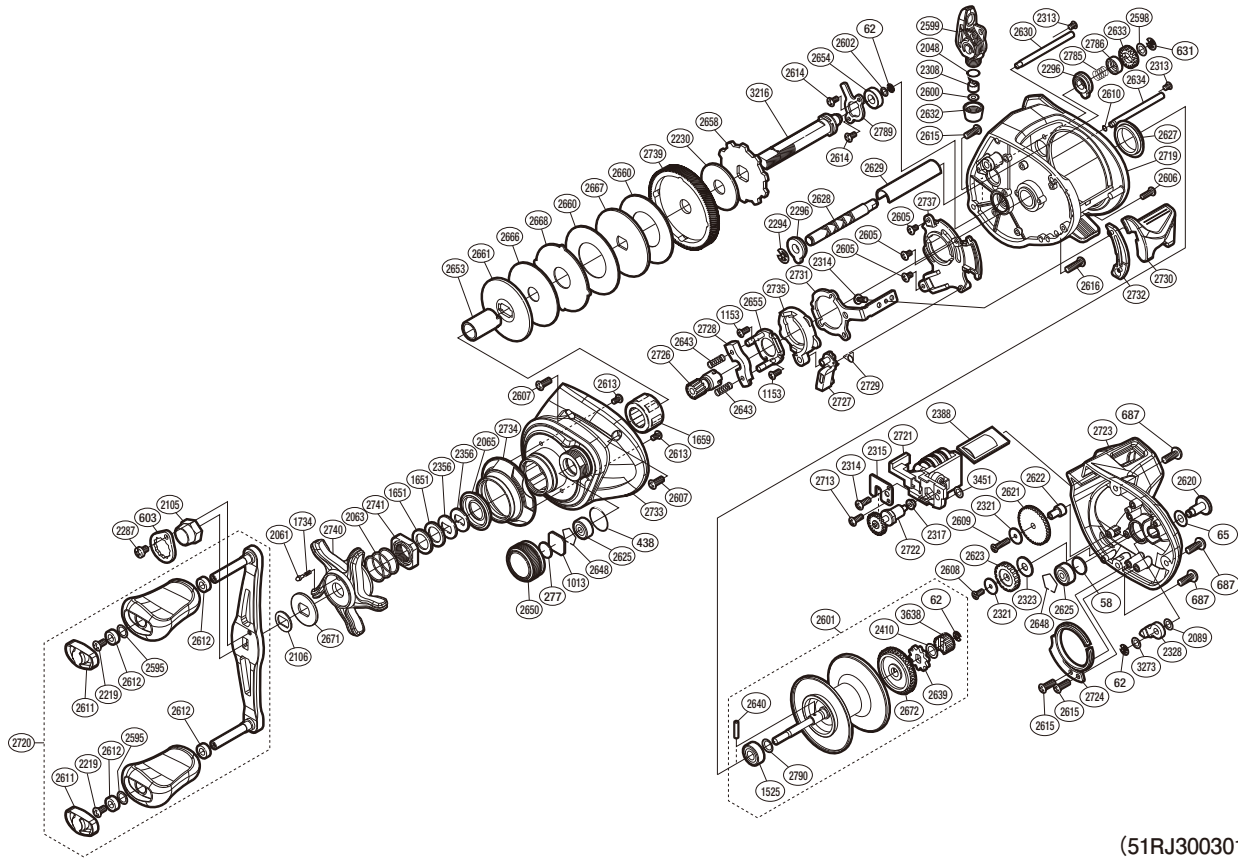


SHIMANO

TEKOTA

TEKA301HGLC



(51RJ300301X)

#	Part No.	Description	#	Part No.	Description	#	Part No.	Description
58	10GEU	Spacer B	2598	10S42	Washer	2660	1025D	Drag Washer
62	105NK	E Lock	2599	100UY	Line Guide Assembly	2661	1025E	Key Washer
65	104H2	Washer A	2600	1003S	Spacer	2666	1024D	Drag Washer
277	10896	Cast Control Spacer (B)	2601	100UZ	Spool Assembly	2667	1024E	Key Washer
438	108WK	O Ring	2602	1003V	Washer	2668	1024F	Eared Washer
603	10LMC	Handle Nut Plate	2605	10SUT	Screw	2671	10J22	Click Plate Retainer
631	105NC	E Lock	2606	10MT9	Screw	2672	10233	Counter Gear A
687	103GP	Screw	2607	101GR	Screw	2713	10TBS	Screw
1013	1085F	Cast Control Spacer (A)	2608	100UL	Screw	2719	10SXC	Frame Assembly
1153	10LVJ	Screw	2609	10SUS	Screw	2720	10RUV	Handle Assembly
1525	105CA	Ball Bearing	2610	108WW	O Ring	2721	10RUK	Counter Unit Assembly
1651	10J1N	Star Drag Spacer	2611	10SS2	Handle Knob Seal	2722	10RUU	Counter Gear Assembly
1659	10F37	Roller Clutch Bearing	2612	10PXZ	Handle Knob Bushing B	2723	10SC2	Right Side Plate
1734	10BT2	Click Spring	2613	10LA3	Screw	2724	13X9E	Click Spring
2048	108WQ	O Ring	2614	10LCT	Screw	2726	10SMW	Pinion Gear
2061	10MFC	Click Pin	2615	10LFN	Screw	2727	1021U	Clutch Pawl
2063	10A70	Star Drag Spring	2616	10LHY	Screw	2728	1046Y	Yoke
2065	10C69	Roller Clutch Water Proof	2620	101H9	Click Button	2729	1021T	Clutch Pawl Spring
2089	10GHP	Washer	2621	10238	Idle Gear B	2730	1021W	Clutch Button
2105	10R3C	Handle Nut	2622	10231	Idle Gear B Support	2731	1021Z	Clutch Plate
2106	107QN	Drive Shaft Shield	2623	101TN	Idle Gear D	2732	10SC3	Clutch Bar Guide (B)
2219	10LFA	Screw	2625	105C2	Ball Bearing	2733	10SC4	Left Side Plate
2230	1025A	Drag Washer	2627	1024L	Frame Center Seal	2734	10224	Clutch Button Attachment
2287	10LLU	Screw	2628	101HE	Worm Shaft	2735	10225	Clutch Cam
2294	10KHG	E Lock	2629	101H5	Level Wind Guard	2737	10227	Clutch Guard
2296	100GP	Worm Bushing A	2630	101M0	Stabilizer Bar A	2739	10DSM	Drive Gear
2308	10BHQ	Line Guide Pawl	2632	101HC	Pawl Cap	2740	10SBJ	Star Drag
2313	10MPD	Screw	2633	101TJ	Idle Gear C	2741	10SRQ	Star Drag Nut
2314	10LCL	Screw	2634	101TL	Stabilizer Bar B	2785	10SXP	Worm Shaft Spring
2315	100H8	Counter Frame Plate	2639	101HA	Click Gear	2786	10RVK	Worm Shaft Cam
2317	10CYA	Bushing	2640	10MD1	Spool Clutch Pin	2789	10RVE	Drive Shaft Retainer
2321	10DT6	Idle Gear B Spacer B	2643	104BC	Yoke Spring	2790	10SYU	Spring
2323	101JK	Idle Gear B Spacer A	2648	1054D	Bearing Retainer	3216	100NX	Drive Shaft
2328	10T84	Clutch Pawl	2650	10234	Cast Control Cap	3273	100K0	Washer
2356	109F5	Drag Spring Washer	2653	10250	Roller Clutch Inner Tube	3451	10RKQ	Washer
2388	1000T	Counter Lens Assembly	2654	10BQ7	Drive Shaft Bushing	3638	10TCP	Idle Gear A
2410	10S0Q	Washer	2655	10QVM	Clutch Cam Retainer			
2595	1003Z	Washer	2658	10D73	Anti-Reverse Ratchet			

Please note that the number of adjusting washers may not be the same as shown in the exploded views.
(Adjustment will vary with each individual product.)

(230718)_006