

Sentinel Mark II® Pressure Balance Diverter Valve Shower Combination

FEATURES:

- Includes Sentinel Mark II® concealed anti-scald balanced pressure shower valve and handheld spray combination with integral diverter and integral stops.
- Chrome plated brass wall plate with metal index.
- Chrome plated brass lever handle. Independent center sleeve allows up to 1 in. of rough-in variation.
- Adjustable temperature limit stop. Brass valve body.
- Pressure balancing & ceramic temperature regulating cartridge with built-in check valves.
- Can be installed back-to-back.
- Roughing-in template included.
- Four port valve with ½ in. NPT Male (1/2 in. copper sweat) inlets and outlets..
- S-1554 chrome plated tub spout.
- In-line vacuum breaker.
- VS-100-PC handshower with flow control device reduces flow to 2.5 gpm (9.46 L/min)
- 69 in. square lock stainless steel hose with rubber liner.
- Chrome plated brass supply elbow with wall flange.
- 30 in. slide bar with mounting screws.
- Swivel connector.

OPTIONS:

- E175: 1.75 gpm (6.6 L/min) flow rate hand shower
- VH: 69 in. white vinyl hose

STOCK FINISH:



PC

STANDARDS:

- ASSE 1016 certified (shower valve)
- ASME 112.18.1/CSA B125.1 certified (shower valve)
- ADA Compliant (Shower valve & trim)

WARRANTY:

Visit www.speakman.com for full product warranty information

- See Speakman.com for warranty information



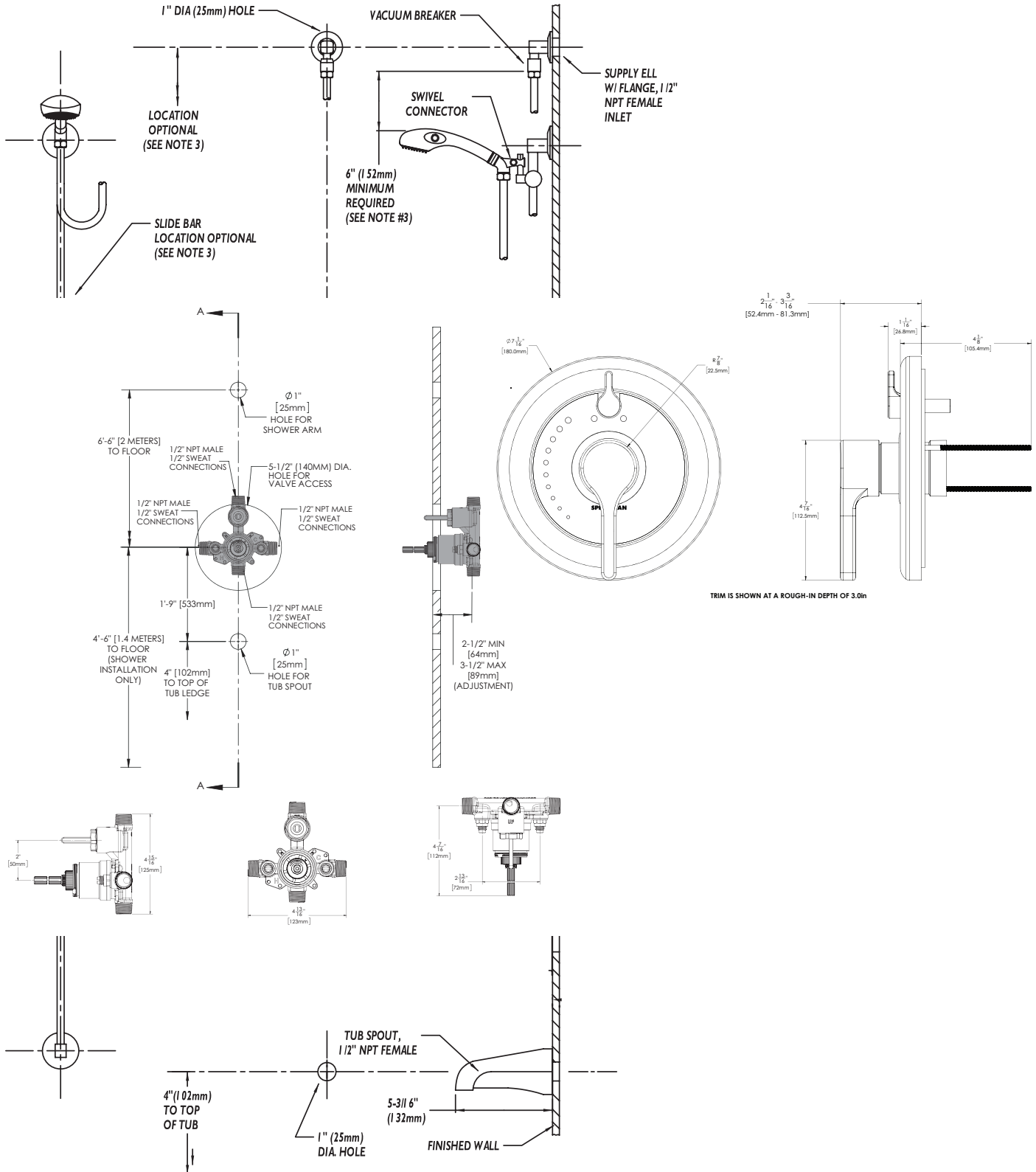
Information continues on next page

NOTE: 1. All dimensions are in inches (millimeters) unless otherwise specified and are subject to change without notice. 2. Unless otherwise specified, all inlets and outlets are 1/2" female copper sweat. 3. For ADA mounting locations, consult ADAAG, ANSI A117.1, or static regulations

Architect/Engineer Approval Space:

P: 800-537-2107
F: 800-977-2747
W: WWW.SPEAKMAN.COM
R: 02-SEPTEMBER 2021

Sentinel Mark II® Pressure Balance Diverter Valve Shower Combination



NOTE: 1. All dimensions are in inches (millimeters) unless otherwise specified and are subject to change without notice. 2. Unless otherwise specified, all inlets and outlets are 1/2" female copper sweat. 3. For ADA mounting locations, consult ADAAG, ANSI A117.1, or static regulations

Architect/Engineer Approval Space:

P: 800-537-2107
F: 800-977-2747
W: WWW.SPEAKMAN.COM
R: 02-SEPTEMBER 2021