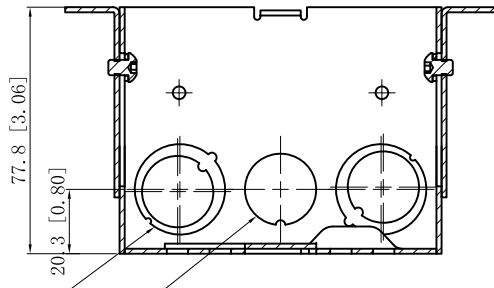
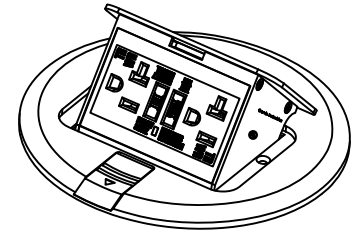


SIDES	BOTTOM
2 PCS 10-32×1/4 Screws Installed	
2 pcs No.10 spring lock washers Installed	
1 pcs #10-32 Allen wrench hex key	
Material:Steel-0.0625"-G60 Galvanized	



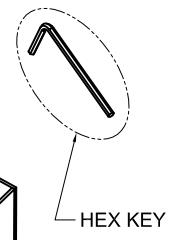
CUTAWAY VIEW A-A

- 4 1/2"-3/4" KNOCKOUTS $\phi=22.50$ [$\phi=0.886$]
 $\phi=28.50$ [$\phi=1.122$]
- 2 1/2" KNOCKOUTS $\phi=22.50$ [$\phi=0.886$]

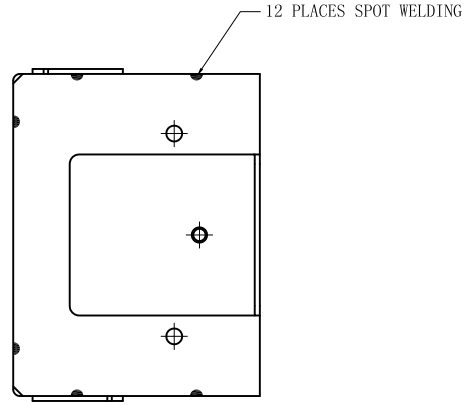
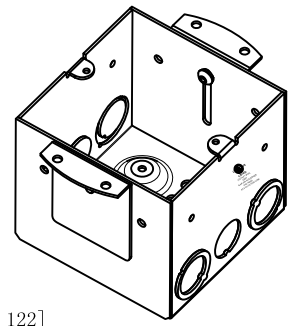


NO.10 LOCK WASHERS, ×2

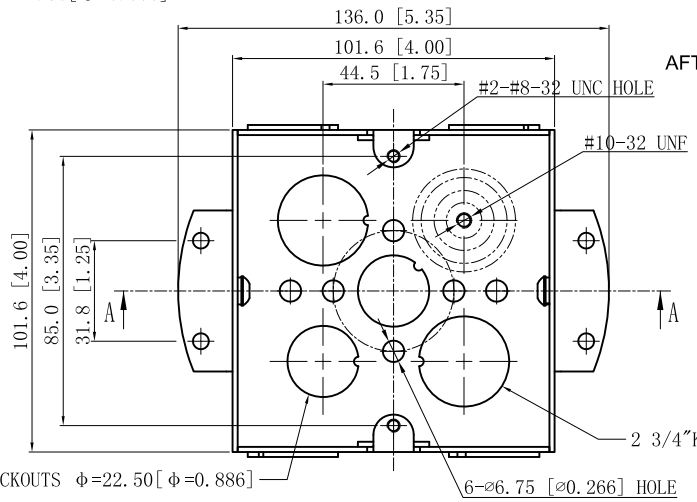
#10-32 UNF, ×2
"PINCH" END OF SCREW
AFTER INSTALL SO IT CANNOT
BE EASILY REMOVED



HEX KEY

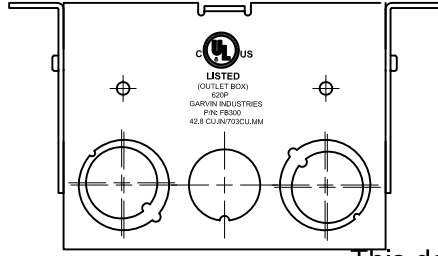


12 PLACES SPOT WELDING



2 1/2" KNOCKOUTS $\phi=22.50$ [$\phi=0.886$]

6- $\phi 6.75$ [$\phi 0.266$] HOLE



UL LISTED
(OUTLET BOX)
6000
GARVIN INDUSTRIES
P/N: FB300
42,8 CU./IN. (703CL/UM)

This data sheet is for reference only .GARVIN INDUSTRIES reserves the right to make changes to the design without prior notice.

DESCRIPTION
TRADE REFERENCE TERMS

STANDARD PACKING	TITLE		
	4" SQUARE BOXES		
	SIZE	DWG NO.	REV
	A4	FBCVBR-GTR-KIT	
DATA SHEET			
www.garvinindustries.com			