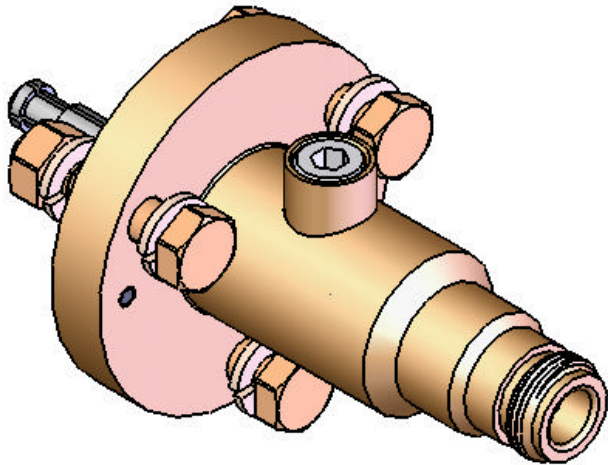


This document, including the design, configuration and mechanical features revealed herein are the sole, confidential and proprietary property of TRU Corporation. Reproduction or use thereof, in whole or part, is prohibited without the prior written consent of TRU Corporation.

REV.	DESCRIPTION	DATE	APPROVED
-	ORIGINAL ISSUE	2/16/77	RMK
A	CHANGED PER ECO 2173	3/21/03	RMK
B	CHANGED PER ECO 2870	9/11/06	DA



ENGINEERING DATA:

MATERIAL:

SHELL: BRASS

INNER CONDUCTORS: BERYLLIUM COPPER

INSULATORS: TEFLON (PTFE)

FINISH:

SHELL: SILVER PLATED

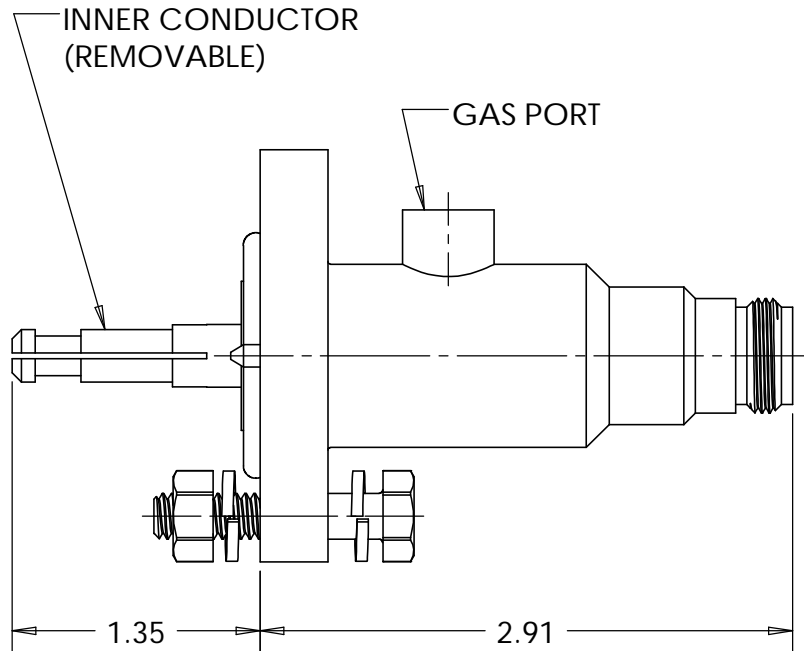
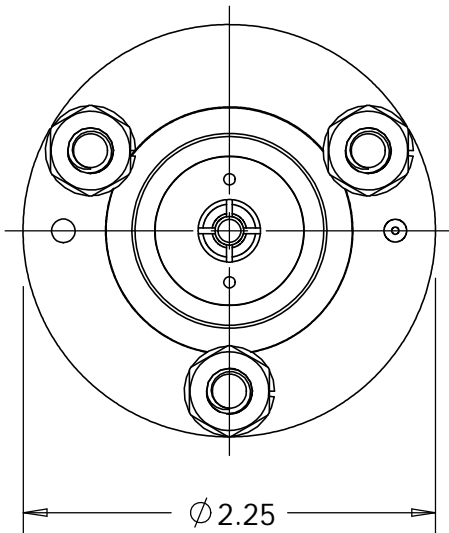
N(f) CONTACT: SILVER PLATED

REMOVABLE INNER CONDUCTOR: NICKEL PLATED

NOTES:

1. UNLESS OTHERWISE SPECIFIED; ALL
DIMENSIONS ARE REFERENCE ONLY.

2. FSN: 5935-00-994-8728



MATERIAL

DO NOT SCALE DRAWING

DRAWN

DATE

RMK

2/16/77

UNLESS OTHERWISE SPECIFIED:

DIMENSIONS ARE IN INCHES

ENG APPR.

DATE

Koch

2/16/77

MFG APPR.

DATE

OTHER APPR.

DATE

TOLERANCES:

FRACTIONS: $\pm 1/64$

.XX: $\pm .01$

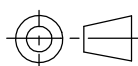
.XXX: $\pm .005$

ANGLES: $\pm 1/2^\circ$

MACHINED SURFACES:

63/

THIRD ANGLE PROJECTION



TRU CORPORATION
245 LYNNFIELD STREET, PEABODY, MA 01960

The Custom Interconnect Leader™

TITLE:

CONNECTOR, COAXIAL, RF
N(f) to 7/8" EIA (50 Ohm) ADAPTER

SIZE
B

DWG. NO.

TRU-5313

REV
B

CAGE CODE: 92180

SCALE: 1:1

SHEET 1 OF 1