

SPECIFICATION SUBMITTAL SHEET

j o n e s s t e p h e n s c o r p o r a t i o n

STAINLESS STEEL REPAIR CLAMP

MEETS THE FOLLOWING QUALIFICATIONS:

BANDS: STAINLESS STEEL TYPE 300

LUGS: MALLEABLE IRON PER ASTM A47 GRADE 32610

GASKET: GRADE 60 COMPOUNDED TO RESIST OIL, NAT. GAS,
ACIDS, ALKALIES, MOST AHF, WATER AND OTHER CHEMICALS.
TEMPERATURES -40 TO 212 DEGREES F.

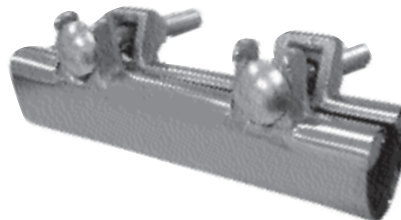
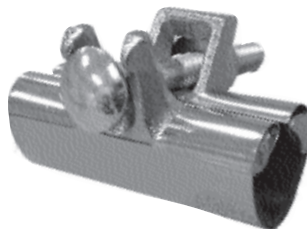
BOLTS & NUTS: ASTM A307

ALL CLAMPS ARE 3" WIDE UNLESS OTHERWISE SPECIFIED.

features and benefits:

- Plated lug, carriage bolts and nuts for corrosion protection
- 301 stainless steel clamp with neoprene gaskets for up to 180o F
- Long neck carriage bolts for easy installation

This product and others like it can be found in the Jones Stephens catalog. Call today to order your catalog or download it from our website: www.plumbest.com



PART NO.	IPS/SCH. 40	CTS NOM.
3" ONE BOLT		
R30-375	3/8"	1/2"
R30-050	1/2"	3/4"
R30-075	3/4"	1"
R30-100	1"	1 1/4"
R30-125	1 1/4"	1 1/2"
R30-150	1 1/2"	-
R30-200	2"	-
R30-250	2 1/2"	-
R30-300	3"	-
R30-400	4"	-
R30-600	6"	-

PART NO.	IPS/SCH. 40	CTS NOM.
6" TWO BOLT		
R60-375	3/8"	1/2"
R60-050	1/2"	3/4"
R60-075	3/4"	1"
R60-100	1"	1 1/4"
R60-125	1 1/4"	1 1/2"
R60-150	1 1/2"	-
R60-200	2"	-
R60-250	2 1/2"	-
R60-300	3"	-
R60-400	4"	-
R60-600	6"	-

jones stephens corporation
3249 moody parkway • moody, alabama 35004
toll free phone: 1-800-355-6637 • toll free fax: 1-800-462-6991
www.plumbest.com