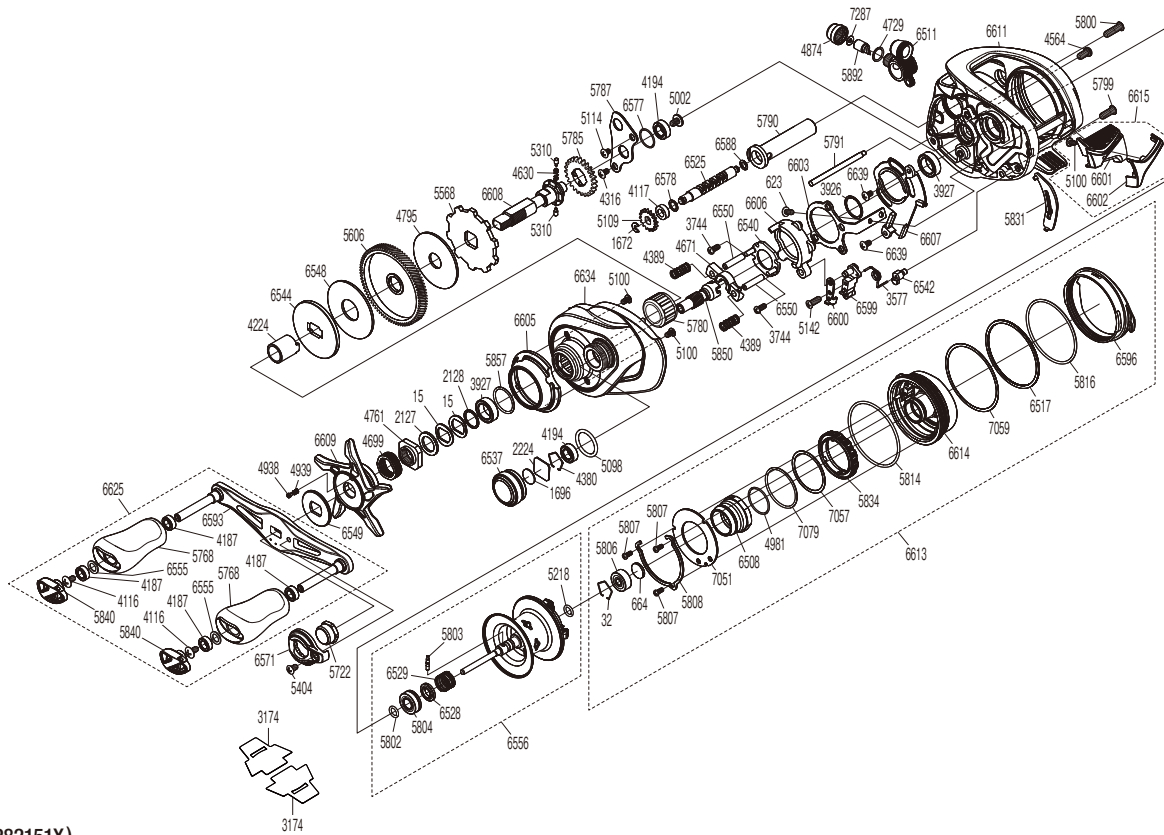


# SHIMANO

## Metanium

## ME-151X



(51RL282151X)

#	Part No.	Description	#	Part No.	Description	#	Part No.	Description
0015	10D60	Drag Spring Washer	5218	10E27	O Ring	6548	10RWJ	Drag Washer
0032	10GEW	Bearing Retainer	5310	10HJG	Idle Gear Pin	6549	101JC	Star Drag Click Plate
0623	103C0	Screw	5404	10DN7	Screw	6550	10RVR	Clutch Cam Retainer Cover
0664	1057S	Spacer B	5568	1021K	Anti-Reverse Ratchet	6555	104FH	Washer
1672	105NC	E Lock	5606	1021S	Drive Gear	6556	100BS	Spool Assembly(With Bearing)
1696	10896	Cast Control Spacer	5722	101DW	Handle Nut	6571	1017T	Handle Nut Plate
2127	10J1N	Star Drag Spacer	5768	10EBH	Handle Knob	6577	10S24	O Ring
2128	105PW	Bearing Washer	5780	1005E	Roller Clutch Bearing	6578	10GFG	Washer
2224	1085F	Spool Tension Spacer	5785	10057	Idle Gear	6588	100T8	Washer
3577	10N1V	Clutch Pawl Spring	5787	1005S	Drive Shaft Retainer	6593	100HZ	Handle Shank Assembly
3744	10LVH	Screw	5790	1005Z	Level Wind Guard	6596	10RVY	Right Side Plate Cam Lever
3926	10G8C	Washer	5791	1006J	Level Wind Guide	6599	10RWC	Clutch Pawl A
3927	10EX8	Ball Bearing	5799	101GQ	Screw	6600	10RWF	Clutch Pawl B
4116	103E9	Screw	5800	103LN	Screw	6601	10RW1	Clutch Button
4117	10PXY	Bushing	5802	10TNF	O Ring	6602	10RWB	Clutch Button Cover
4187	104VX	Ball Bearing	5803	10MD0	Spool Clutch Pin	6603	10RW6	Clutch Plate
4194	105BP	Ball Bearing	5804	1005D	Ball Bearing	6605	10RVZ	Clutch Button Attachment
4224	10BN3	Roller Clutch Inner Tube	5806	10S37	Ball Bearing	6606	10SKS	Clutch Cam
4316	10MT2	Screw	5807	1026U	Screw	6607	10RVT	Clutch Guard
4380	1057X	Retainer	5808	10TUC	Cam Lever Retainer	6608	10RWL	Drive Shaft
4389	104BU	Yoke Spring	5814	108WZ	O Ring	6609	10RW4	Star Drag
4564	10LZD	Screw	5816	1006P	O Ring	6611	100NW	Frame Assembly
4630	10JDX	Idle Gear Spring	5831	1007C	Clutch Bar Guide B	6613	100NY	Right Side Plate Assembly
4671	1046U	Yoke	5834	10055	Br Dial	6614	10T8Y	Dial Case Assembly
4699	10A71	Star Drag Spring	5840	1005A	Handle Knob Seal	6615	100P2	Clutch Button Assembly
4729	108WQ	O Ring	5850	10072	Pinion Gear	6625	10T98	Handle Assembly
4761	10A0C	Star Drag Nut	5857	1027V	O Ring	6634	10EBN	Left Side Plate
4795	10CJ1	Drag Washer	5892	10211	Line Guide Pawl	6639	100BD	Screw
4874	10FJB	Pawl Cap	6508	10T8Z	Brake Pipe Gear Assembly	7051	10E6J	Br Dial Retainer Plate
4938	10B27	Click Pin	6511	100J9	Line Guide Pawl Holder Assembly	7057	10T9R	Washer
4939	10988	Click Spring	6517	10SKT	Washer	7059	10E72	Washer
4981	10LA8	O Ring	6525	10EET	Worm Shaft	7079	10CG0	O Ring
5002	10PVU	Screw	6528	10SWZ	Bushing	7287	13GGU	Washer
5098	10LA9	O Ring	6529	10SJF	Bearing Pressure Spring			
5100	1055J	Screw	6537	10RVW	Cast Control Cap			
5109	10FNX	Idle Gear	6540	10RWA	Clutch Cam Retainer	3174	10PBQ	Reel Seat Spacer (Accessory)
5114	10MPF	Screw	6542	10RWD	Clutch Spring Holder			
5142	10559	Screw	6544	10RW3	Pressure Plate	4692	10LQ0	B-100 Oil (Accessory)

Please note that the number of adjusting washers may not be the same as shown in the exploded views.  
(Adjustment will vary with each individual product.)

(230403)\_008