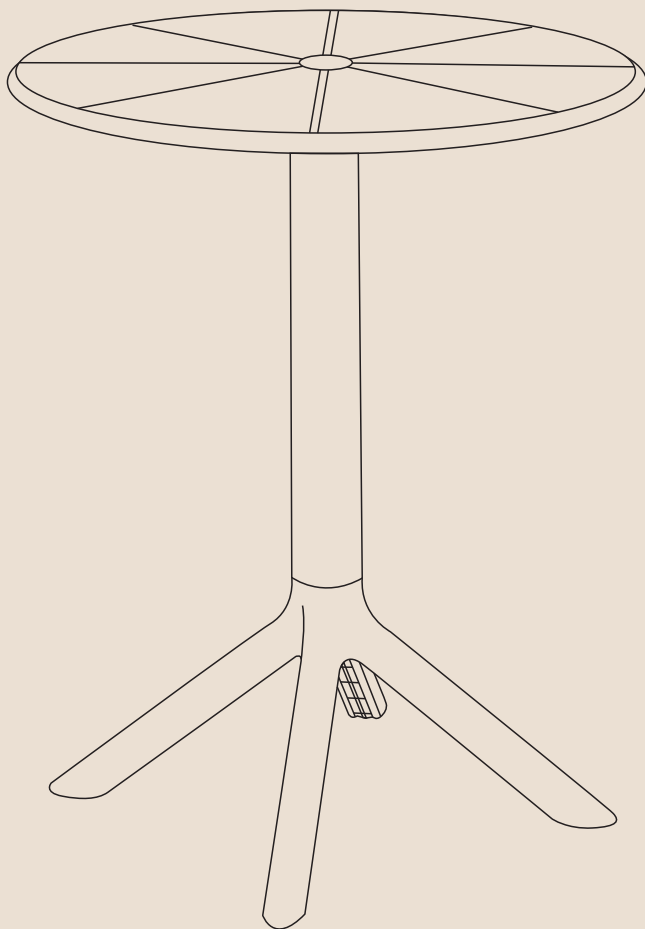




DESIGNED IN CALIFORNIA



---

23.5" OUTDOOR ROUND  
DINING TABLE

---

# THANK YOU!

We appreciate you for choosing WestinTrends!

Thank you for letting WestinTrends continue to offer accessible luxury trends, inspired by everyone!

---

## JOIN THE WESTINTRENDS COMMUNITY

Sign up here:

***<https://westintrends.com/welcome>***



---

## QUESTIONS OR COMMENTS?

If you have questions reach out to  
[cs@westintrends.com](mailto:cs@westintrends.com)

---

FOLLOW, SHARE, & LEARN



---

## PRODUCT REGISTRATION

***<https://westintrends.com/apps/product-registration>***



ACCESSIBILITY - COMMUNITY - VALUE - SUSTAINABILITY

## ! CARE & MAINTENANCE

- Be careful when assembly, avoid hurting the product.
- Clean the dust with lukewarm water, mild detergent & soft cloth.
- Firmly secure all bolts before use, do not use any part of this item as a step ladder.
- Reconfirm that all bolts, screws, and nuts are secure every 90 days.
- Do not use or store this item in the proximity of open flame or flammable/ combustible chemicals.

## TOOLS REQUIRED



ALLEN WRENCH  
(PROVIDED)



180 LBS  
CAPACITY



1 PERSON  
ASSEMBLY



UP TO 20 MIN.  
ASSEMBLY

## HARDWARE

1

BOLT  
M8x40mm



1 PC

## PARTS

A

TABLE TOP



1 PC

B

SUPPORT POST

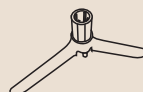


1 PC

C1

LEG I

with adjustable feet leveler



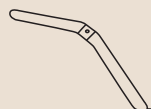
1 PC

adjustable feet leveler



C2

LEG II



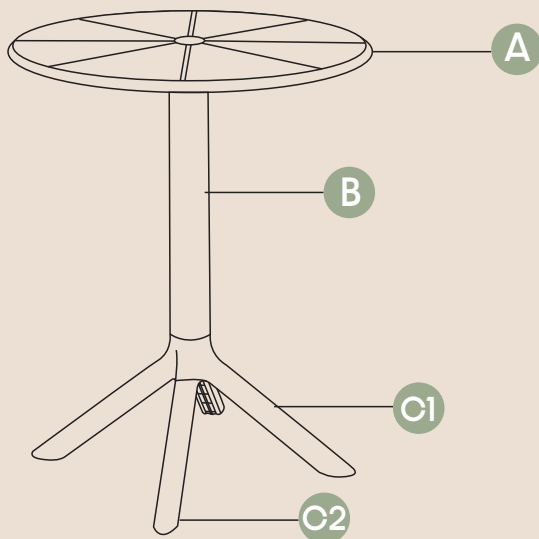
1 PC

adjustable feet leveler



## PRODUCT ASSEMBLY - OVERALL VIEW

Look at the overall view of this table and learn the exact position of each part to be assembled.

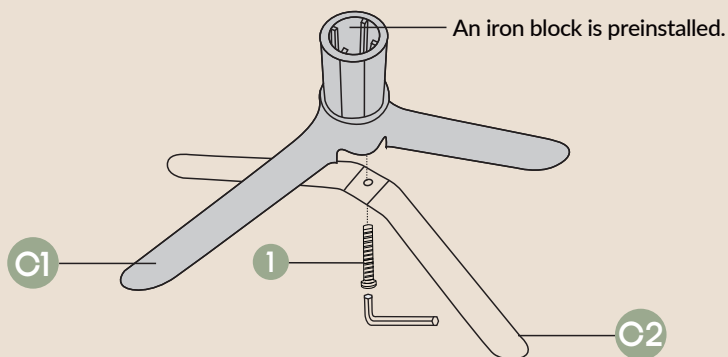


## PRODUCT ASSEMBLY

1

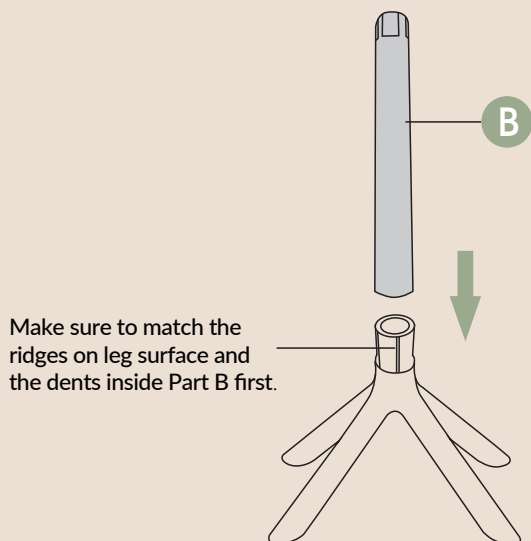
**Warning:** A heavy iron block is preinstalled inside the top of Part C1 Leg I.  
Please be careful to prevent injury.

Attach **Part C1 Leg I** on **Part C2 Leg II** with 1 pc of **Hardware #1 Bolt** by using allen wrench provided.



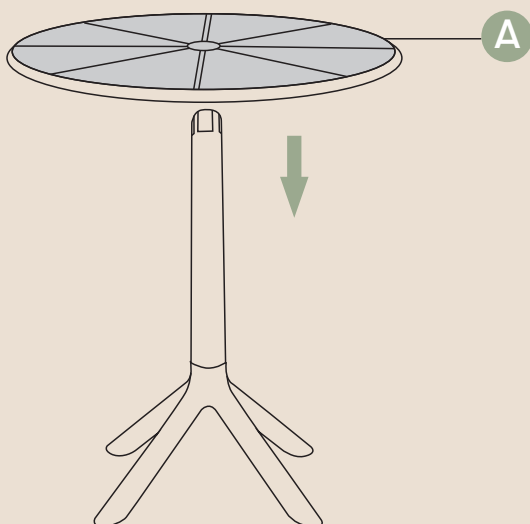
2

Insert **Part B Support Post** to the assembled legs firmly.



3

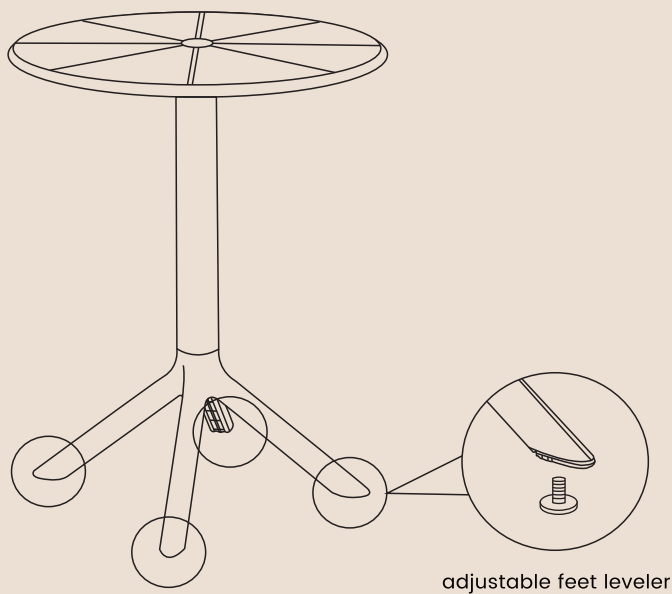
Attach **Part A Table Top** to the assembled legs firmly.



# 4

Adjust the feet levelers on the bottom of the legs for perfect balance.

Enjoy the table now.



## REGISTRATION & REFUND POLICY

<https://westintrends.com/apps/product-registration>



<https://westintrends.com/policies/refund-policy>



### HAVING TROUBLE

- **Not sure how to assemble or missing pieces?**

Please contact our Customer Service Team for assistance at [cs@westintrends.com](mailto:cs@westintrends.com)

**Have Order #, Part # or SKU ready to speed up customer service!**

### CLEANING TIPS

**REGULAR CLEAN:** Use a mixture of warm water and mild soap. Gently scrub the surface with a soft bristle brush to remove any dirt or stains.

**QUICK CLEAN:** You can simply wipe down the furniture with a damp cloth.

*Regular cleaning not only preserves the aesthetic appeal of your furniture but also helps extend its lifespan.*