

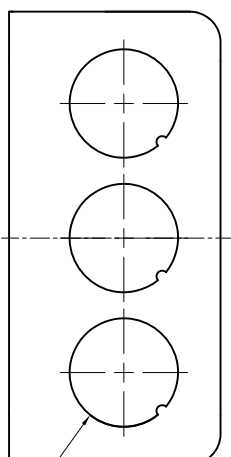
SIDES **BOTTOM**

12 3/4" KNOCKOUTS	6 KNOCKOUTS
	3 1/2" KNOCKOUTS
	2 3/4" KNOCKOUTS

Material: Steel-0.0625"-660 Galvanized

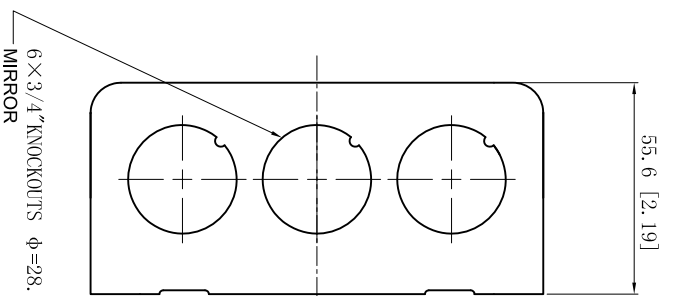
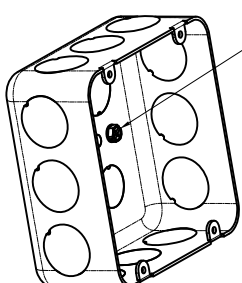
UL File #

E22445



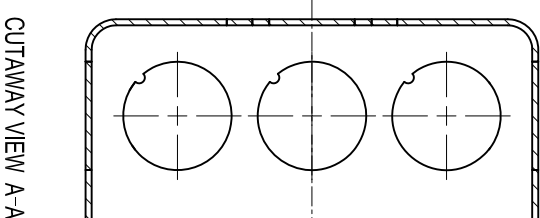
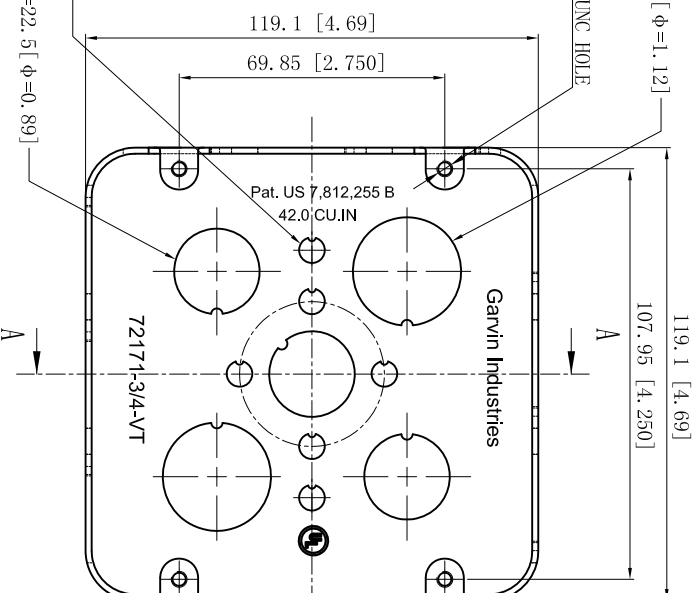
6 × 3/4" KNOCKOUTS φ=28.5 [φ=1.12]
MIRROR

#10-32



6 × 3/4" KNOCKOUTS φ=28.5 [φ=1.12]
MIRROR

6 × KNOCKOUTS φ=6.75 [φ=0.27]
3 × 1/2" KNOCKOUTS φ=22.5 [φ=0.89]



CUTAWAY VIEW A-A

This data sheet is for reference only. GARVIN INDUSTRIES reserves the right to make changes to the design without prior notice.

STANDARD PACKING

25 PCS

GARVIN INDUSTRIES

TITLE
4-11/16" SQUARE "DRAWN" BOXES (2-1/8" DEEP)

SIZE
A4

DWG NO.

72171-3/4VT

REV
C

DATA SHEET

DESCRIPTION

Patent #: Pat. US 7,812,255 B

TRADE REFERENCE TERMS