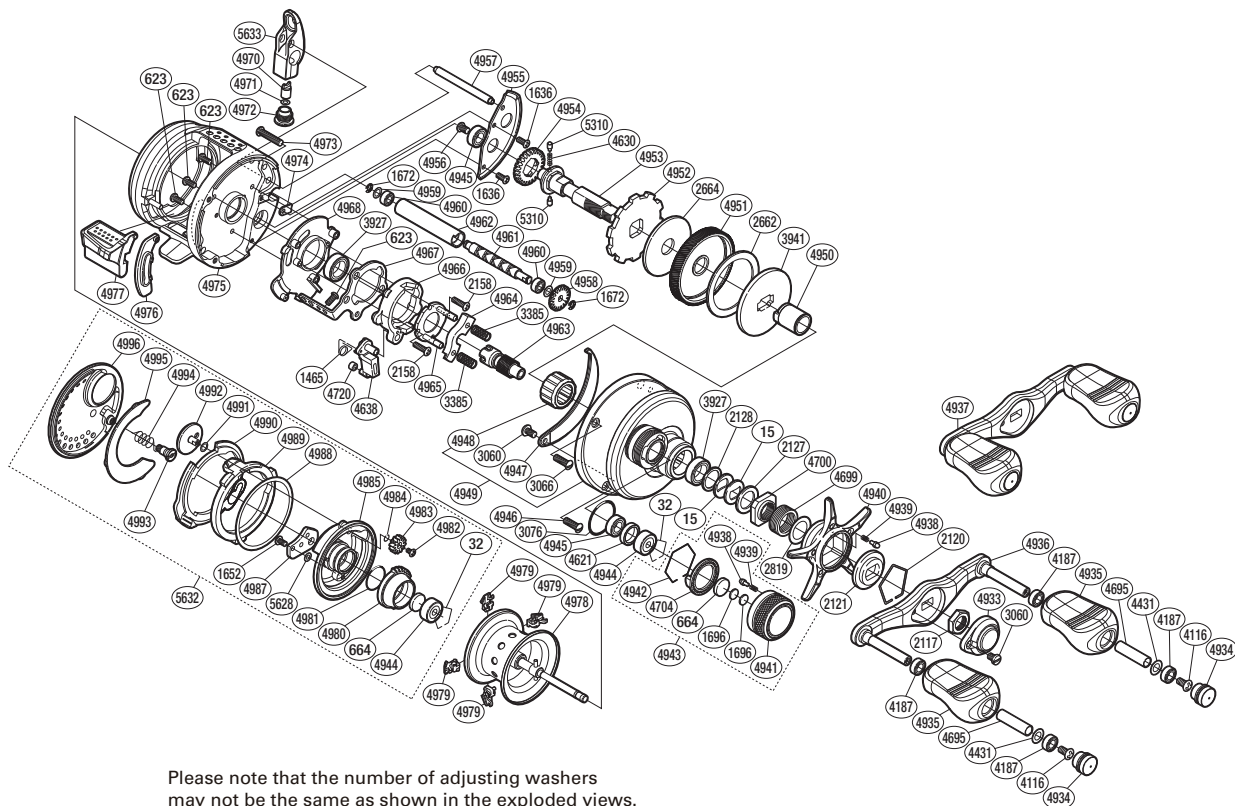


SHIMANO

CALCUTTA CONQUEST

S A-RB

CTCQ-100



Please note that the number of adjusting washers may not be the same as shown in the exploded views. (Adjustment will vary with each individual product.)

(51RH820100U)

Part No.	Description	Part No.	Description	Part No.	Description
BNT0015	Drag Spring Washer	BNT4933	Handle Nut Plate	BNT4968	Clutch Guard
BNT0032	Bearing Retainer	BNT4934	Handle Knob Seal	BNT4970	Line Guide Pawl
BNT0623	Screw	BNT4935	Handle Knob	BNT4971	Washer
BNT0664	Spacer B	BNT4936	Handle Shank Assembly	BNT4972	Pawl Cap
BNT1465	Clutch Pawl Spring	BNT4937	Handle Assembly	BNT4973	Screw
BNT1636	Screw	BNT4938	Click Pin	BNT4974	Worm Shaft Retainer
BNT1652	Screw	BNT4939	Click Spring	BNT4975	One-Piece Frame
BNT1672	E Lock	BNT4940	Star Drag	BNT4976	Clutch Bar Guide
BNT1696	Cast Control Spacer	BNT4941	Cast Control Cap	BNT4977	Clutch Lever
BNT2117	Handle Nut	BNT4942	Cast Control Click Holder	BNT4978	Spool Assembly
BNT2120	Click Plate Retainer	BNT4943	Cast Control Cap Assembly	BNT4979	Brake Shoe M
BNT2121	Star Drag Click	BNT4944	Ball Bearing	BNT4980	Brake Pipe Gear
BNT2127	Star Drag Spacer	BNT4945	Ball Bearing	BNT4981	O Ring
BNT2128	Bearing Washer	BNT4946	Screw	BNT4982	Screw
BNT2158	Screw	BNT4947	Set Plate Sticker	BNT4983	Br Dial Gear
BNT2662	Drag Washer	BNT4948	Roller Clutch Bearing	BNT4984	O Ring
BNT2664	Drag Washer	BNT4949	Right Side Plate	BNT4985	Brake Case
BNT2819	Washer	BNT4950	Roller Clutch Inner Tube	BNT4987	Damper Bush(A)
BNT3060	Screw	BNT4951	Drive Gear	BNT4988	Washer
BNT3066	Screw	BNT4952	Anti-Reverse Ratchet	BNT4989	Brake Case Cam
BNT3076	O Ring	BNT4953	Drive Shaft	BNT4990	Side Plate Cam Lever
BNT3385	Yoke Spring	BNT4954	Idle Gear	BNT4991	Washer
BNT3927	Ball Bearing	BNT4955	Drive Shaft Retainer	BNT4992	Br Dial
BNT3941	Key Washer	BNT4956	Screw	BNT4993	B Side Plate Insert
BNT4116	Screw	BNT4957	Level Wind Guide	BNT4994	Damper Spring
BNT4187	Ball Bearing	BNT4958	Idle Gear	BNT4995	B Side Plate Seal
BNT4431	Washer	BNT4959	Washer	BNT4996	Left Side Plate
BNT4621	Bearing Spacer	BNT4960	Ball Bearing	BNT5310	Idle Gear Pin
BNT4630	Idle Gear Spring	BNT4961	Worm Shaft	BNT5628	Washer
BNT4638	Clutch Pawl	BNT4962	Level Wind Guard	BNT5632	Left Side Plate Assembly
BNT4695	Handle Knob Pipe	BNT4963	Pinion Gear	BNT5633	Line Guide
BNT4699	Star Drag Spring	BNT4964	Yoke		
BNT4700	Star Drag Nut	BNT4965	Clutch Cam Retainer		
BNT4704	Cast Control Click Plate	BNT4966	Clutch Cam		
BNT4720	Clutch Pawl Bushing	BNT4967	Clutch Plate	BNT4692	B-100 Oil (accessory)