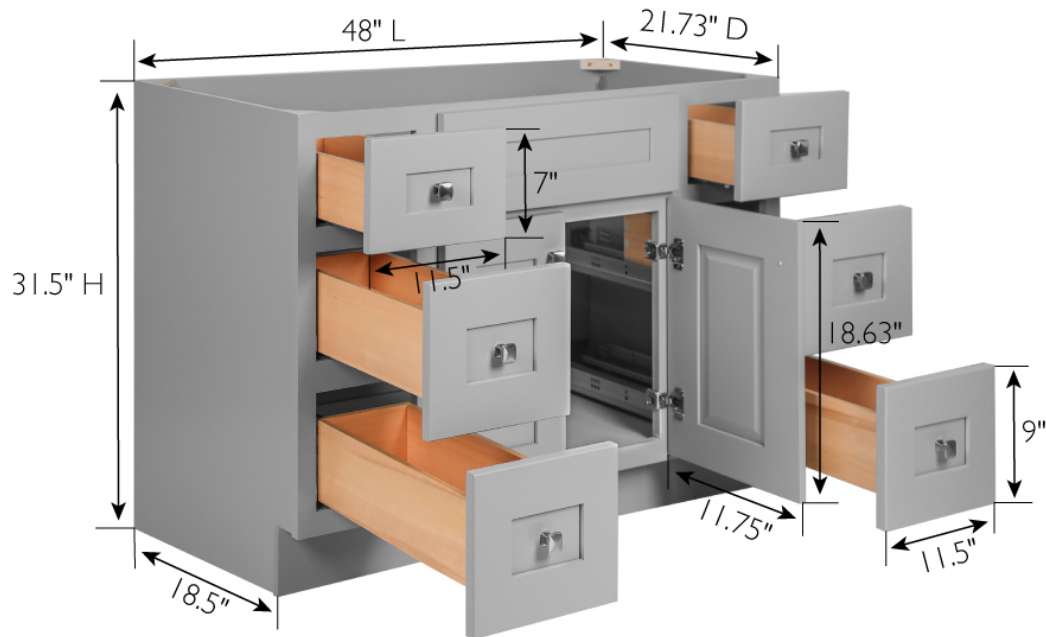


## Brookings Unassembled 2-Door, 6-Drawer Vanity 48x31.5x21

Gray



### SPECIFICATIONS

|  |  |
|--|--|
| <b>MATERIAL CONSTRUCTION:</b>          | Wood   |
| <b>ASSEMBLY REQUIRED:</b>              | Yes  |
| <b>TOOLS NEEDED FOR ASSEMBLY:</b>      | Phillips Screwdriver, Rubber Mallet, Wood Glue |
| <b>ASSEMBLED DIMENSIONS:</b>           | 31.5" H x 48" L x 21" D                        |
| <b>ASSEMBLED WEIGHT:</b>               | 101.42 lbs.                                    |
| <b>HINGE STYLE:</b>                    | Soft Close                                     |
| <b>DOOR STYLE:</b>                     | 2 Shaker Doors                                 |
| <b>DRAWER STYLE:</b>                   | 6 Drawers                                      |
| <b>GLIDE STYLE:</b>                    | Soft Close                                     |
| <b>FAKE DWR STYLE:</b>                 | N/A  |
| <b>DWR 1-2 DIMENSIONS:</b>             | 7" H x 11.5" L x 20.98" D                      |
| <b>DWR 3-6 DIMENSIONS:</b>             | 9" H x 11.5" L x 20.98" D                      |
| <b>DWR CONSTRUCTION:</b>               | Dove Tail                                      |
| <b>SHELF STYLE:</b>                    | N/A  |
| <b>SHELF ADJUSTABILITY INCREMENTS:</b> | N/A  |
| <b>SHELF MAX WEIGHT CAPACITY:</b>      | N/A  |
| <b>SHELF DIMENSIONS:</b>               | N/A  |
| <b>SHELF THICKNESS:</b>                | N/A  |
| <b>SHELF MATERIAL:</b>                 | N/A  |

|                              |            |
|------------------------------|------------|
| <b>FRAME STYLE:</b>          | Face Frame |
| <b>FACE FRAME MATERIAL:</b>  | Solid Wood |
| <b>SIDES MATERIAL:</b>       | Plywood    |
| <b>BOTTOM MATERIAL:</b>      | Plywood    |
| <b>TOE KICK INSET WIDTH:</b> | 4.5"       |
| <b>BACK PANEL MATERIAL:</b>  | Plywood    |
| <b>BACK BRACE MATERIAL:</b>  | Solid Wood |



|                                  |                         |
|----------------------------------|-------------------------|
| <b>WARRANTY:</b>                 | 1-Year limited warranty |
| <b>TITLE VI COMPLIANT:</b>       | Yes                     |
| <b>PROP 65 HARMFUL MATERIAL:</b> | Formaldehyde            |



TYPE:  
JOB:  
ORDER CODE:  
APPROVALS: