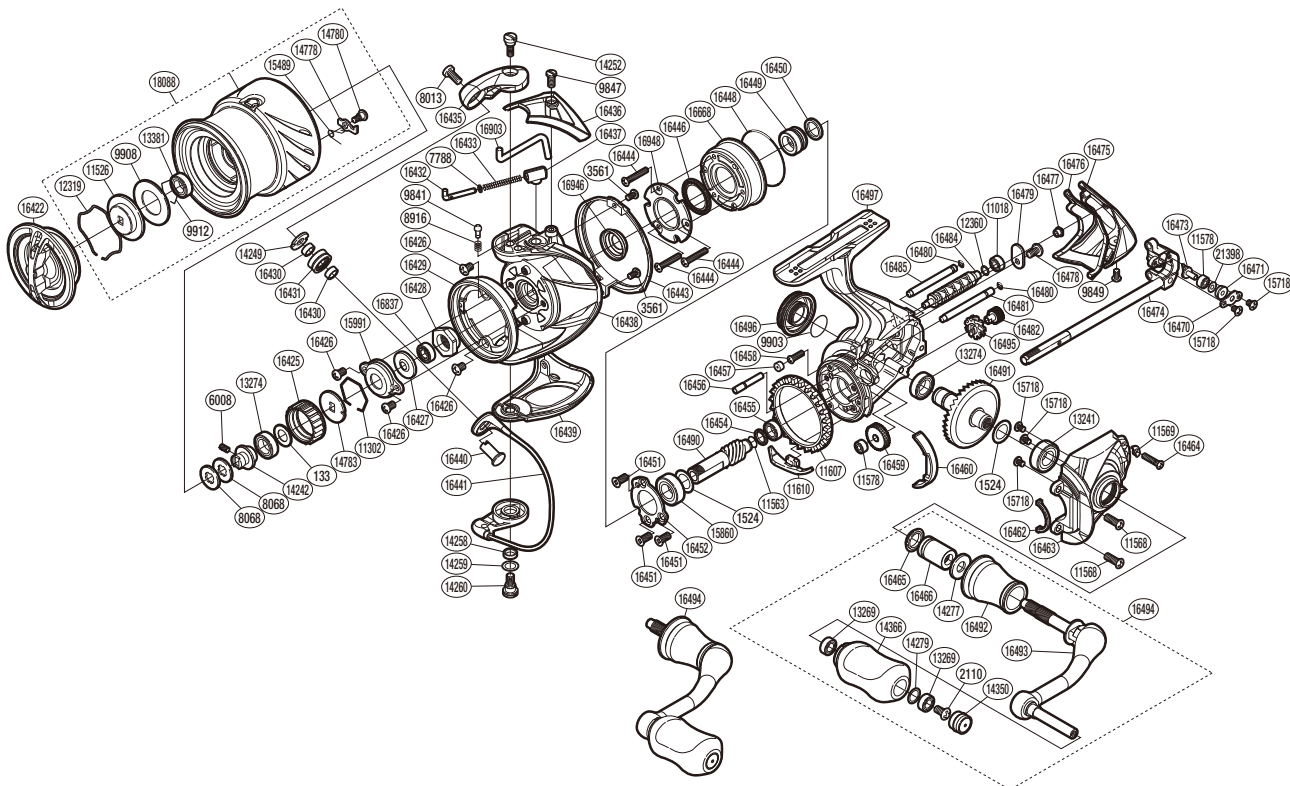


SHIMANO

STELLA

STL-2500HGS



(51SE41E027X)

#	Part No.	Description	#	Part No.	Description	#	Part No.	Description
133	102VD	Anti-Reverse Pawl Spacer	14366	1042B	Handle Knob	16460	10J3N	Friction Ring Spacer
1524	10JDC	Washer	14778	10388	Drag Click	16462	10CBC	Flange Water Proof
2110	103E9	Screw	14780	10A6F	Screw	16463	104D4	Side Cover
3561	10MT4	Screw	14783	103PC	Spool Support	16464	10LV4	Screw
6008	10PN2	Set Screw	15489	10BQE	Drag Click Spring	16465	10PXU	Handle Shaft Seal
7788	1064R	Spring Guide (A) Support	15718	1055G	Screw	16466	10PQE	Handle Shaft Cover B
8013	10K40	Screw	15860	104JH	Ball Bearing	16470	10HAG	Oscillating Pawl Cover
8068	10BU7	Spool Washer	15991	1076P	Rotor Nut Lock Plate	16471	10JXQ	Oscillating Slider Bushing
8916	10CH0	Click Spring	16422	102ER	Drag Knob	16473	106VL	Oscillating Pawl
9841	10CHA	Click Pin	16425	107PP	Drag Click Ratchet	16474	102J0	Main Shaft Assembly
9847	10CYU	Screw	16426	103LB	Screw	16475	10NL4	Rear Protector
9849	106ZG	Screw	16427	107L2	Bearing Water Proof	16476	107HJ	Rear Shield
9903	108WA	O Ring	16428	10814	Rotor Nut	16477	10AYN	Rear Protector Collar
9908	102ZP	Drag Washer	16429	10JHK	Rotor Brim	16478	103EB	Screw
9912	10GEW	Bearing Retainer	16430	10GAR	Bearing Spacer	16479	10ATB	Worm Shaft Retainer
11018	10PDA	Ball Bearing	16431	10KXZ	Line Roller	16480	10JAB	O Ring
11302	107V3	Ratchet Spring	16432	105YY	Bail Spring Guide A	16481	104MB	Oscillating Guide B
11526	10B9X	Key Washer	16433	105R4	Bail Spring	16482	106VQ	Idle Gear B S
11563	10CJV	Worm Shaft Ring	16435	10KLQ	Bail Arm	16484	10687	Worm Shaft
11568	10M2C	Screw	16436	10885	Bail Spring Cover	16485	1035L	Oscillating Guide A
11569	10C2G	Screw Washer	16437	107A9	Bail Spring Seat	16490	10C1Z	Pinion Gear
11578	10PC0	Ball Bearing	16438	10Q1P	Rotor	16491	10EKM	Drive Gear
11607	104FU	Friction Ring	16439	10MNJ	Bail Hold Support Guard	16492	10C4E	Handle Shaft Cover
11610	107DZ	Bail Trip Strike	16440	10Q3J	Line Roller Support	16493	103DN	Handle Shank Assembly
12319	10B8J	Drag Washers Retainer	16441	1073K	Bail Assembly	16494	10N7S	Handle Assembly
12360	10J7K	Washer	16443	10748	Rotor Guard	16495	10CQH	Idle Gear B L
13241	104JD	Ball Bearing	16444	10MTG	Screw	16496	10N4H	Handle Screw Cap
13269	104VX	Ball Bearing	16446	10MH3	Roller Clutch Water Proof	16497	1037C	Body
13274	104PP	Ball Bearing	16448	10MLT	O Ring	16668	10QPJ	Roller Clutch Assembly
13381	104JT	Ball Bearing	16449	107S5	Roller Clutch Inner	16837	103B1	Main Shaft Spacer
14242	10LTR	Bearing Bushing	16450	10H4G	Roller Clutch Inner Spacer	16903	106KU	Bail Trip Lever
14249	1079U	Line Roller Plate	16451	10ML6	Screw	16946	103SG	Rotor Ring
14252	109GS	Screw	16452	10593	Bearing Retainer	16948	10NHU	Roller Clutch Reinforce
14258	10K55	Bail Trip Cam Bushing	16454	10J6F	Pinion Gear Spacer	18088	10R65	Spool Assembly
14259	10G6C	Washer	16455	104K4	Ball Bearing	21398	10RKQ	Washer
14260	109GU	Screw	16456	10CLA	Idle Gear B Shaft			
14277	10FMF	Large Handle Shank Washer	16457	10AYS	Body Flange Seal			
14279	10G8G	Washer	16458	10LPJ	Screw			
14350	10BFB	Handle Knob Seal	16459	10HBQ	Idle Gear	9811	10PBS	Reel Seat Spacer (Accessory)

Please note that the number of adjusting washers may not be the same as shown in the exploded views.
(Adjustment will vary with each individual product.)