

# AQUASPEC<sup>®</sup> FAUCETS

MODEL - Z84100 SERIES  
SERVICE SINK FAUCET



## TECHNICAL INFORMATION

---

**FLOW:** 2.2 GPM [8.3 L] PRESSURE COMPENSATING AERATOR \*

**MAXIMUM PRESSURE:** 125 PSI

**MAXIMUM TEMPERATURE:** 180° F

**HANDLE NUT TORQUE:** 15-20 FT - LBS.

**CARTRIDGE STYLE:** QUARTER TURN CERAMIC DISK

\* OTHER AERATORS AVAILABLE BY REQUEST

---

**⚠ WARNING:** Cancer and Reproductive Harm - [www.P65Warnings.ca.gov](http://www.P65Warnings.ca.gov)

**⚠ ADVERTENCIA:** Cáncer y daño reproductivo - [www.P65Warnings.ca.gov](http://www.P65Warnings.ca.gov)

**⚠ AVERTISSEMENT:** Cancer et effets néfastes sur la reproduction - [www.P65Warnings.ca.gov](http://www.P65Warnings.ca.gov)

---

## INSTALLATION INSTRUCTIONS

1. 1/2" IP NIPPLE SHOULD PROTRUDE 1/2" - 7/8" FROM THE FINISHED WALL. ON 4" TO 8 3/8" CENTERS, PIPES SHOULD BE SECURED TO SUPPORT THE FAUCET.
  2. PLACE ESCUTCHEON (ITEM #6) OVER PIPE NIPPLE AND SCREW SUPPLY ARM (ITEM #5A) ONTO PIPE. POSITION SUPPLIES SO THAT THE BODY CONNECTIONS END UP AT 4" CENTERS ON A HORIZONTAL PLANE.
  3. SUPPLY ARMS ARE FURNISHED WITH INTEGRAL SUPPLY STOPS. TO SHUT WATER OFF, SCREW STOP IN USING 5/32" ALLEN WRENCH. OPEN STOP NO MORE THAN 5 COMPLETE TURNS. STOP CAN UNSCREW COMPLETELY CAUSING WATER TO SPRAY FROM STOP OPENING.
  4. INSERT VALVE BODY (ITEM #4) TO SUPPLY ARMS PLACING GASKET (ITEM #5C) BETWEEN BODY AND SUPPLY ARM.
  5. ASSEMBLE SPOUT TO VALVE BODY USING HARDWARE.
  6. TURN WATER SUPPLY ON AND OPERATE FAUCET CHECKING FOR LEAKS.
  7. IT MAY BE NECESSARY TO SHUT WATER OFF AND REMOVE CARTRIDGES TO CLEAN SUPPLY LINES. CARTRIDGES CAN BE REMOVED BY FIRST REMOVING THE HANDLES. COLOR INDEXES CAN BE REMOVED BY INSERTING A PIN INTO THE HOLE ON THE UNDERSIDE OF THE HANDLE. AFTER THE HANDLES HAVE BEEN REMOVED, UNSCREW AND REMOVE THE HANDLE NUTS (ITEM #1) THEN PULL OUT THE CARTRIDGE. ZURN WILL SUPPLY HANDLE PORT PLUGS (ZURN PART #61094001) AT YOUR REQUEST.
  8. REPLACE CARTRIDGES IN BODY AND HAND TIGHTEN HANDLE NUTS. PLACE HANDLES ON THE CARTRIDGE STEM AND LOCATE THEM AS DESIRED. TIGHTEN HANDLE NUTS.
  9. REPLACE HANDLE SCREWS AND COLOR INDEX BUTTONS.
  10. INSTALL AERATOR, IF REQUIRED, INTO FAUCET AND HAND TIGHTEN. IT MAY BE NECESSARY TO UNSCREW AND CLEAN AERATOR AT START-UP.
- 

### CAUTION-FOR INSTALLATIONS WITH ATMOSPHERIC VACUUM BREAKERS (AVB'S).

THIS DEVICE SHOULD NEVER BE USED IN INSTALLATIONS THAT ARE UNDER CONTINUOUS PRESSURE WHEN INSTALLED WITH SPOUTS HAVING ATMOSPHERIC VACUUM BREAKERS (AVB'S). THEREFORE, NEVER PLACE A SELF-CLOSING, SHUT-OFF OR CHECK VALVE DOWNSTREAM OF AN AVB.

# MAINTENANCE

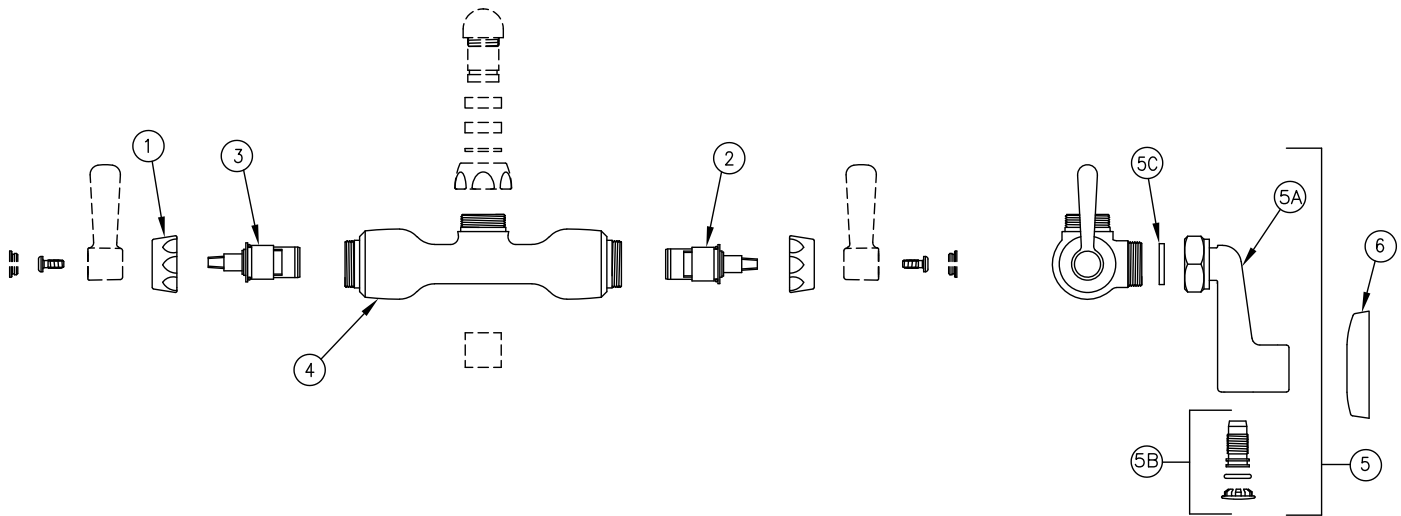
1. YOUR ZURN AQUASPEC FAUCET HAS A HIGHLY POLISHED NICKEL CHROME PLATED FINISH. CLEAN WITH SOAP AND WATER OR A MILD CLEANER WHICH IS SAFE FOR CHROME PLATING. DO NOT USE ACIDS OR TOILET BOWL CLEANER AS THEY WILL DAMAGE THE FINISH.

2. AQUASPEC FAUCETS CONTAIN CERAMIC DISK CARTRIDGES WHICH REQUIRE NO MAINTENANCE. TO REMOVE THE CARTRIDGE, SHUT THE WATER OFF, LOOSEN THE HANDLE NUTS AND PULL UP ON THE CARTRIDGE.

# REPLACEMENT PARTS

COLD WATER CARTRIDGE	59517001
HOT WATER CARTRIDGE	59517002
INDEX BUTTONS	G60500

## Z841F1 PICTURED



## Z84100 PARTS LIST

Item	Part Number	Description	Qty.
1	59523001	HANDLE NUT	2
2	59517002	SHORT HOT CARTRIDGE	1
3	59517001	SHORT COLD CARTRIDGE	1
4	59464001	BODY	1
5	G60528	LONG SUPPLY ARM & INTEGRAL STOP ASS'Y.	2
5A	60810003	LONG SUPPLY ARM	1
5B	G60527	SCREWDRIVER INTEGRAL STOP ASS'Y.	1
	59536001	STOP PLUG	1
	58155013	O-RING	1
	59667001	HOLE PLUG	1
5C	59748001	GASKET	2
6	G65300	ESCUTCHEON ASS'Y.	2