

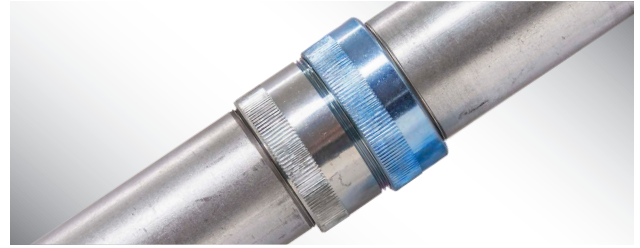
Super Kwik-Couple™ GRC

Super Kwik-Couple™ GRC Raintight

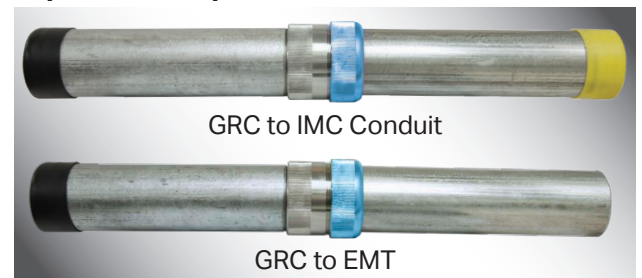
Super Kwik-Couple™ GRC Conduit (SKC)

- Similar benefits of GRC conduit
 - High grade durable and ductile steel for long life
 - Corrosion resistant exterior and interior finishes
 - Super Kwik-Couple™ GRC is listed to UL safety standards 6 & 514B and manufactured in accordance with ANSI C80.1.
 - Eliminates field threading - Factory installed patented Super Kwik-Couple™ connects to both threaded and unthreaded material
 - Connect GRC to GRC, IMC, EMT, or PVC*
 - Reduces Material Cost - no separate couplings to purchase, store, carry, or install
 - Reduces labor cost - quick and easy installations
 - Compact design allows for easier installation in tight spaces
 - Super Kwik-Couple™ coupling can be easily removed from the conduit and reinstalled in seconds using standard tongue and groove pliers or a strap wrench
 - Listed for wet locations (Raintight)
 - Permitted for use in Class 1 Division 2 locations per Section 501-10(B)(1) of the NEC®
 - Available in sizes ½"- 5"
- ** Super Kwik-Couple™ GRC is not approved for Class 1 Division 1
* 5" Raintight is not approved without threads or for use with PVC

Quality, Long Lasting Heavy Duty Steel Conduit



For Faster Installations Use the Super Kwik-Couple™ GRC Connection



* U.S. Patent Number: 8,586,881

Galvanized Rigid Conduit (GRC)

Listed to UL 6, manufactured in accordance with ANSI C80.1



Trade Size	Outside Diameter ¹	Nominal Wall Thickness ²	Approximate Weight Per 100 Feet		Bundle Quantity
			Dry (lb)	Raintight (lb)	
(in)	(in)	(in)			(ft)
½	0.84	0.104	82	83	1600
¾	1.05	0.107	109	110	1260
1	1.315	0.126	161	162	840
1¼	1.66	0.133	219	220	700
1½	1.9	0.138	264	265	600
2	2.375	0.146	350	351	450
2½	2.875	0.193	558	559	400
3	3.5	0.205	725	726	300
3½	4	0.215	871	872	250
4	4.5	0.225	1035	1036	200
5	5.563	0.245	1407	1414	150

¹Tolerances: Trade Size ½" to 1½" ±0.015"; Trade Size 2-5: ±1%.

²For information only. Not a requirement of the UL standard.

Available in dry and wet location

Project Information

Company Name _____
 Address _____
 City _____
 State & Zip _____
 Phone _____
 Project Name _____
 City _____
 State _____

Super Kwik-Couple™ Elbows Available
Trade Size ½" to 5" by special order
Single & Double Sided

EC&M
Product of the Year
2019 Category Winner

NOTE: Special orders are non-cancelable, non-returnable and non-refundable.
alliedeg.com

Super Kwik-Couple™ GRC

Super Kwik-Couple™ GRC Raintight

FEATURES & SPECIFICATIONS

Full Electrical System Protection

Allied Tube & Conduit® Super Kwik-Couple™ GRC conduit is manufactured from mild steel and is highly resistant to damage from impact yet ductile to facilitate bending.

Color-coded end cap thread protectors keep the threads clean, sharp and also provide instant trade size recognition. Even sizes are color-coded blue, 1/2" sizes black, and 1/4" sizes red.

Coatings

Conduit: Hot-dip galvanized inside and out providing galvanic corrosion protection. In addition, top coated with a compatible organic layer to protect against white rust. The inside surface is evenly coated for wire-pulling ease, even through multiple 90° bends.

Coupling: Electro-galvanized inside and out to provide galvanic corrosion protection.

EMI Shielding

Allied Tube & Conduit® GRC Conduit is effective in reducing the effects of electromagnetic field levels for encased power distribution circuits, shielding computers and other sensitive electronic equipment from the effects of electromagnetic interference.

Codes & Standards Compliance

Allied Tube & Conduit® Super Kwik-Couple™ GRC Conduit is precision manufactured for dependable, long-lasting value and ultimate protection for electrical conductors. Covered by Article 344 of the National Electrical Code® (NEC)®, GRC conduit is highly resistant to damage from impact. GRC conduit is recognized as an equipment grounding conductor in Section 250.118 of the NEC®. Super Kwik-Couple™ Rigid is listed to UL Safety Standard 6 and UL 514-B. Super Kwik-Couple Rigid is listed for Concrete-tight applications only. Super Kwik-Couple™ Rigid Raintight is listed for wet location applications. It is also manufactured to ANSI C80.1, both of which have been adopted as Federal Specifications in lieu of WWC 581. Installation of Rigid Metal Conduit shall be in accordance with the National Electrical Code® (NEC)® and UL General Information card #DYIX. Master bundles conform to NEMA standard RN2.

Specification Data

To specify, Super Kwik-Couple™ GRC Conduit include the following: GRC Conduit shall be hot-dip galvanized and manufactured by Allied Tube & Conduit®. Threads shall be protected after cutting. GRC shall be listed to UL Safety Standard 6 by a nationally-recognized testing laboratory with follow up service. It shall be manufactured in accordance with ANSI C80.1.



Super Kwik-Couple™ GRC shall be listed to UL 6 and UL 514B and manufactured in accordance with ANSI C80.1.

Note: Federal specification WW-C-581, Class 1, Type A has been superseded by UL Standard 6, which has been adopted by the Federal Government.