

# From design to delivery

Find hundreds of innovative solutions to help your customers expand their design capabilities on this interactive tool from 3M.

## ELECTRONICS



## Innovative Solutions for the Electronic Industry

With consumers' insatiable desire for electronics that are lighter, thinner, smaller and more energy efficient, as well as more stylish and elegant, it's no wonder that electronics designers have increasingly turned to 3M for solutions. Our portfolio of electronics manufacturing and assembly solutions can give you the tools you need to bring your designs to life.



Click on a **red dot** below to learn more about 3M solutions for each of the electronic devices below.

PHONE



TABLET



NOTEBOOK



TELEVISION



## Phone

Higher resolution screens, more capabilities, more flexibility, more of just about everything is where cell phone design is heading today. With space and weight and battery power almost always an issue, 3M solutions that can help pack more technology into ever-smaller spaces can help make designers' lives easier.

### ADHESIVE

• TAPE • LIQUID • BOTH

Home Button Attachment

Protective Film

Lens Bonding

Gasket Bonding

Battery Bonding

Repositionable Part Bonding

FPC Attachment

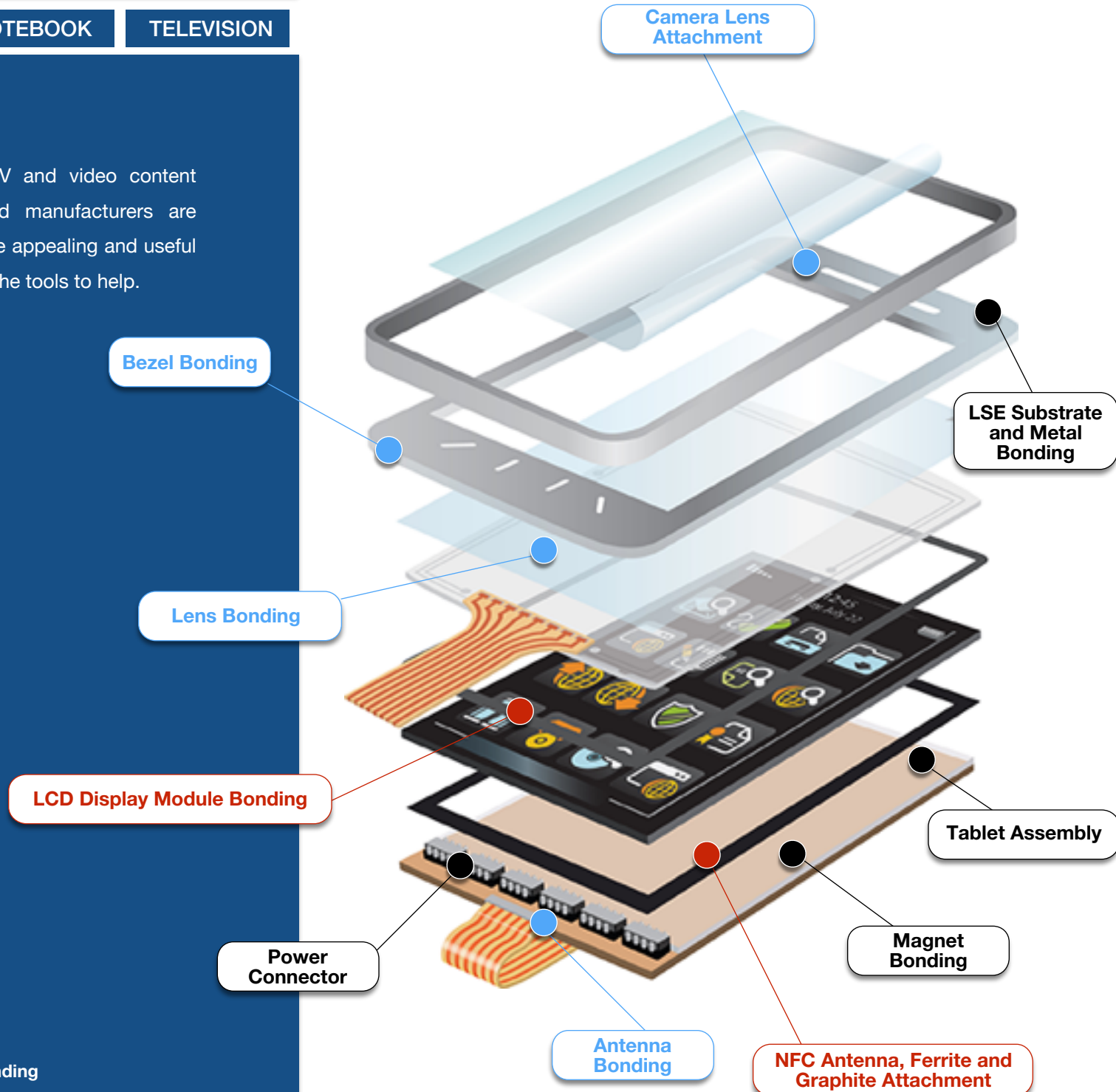


## Tablet

Tablets are rapidly taking over app, TV and video content consumption, especially at home, and manufacturers are looking for ways to make them even more appealing and useful for consumers. 3M technologies provide the tools to help.

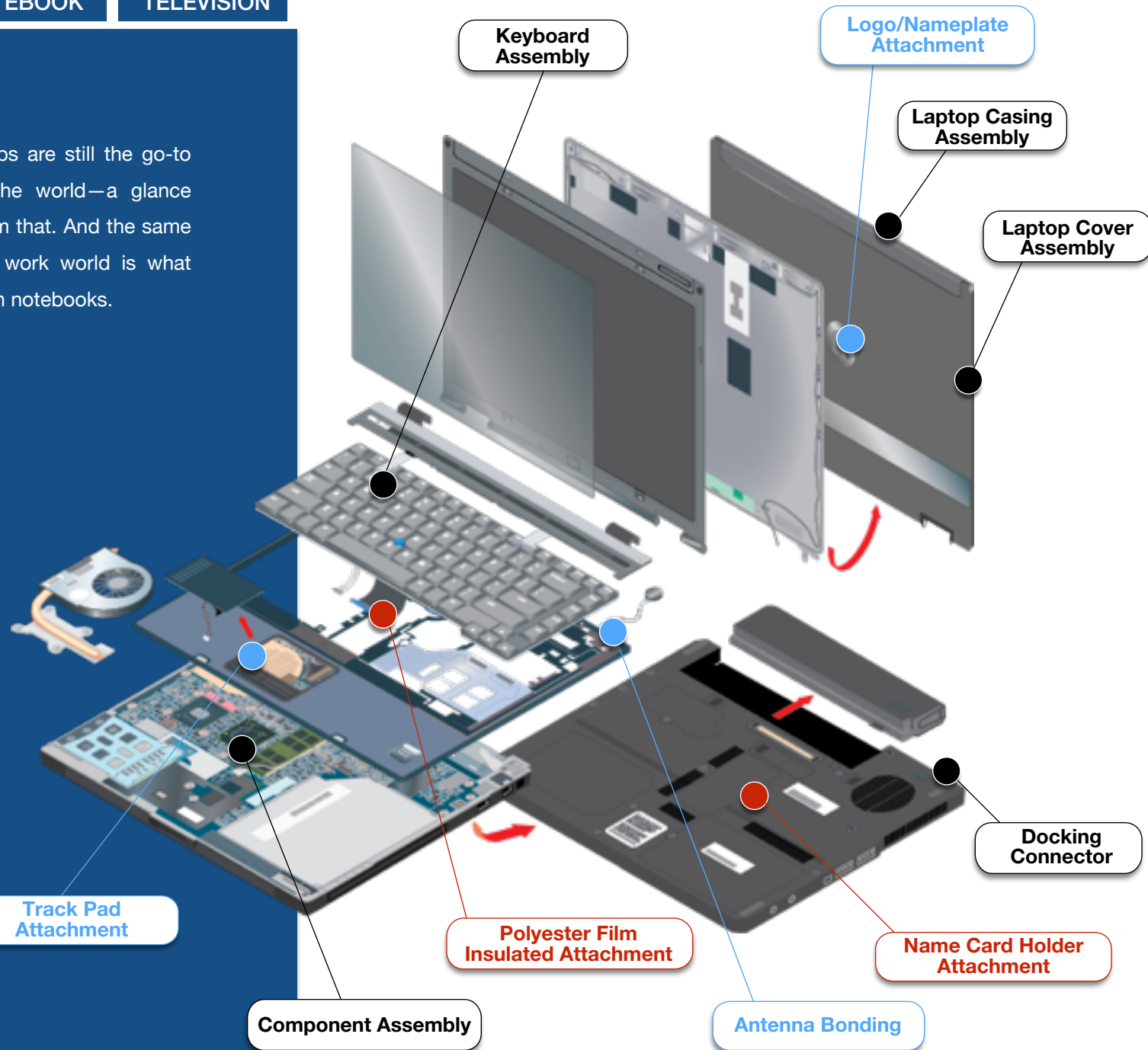
**ADHESIVE**  
 • TAPE • LIQUID • BOTH

To find out more go to [3M.com/electronicbonding](http://3M.com/electronicbonding)



## Notebook

Lightweight, powerful and portable, laptops are still the go-to tools of mobile professionals all over the world—a glance around a coffee shop anywhere will confirm that. And the same attributes that make notebooks rule the work world is what makes 3M technologies so indispensable in notebooks.



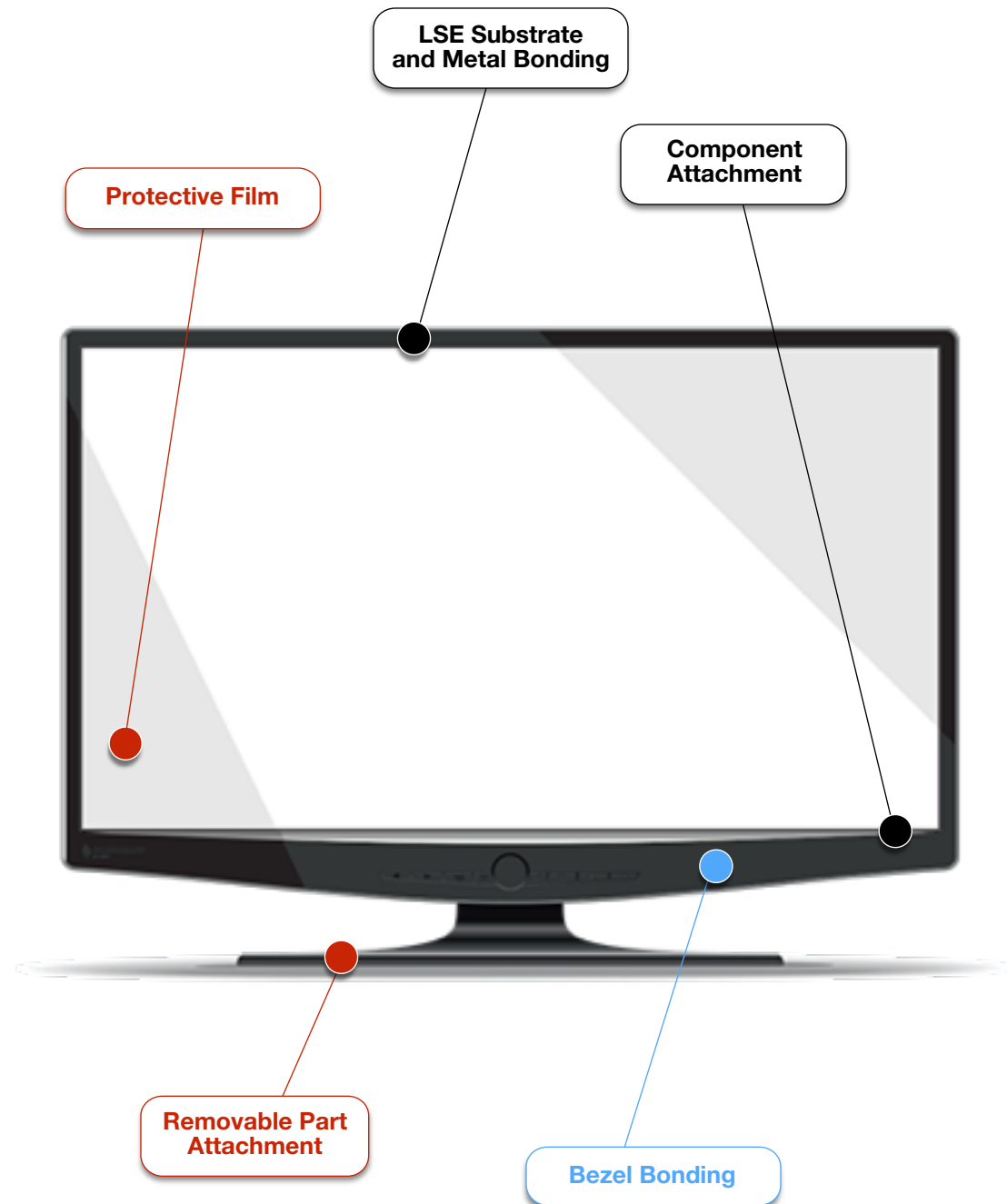
## Television

Despite consumers' increasing tendency to watch videos, movies and network programming on smaller devices such as phones, tablets and laptops, the television is still the focal point of most living rooms. To make sure it stays there, manufacturers are continuing to make TVs that are bigger, smarter, thinner, higher definition and more stylish than ever—with the help of 3M technologies.

### ADHESIVE

• TAPE • LIQUID • BOTH

To find out more go to [3M.com/electronicbonding](http://3M.com/electronicbonding)



PHONE

TABLET

NOTEBOOK

TELEVISION



**ADHESION LEVEL KEY: GOOD: + BETTER: ++ BEST: +++**  
Testing for specific applications is suggested.

## Lens Bonding

TAPE COMPONENTS						"WOW" Features	ADHESION BY SUBSTRATES						OTHER PROPERTY			
Tape Product No.	Thickness (mm)	Adhesive Family	Color	Types of Adhesive	Liner		Steel, Aluminum, Glass, Ceramics, Anodized Aluminum, Nickel	High Surface Energy	Low Surface Energy	Silicone	Graphite Film	Foam, Microcellular, Urethane	Push Out	Drop Test	Cleavage	High Temp
82220B	0.20	Acrylic	Black	LSE	PCK	Good for LSE	+	+	+++	++	++	++	++	++	+	+
82320B	0.20	Acrylic	Black	Flexible	PCK	Drop performance	+	++	++	++	+++	++	+++	+	+	+
5906	0.15	Acrylic Foam	Black	Acrylic Foam	PET	Caliper range & adhesion	+++	+++	++	+++	++	+++	+++	+++	+++	+++
5907	0.20	Acrylic Foam	Black	Acrylic Foam	PET	Caliper range & adhesion	+++	+++	++	+++	++	+++	+++	+++	+++	+++
5908	0.25	Acrylic Foam	Black	Acrylic Foam	PET	Caliper range & adhesion	+++	+++	++	+++	++	+++	+++	+++	+++	+++
5909	0.30	Acrylic Foam	Black	Acrylic Foam	PET	Caliper range & adhesion	+++	+++	++	+++	++	+++	+++	+++	+++	+++
5915	0.40	Acrylic Foam	Black	Acrylic Foam	Film/Paper	Caliper range & adhesion	+++	+++	+	+	+++	++	+++	+++	+++	+++

PHONE

TABLET

NOTEBOOK

TELEVISION



ADHESION LEVEL KEY: GOOD: + BETTER: ++ BEST: +++

Testing for specific applications is suggested.

## Lens Bonding

Adhesive Product No.	Handling Time (minutes)	Work Life (minutes)	ADHESIVE KEY FEATURES				"WOW" Features	ADHESION BY SUBSTRATES					OTHER PROPERTY				
			Chemistry Family	Halogen Content	Color	Mix Ratio		Steel, Aluminum, Glass, Ceramics, Anodized Aluminum, Nickel	High Surface Energy	Low Surface Energy	Silicone	Foam, Microcellular, Urethane	Peel	Push Out	Drop Test	Cleavage	High Temp Resistance
2665	1.5 - 4	1 - 4	1-part Urethane Reactive Hot melt	LH	White	no mixing	Great drop resistance, soft, high tack, easily reworkable	+++	+++	+		+++	+++	+++	+++	++	
3692B	2 - 8	2 - 8	1-part Urethane Reactive Hot melt	LH	Black	no mixing	Ideal for jet dispense and gap filling, high strength, long open time, reworkable	+++	+++	+		+++	+++	+++	+++	++	
DP8805LH	6 - 7	3 - 4	2-part Acrylic	LH	Green	10:1	Low odor, low halogen, thin bond line, great drop resistance, high strength, fast fixture time	+++	+++			++	+++	+++	+++	+++	
DP8405NS	14 - 16	4 - 6	2-part Acrylic	LH	Green	10:1	Thin bond line, superb drop resistance, high strength, fast fixture time	+++	+++			++	+++	+++	+++	+++	
DP8805	7*	4	Low Odor Acrylic	TBD	Green	0.417361111	Exceptionally fast cured and low odor and toughened	+++	+++	+	+	++	++		+++	+++	
DP8405	12	5	MMA	TBD	Green	0.417361111	High impact resistant and fast cure	+++	+++**	+	+	++	+++		++	+++	

\*Immediate handling at 60°C for 60 sec.

\*\*Best for polycarbonate.



PHONE

TABLET

NOTEBOOK

TELEVISION



## Battery Bonding

ADHESION LEVEL KEY: GOOD: + BETTER: ++ BEST: +++

Testing for specific applications is suggested.

TAPE COMPONENTS						"WOW" Features	ADHESION BY SUBSTRATES					OTHER PROPERTY			
Tape Product No.	Thickness (mm)	Adhesive Family	Color	Types of Adhesive	Liner		Steel, Aluminum, Glass, Ceramics, Anodized Aluminum, Nickel	High Surface Energy	Low Surface Energy	Silicone	Graphite Film	Foam, Microcellular, Urethane	Push Out	Drop Test	Cleavage
6657-100	0.10	Acrylic	Clear	Stretch release	PET	Stretch release, shock absorption, clean removal	+++	+++	+++	+++	+++	++	++	++	++
6657-120	0.12	Acrylic	Black	Stretch release	PET	Stretch release, shock absorption, clean removal	+++	+++	+++	+++	+++	++	++	++	++
6657-150	0.15	Acrylic	Clear	Stretch release	PCK Liner with 3M Logo	Stretch release, clean removal	+++	+++	+++	+++	+++	++	++	++	++
SR-5620	0.20	Acrylic	Clear	Firm	PCK	Reworkable	+++	+++	+	+	+	++	++	++	++

ADHESIVE KEY FEATURES							"WOW" Features	ADHESION BY SUBSTRATES					OTHER PROPERTY			
Adhesive Product No.	Handling Time (minutes)	Work Life (minutes)	Chemistry Family	Halogen Content	Color	Mix Ratio		Steel, Aluminum, Glass, Ceramics, Anodized Aluminum, Nickel	High Surface Energy	Low Surface Energy	Silicone	Foam, Microcellular, Urethane	Peel	Push Out	Drop Test	Cleavage
1090	0.5	0.5	1-part Urethane Reactive Hot melt	LH	White	no mixing	Short green strength time	+++	+++	+	+++	+++	+++	+++	+++	++
1090B	0.5	0.5	1-part Urethane Reactive Hot melt	LH	Black	no mixing	Short green strength time									
DP605NS	15	5	Urethane	LH	Off White	1:01	Flexible and non-sag	+	++	+	++	++			++	+
DP605	15	5	2-part Urethane	LH	Off White	1:1	Tough, flexible, fast setting	+++	+++		+++		+++	+++	+++	+++
DP604	20	4	2-part Urethane	LH	Black	1:1	Flexible, fast setting, bond and seal	+++	+++		+++		+++	+++	+++	+++

To find out more go to [3M.com/electronicbonding](https://www.3m.com/electronicbonding)

PHONE

TABLET

NOTEBOOK

TELEVISION



## Gasket Bonding

ADHESION LEVEL KEY: GOOD: + BETTER: ++ BEST: +++

Testing for specific applications is suggested.

TAPE COMPONENTS						"WOW" Features	ADHESION BY SUBSTRATES					OTHER PROPERTY			
Tape Product No.	Thickness (mm)	Adhesive Family	Color	Types of Adhesive	Liner		Steel, Aluminum, Glass, Ceramics, Anodized Aluminum, Nickel	High Surface Energy	Low Surface Energy	Silicone	Graphite Film	Foam, Microcellular, Urethane	Push Out	Drop Test	Cleavage
55256	0.05	Acrylic	Clear	Standard	55#SCK	Bonds well to foam & plastics	++	++	++	++	++	+	+	++	++
82600	0.005	Acrylic	Clear	Standard	Clear PET Liner & Plastic Core	Very thin, good for graphite bonding	++	++	++	+++	++	+	+	++	++
82601	0.01	Acrylic	Clear	Standard	Clear PET Liner & Plastic Core	Very thin, good for LCD backlight module application	++	++	++	+++	++	+	+	++	++
82603	0.03	Acrylic	Clear	Standard	Clear PET Liner & Plastic Core	Thin, good for LCD backlight module application	+++	+++	+++	+++	+++	++	++	++	++
UCT-10	0.01	Acrylic	Clear	Firm	PET	Good anti-lifting	+++	+++	+++	+++	++	++	++	++	++
UCT-30	0.03	Acrylic	Clear	Firm	PET	Good anti-lifting	+++	+++	+++	+++	++	++	++	++	++
93004LE	0.04	300LSE	Clear	LSE	PCK	Good chemical resistance	+++	+++	+++	+++	++	++	++	+	++
93004LEB	0.04	300LSE	Black	LSE	PCK	Good chemical resistance	+++	+++	+++	+++	++	++	++	+	++
93005LE	0.05	300LSE	Clear	LSE	PCK	Good chemical resistance	+++	+++	+++	+++	+	++	++	+	++
93005LEB	0.05	300LSE	Black	LSE	PCK	Good chemical resistance	+++	+++	+++	+++	+	++	++	+	++

To find out more go to [3M.com/electronicbonding](http://3M.com/electronicbonding)

PHONE

TABLET

NOTEBOOK

TELEVISION



## FPC Attachment

ADHESION LEVEL KEY: GOOD: + BETTER: ++ BEST: +++

Testing for specific applications is suggested.

TAPE COMPONENTS						"WOW" Features	ADHESION BY SUBSTRATES					OTHER PROPERTY			
Tape Product No.	Thickness (mm)	Adhesive Family	Color	Types of Adhesive	Liner		Steel, Aluminum, Glass, Ceramics, Anodized Aluminum, Nickel	High Surface Energy	Low Surface Energy	Silicone	Graphite Film	Foam, Microcellular, Urethane	Push Out	Drop Test	Cleavage
467MP	0.058	200MP	Clear	Firm	58#PCK	High temperature shear and thin	+++	+++		+++	++	+++	+	+++	+++
468MP	0.13	200MP	Clear	Firm	58#PCK	Good to bond around curve, high temperature shear	+++	+++		+++	++	+++	+	+++	+++
82600	0.005	Acrylic	Clear	Standard	PET	Very thin	++	++	++	+++	++	+	+	++	++
82601	0.01	Acrylic	Clear	Standard	PET	Very thin	++	++	++	+++	++	+	+	++	++
82603	0.03	Acrylic	Clear	Standard	PET	Very thin	++	++	++	+++	++	++	++	++	++
9629PC	0.10	360	Clear	Standard	58#PCK	Quick bonding	++	+++	+++	+++	+++	++	+	++	+
9628FL	0.05	360	Clear	Standard	PET	Quick bonding	++	+++	+++	+++	+++	++	+	++	+
F9460PC	0.05	100MP	Clear	Firm	PCK	High temperature resistance	+++			+++	+	++	++	++	+++
9077	0.05	100HT	Translucent	Firm	PK	High temperature resistance, for solder reflow	+++			+++	+	++	++	++	+++
UCT-30	0.03	Acrylic	Clear	Firm	PET	Good anti-lifting	+++	+++	+++	+++	++	++	++	++	++
UCT-50	0.05	Acrylic	Clear	Firm	PET	Good anti-lifting	+++	+++	+++	+++	++	++	++	++	++

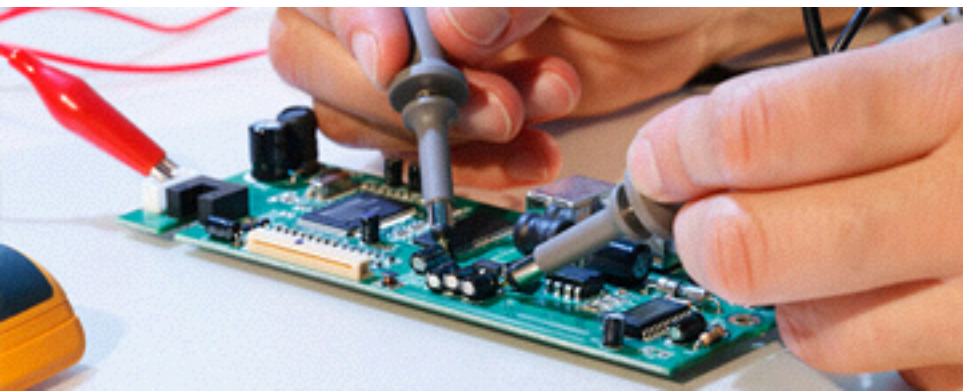
To find out more go to [3M.com/electronicbonding](https://www.3m.com/electronicbonding)

PHONE

TABLET

NOTEBOOK

TELEVISION



ADHESION LEVEL KEY: GOOD: + BETTER: ++ BEST: +++

Testing for specific applications is suggested.

## Repositionable Part Bonding

TAPE COMPONENTS						"WOW" Features	ADHESION BY SUBSTRATES					OTHER PROPERTY				
Tape Product No.	Thickness (mm)	Adhesive Family	Color	Types of Adhesive	Liner		Steel, Aluminum, Glass, Ceramics, Anodized Aluminum, Nickel	High Surface Energy	Low Surface Energy	Silicone	Graphite Film	Foam, Microcellular, Urethane	Push Out	Drop Test	Cleavage	High Temp
9415PC	0.05	400/1000	Clear	Differential	PCK	Removeability, low tack/high tack	+++	+++	+++	+++	+++					++
9425HT	0.13	420/1050	Clear	Differential	PCK	Clean removeability, medium tack/high tack	+++	+++	+++	+++	+++					+++

To find out more go to [3M.com/electronicbonding](https://www.3m.com/electronicbonding)

PHONE

TABLET

NOTEBOOK

TELEVISION



## Home Button Attachment

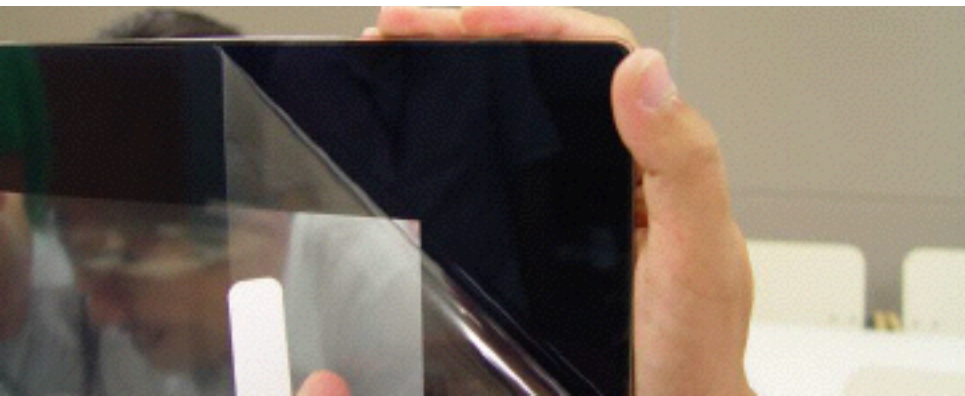
ADHESION LEVEL KEY: GOOD: + BETTER: ++ BEST: +++

Testing for specific applications is suggested.

TAPE COMPONENTS						"WOW" Features	ADHESION BY SUBSTRATES						OTHER PROPERTY			
Tape Product No.	Thickness (mm)	Adhesive Family	Color	Types of Adhesive	Liner		Steel, Aluminum, Glass, Ceramics, Anodized Aluminum, Nickel	High Surface Energy	Low Surface Energy	Silicone	Graphite Film	Foam, Microcellular, Urethane	Push Out	Drop Test	Cleavage	High Temp
9731-050	0.05	350/Silicone	Clear	Differential	PCK/PET	Highest temp & chem resistance	++/+	++/+	++/+	+////	++/+	+/	+	+	+	++
9731-100	0.10	350/Silicone	Clear	Differential	PCK/PET	Highest temp & chem resistance	++++/+	++++/+	++++/+	+////	++++/+	++/	+	+	+	++
9731	0.14	350/Silicone	Clear	Differential	PCK/PET	Highest temp & chem resistance	++++/+	++++/+	++++/+	+////	++++/+	++/	+	+	+	++
9119-050	0.05	Acrylic/Silicone	Clear	Differential	PCK/PET	Highest Si/rubber adhesion	++/+	++/+	++/+	+////	++/+	+/	+	+	+	++
9119-100	0.10	Acrylic/Silicone	Clear	Differential	PCK/PET	Highest Si/rubber adhesion	++++/+	++++/+	++++/+	+////	++++/+	++/	+	+	+	++
9119-140	0.14	Acrylic/Silicone	Clear	Differential	PCK/PET	Highest Si/rubber adhesion	++++/+	++++/+	++++/+	+////	++++/+	++/	+	+	+	++
9831-050	0.05	350/Silicone	Clear	Differential	PCK/PET	Good chemical resistance	++/+	++++/+	++/+	+////	++/+	++++/	+	+	+	++

ADHESIVE KEY FEATURES							"WOW" Features	ADHESION BY SUBSTRATES					OTHER PROPERTY			
Adhesive Product No.	Handling Time (minutes)	Work Life (minutes)	Chemistry Family	Halogen Content	Color	Mix Ratio		Steel, Aluminum, Glass, Ceramics, Anodized Aluminum, Nickel	High Surface Energy	Low Surface Energy	Silicone	Foam, Microcellular, Urethane	Push Out	Drop Test	Cleavage	High Temp Resistance
DP8805LH	6 - 7	3 - 4	2-part Acrylic	LH	Green	10:1	Low odor, low halogen, thin bond line, great drop resistance, high strength, fast fixture time	+++	+++		++	+++	+++	+++	+++	
3692B	2 - 8	2 - 8	1-part Urethane Reactive Hot melt	LH	Black	no mixing	Ideal for jet dispense and gap filling, high strength, long open time, reworkable	+++	+++	+	+++	+++	+++	+++	++	

To find out more go to [3M.com/electronicbonding](https://www.3m.com/electronicbonding)



## Protective Film

ADHESION LEVEL KEY: GOOD: + BETTER: ++ BEST: +++

Testing for specific applications is suggested.

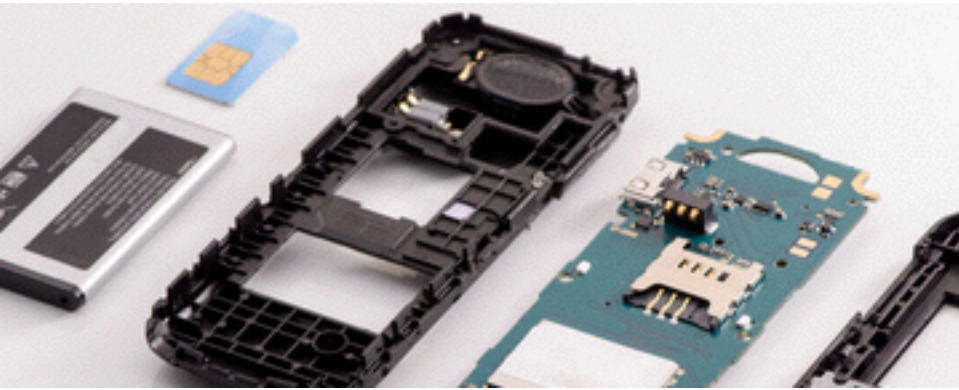
TAPE COMPONENTS						"WOW" Features	ADHESION BY SUBSTRATES						OTHER PROPERTY			
Tape Product No.	Thickness (mm)	Adhesive Family	Color	Types of Adhesive	Liner		Steel, Aluminum, Glass, Ceramics, Anodized Aluminum, Nickel	High Surface Energy	Low Surface Energy	Silicone	Graphite Film	Foam, Microcellular, Urethane	Push Out	Drop Test	Cleavage	High Temp
87630A	0.063	Acrylic	Clear	Acrylic	PET Backing	Great wet-out	+++	+++	++							

PHONE

TABLET

NOTEBOOK

TELEVISION



ADHESION LEVEL KEY: GOOD: + BETTER: ++ BEST: +++

Testing for specific applications is suggested.

## Low Surface Energy Substrate and Metal Bonding

ADHESIVE KEY FEATURES							"WOW" Features	ADHESION BY SUBSTRATES					OTHER PROPERTY				
Adhesive Product No.	Handling Time (minutes)	Work Life (minutes)	Chemistry Family	Halogen Content	Color	Mix Ratio		Steel, Aluminum, Glass, Ceramics, Anodized Aluminum, Nickel	High Surface Energy	Low Surface Energy	Silicone	Foam, Microcellular, Urethane	Peel	Push Out	Drop Test	Cleavage	High Temp Resistance
DP8010	120	10	LSE Acrylic	Low	Off White	10:1	Structurally bonds LSE plastic without primer	++	+++	+++	+	++	++		+++ (with HDPE)	++	

PHONE

TABLET

NOTEBOOK

TELEVISION



## Tablet Assembly

ADHESION LEVEL KEY: GOOD: + BETTER: ++ BEST: +++

Testing for specific applications is suggested.

Adhesive Product No.	Handling Time (minutes)	Work Life (minutes)	ADHESIVE KEY FEATURES				"WOW" Features	ADHESION BY SUBSTRATES					OTHER PROPERTY				
			Chemistry Family	Halogen Content	Color	Mix Ratio		Steel, Aluminum, Glass, Ceramics, Anodized Aluminum, Nickel	High Surface Energy	Low Surface Energy	Silicone	Foam, Microcellular, Urethane	Peel	Push Out	Drop Test	Cleavage	High Temp Resistance
DP8805	7*	4	Low Odor Acrylic	TBD	Green	0.417361111	Exceptionally fast cured and low odor and toughened	+++	+++	+	+	++	++		+++	+++	
DP8405	12	5	MMA	TBD	Green	0.417361111	High impact resistant and fast cure	+++	+++**	+	+	++	+++		++	+++	

\*Immediate handling at 60°C for 60 sec.

\*\*Best for polycarbonate.

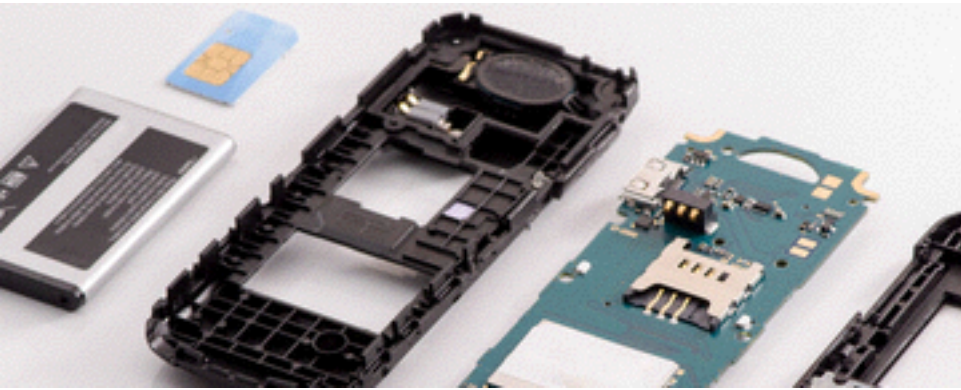


PHONE

TABLET

NOTEBOOK

TELEVISION



ADHESION LEVEL KEY: GOOD: + BETTER: ++ BEST: +++

Testing for specific applications is suggested.

## Magnet Bonding

Adhesive Product No.	Handling Time (minutes)	Work Life (minutes)	ADHESIVE KEY FEATURES				"WOW" Features	ADHESION BY SUBSTRATES					OTHER PROPERTY				
			Chemistry Family	Halogen Content	Color	Mix Ratio		Steel, Aluminum, Glass, Ceramics, Anodized Aluminum, Nickel	High Surface Energy	Low Surface Energy	Silicone	Foam, Microcellular, Urethane	Peel	Push Out	Drop Test	Cleavage	High Temp Resistance
DP810	10	10	Low Odor Acrylic	Low	Tan	1.1	Low odor and toughened	+++	+++	+	+	++	++		+++	++	
DP8805	7*	4	Low Odor Acrylic	TBD	Green	0.417361111	Exceptionally fast cured and low odor and toughened	+++	+++	+	+	++	++		+++	+++	
DP8405	12	5	MMA	TBD	Green	0.417361111	High impact resistant and fast cure	+++	+++**	+	+	++	+++		++	+++	

\*Immediate handling at 60°C for 60 sec.

\*\*Best for polycarbonate.

PHONE

TABLET

NOTEBOOK

TELEVISION



## NFC Antenna, Ferrite and Graphite Attachment

ADHESION LEVEL KEY: GOOD: + BETTER: ++ BEST: +++

Testing for specific applications is suggested.

TAPE COMPONENTS						"WOW" Features	ADHESION BY SUBSTRATES					OTHER PROPERTY			
Tape Product No.	Thickness (mm)	Adhesive Family	Color	Types of Adhesive	Liner		Steel, Aluminum, Glass, Ceramics, Anodized Aluminum, Nickel	High Surface Energy	Low Surface Energy	Silicone	Graphite Film	Foam, Microcellular, Urethane	Push Out	Drop Test	Cleavage
82600	0.005	Acrylic	Clear	Standard	Clear PET Liner & Plastic Core	Very thin, good for graphite bonding	++	++	++	+++	++	+	+	++	++
82601	0.01	Acrylic	Clear	Standard	Clear PET Liner & Plastic Core	Very thin, good for LCD backlight module application	++	++	++	+++	++	+	+	++	++
82603	0.03	Acrylic	Clear	Standard	Clear PET Liner & Plastic Core	Thin, good for LCD backlight module application	+++	+++	+++	+++	+++	++	++	++	++
87500	0.005	Acrylic	Black	Standard	PET	Very thin	++	++	++	+++	++	++	++	++	++
87501	0.01	Acrylic	Black	Standard	PET	Very thin	++	++	++	+++	++	++	++	++	++
UCT-10	0.01	Acrylic	Clear	Firm	PET	Good anti-lifting	+++	+++	+++	+++	++	++	++	++	++
UCT-30	0.03	Acrylic	Clear	Firm	PET	Good anti-lifting	+++	+++	+++	+++	++	++	++	++	++
UCT-50	0.05	Acrylic	Clear	Firm	PET	Good anti-lifting	+++	+++	+++	+++	++	++	++	++	++
93004LE	0.04	300LSE	Clear	LSE	PCK	Good chemical resistance	+++	+++	+++	+++	++	++	++	+	++
93005LE	0.05	300LSE	Clear	LSE	PCK	Good chemical resistance	+++	+++	+++	+++	++	++	++	+	++

(875XX is single coated black tape)

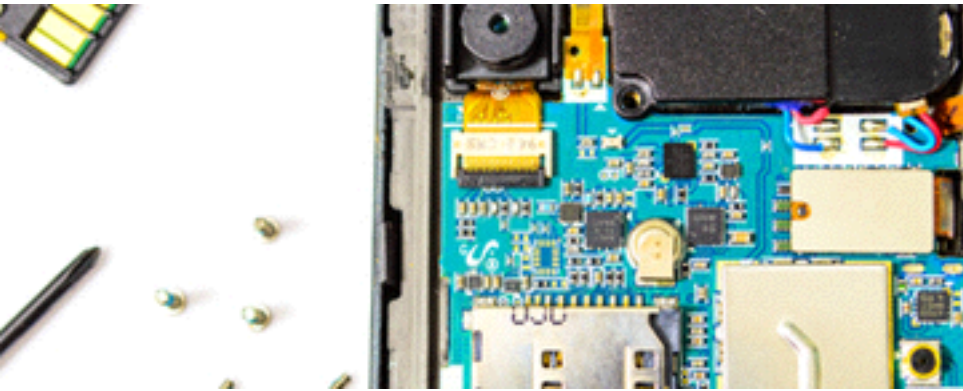
To find out more go to [3M.com/electronicbonding](https://www.3m.com/electronicbonding)

PHONE

TABLET

NOTEBOOK

TELEVISION



ADHESION LEVEL KEY: GOOD: + BETTER: ++ BEST: +++

Testing for specific applications is suggested.

## Antenna Bonding

Tape Product No.	Thickness (mm)	Adhesive Family	TAPE COMPONENTS			"WOW" Features	ADHESION BY SUBSTRATES					OTHER PROPERTY				
			Color	Types of Adhesive	Liner		Steel, Aluminum, Glass, Ceramics, Anodized Aluminum, Nickel	High Surface Energy	Low Surface Energy	Silicone	Graphite Film	Foam, Microcellular, Urethane	Push Out	Drop Test	Cleavage	High Temp
SR-5630	0.30	Acrylic	Clear	Firm	PCK	Reworkable	+++	+++	+	+	+	+	++	++	++	++
467MP	0.058	200MP	Clear	Firm	58#PCK	High temperature shear and thin	+++	+++			+++	++	+++	+	+++	+++
468MP	0.13	200MP	Clear	Firm	58#PCK	Good to bond around curve, high temperature shear	+++	+++			+++	++	+++	+	+++	+++
82110	0.10	Acrylic	Clear	Firm	PCK	Reliability	+++	+++	+		+	+	+	+	+	+
82115	0.15	Acrylic	Clear	Firm	PCK	Reliability	+++	+++	+		+	+	+	+	+	+
UCT-10	0.01	Acrylic	Clear	Firm	PET	Good anti-lifting	+++	+++	+++		+++	++	++	++	++	++
UCT-30	0.03	Acrylic	Clear	Firm	PET	Good anti-lifting	+++	+++	+++		+++	++	++	++	++	++
UCT-50	0.05	Acrylic	Clear	Firm	PET	Good anti-lifting	+++	+++	+++		+++	++	++	++	++	++
93004LE	0.04	300LSE	Clear	LSE	PCK	Good chemical resistance	+++	+++	+++		+++	++	++	++	+	++
93005LE	0.05	300LSE	Clear	LSE	PCK	Good chemical resistance	+++	+++	+++		+++	++	++	++	+	++
9471LE	0.05	300LSE	Clear	LSE	58#PCK	Low surface energy bonding	+++	+++	+++		+++	++	+++	++	+++	++

To find out more go to [3M.com/electronicbonding](https://www.3m.com/electronicbonding)

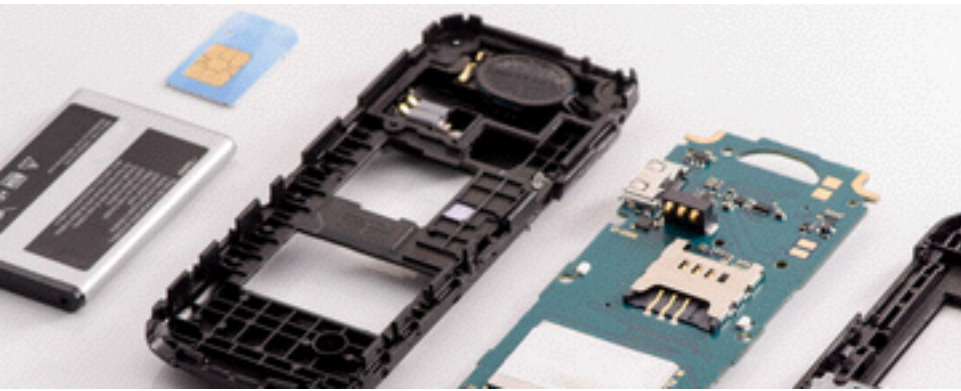
[More Antenna Bonding](#)

PHONE

TABLET

NOTEBOOK

TELEVISION



ADHESION LEVEL KEY: GOOD: + BETTER: ++ BEST: +++

Testing for specific applications is suggested.

## Antenna Bonding

Adhesive Product No.	Handling Time (minutes)	Work Life (minutes)	ADHESIVE KEY FEATURES				"WOW" Features	ADHESION BY SUBSTRATES					OTHER PROPERTY					
			Chemistry Family	Halogen Content	Color	Mix Ratio		Steel, Aluminum, Glass, Ceramics, Anodized Aluminum, Nickel	High Surface Energy	Low Surface Energy	Silicone	Foam, Microcellular, Urethane	Peel	Push Out	Drop Test	Cleavage	High Temp Resistance	
2665	1.5 - 4	1 - 4	1-part Urethane Reactive Hot melt	LH	White	no mixing	Great drop resistance, soft, high tack, easily reworkable	+++	+++	+		+++			+++	+++	+++	++
3692B	2 - 8	2 - 8	1-part Urethane Reactive Hot melt	LH	Black	no mixing	Ideal for jet dispense and gap filling, high strength, long open time, reworkable	+++	+++	+		+++			+++	+++	+++	++
DP8805LH	6 - 7	3 - 4	2-part Acrylic	LH	Green	10:1	Low odor, low halogen, thin bond line, great drop resistance, high strength, fast fixture time	+++	+++			++			+++	+++	+++	+++
DP810	10	10	Low Odor Acrylic	Low	Low	1.1	Low odor and toughened	+++	+++	++	+	+		++			++	++
DP8805	7*	4	Low Odor Acrylic	TBD	Green	0.417361111	Exceptionally fast cured and low odor and toughened	+++	+++	++	+	+		++			++	+++
DP8405	12	5	MMA	TBD	Green	0.417361111	High impact resistant and fast cure	+++	+++**	++	+	+		+++			++	+++

\*Immediate handling at 60°C for 60 sec.

\*\*Best for polycarbonate.

To find out more go to [3M.com/electronicbonding](https://www.3m.com/electronicbonding)

PHONE

TABLET

NOTEBOOK

TELEVISION



## Power Connector

ADHESION LEVEL KEY: GOOD: + BETTER: ++ BEST: +++

Testing for specific applications is suggested.

Adhesive Product No.	Handling Time (minutes)	Work Life (minutes)	ADHESIVE KEY FEATURES				"WOW" Features	ADHESION BY SUBSTRATES					OTHER PROPERTY				
			Chemistry Family	Halogen Content	Color	Mix Ratio		Steel, Aluminum, Glass, Ceramics, Anodized Aluminum, Nickel	High Surface Energy	Low Surface Energy	Silicone	Foam, Microcellular, Urethane	Peel	Push Out	Drop Test	Cleavage	High Temp Resistance
DP8805	7*	4	Low Odor Acrylic	TBD	Green	0.417361111	Exceptionally fast cured and low odor and toughened	+++	+++	+	+	++	++		++		+++
DP8405	12	5	MMA	TBD	Green	0.417361111	High impact resistant and fast cure	+++	+++**	+	+	++	+++			++	+++
DP100+	20	5	Epoxy	High	Clear	1:01	Fast cure, flexible and clear	+++	++	+	+	++	++			++	+
DP420 LH	120	20	Epoxy	Low	Off White	2:01	Low halogen, toughened and best fatigue performance	+++	++	+	+		+++			+++	++

\*Immediate handling at 60°C for 60 sec.

\*\*Best for polycarbonate.

PHONE

TABLET

NOTEBOOK

TELEVISION



## LCD Display Module Bonding

ADHESION LEVEL KEY: GOOD: + BETTER: ++ BEST: +++

Testing for specific applications is suggested.

TAPE COMPONENTS						"WOW" Features	ADHESION BY SUBSTRATES					OTHER PROPERTY			
Tape Product No.	Thickness (mm)	Adhesive Family	Color	Types of Adhesive	Liner		Steel, Aluminum, Glass, Ceramics, Anodized Aluminum, Nickel	High Surface Energy	Low Surface Energy	Silicone	Graphite Film	Foam, Microcellular, Urethane	Push Out	Drop Test	Cleavage
82600	0.005	Acrylic	Clear	Standard	Clear PET Liner & Plastic Core	Very thin, good for graphite bonding	++	++	++	+++	++	+	+	++	++
82601	0.01	Acrylic	Clear	Standard	Clear PET Liner & Plastic Core	Very thin, good for LCD backlight module application	++	++	++	+++	++	+	+	++	++
82603	0.03	Acrylic	Clear	Standard	Clear PET Liner & Plastic Core	Thin, good for LCD backlight module application	+++	+++	+++	+++	+++	++	++	++	++
93004LE	0.04	300LSE	Clear	LSE	PCK	Good chemical resistance	+++	+++	+++	+++	++	++	++	+	++
93004LEB	0.04	300LSE	Clear	LSE	PCK	Good chemical resistance	+++	+++	+++	+++	++	++	++	+	++
93005LE	0.05	300LSE	Clear	LSE	PCK	Good chemical resistance	+++	+++	+++	+++	+	++	++	+	++
93005LEB	0.05	300LSE	Clear	LSE	PCK	Good chemical resistance	+++	+++	+++	+++	+	++	++	+	++
93010LE	0.10	Acrylic	Clear	LSE	PCK	Low surface energy bonding	+++	+++	+++	+++	++	++	++	+	++
93015LE	0.10	Acrylic	Clear	LSE	PCK	Low surface energy bonding	+++	+++	+++	+++	++	++	++	+	++
93020LE	0.10	Acrylic	Clear	LSE	PCK	Low surface energy bonding	+++	+++	+++	+++	++	++	++	+	++

To find out more go to [3M.com/electronicbonding](https://www.3m.com/electronicbonding)

PHONE

TABLET

NOTEBOOK

TELEVISION

## Bezel Bonding

ADHESION LEVEL KEY: GOOD: + BETTER: ++ BEST: +++

Testing for specific applications is suggested.

TAPE COMPONENTS						"WOW" Features	ADHESION BY SUBSTRATES						OTHER PROPERTY			
Tape Product No.	Thickness (mm)	Adhesive Family	Color	Types of Adhesive	Liner		Steel, Aluminum, Glass, Ceramics, Anodized Aluminum, Nickel	High Surface Energy	Low Surface Energy	Silicone	Graphite Film	Foam, Microcellular, Urethane	Push Out	Drop Test	Cleavage	High Temp
82220B	0.20	Acrylic	Black	LSE	PCK	Good for LSE	+	+	+++	++	++	++	++	++	+	+
82320B	0.20	Acrylic	Black	Flexible	PCK	Drop performance	+	++	++	++	++	+++	++	+++	+	+
5906	0.15	Acrylic Foam	Black	Acrylic Foam	PET	Caliper range & adhesion	+++	+++	++	+++	++	+++	+++	+++	+++	+++
5907	0.20	Acrylic Foam	Black	Acrylic Foam	PET	Caliper range & adhesion	+++	+++	++	+++	++	+++	+++	+++	+++	+++
5908	0.25	Acrylic Foam	Black	Acrylic Foam	PET	Caliper range & adhesion	+++	+++	++	+++	++	+++	+++	+++	+++	+++
5909	0.30	Acrylic Foam	Black	Acrylic Foam	PET	Caliper range & adhesion	+++	+++	++	+++	++	+++	+++	+++	+++	+++
5915	0.40	Acrylic Foam	Black	Acrylic Foam	Film/Paper	Caliper range & adhesion	+++	+++	+	+	+++	++	+++	+++	+++	+++

PHONE

TABLET

NOTEBOOK

TELEVISION



## Bezel Bonding

ADHESION LEVEL KEY: GOOD: + BETTER: ++ BEST: +++

Testing for specific applications is suggested.

Adhesive Product No.	ADHESIVE KEY FEATURES						"WOW" Features	ADHESION BY SUBSTRATES					OTHER PROPERTY			
	Handling Time (minutes)	Work Life (minutes)	Chemistry Family	Halogen Content	Color	Mix Ratio		Steel, Aluminum, Glass, Ceramics, Anodized Aluminum, Nickel	High Surface Energy	Low Surface Energy	Silicone	Foam, Microcellular, Urethane	Push Out	Drop Test	Cleavage	High Temp Resistance
3692B	2 - 8	2 - 8	1-part Urethane Reactive Hot melt	LH	Black	no mixing	Ideal for jet dispense and gap filling, high strength, long open time, reworkable	+++	+++	+	+++	+++	+++	+++	++	
DP8805LH	6 - 7	3 - 4	2-part Acrylic	LH	Green	10:1	Low odor, Low halogen, thin bond line, great drop resistance, high strength, fast fixture time	+++	+++		++	+++	+++	+++	+++	
DP8405NS	14 - 16	4 - 6	2-part Acrylic	LH	Green	10:1	Thin bond line, superb drop resistance, high strength, fast fixture time	+++	+++		++	+++	+++	+++	+++	



PHONE

TABLET

NOTEBOOK

TELEVISION



## Camera Lens Attachment

ADHESION LEVEL KEY: GOOD: + BETTER: ++ BEST: +++

Testing for specific applications is suggested.

Tape Product No.	Thickness (mm)	TAPE COMPONENTS				"WOW" Features	ADHESION BY SUBSTRATES					OTHER PROPERTY			
		Adhesive Family	Color	Types of Adhesive	Liner		Steel, Aluminum, Glass, Ceramics, Anodized Aluminum, Nickel	High Surface Energy	Low Surface Energy	Silicone	Graphite Film	Foam, Microcellular, Urethane	Push Out	Drop Test	Cleavage
9495LE	0.17	300LSE	Clear	LSE	58#PCK	Good push-out	+++	+++	+++	+++	++	+++	++	+++	++
93010LE	0.10	Acrylic	Clear	LSE	PCK	Low surface energy bonding	+++	+++	+++	+++	++	++	++	+	++
93015LE	0.10	Acrylic	Clear	LSE	PCK	Low surface energy bonding	+++	+++	+++	+++	++	++	++	+	++
93020LE	0.10	Acrylic	Clear	LSE	PCK	Low surface energy bonding	+++	+++	+++	+++	++	++	++	++	++
9629PC	0.10	360	Clear	Standard	58#PCK	Quick bonding	++	+++	+++	+++	+++	++	+	++	+
9628FL	0.05	360	Clear	Standard	PET	Quick bonding	++	+++	+++	+++	+++	++	+	++	+

To find out more go to [3M.com/electronicbonding](https://www.3m.com/electronicbonding)[More Camera Lens Attachment](#)

PHONE

TABLET

NOTEBOOK

TELEVISION



## Camera Lens Attachment

ADHESION LEVEL KEY: GOOD: + BETTER: ++ BEST: +++

Testing for specific applications is suggested.

Adhesive Product No.	Handling Time (minutes)	Work Life (minutes)	ADHESIVE KEY FEATURES				"WOW" Features	ADHESION BY SUBSTRATES					OTHER PROPERTY				
			Chemistry Family	Hal-ogen Content	Color	Mix Ratio		Steel, Aluminum, Glass, Ceramics, Anodized Aluminum, Nickel	High Surface Energy	Low Surface Energy	Silicone	Foam, Microcellular, Urethane	Peel	Push Out	Drop Test	Cleavage	High Temp Resistance
PR100	1	0.3	Ethyl Cyanoacrylate	TBD	Clear		Bond to wide ranges of substrates and fast cure. Guinness World Record.	+++ (not for glass, use S1 grade for ceramics)	+++	+++***	+++***	++	+			+	+
AC77		15	Primer	LH	Clear		Primer for low surface energy plastic			+++ (w/PR100)							
AC78		15	Primer	TBD	Clear		Primer for low surface energy plastic			+++ (w/PR100)							
DP605NS	15	8	Urethane	LH	Off White	1:01	Flexible and non-sag	+	++	+	+	++	+	+		++	+
2665	1.5 - 4	1 - 4	1-part Urethane Reactive Hot melt	LH	White	no mixing	Great drop resistance, soft, high tack, easily reworkable	+++	+++	+		+++		+++	+++	+++	+++
6011****	15-20 min at 60°C <3 min at 90°C	Pot life 10 days @ 23°C	1-part Epoxy	LH	White/Black	no mixing	Fast cure at low temperature, no mixing great drop resistance, high strength, great environmental resistance	+++	+++			++		+++	+++	+++	+++

\*\*\*With appropriate primer.

\*\*\*\*Available only in China.

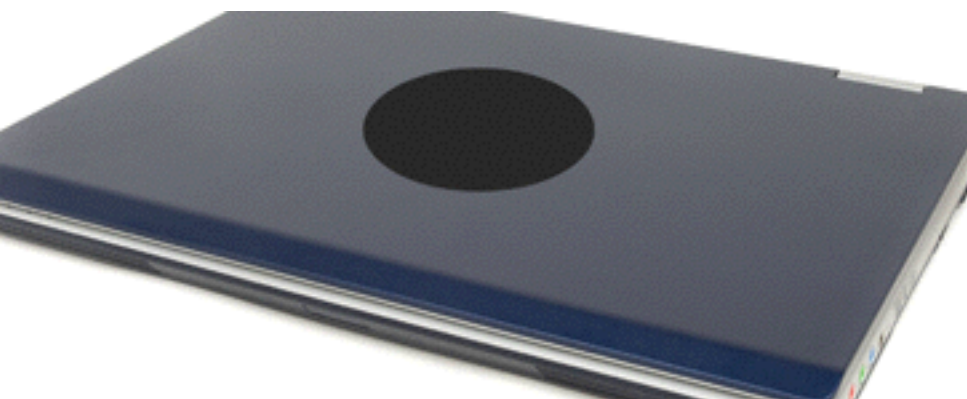
To find out more go to [3M.com/electronicbonding](https://www.3m.com/electronicbonding)

PHONE

TABLET

NOTEBOOK

TELEVISION



## Logo/Nameplate Attachment

ADHESION LEVEL KEY: GOOD: + BETTER: ++ BEST: +++

Testing for specific applications is suggested.

TAPE COMPONENTS						"WOW" Features	ADHESION BY SUBSTRATES					OTHER PROPERTY			
Tape Product No.	Thickness (mm)	Adhesive Family	Color	Types of Adhesive	Liner		Steel, Aluminum, Glass, Ceramics, Anodized Aluminum, Nickel	High Surface Energy	Low Surface Energy	Silicone	Graphite Film	Foam, Microcellular, Urethane	Push Out	Drop Test	Cleavage
467MP	0.058	200MP	Clear	Firm	58#PCK	High temperature shear and thin	+++	+++		+++	++	+++	+	+++	+++
9471LE	0.05	300LSE	Clear	LSE	58#PCK	Low surface energy bonding	+++	+++	+++	+++	++	+++	++	+++	++
468MP	0.13	200MP	Clear	Firm	58#PCK	Good to bond around curve, high temperature shear	+++	+++		+++	++	+++	+	+++	+++
9448A	0.15	Acrylic	White	Standard	0.12mm PCK	All purpose tissue tape	+++	+++	+++	+++	+++	++	++	++	++
9629PC	0.10	360	Clear	Standard	58#PCK	Quick bonding	++	+++	+++	+++	+++	++	+	++	+

ADHESIVE KEY FEATURES							"WOW" Features	ADHESION BY SUBSTRATES					OTHER PROPERTY			
Adhesive Product No.	Handling Time (minutes)	Work Life (minutes)	Chemistry Family	Halogen Content	Color	Mix Ratio		Steel, Aluminum, Glass, Ceramics, Anodized Aluminum, Nickel	High Surface Energy	Low Surface Energy	Silicone	Foam, Microcellular, Urethane	Push Out	Drop Test	Cleavage	High Temp Resistance
DP8805LH	6 - 7	3 - 4	2-part Acrylic	LH	Green	10:1	Low odor, low halogen, thin bond line, great drop resistance, high strength, fast fixture time	+++	+++		++	+++	+++	+++	+++	
DP604	20	4	2-part Urethane	LH	Black	1:1	Flexible, fast setting, bond and seal	+++	+++		+++	+++	+++	+++	+++	
PR100	6 - 18 sec	3	Cyanoacrylate	LH	Clear	no mixing	Instant fixturing, 1-part no mixing, clear	+++	+++	+++***		+++	+	+	+++	

\*\*\*With appropriate primer.

To find out more go to [3M.com/electronicbonding](https://www.3m.com/electronicbonding)



## Laptop Casing Assembly

ADHESION LEVEL KEY: GOOD: + BETTER: ++ BEST: +++

Testing for specific applications is suggested.

ADHESIVE KEY FEATURES							"WOW" Features	ADHESION BY SUBSTRATES					OTHER PROPERTY			
Adhesive Product No.	Handling Time (minutes)	Work Life (minutes)	Chemistry Family	Halogen Content	Color	Mix Ratio		Steel, Aluminum, Glass, Ceramics, Anodized Aluminum, Nickel	High Surface Energy	Low Surface Energy	Silicone	Foam, Microcellular, Urethane	Peel	Push Out	Drop Test	Cleavage
DP8805	7*	4	Low Odor Acrylic	TBD	Green	0.417361111	Exceptionally fast cured and low odor and toughened	+++	+++	+	+	++	++		+++	+++
DP8405	12	5	MMA	TBD	Green	0.417361111	High impact resistant and fast cure	+++	+++**	+	+	++	+++		++	+++

\*Immediate handling at 60°C for 60 sec.

\*\*Best for polycarbonate.

PHONE

TABLET

NOTEBOOK

TELEVISION



## Laptop Cover Assembly

ADHESION LEVEL KEY: GOOD: + BETTER: ++ BEST: +++

Testing for specific applications is suggested.

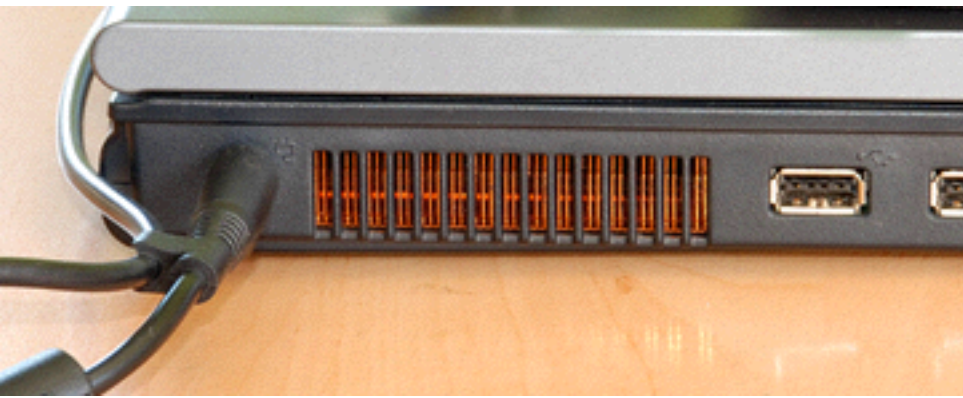
Adhesive Product No.	Handling Time (minutes)	Work Life (minutes)	ADHESIVE KEY FEATURES				"WOW" Features	ADHESION BY SUBSTRATES					OTHER PROPERTY					
			Chemistry Family	Halogen Content	Color	Mix Ratio		Steel, Aluminum, Glass, Ceramics, Anodized Aluminum, Nickel	High Surface Energy	Low Surface Energy	Silicone	Foam, Microcellular, Urethane	Peel	Push Out	Drop Test	Cleavage	High Temp Resistance	
DP100+	20	5	Epoxy	High	Clear	1:01	Fast cure, flexible and clear	+++	++	+	+	++	++		++		++	+
DP420 LH	120	20	Epoxy	Low	Off White	2:01	Low halogen, toughened and best fatigue performance	+++	++	+	+		+++		+++		+++	++

PHONE

TABLET

NOTEBOOK

TELEVISION



## Docking Connector

ADHESION LEVEL KEY: GOOD: + BETTER: ++ BEST: +++

Testing for specific applications is suggested.

Adhesive Product No.	Handling Time (minutes)	Work Life (minutes)	ADHESIVE KEY FEATURES				"WOW" Features	ADHESION BY SUBSTRATES					OTHER PROPERTY				
			Chemistry Family	Halogen Content	Color	Mix Ratio		Steel, Aluminum, Glass, Ceramics, Anodized Aluminum, Nickel	High Surface Energy	Low Surface Energy	Silicone	Foam, Microcellular, Urethane	Peel	Push Out	Drop Test	Cleavage	High Temp Resistance
DP810	10	10	Low Odor Acrylic	Low	Tan	1:1	Low odor and toughened	+++	+++	+++	+	++	++		+++	++	
DP8805	7*	4	Low Odor Acrylic	TBD	Green	0.417361111	Exceptionally fast cured and low odor and toughened	+++	+++	+++	+	++	++		+++	+++	
DP8405	12	5	MMA	TBD	Green	0.417361111	High impact resistant and fast cure	+++	+++**	+	+	++	+++		++	+++	
DP100+	20	5	Epoxy	High	Clear	1:01	Fast cure, flexible and clear	+++	+	+	+	++	++		++	++	
DP420 LH	120	20	Epoxy	Low	Off White	2:1	Low halogen, toughened and best fatigue performance	+++	++	+	+		+++		+++	++	

\*Immediate handling at 60°C for 60 sec.

\*\*Best for polycarbonate.

PHONE

TABLET

NOTEBOOK

TELEVISION



## Name Card Holder Attachment

ADHESION LEVEL KEY: GOOD: + BETTER: ++ BEST: +++

Testing for specific applications is suggested.

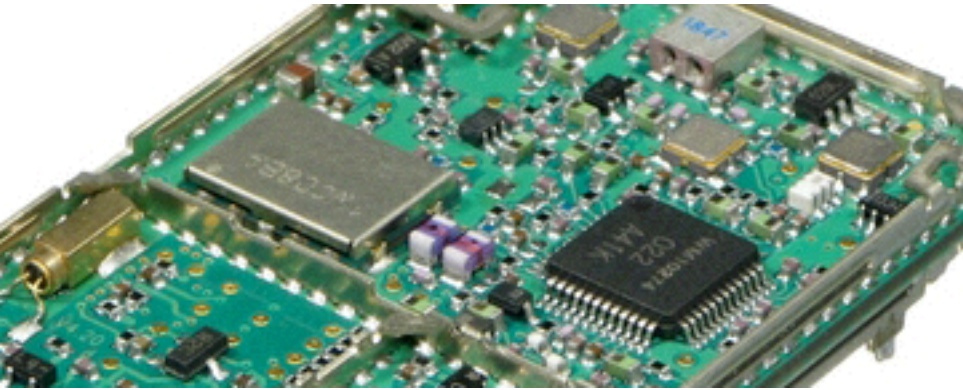
TAPE COMPONENTS						"WOW" Features	ADHESION BY SUBSTRATES					OTHER PROPERTY			
Tape Product No.	Thickness (mm)	Adhesive Family	Color	Types of Adhesive	Liner		Steel, Aluminum, Glass, Ceramics, Anodized Aluminum, Nickel	High Surface Energy	Low Surface Energy	Silicone	Graphite Film	Foam, Microcellular, Urethane	Push Out	Drop Test	Cleavage
9629PC	0.10	360	Clear	Standard	58#PCK	Quick bonding	++	+++	+++	+++	+++	++	+	++	+
93010LE	0.10	Acrylic	Clear	LSE	PCK	Good for LSE	+++	+++	+++	+++	++	++	++	+	++

PHONE

TABLET

NOTEBOOK

TELEVISION



## Polyester Film Insulated Attachment

ADHESION LEVEL KEY: GOOD: + BETTER: ++ BEST: +++

Testing for specific applications is suggested.

TAPE COMPONENTS						"WOW" Features	ADHESION BY SUBSTRATES					OTHER PROPERTY			
Tape Product No.	Thickness (mm)	Adhesive Family	Color	Types of Adhesive	Liner		Steel, Aluminum, Glass, Ceramics, Anodized Aluminum, Nickel	High Surface Energy	Low Surface Energy	Silicone	Graphite Film	Foam, Microcellular, Urethane	Push Out	Drop Test	Cleavage
55256	0.05	Acrylic	Clear	Standard	55#PCK	Bonds well to foam & plastics	+++	+++	++	++	++	+	+	++	++
82600	0.005	Acrylic	Clear	Standard	PET	Very thin	++	++	++	+++	++	+	+	++	++
82601	0.01	Acrylic	Clear	Standard	PET	Very thin	++	++	++	+++	++	+	+	++	++
82603	0.03	Acrylic	Clear	Standard	PET	Very thin	++	++	++	+++	++	++	++	++	++
UCT-10	0.01	Acrylic	Clear	Firm	PET	Good anti-lifting	+++	+++	+++	+++	++	++	++	++	++
UCT-30	0.03	Acrylic	Clear	Firm	PET	Good anti-lifting	+++	+++	+++	+++	++	++	++	++	++
UCT-50	0.05	Acrylic	Clear	Firm	PET	Good anti-lifting	+++	+++	+++	+++	++	++	++	++	++
93004LE	0.04	300LSE	Clear	LSE	PCK	Good chemical resistance	+++	+++	+++	+++	++	++	++	+	++

To find out more go to [3M.com/electronicbonding](https://www.3m.com/electronicbonding)

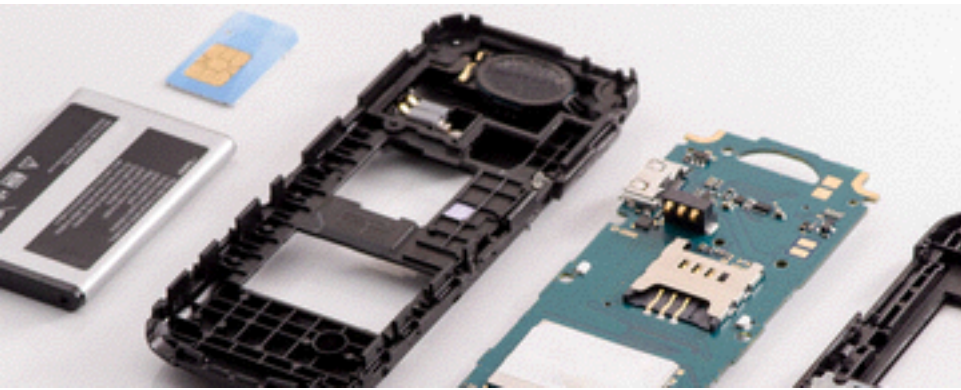


PHONE

TABLET

NOTEBOOK

TELEVISION



ADHESION LEVEL KEY: GOOD: + BETTER: ++ BEST: +++

Testing for specific applications is suggested.

## Component Assembly

Adhesive Product No.	ADHESIVE KEY FEATURES						"WOW" Features	ADHESION BY SUBSTRATES					OTHER PROPERTY				
	Handling Time (minutes)	Work Life (minutes)	Chemistry Family	Halogen Content	Color	Mix Ratio		Steel, Aluminum, Glass, Ceramics, Anodized Aluminum, Nickel	High Surface Energy	Low Surface Energy	Silicone	Foam, Microcellular, Urethane	Peel	Push Out	Drop Test	Cleavage	High Temp Resistance
DP605NS	15	5	Urethane	LH	Off White	1:01	Flexible and non-sag	+	++	+	+	++	++		++	+	
SW 2020HF	N/A	N/A	1-part Epoxy	LH	Grey	N/A	Excellent peel strength, high heat performance	+++	+++							+++	
FIPG 7103HC	N/A	N/A	2-part Epoxy	LH	Amber	1.63:1	Low outgassing										

PHONE

TABLET

NOTEBOOK

TELEVISION



## Track Pad Attachment

ADHESION LEVEL KEY: GOOD: + BETTER: ++ BEST: +++

Testing for specific applications is suggested.

TAPE COMPONENTS						"WOW" Features	ADHESION BY SUBSTRATES					OTHER PROPERTY			
Tape Product No.	Thickness (mm)	Adhesive Family	Color	Types of Adhesive	Liner		Steel, Aluminum, Glass, Ceramics, Anodized Aluminum, Nickel	High Surface Energy	Low Surface Energy	Silicone	Graphite Film	Foam, Microcellular, Urethane	Push Out	Drop Test	Cleavage
467MP	0.058	200MP	Clear	Firm	58#PCK	High temperature shear and thin	+++	+++		+++	++	+++	+	+++	+++
468MP	0.13	200MP	Clear	Firm	58#PCK	Good to bond around curve, high temperature shear	+++	+++		+++	++	+++	+	+++	+++
9492MP	0.06	Acrylic	Clear	Firm	PCK	Reliability	+++	+++		+	+	+	+	+	++

ADHESIVE KEY FEATURES							"WOW" Features	ADHESION BY SUBSTRATES					OTHER PROPERTY			
Adhesive Product No.	Handling Time (minutes)	Work Life (minutes)	Chemistry Family	Halogen Content	Color	Mix Ratio		Steel, Aluminum, Glass, Ceramics, Anodized Aluminum, Nickel	High Surface Energy	Low Surface Energy	Silicone	Foam, Microcellular, Urethane	Push Out	Drop Test	Cleavage	High Temp Resistance
TBF 615	0.06 / 0.10 mm 2.5 / 4.0 mils		Thermoplastic Film		Translucent/ Tan	0.08 mm/ 3.0 mils	Quick fixturing, excellent adhesion to many substrates	+++	+++	+	++	+++	+++	+++	+++	

PHONE

TABLET

NOTEBOOK

TELEVISION



## Keyboard Assembly

ADHESION LEVEL KEY: GOOD: + BETTER: ++ BEST: +++

Testing for specific applications is suggested.

Adhesive Product No.	Handling Time (minutes)	Work Life (minutes)	ADHESIVE KEY FEATURES				"WOW" Features	ADHESION BY SUBSTRATES					OTHER PROPERTY				
			Chemistry Family	Halogen Content	Color	Mix Ratio		Steel, Aluminum, Glass, Ceramics, Anodized Aluminum, Nickel	High Surface Energy	Low Surface Energy	Silicone	Foam, Microcellular, Urethane	Peel	Push Out	Drop Test	Cleavage	High Temp Resistance
DP8805	7*	4	Low Odor Acrylic	TBD	Green	0.417361111	Exceptionally fast cured and low odor and toughened	+++	+++	+	+	++	++		+++	+++	
DP8405	12	5	MMA	TBD	Green	0.417361111	High impact resistant and fast cure	+++	+++**	+	+	++	+++		++	+++	

\*Immediate handling at 60°C for 60 sec.

\*\*Best for polycarbonate.

PHONE

TABLET

NOTEBOOK

TELEVISION



ADHESION LEVEL KEY: GOOD: + BETTER: ++ BEST: +++

Testing for specific applications is suggested.

## Component Attachment

Adhesive Product No.	Handling Time (minutes)	Work Life (minutes)	ADHESIVE KEY FEATURES				"WOW" Features	ADHESION BY SUBSTRATES					OTHER PROPERTY				
			Chemistry Family	Halogen Content	Color	Mix Ratio		Steel, Aluminum, Glass, Ceramics, Anodized Aluminum, Nickel	High Surface Energy	Low Surface Energy	Silicone	Foam, Microcellular, Urethane	Peel	Push Out	Drop Test	Cleavage	High Temp Resistance
DP8805	7*	4	Low Odor Acrylic	TBD	Green	0.417361111	Exceptionally fast cured and low odor and toughened	+++	+++	+	+	++	++			+++	+++
DP8405	12	5	MMA	TBD	Green	0.417361111	High impact resistant and fast cure	+++	+++**	+	+	++	+++			++	+++

\*Immediate handling at 60°C for 60 sec.

\*\*Best for polycarbonate.

PHONE

TABLET

NOTEBOOK

TELEVISION



## Removable Part Attachment

ADHESION LEVEL KEY: GOOD: + BETTER: ++ BEST: +++

Testing for specific applications is suggested.

TAPE COMPONENTS						"WOW" Features	ADHESION BY SUBSTRATES					OTHER PROPERTY				
Tape Product No.	Thickness (mm)	Adhesive Family	Color	Types of Adhesive	Liner		Steel, Aluminum, Glass, Ceramics, Anodized Aluminum, Nickel	High Surface Energy	Low Surface Energy	Silicone	Graphite Film	Foam, Microcellular, Urethane	Push Out	Drop Test	Cleavage	High Temp
9415PC	0.05	400/1000	Clear	Differential	PCK	Removeability, low tack/high tack	++/+	++/+	++/+	++/+	++/+					++
9425HT	0.13	420/1050	Clear	Differential	PCK	Clean removeability, medium tack/high tack	++/++	++/++	++/++	++/++	++/++					+++

# LET'S DESIGN THE FUTURE.

**Warranty, Limited Remedy and Disclaimer:** Many factors beyond 3M's control and uniquely within user's knowledge and control can affect the use and performance of a 3M product in a particular application. User is solely responsible for evaluating the 3M product and determining whether it is fit for a particular purpose and suitable for user's method of application. Unless an additional warranty is specifically stated on the applicable 3M product packaging or product literature, 3M warrants that each 3M product meets the applicable 3M product specification at the time 3M ships the product. 3M MAKES NO OTHER WARRANTIES OR CONDITIONS, EXPRESS OR IMPLIED, INCLUDING, BUT NOT LIMITED TO, ANY IMPLIED WARRANTY OR CONDITION OF MERCHANTABILITY OR FITNESS FOR A PARTICULAR PURPOSE OR ANY IMPLIED WARRANTY OR CONDITION ARISING OUT OF A COURSE OF DEALING, CUSTOM OR USAGE OF TRADE. If the 3M product does not conform to this warranty, then the sole and exclusive remedy is, at 3M's option, replacement of the 3M product or refund of the purchase price. **Limitation of Liability:** Except where prohibited by law, 3M will not be liable for any loss or damage arising from the 3M product, whether direct or indirect, special, incidental or consequential, regardless of the legal theory asserted, including warranty, contract, negligence or strict liability.

**3M**

**3M Industrial Adhesives and Tapes Division**

Building 225-3S-06  
1-855-666-2700  
St. Paul, MN 55144-1000

3M, Fastbond and Scotch-Weld are trademarks of 3M.  
Scotch is a registered trademark of 3M.  
Please recycle.  
© 3M 2015. All rights reserved.

**7/2015**