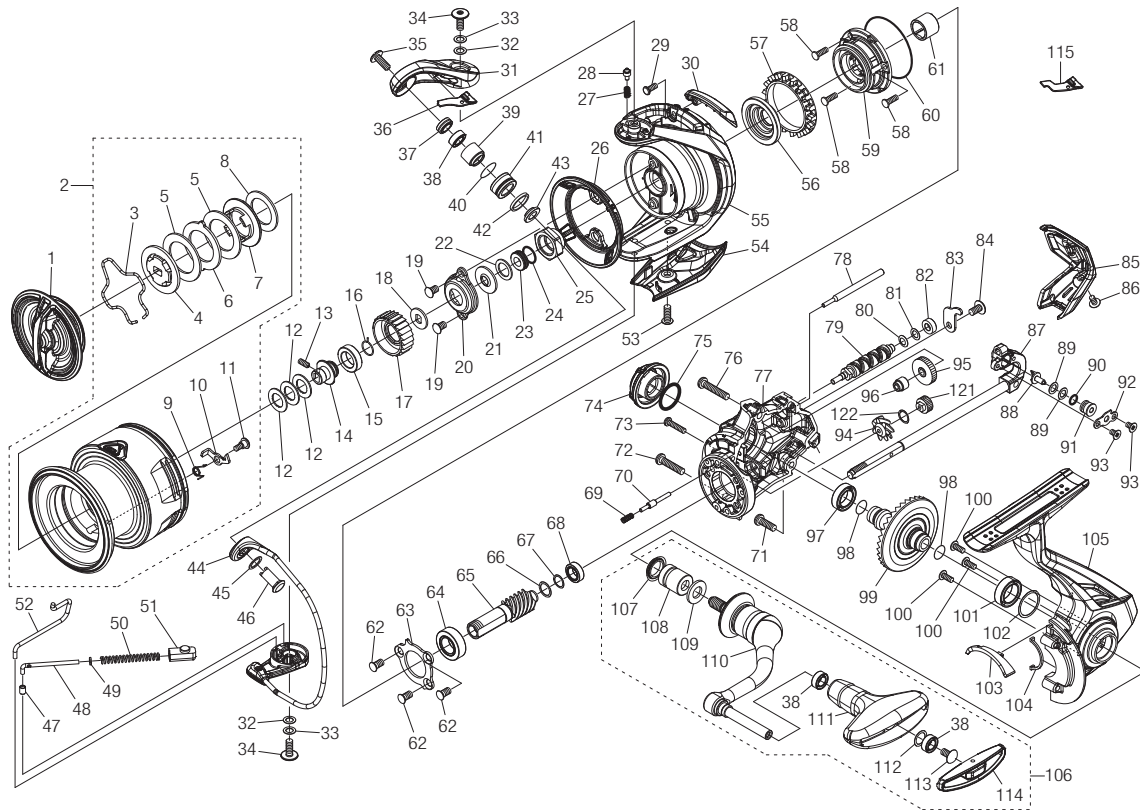


SHIMANO

VANFORD

VFC3000XGA



(51SF82DE39X)

Please note that the number of adjusting washers may not be the same as shown in the exploded views.
(Adjustment will vary with each individual product.)

#	Part No.	RD No.	Description	#	Part No.	RD No.	Description	#	Part No.	RD No.	Description
1	14626		Drag Knob Assembly	42	10RFZ	19839	Spacer	83	1427X		Worm Shaft Retainer
2	14631		Spool Assembly	43	10TJM	18208	Bearing Spacer	84	10QG5	0647	Screw
3	1427A		Retainer	44	146ST		Bail Assembly	85	141HU		Rear Protector
4	10K3C	20994	Key Washer B	45	1018Z	17680	Washer	86	10RX2	20987	Screw
5	10R5H	22029	Drag Washer A	46	10TPC	17681	Line Roller Support	87	141HD		Main Shaft Assembly
6	1427B		Eared Washer	47	1009B	19876	Bail Spring Guide A Bushing	88	1018D	19807	Oscillating Pawl
7	10B9D	9910	Key Washer	48	10SAN	19857	Bail Spring Guide A	89	1070D	16796	Washer
8	10R4W	22030	Drag Washer B	49	101D9	18724	Spring Guide A Support Collar	90	100WX	19780	O Ring
9	10BQF	17183	Drag Click Spring	50	10DMC	17817	Bail Spring	91	1009L	19884	Oscillating Slider Bushing
10	102H5	17184	Drag Click	51	107AB	17684	Bail Spring Guide B	92	10182	19818	Oscillating Pawl Cover
11	10A6F	14780	Screw	52	14625		Bail Trip Lever	93	1055H	19990	Screw
12	10BU9	17666	Spool Washer	53	101CC	20988	Screw	94	148P1	22817	Idle Gear (Large)
13	10PN3	17667	Set Screw	54	145EW		Bail Hold Support Guard	95	10DK0	18744	Idle Gear
14	10THY	18206	Spool Bearing Bushing	55	146SV		Rotor Assembly	96	1427Y		Bushing
15	10J3F	16122	Bushing	56	101D5	18732	Rotor Ring	97	107FA	12969	Ball Bearing
16	107V2	9833	Ratchet Spring	57	10QXQ	19883	Friction Ring	98	1009S	22066	O Ring
17	10SYS	18207	Drag Click Ratchet	58	100WT	19777	Screw	99	1428T		Drive Gear
18	103PE	14867	Spool Support A	59	10S2L	18735	Roller Clutch Assembly	100	100UL	20991	Screw
19	103GW	19989	Screw	60	1009Z	19866	O Ring	101	10EX6	17629	Ball Bearing
20	1076N	19926	Nut Lock Plate	61	1009Y	19899	Roller Clutch Inner	102	101AY	19746	Washer
21	1017W	19793	Bearing Water Proof	62	100WY	19775	Screw	103	14282		Bail Trip Strike
22	100RU	21006	Washer	63	10DWD	19822	Bearing Retainer	104	1009W	19886	Flange Water Proof
23	10RDL	19805	Main Shaft Collar	64	10DZB	19998	Ball Bearing	105	146TF		Side Cover Assembly
24	10DXE	19781	O Ring	65	1428R		Pinion Gear	106	1462V		Handle Assembly
25	1427D		Rotor Nut	66	10HE5	19997	Washer	107	10PXV	17695	Handle Shaft Seal
26	1462D		Rotor Brim	67	10SYU	18741	Washer	108	100A0	19895	Handle Shaft Cover B
27	10HE7	20069	Click Spring	68	104JZ	13829	Ball Bearing	109	100RR	21009	Handle Washer
28	1062C	17415	Click Pin	69	1427P		Idle Gear Spring	110	146TA		Handle Shank Assembly
29	10RNG	20990	Screw	70	1427Q		Idle Gear Shaft	111	10R38	17493	Handle Knob
30	1462F		Counter Weight Cover	71	10LZG	17821	Screw	112	104FH	19745	Washer
31	141HV		Bail Arm	72	10M31	15874	Screw	113	10LFA	17700	Screw
32	10KFA	11166	Washer	73	10TP1	17694	Screw	114	141NY		Handle Knob Seal
33	10K96	18551	Washer	74	1427T		Handle Screw Cap	121	147W5	22816	Idle Gear (Small)
34	10RFW	19421	Screw	75	108WH	0582	O Ring	122	10TBA	19994	Washer
35	10TLJ	18210	Screw	76	146AR		Screw				
36	1427J		Bail Arm Fin	77	141HS		Body				
37	10E44	20150	Collar	78	1427V		Oscillating Guide				
38	104VX	13269	Ball Bearing	79	1427W		Worm Shaft				
39	1009K	19837	Bushing	80	10ECK	18199	Washer				
40	1009E	19831	O Ring	81	10K98	18201	Washer				
41	1009A	19959	Line Roller	82	1009C	19976	Bushing	115	14287		Bail Arm Fin (accessory)