

DROUGHT

— DRY VAPORIZER —

DROUGHT

— DRY VAPORIZER —

DROUGHT

— DRY VAPORIZER —







INCLUDES

USER TIPS

IMPORTANT USAGE TIPS

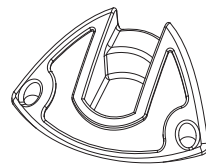
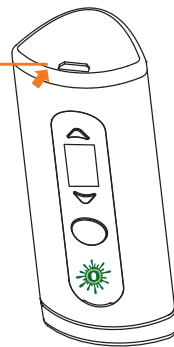
In order to ensure safe use, please read all instructions and safety warning before operating. Failure to follow instructions may result in injury and may void your warranty.

KEY FEATURES

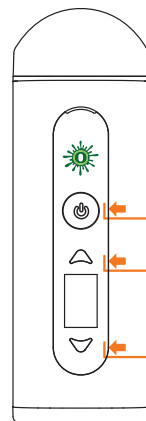
-  AIR HEATING
-  < 30" HEATING UP
-  ADJUSTABLE 320°F-410°F
-  MICRO USB CHARGING
-  BATTERY LEVEL
-  COMPACT 4" TALL



CHARGING PORT



SILICONE MOUTHPIECE



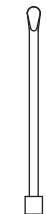
POWER BUTTON 

TEMP CONTROL + 

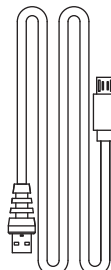
TEMP CONTROL - 



CLEANING BRUSH



PACKING TOOL



USB CABLE

- For best results, fill chamber halfway or more, but do not pack tightly. This allows for even heat distribution and room to stir your herbal blends if necessary throughout usage.
- To maximize efficiency, once used allow unit to cool, and then stir herbs before the next cycle.
- Be sure to turn off the unit when you are done by pressing the on/off button 5 times within 2 seconds.

- Press and hold the power button 5 times within 2 seconds to power on/off.
- Press and hold power button and “-” buttons simultaneously for 2 seconds to change from Fahrenheit to Celsius or from Celsius to Fahrenheit.
- Adjust desired temperature by manually using “+” or “-” buttons.
- Your vaporizer is equipped with a 4 minute auto shut off time to prevent wasting power and over heating.

LED DIGITAL SCREEN INSTRUCTIONS



TURN ON



TURN OFF



CHARGING



AUTO SHUT OFF
COUNTDOWN



TEMPERATURE
SETTING



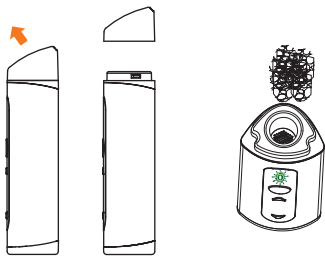
ERROR
OCCURED



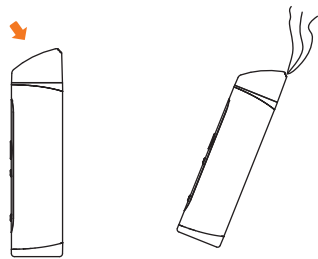
@OOZELIFE #OOZELIFE

OOZELIFE.COM

HOW TO LOAD DRY HERBS

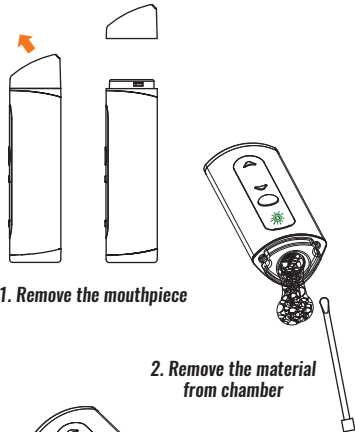


1. Remove the mouthpiece
2. Load herbs loosely and gently pack down

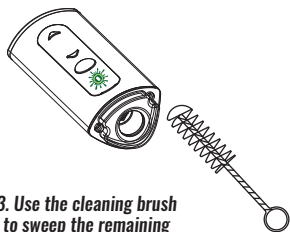


3. Put mouthpiece back
4. Enjoy vaping

HOW TO CLEAN

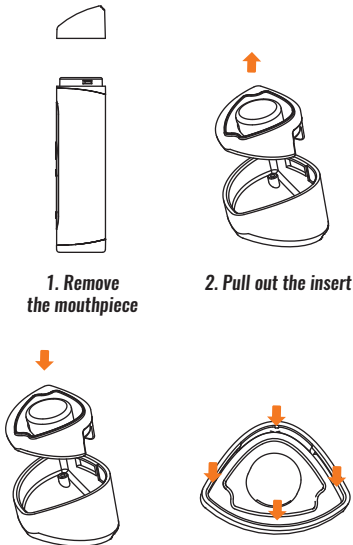


1. Remove the mouthpiece
2. Remove the material from chamber





3. Use the cleaning brush to sweep the remaining residue from chamber

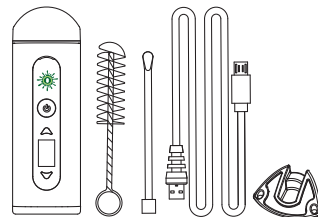
HOW TO REPLACE THE SILICONE INSERT



1. Remove the mouthpiece
2. Pull out the insert
3. Replace with a new insert
4. Fully set the insert into mouthpiece

CHARGING INSTRUCTIONS

- Battery capacity: 1650mAh
- Initially charge the **DROUGHT** for 2 hours. The battery will stop charging when the  icon is full, and light turn green on power button.
- When battery level is low, charge battery with included micro USB cable using either your computer USB port or a compatible wall charger. Low battery level will be indicated with  icon.
- Do not use **DROUGHT** while charging.



CLEANING INSTRUCTIONS

- Clean parts after each use to keep your **DROUGHT** in working condition. Keep away from water and extremely hot or cold temperatures.
- Make sure your **DROUGHT** is cool enough to remove the mouthpiece. Use provided cleaning brush to remove any flower residue. If the chamber gets sticky, use a q-tip dipped slightly in rubbing alcohol to remove resin build-up. Use an alcohol wipe to clean the digital screen and mouthpiece to sanitize between uses.

DROUGHT
— DRY VAPORIZER —

ooze



@OOZELIFE #OOZELIFE

OOZELIFE.COM

