

5 IN 1 MEN'S TRIMMER SET

TB-0868B

INSTRUCTION MANUAL

**Safety Instructions:**

To ensure proper operation of this appliance, please read this instruction manual carefully before using the appliance and save it for further reference.

**⚠ WARNING**

- Do not use this appliance under the following conditions:
  - Persons with physical, sensory, and mental disabilities
  - Persons with allergies
  - Areas with existing open wounds, inflammation, severe dryness, lumps and other severe skin diseases or conditions
- Verify if the appliance is deformed or damaged before you start using it. Do not use the appliance if it has any damage to prevent injuries.
- This appliance has a variety of using purposes, before using it, select the head you want to use to avoid accidents.
- If you feel any discomfort on your skin during or after using the appliance, stop using it and consult a doctor.
- Do not attempt to modify, disassemble (except the removable parts), or repair the appliance by yourself to avoid accidents.

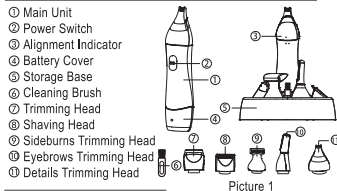
**⚠ CAUTION**

- Do not share the same appliance with others.
- Regularly clean the appliance to extend its life time.
- Keep the appliance out of reach of children.
- This appliance is battery-operated. If you do not use the appliance for a long time, remove the batteries.

**Specifications:**

- Name: 5 in 1 Men's Trimmer Set
- Item NO.: TB-0868B
- Rated Voltage/Power: 3.0V/1.2W
- Type of Battery: AAA 1.5V x 2 (not included)
- Sizes:
  - Appliance Body: 151mm x 37mm x 31mm
  - Storage Base: 106mm x 143mm x 38mm
- Material: ABS, Stainless Steel
- Executive Standard: Q/XMMJ1008-2015

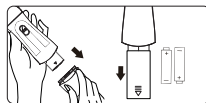
**Product Description (Picture 1):**



**Operating Instructions:**

**Install the Batteries**

With the appliance turned off, remove the Protective Cap. With one hand hold the appliance body and with the other hand remove the Battery Cover as showed below. Insert 2 AAA batteries according to the battery compartment instructions (picture 2) and put the Battery Cover back on (batteries are not included).



Picture 2

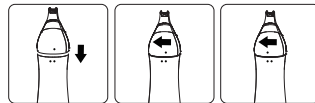
**Head Replacement**

- Make sure the appliance is turned off before you start removing the head.
- To remove the head, rotate it counterclockwise until the Alignment Indicator on the head is aligned with the right alignment indicator on the appliance body, and pull the head upwards to remove it (picture 3).



Picture 3

- To install the head, align the Alignment Indicator on the head with the right alignment indicator on the appliance body and rotate it clockwise until it locks the position (picture 4).



Picture 4

**Using the Appliance:**

- Before using the appliance, install the head you want to use.

**Trimming Head**

The Trimming Head is suitable to trim large areas with hair (ex: head hair, thick body hair). Slide the Power Switch upwards to turn the appliance on and place the Trimming Head lightly on the area you want to trim and move it against hair growth to trim (picture 5).



Picture 5

**Shaving Head**

The Shaving Head is suitable to shave facial beard and mustache. Slide the Power Switch upwards to turn the appliance on, place the Shaving Head close to the skin at a 90° angle and move the Shaving Head slowly and smoothly (picture 6).



Picture 6

**Sideburns Trimming Head**

The Sideburns Trimming Head is suitable to trim sideburns and hair around the ears. Slide the Power Switch upwards to turn the appliance on, with the trimming head parallel to the skin gently touch the hairs. You can also use the flat part of the trimming head as a support for trimming (picture 7).



Picture 7

**Eyebrows Trimming Head**

This trimming head is suitable to trim eyebrows and hairline. Slide the Power Switch upwards to turn the appliance on, use the Eyebrows Trimming Head from the outside to inside against hair growth to trim (picture 8).



Picture 8

**Details Trimming Head**

This head is suitable for finely trim the head (can be used for trimming shapes) and nose hairs. When trimming head hair, the Details Trimming Head should lightly touch head hairs, move the appliance slowly and smoothly to trim. When trimming nose hairs, slowly put the trimming head on the nostril (no more than 0.5mm deep) and move the trimming head slowly (picture 9).



Picture 9

After using the appliance, slide the Power Switch downwards to turn the appliance off.

**Cleaning & Maintenance:**

- Make sure the appliance is turned off before you start cleaning it.
- Wash the surface of the appliance with water (do not immerse the appliance in water) and dry it with a dry cloth. The removable part of the head should be cleaned with a brush and then rinsed with water.
- Never use lubricant, detergent, polishing agents or air freshener on this appliance.
- Never use towels, paper towels, and wire ball sponge to clean the trimmer/shaver blade.

**Service:**

**1. Eco-Friendly Tips**

Batteries contain substances harmful to our environment. Remove the batteries before you dispose the appliance and hand them over to an official recycling point. Do not dispose the appliance and the batteries in the normal household waste for environmental protection.

**2. Trouble Shooting**

Problem	Possible Cause	Solution
The appliance does not work	Batteries were inserted incorrectly	Insert the batteries correctly as guided
	Batteries are running low or out of power	Replace the batteries as guided
The head falls off	The head was not installed correctly	Turn off the appliance and install the head correctly as guided
Other problems		Contact your local retailer

Note: If the appliance still does not work properly after using above solutions, please stop using the appliance and contact your local retailer.

**3. Guarantee & Service**

If you need service, information, or if you have any doubt, please visit TOUCHBeauty website at [www.touchbeauty.com](http://www.touchbeauty.com) or contact your local retailer.

MANUFACTURER: TOUCHBEAUTY BEAUTY & HEALTH (SHENZHEN) CO., LTD

ADDRESS: 7/F, Marina Bay Centre A, South of Xinhua Road, Bao'an Centre Area, Xin'an Street Bao'an District, Shenzhen, China.